

The World Database on Protected Areas

Edward Lewis and Marine Deguignet



powered by the World Database on Protected Areas

What is UNEP-WCMC?

UNEP-WCMC is UNEP's specialist Biodiversity Assessment Centre

The Centre has been in place for 35 years and we have been a part of UNEP since 2000

We equip decision-makers to make enlightened choices for people and the planet by unlocking the power of the data

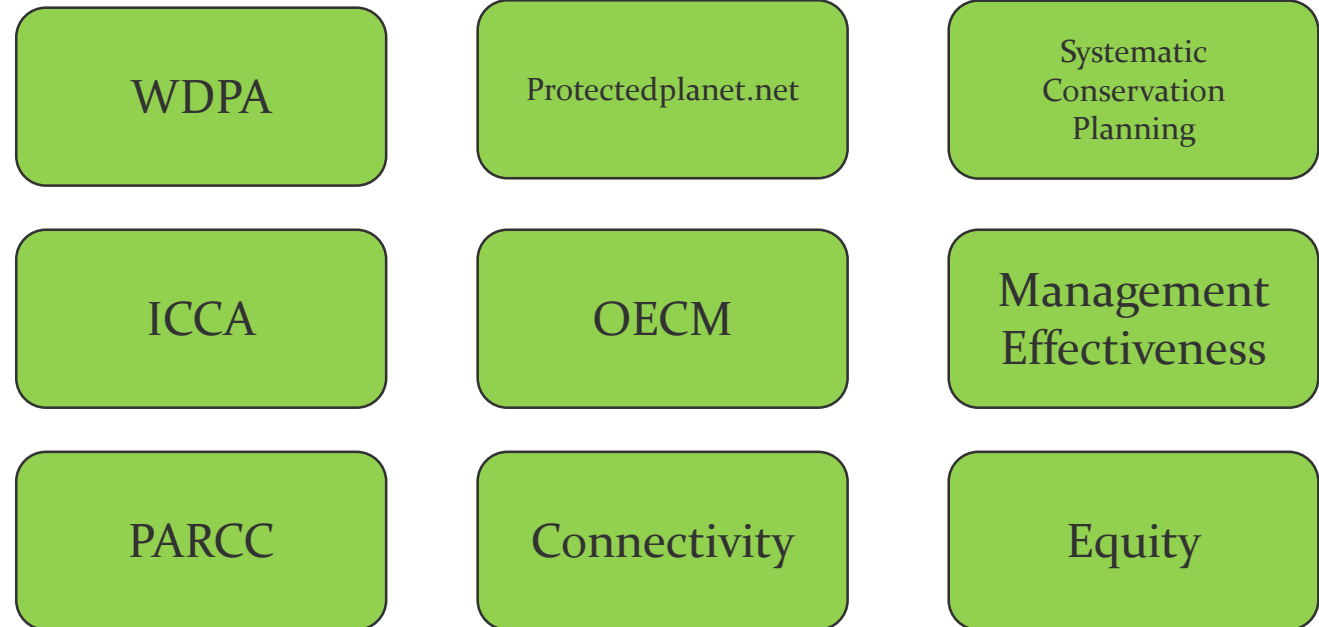
We collate, verify, analyse and share data to create new knowledge that we use to advocate for change and strengthen the capacity of our partners to do the same.



Protected Areas Programme

By 2020, at least 17 per cent of terrestrial and inland water areas, and 10 per cent of coastal and marine areas, especially areas of particular importance for biodiversity and ecosystem services, are conserved through effectively and equitably managed, ecologically representative and well connected systems of protected areas and other effective area-based conservation measures, and integrated into the wider landscapes and seascapes.

The Protected Areas Programme works on all aspects of Target 11. The main areas of work are:



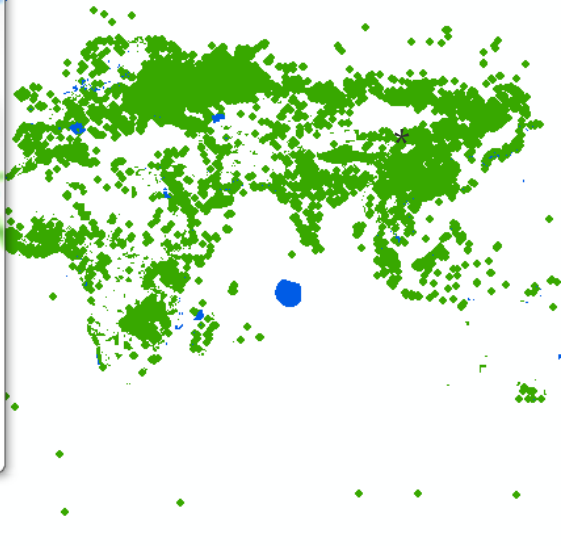
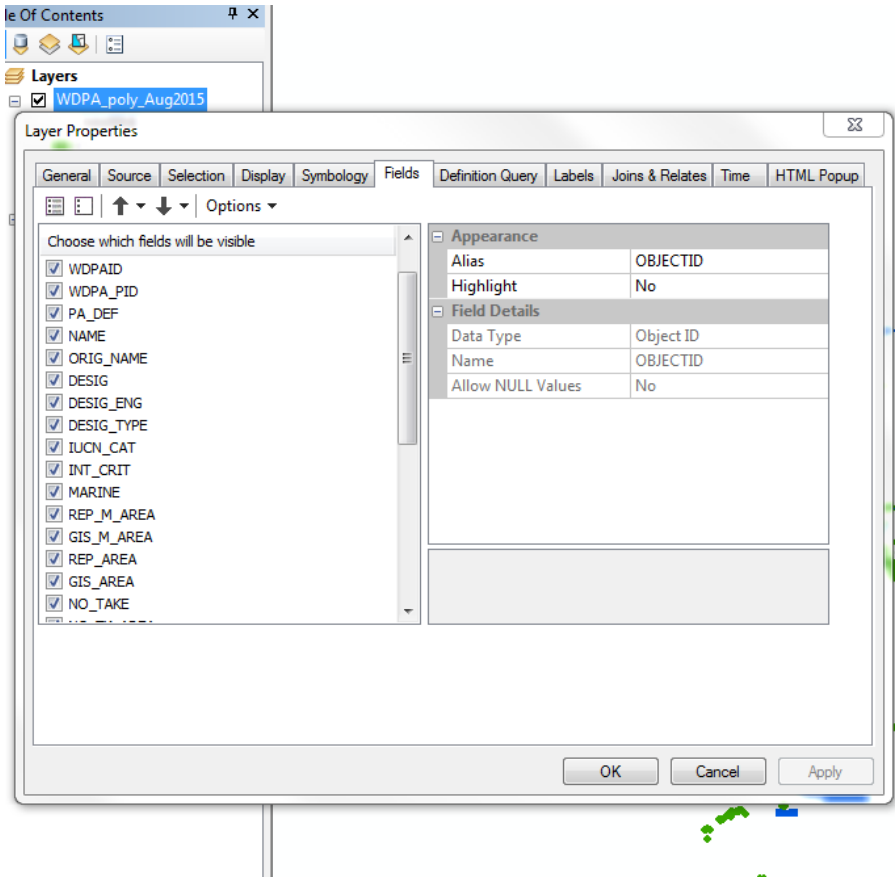
The World Database on Protected Areas

- ✓ Joint product between the United Nations Environment Programme (UNEP) and the International Union of Nature Conservation (IUCN)
- ✓ To provide authoritative and up-to-date information about protected areas and to support protected area decision-making
- ✓ To support countries in their provision of coverage statistics towards reaching the quantitative aspect of **Aichi Target 11**

The World Database on Protected Areas

- ✓ IUCN definition of a PA as primary criterion for inclusion in the database

- ✓ Geodatabase:
 - Spatial boundaries (point or polygon format)
 - Tabular information (28 descriptive fields)



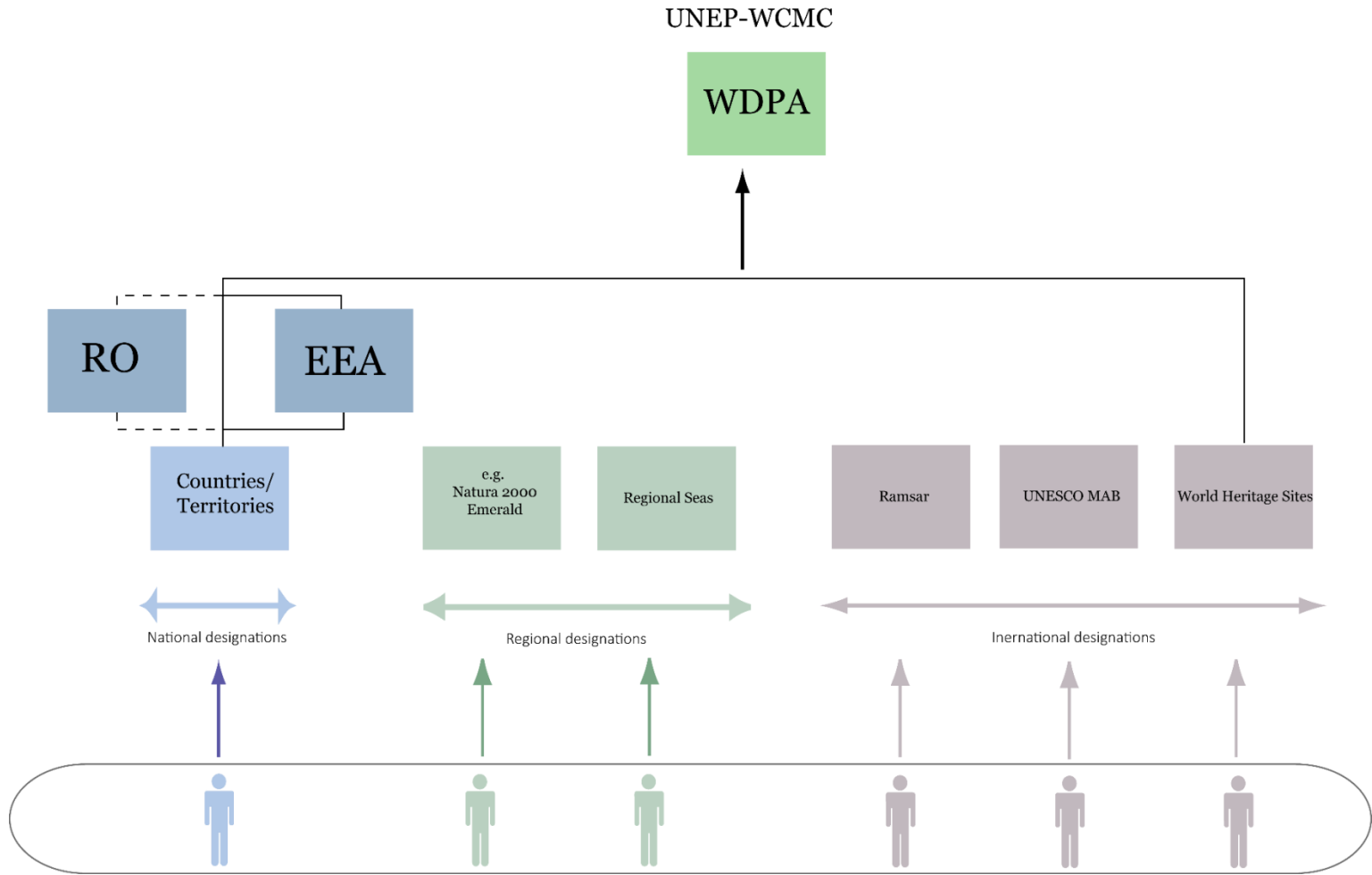
WDPA data standards

- ✓ Importance of WDPA schema and clear data standards :
- Interoperability
- Consistency
- Common format usable by all
- Importance of the WPDA_ID as a unique identifier
- ✓ Some countries and international secretariats are adopted the WDPA schema to manage their own datasets

Table 1.1 Summarised description and allowed values for the WDPA attributes. For detailed descriptions see [Appendix 1](#) in the WDPA User Manual 1.0 (UNEP-WCMC, 2015)

No	Requirement	Provided by	Field Name	Type	Length	Accepted values
1	Minimum	UNEP-WCMC	WDPAID	Number (Long Integer)	12	Assigned by WCMC. Unique identifier for a protected Area.
2	Minimum	UNEP-WCMC	WDPA_PID	Number (Long Integer)	12	Assigned by WCMC. Unique identifier for parcels or zones within a protected area.
3	Minimum	Data provider	PA_DEF	Text (String)	20	Allowed values: 1 (meets IUCN and/or CBD PA definition) ; 0 (does not meet IUCN and/or CBD PA definition).
4	Minimum	Data provider	NAME	Text (String)	254	Name of the protected area (PA) as provided by the data provider.
5	Minimum	Data provider	ORIG_NAME	Text (String)	254	Name of the protected area in original language.
6	Minimum	Data provider	DESIG	Text (String)	254	Name of designation.
7	Complete	Data provider	DESIG_ENG	Text (String)	254	Designation in English. Allowed values for international-level designations: Ramsar Site, Wetland of International Importance; UNESCO-MAB Biosphere Reserve ; World Heritage Site. Allowed values for regional-level designations: Baltic Sea Protected Area (HELCOM) ; Cartagena Special Protected Area ; Marine Protected Area (CCAMLR) ; Marine Protected Area (OSPAR) ; Site of Community Importance (Habitats Directive) ; Special Protection Area (Habitats Directive) ; Specially Protected Area of Mediterranean Importance (Barcelona Convention). No fixed values for protected areas designated at a national level.
8	Minimum	Data provider	DESIG_TYPE	Text (String)	20	Allowed values: National, Regional, International.
9	Complete	Data provider	IUCN_CAT	Text (String)	20	Allowed values: Ia, Ib, II, III, IV, V, VI, Not Applicable, Not Assigned, Not Reported
10	Minimum	UNEP-WCMC	INT_CRIT	Text (String)	100	Assigned by WCMC. For World Heritage and Ramsarsites only.
11	Minimum	Data provider	MARINE	Text (String)	20	Allowed values: 0 (Terrestrial PA), 1 (Coastal: marine and terrestrial PA), and 2 (100 % marine PA).
12	Minimum	Data provider	REP_M_AREA	Number (Double)	12	Marine area in square kilometers.
13	Minimum	UNEP-WCMC	GIS_M_AREA	Number (Double)	12	Assigned by WCMC.
14	Minimum	Data provider	REP_AREA	Number (Double)	12	Area in square kilometers.
15	Minimum	UNEP-WCMC	GIS_AREA	Number (Double)	12	Assigned by WCMC.
16	Complete	Data provider	NO_TAKE	Text (String)	50	Allowed values: All, Part, None, Not Reported, Not Applicable (if Marine field = 0).

Data collection



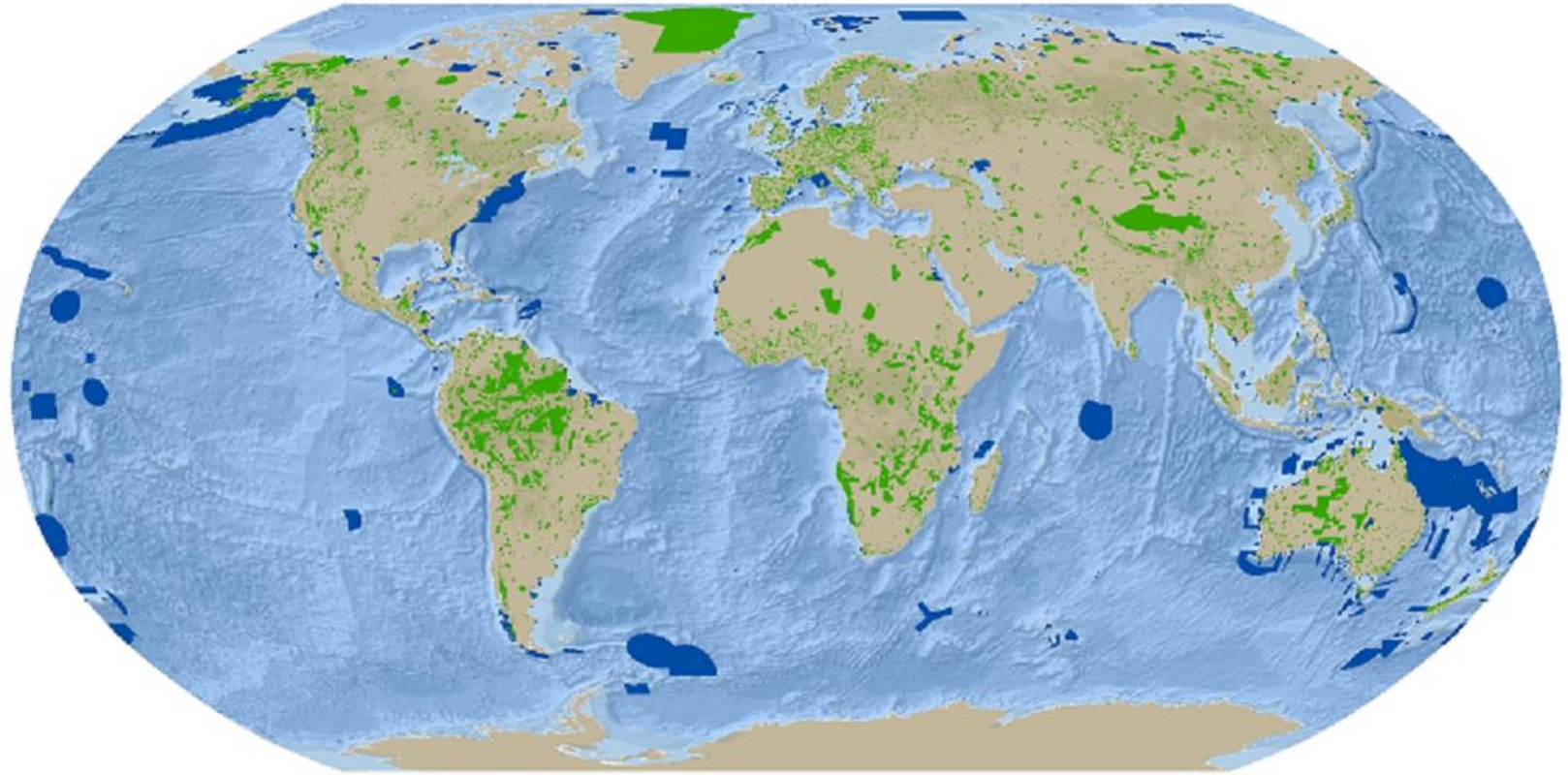
✓ 538 data sources

Challenges:

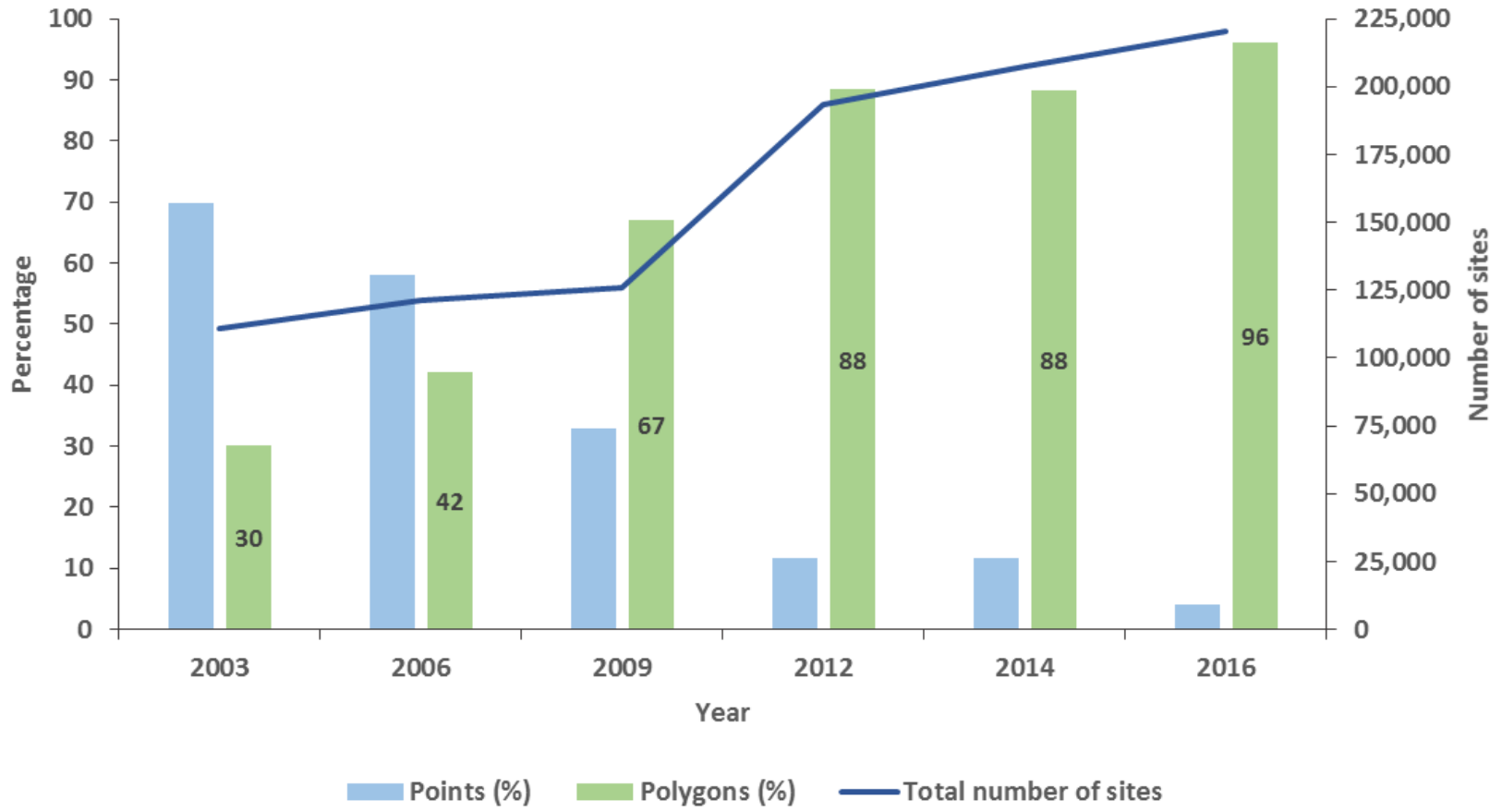
- No response
- Countries lack capacity to engage
- Limited technical capacity
- Complex governance structures
- Different definitions of PAs

The World Database on Protected Areas

- ✓ Currently storing over 220,000 protected areas from more than 190 countries and territories
- ✓ Approximately 5% of sites as point records

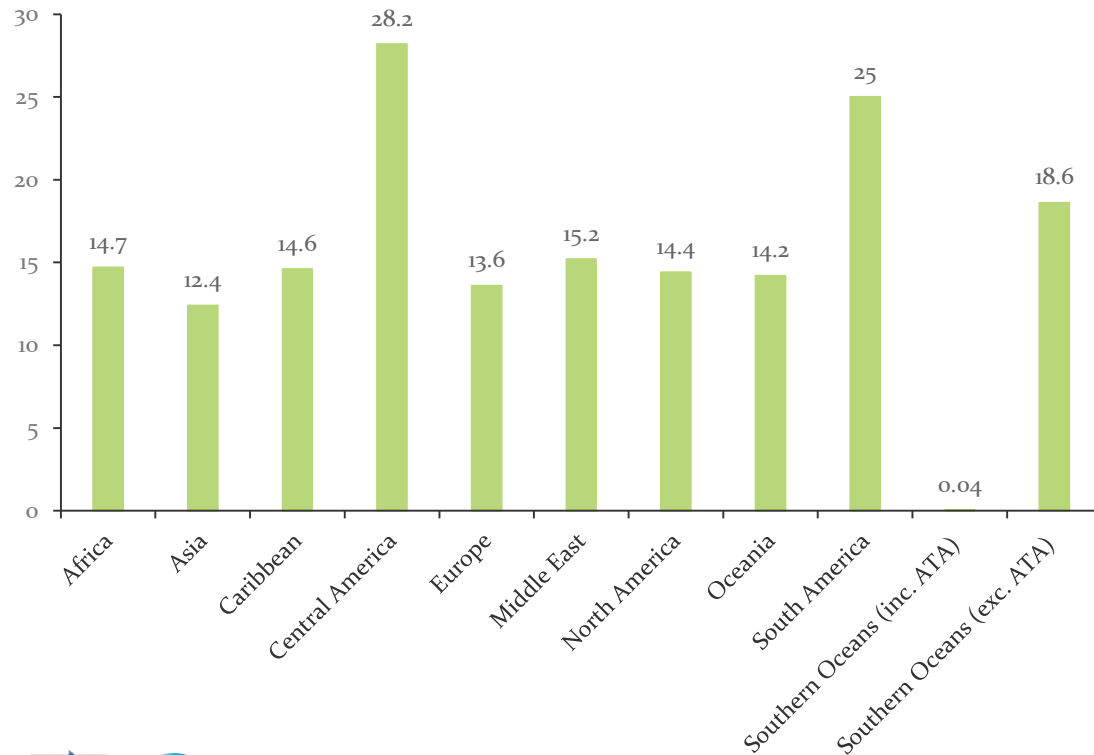


The World Database on Protected Areas

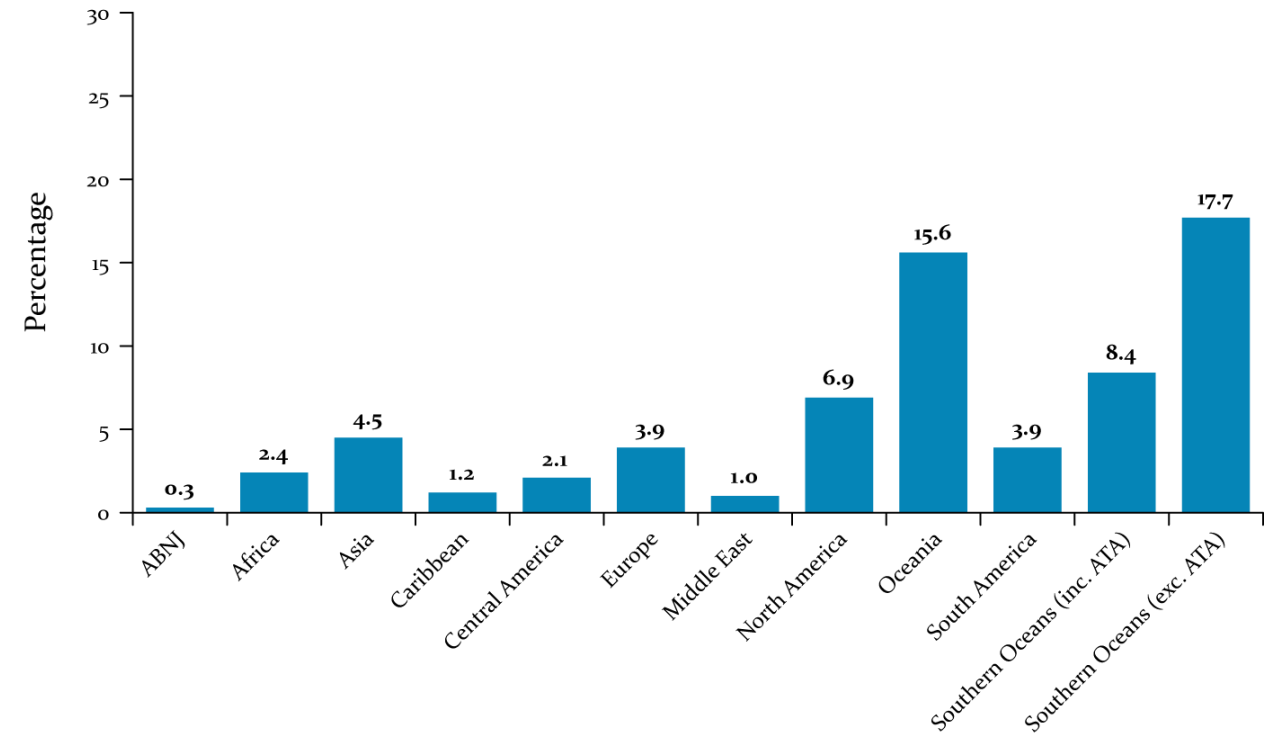


Where are the sites?

Percentage of terrestrial area covered with PAs in the regions

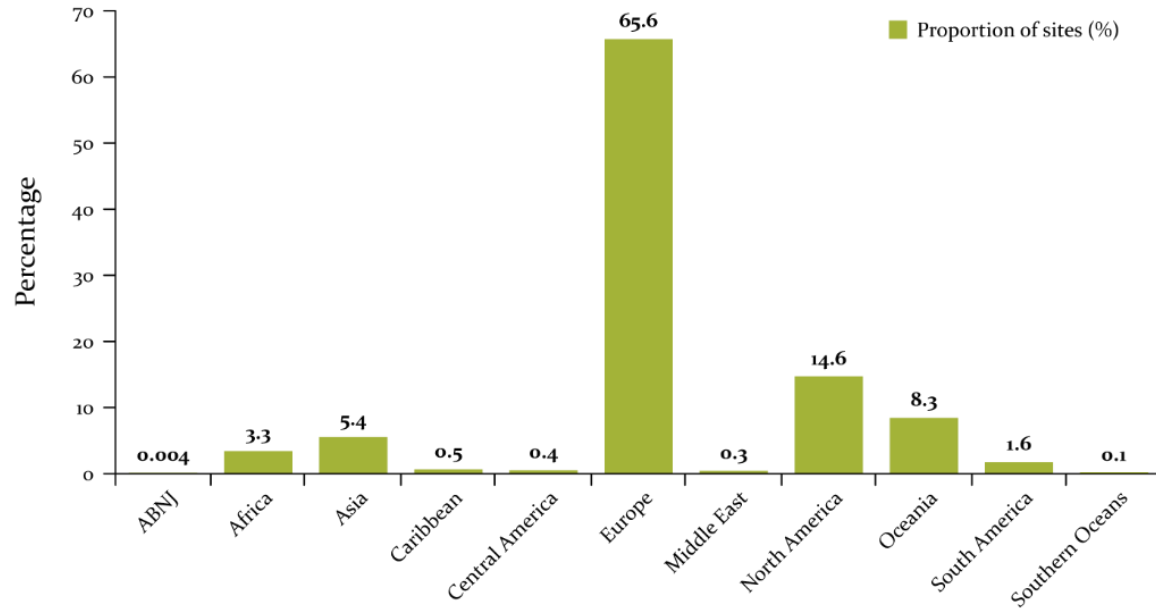


Percentage of marine area covered with PAs in the regions

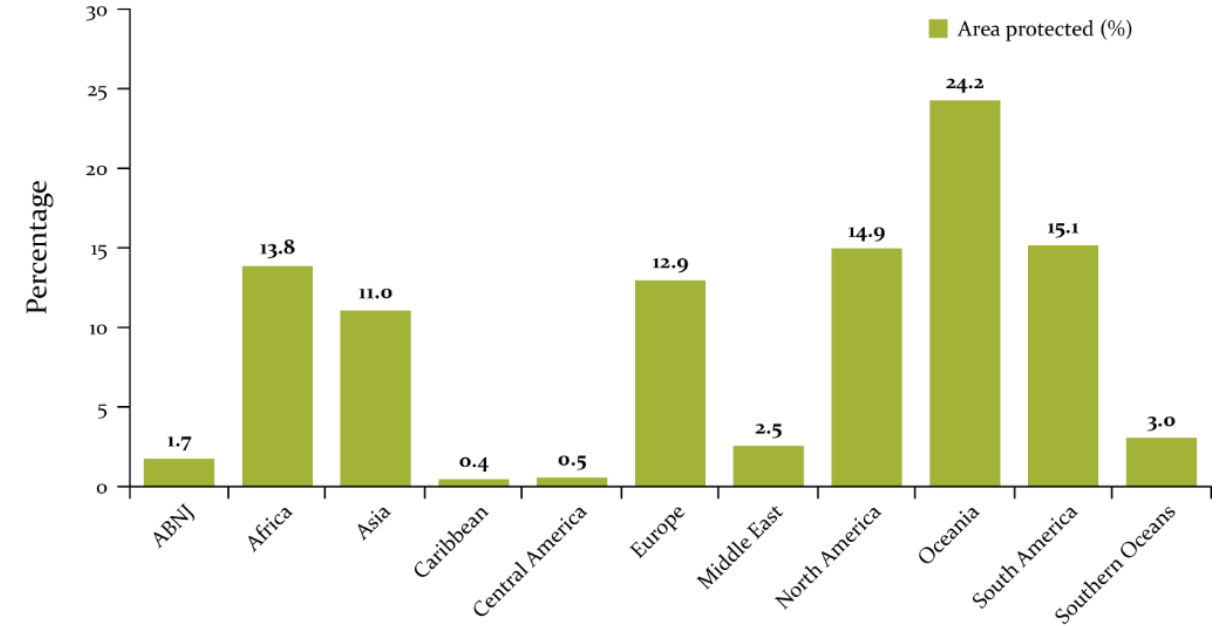


Where are the sites?

Number of sites

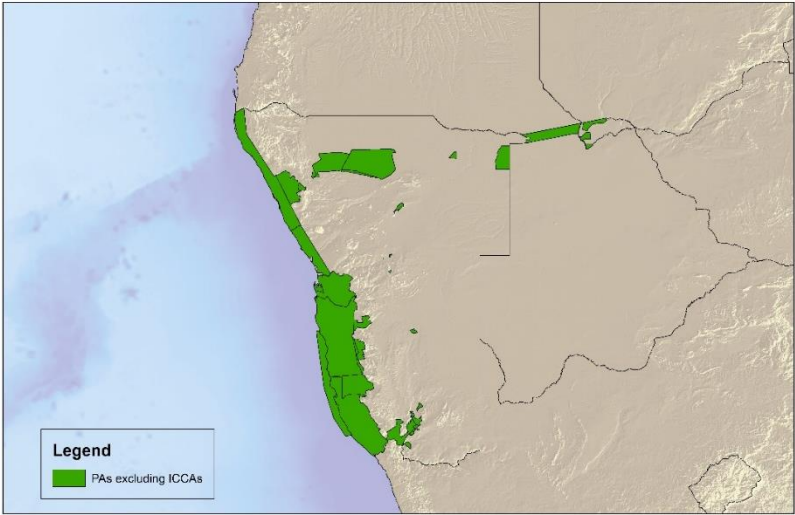


Area



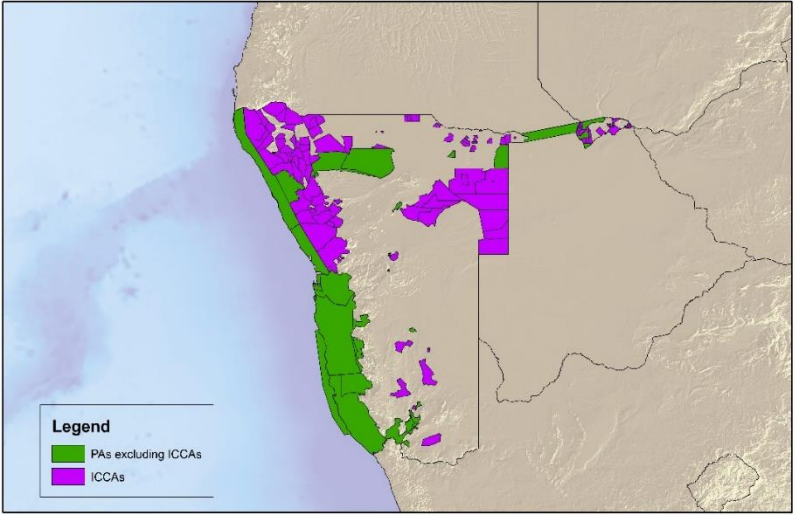
Beyond PAs..OECMs and ICCAs

ICCAs in Namibia



34 protected areas

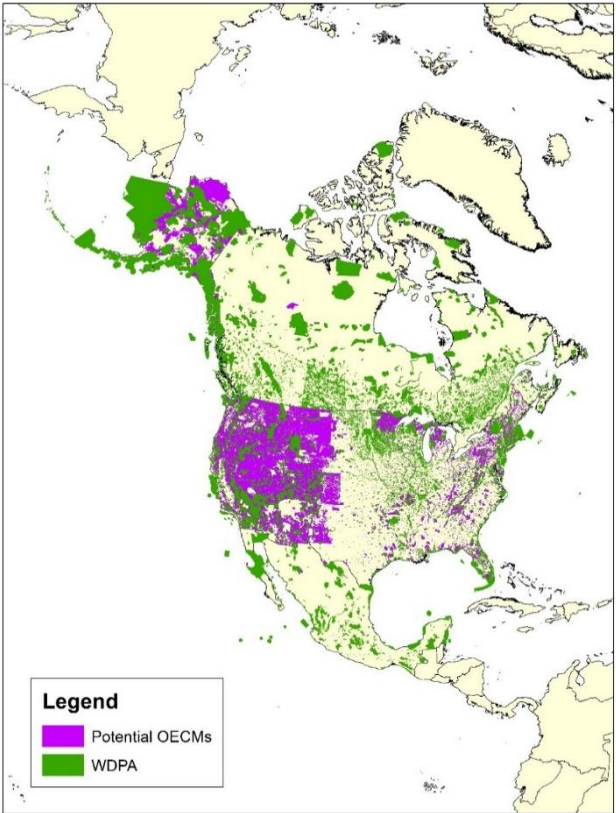
159,000km²



112 additional protected areas

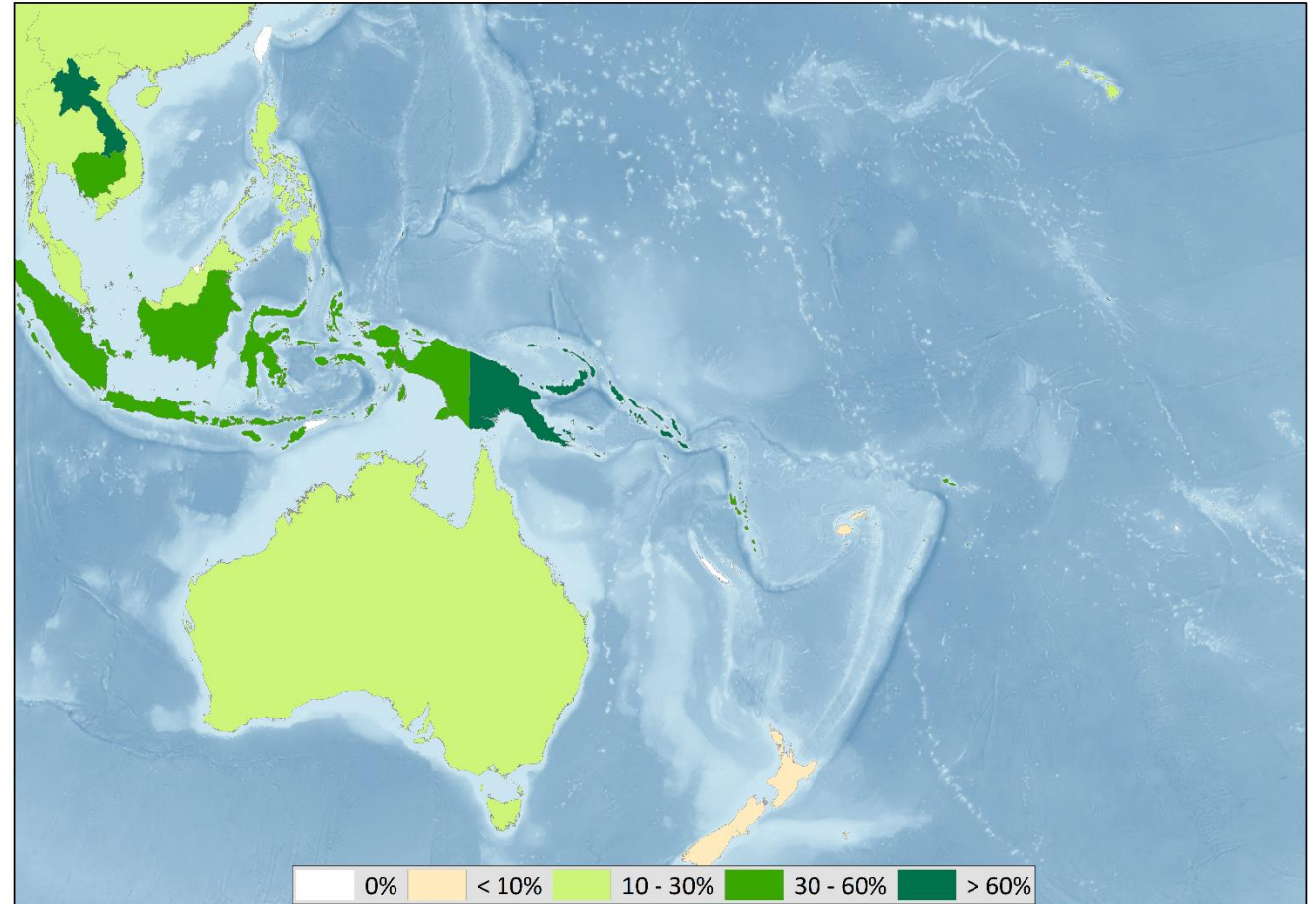
Additional 164,000km²

OECM in Canada, USA, Mexico



Management Effectiveness (PAME)

- ✓ 17,739 protected areas management assessments for 9,037 PAs recorded in the GD-PAME.
- ✓ 5,248 assessments through more than 12 different tools recorded for the Oceania region



Uses of Protected Planet

- ✓ Importance of well represented country protected area networks
- ✓ Uses of the WDPA for selected reporting mechanisms and periodic reports:
 - UN List of Protected Areas
 - UN Sustainable Development Goals, formerly MDGs
 - CBD Global Biodiversity Outlook
 - Protected Planet Reports

But also used by academics (in 2013, 283 peer reviewed publications cited the WDPA)

- ✓ Identifying where to expand a PA network: Spatial conservation planning projects in Colombia and Korea.



Status of PA data of the Pacific countries in the WDPA

Country	N_poly	N_point	Total	National_year_of_update
Samoa	1	83	84	1987, 1988, 2003, 2008
Solomon Islands	52	43	95	2004, 2008, 2015
Tonga	8	14	22	1990, 2003, 2015
Tuvalu	6	0	6	2015
Niue	0	5	5	2005, 2015
Federated States of Micronesia	3	21	24	1995, 2003, 2004, 2007, 2015
Kiribati	2	14	16	2005, 2008, 2015
Marshall Islands	14	2	16	2015
Nauru	0	0	0	-
Palau	11	18	29	2003, 2005, 2015
Papua New Guinea	55	16	71	2005, 2015
Vanuatu	13	22	35	1990, 2003, 2004, 2007, 2010
Fiji	122	23	145	2015

Vinaka!

Ed Lewis
edward.lewis@unep-wcmc.org

Marine Deguignet
marine.deguignet@unep-wcmc.org

 @protectedplanet

 Protected Planet

<http://www.protectedplanet.net/>