



SPREP

Secretariat of the Pacific Regional
Environment Programme



10th Pacific Islands Conference

**NATURE CONSERVATION
AND PROTECTED AREAS**

Nature Conservation Action for a Resilient Pacific



**SOUTH PACIFIC
TOURISM
ORGANISATION**



An initiative of the African, Caribbean and Pacific Group of
States funded by the European Union

ACP MEAs 2

Environmental Impact Assessment Guidelines for Coastal Tourism Development in Pacific Island Countries and Territories





SPREP

Secretariat of the Pacific Regional
Environment Programme



10th Pacific Islands Conference

NATURE CONSERVATION AND PROTECTED AREAS

Nature Conservation Action for a Resilient Pacific



Tourists are often looking for cultural and environmentally friendly options for their holidays. Appropriate use of low impact attractions can be a drawcard for these types of holidays. The EIA process can help to identify environmentally sustainable options for your development.



SPREP

Secretariat of the Pacific Regional
Environment Programme



10th Pacific Islands Conference

NATURE CONSERVATION AND PROTECTED AREAS

Nature Conservation Action for a Resilient Pacific



© Stéphane Ducandas / NCTPS

Coral reefs provide coastal protection, improve water quality, attracting both marine life and tourists. Tourism developments and ventures need to protect these areas and not cause unintended impacts through increased demand for fresh fish in restaurants, souvenir trade, waste or poorly guided tours directly damaging corals.



SPREP

Secretariat of the Pacific Regional
Environment Programme



10th Pacific Islands Conference

NATURE CONSERVATION AND PROTECTED AREAS

Nature Conservation Action for a Resilient Pacific



Be it for small or large scale developments



Pacific Islanders are intrinsically linked to the coastal zone through our relationship with the sea



SPREP

Secretariat of the Pacific Regional
Environment Programme



10th Pacific Islands Conference

NATURE CONSERVATION AND PROTECTED AREAS

Nature Conservation Action for a Resilient Pacific



Culture and the environment are interwoven and visitors are seeking these authentic experiences, tourism can have a positive impact on preserving cultural knowledge and skills.



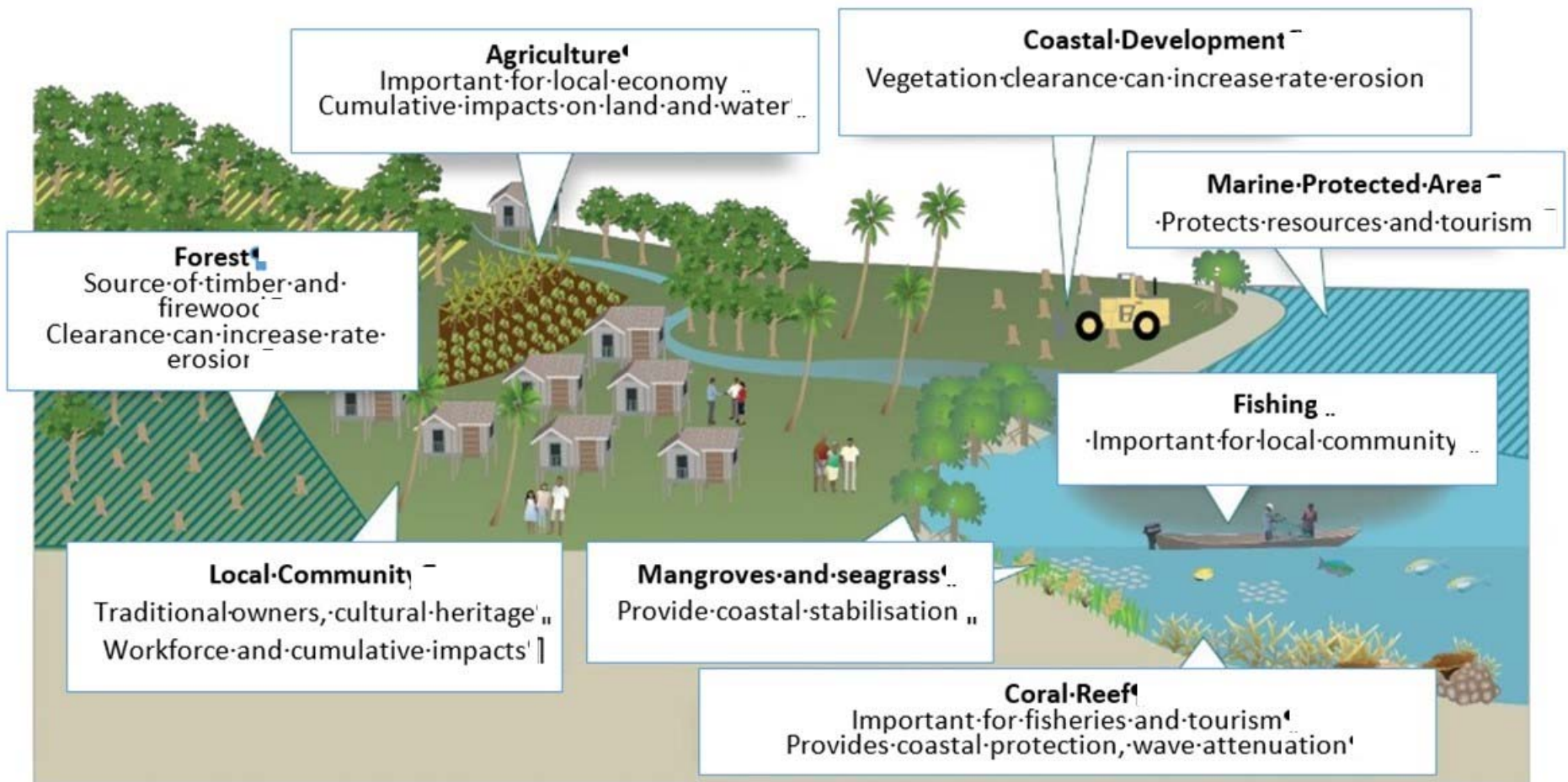
SPREP
Secretariat of the Pacific Regional



10th Pacific Islands Conference

**NATURE CONSERVATION
AND PROTECTED AREAS**

Nature Conservation Action for a Resilient Pacific



Good Coastal Developments take into account the interdependencies of other activities and the environment



SPREP

Secretariat of the Pacific Regional
Environment Programme



10th Pacific Islands Conference

NATURE CONSERVATION AND PROTECTED AREAS

Nature Conservation Action for a Resilient Pacific



Tourism brings opportunities
but impacts need management



Waste management and pollution control remains one of the most pressing environmental issues in Pacific islands. Tourism is dependent on a beautiful Pacific so it is vital developments contribute to proper waste management.

Photo: Paul Anderson



The objective of the EIA is to **prevent and mitigate undue harm to people and their natural environment** in the development process.





SPREP

Secretariat of the Pacific Regional
Environment Programme



10th Pacific Islands Conference

NATURE CONSERVATION AND PROTECTED AREAS

Nature Conservation Action for a Resilient Pacific



Tourism developments may be privately funded or government initiatives but all are subject to the same laws governing each country's EIA process.

With good planning, tourism can bring benefits to all parties





SPREP

Secretariat of the Pacific Regional
Environment Programme



10th Pacific Islands Conference

NATURE CONSERVATION AND PROTECTED AREAS

Nature Conservation Action for a Resilient Pacific

