

Protected Planet

Brian MacSharry
Protected Areas Programme
UNEP-WCMC

protectedplanet.net
brian.macsharry@unep-wcmc.org

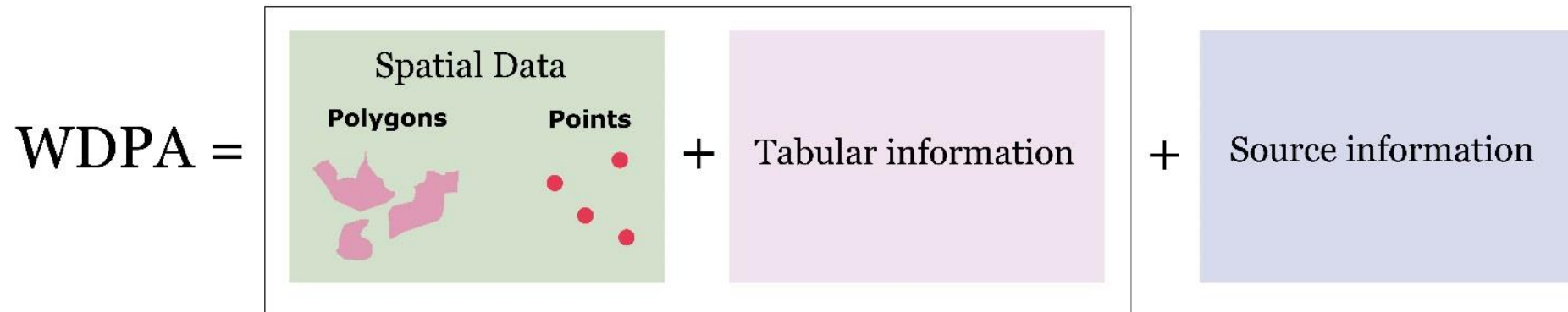
World Database on Protected Areas

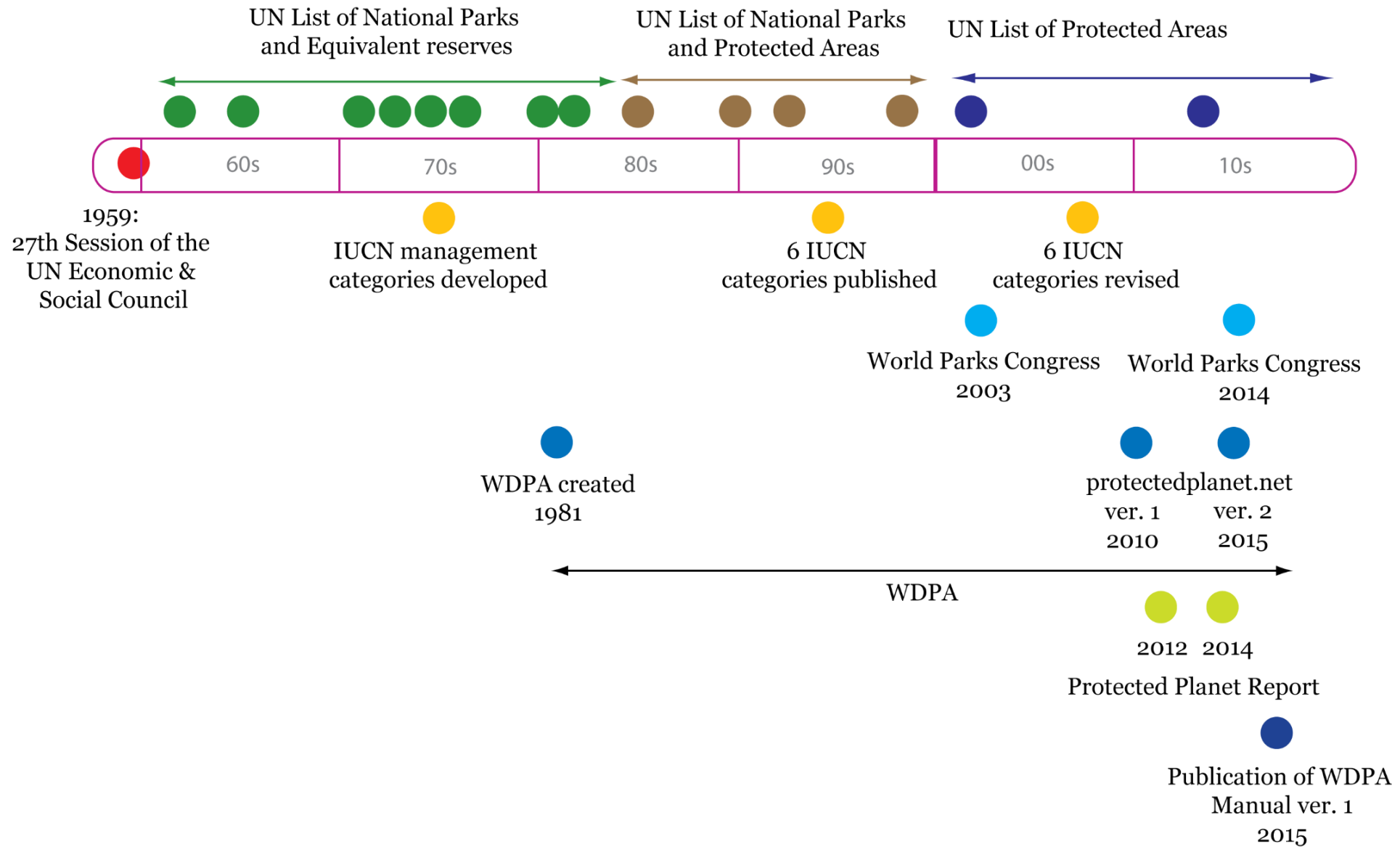
World Database on Protected Areas

The only global authoritative **database** on terrestrial and marine **protected areas**.

A joint initiative between the United Nations Environment Programme (**UNEP**) and the International Union for Conservation of Nature (**IUCN**).

Compiled and managed by the UNEP World Conservation Monitoring Centre (**UNEP-WCMC**) in collaboration with governments and non-governmental organizations





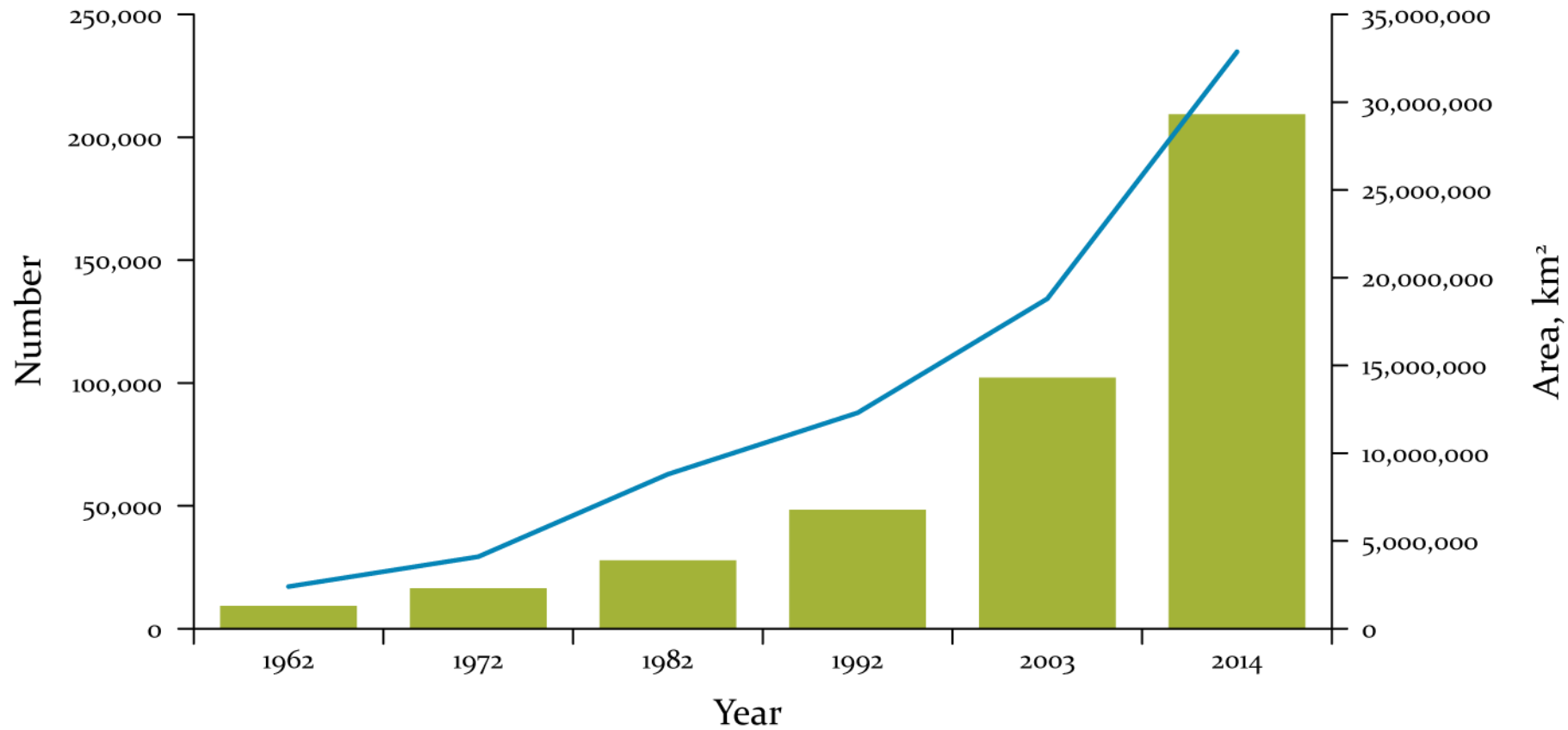


Figure 3: Evolution of the terrestrial and marine protected area network, in numbers of sites (green bars) and in area (km²; blue line) since the first World Park Congress in 1962 based on previous versions of the UN List (Source: UNEP-WCMC 2014, with data from Chape et al. 2003).

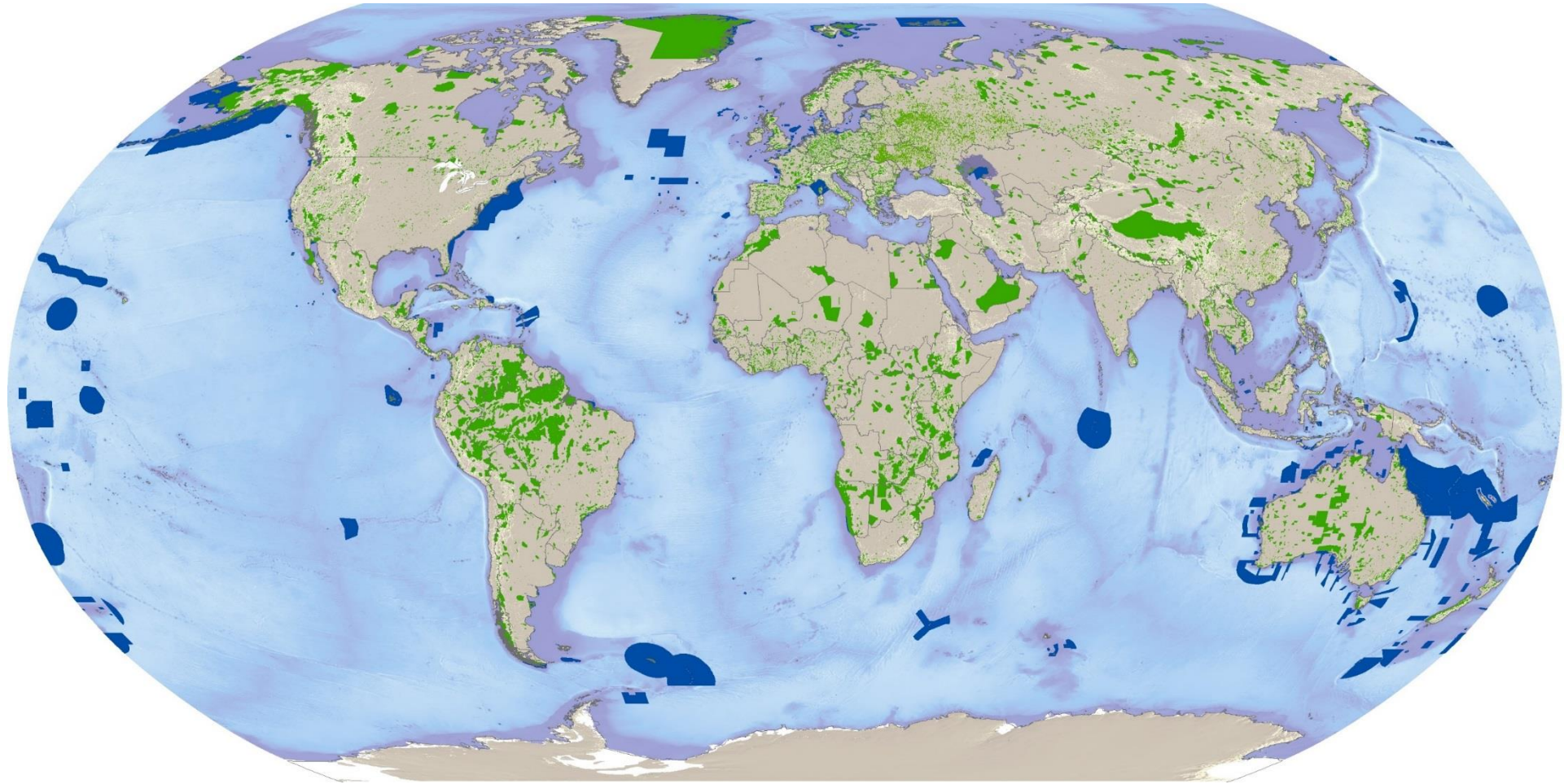
WDPA in November 2015

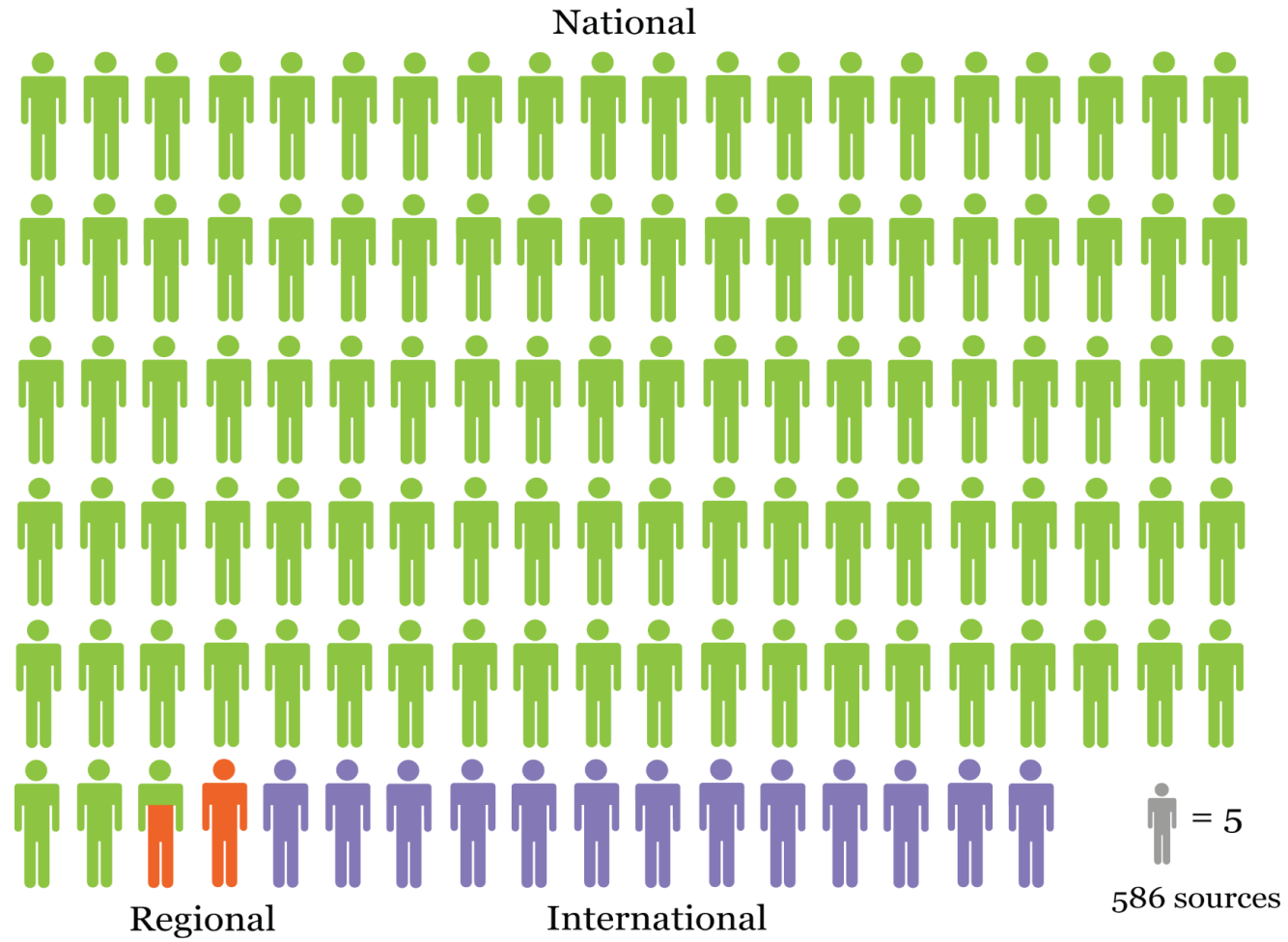
WDPA November 2015

217 904 records

Over 217 700 records from over 240 countries and territories

Over 18 000 records have a marine component





WDDPA

91.3%

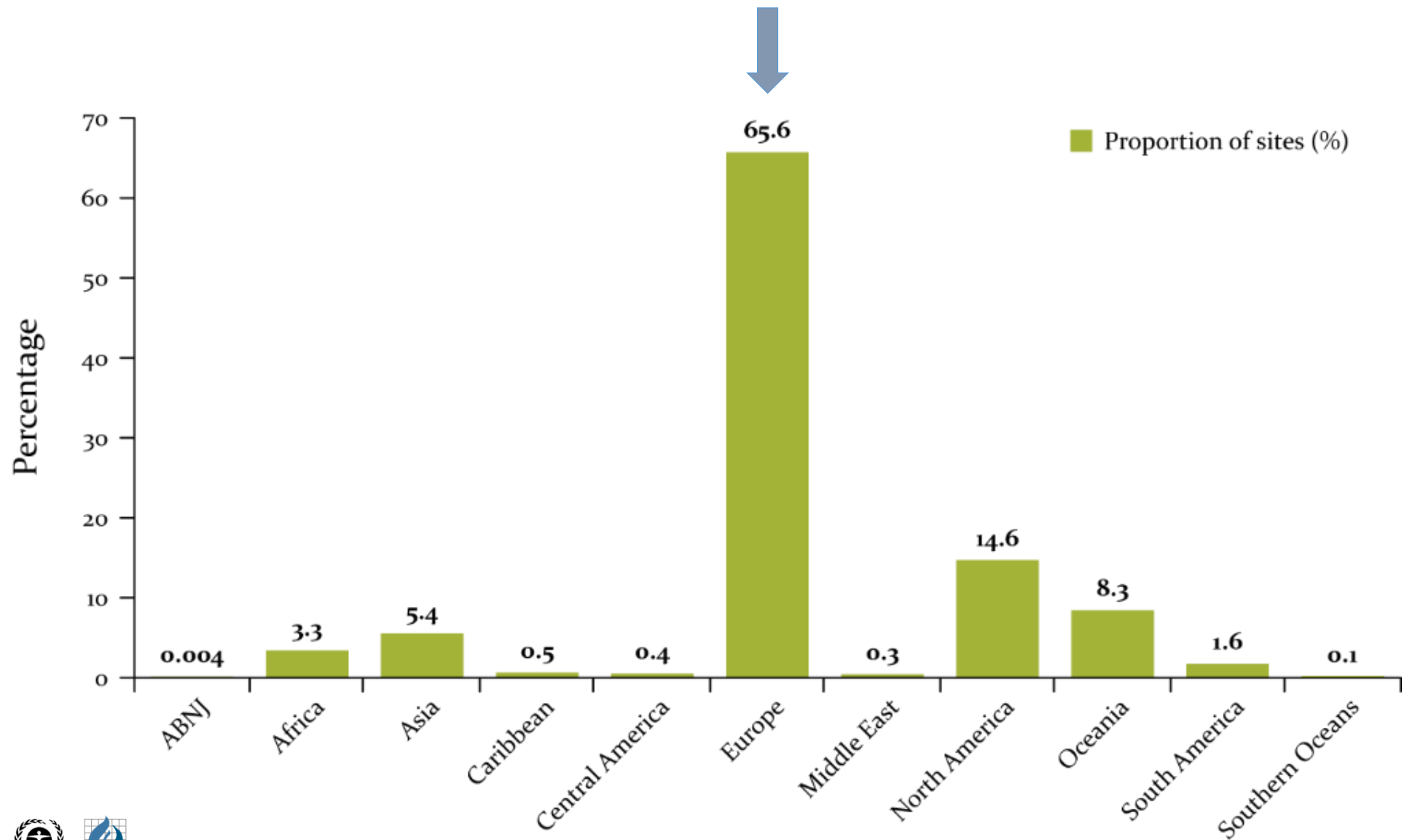
Polygons

8.7%

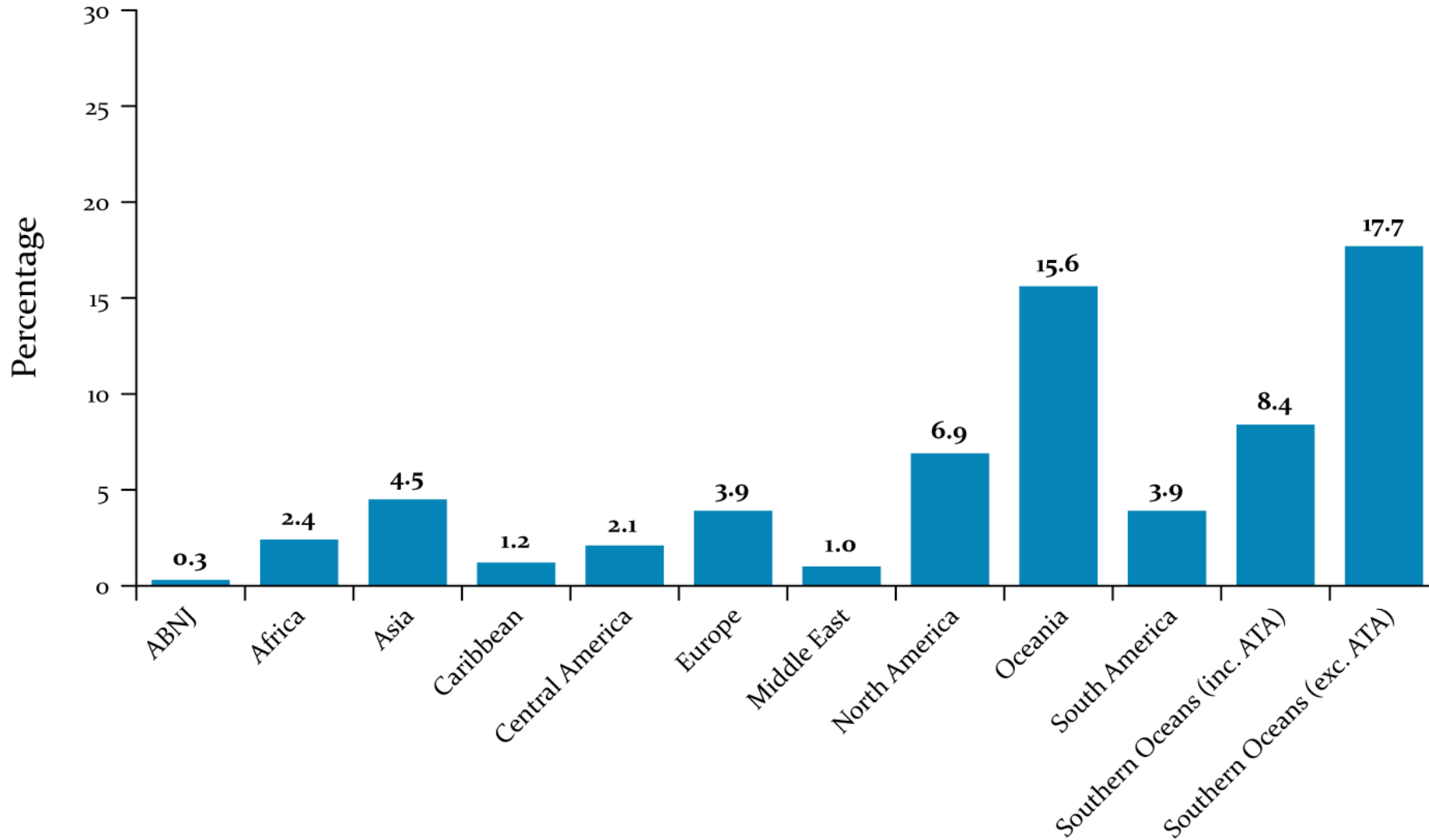
Points

Where are sites

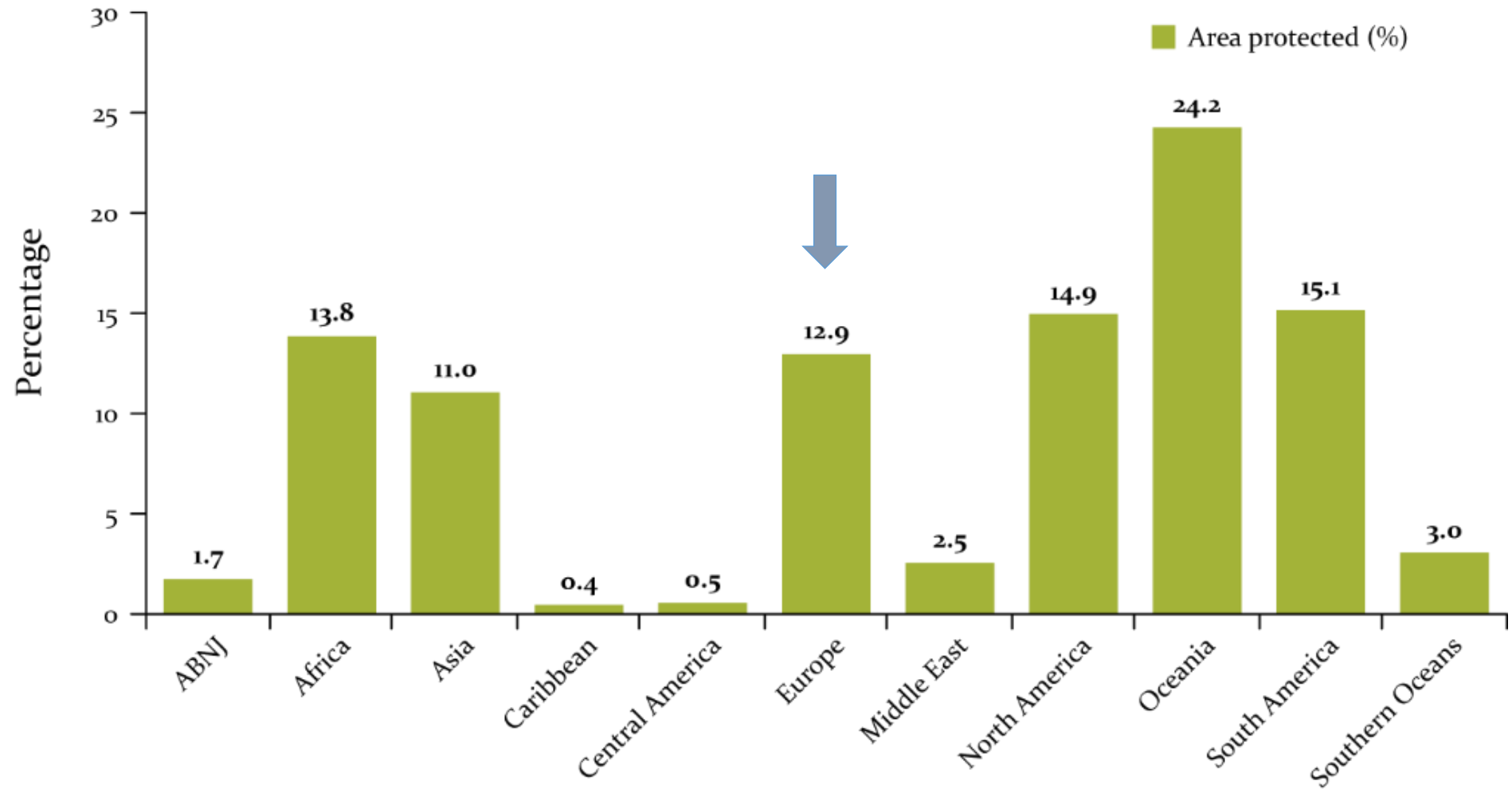
Number of sites.



Percentage of Marine areas covered .



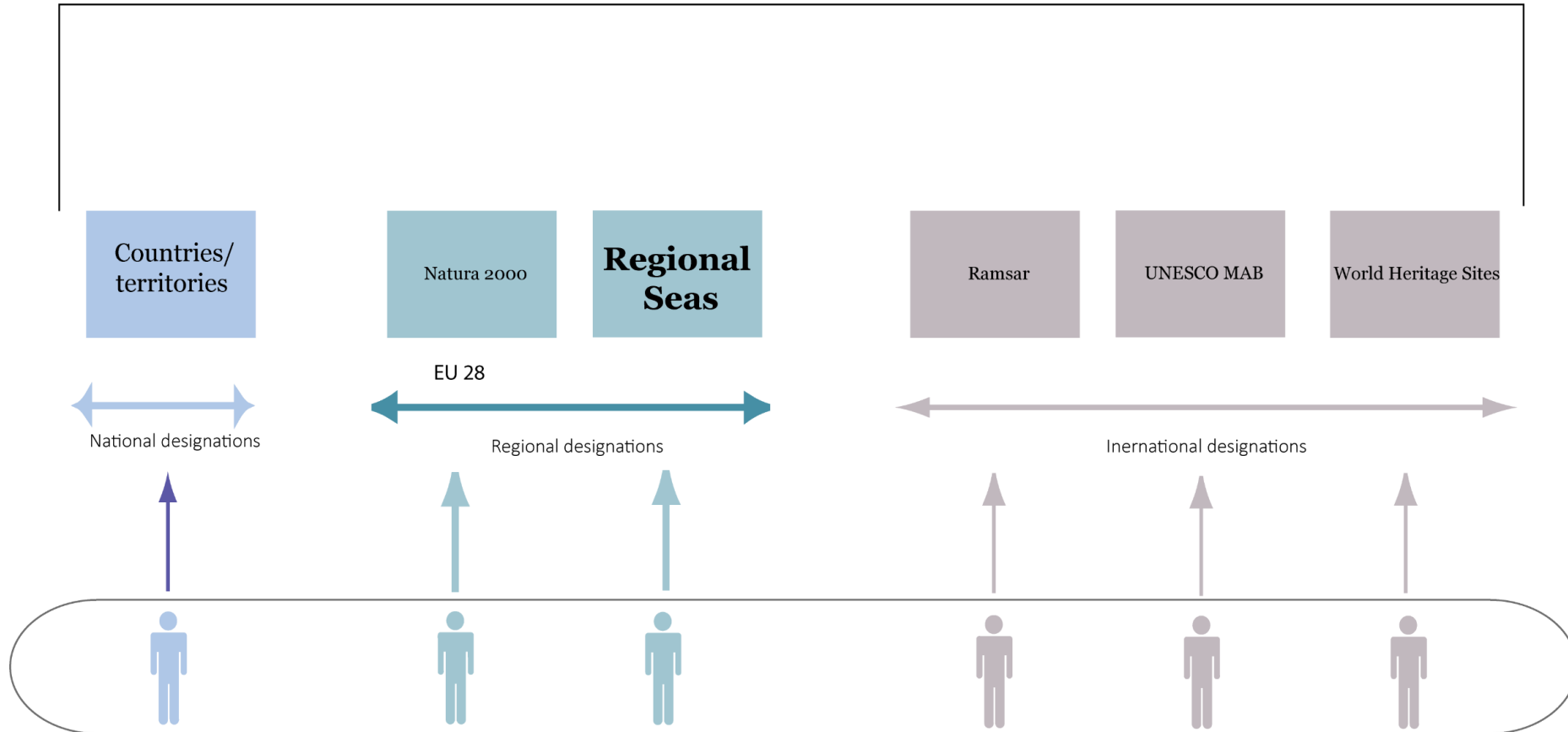
By area.



How does data get into the WDPA?

UNEP-WCMC

WDPA



What it is used for..

Publications & indicators

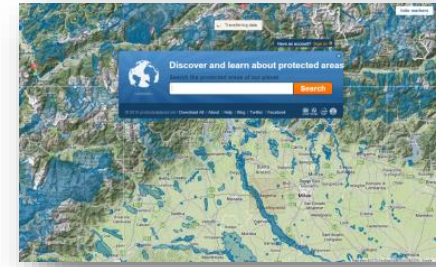
- Millennium Development Goals (Goal 7)
- CBD Aichi Targets
- Global Biodiversity Outlook
- Protected Planet Report (bi-annual)
- Global Reporting Initiative

Online systems

- DOPA
- Protected Planet
- IBAT

Multiple sectors

- Business, bank & industry users
- Scientists & researchers
- Government, NGO & communities





Protected planet website
protectedplanet.net

www.protectedplanet.net #FAFAFA

Most Visited Getting Started Save to Mendeley

protected planet ABOUT REPORTS UN LIST

Terrain Satellite + -

Start Exploring

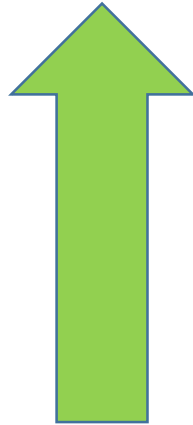
Search the protected areas of our planet Search

- Download WDPA dataset ↓
- CSV
- KML
- SHP
- ESRI Web Service

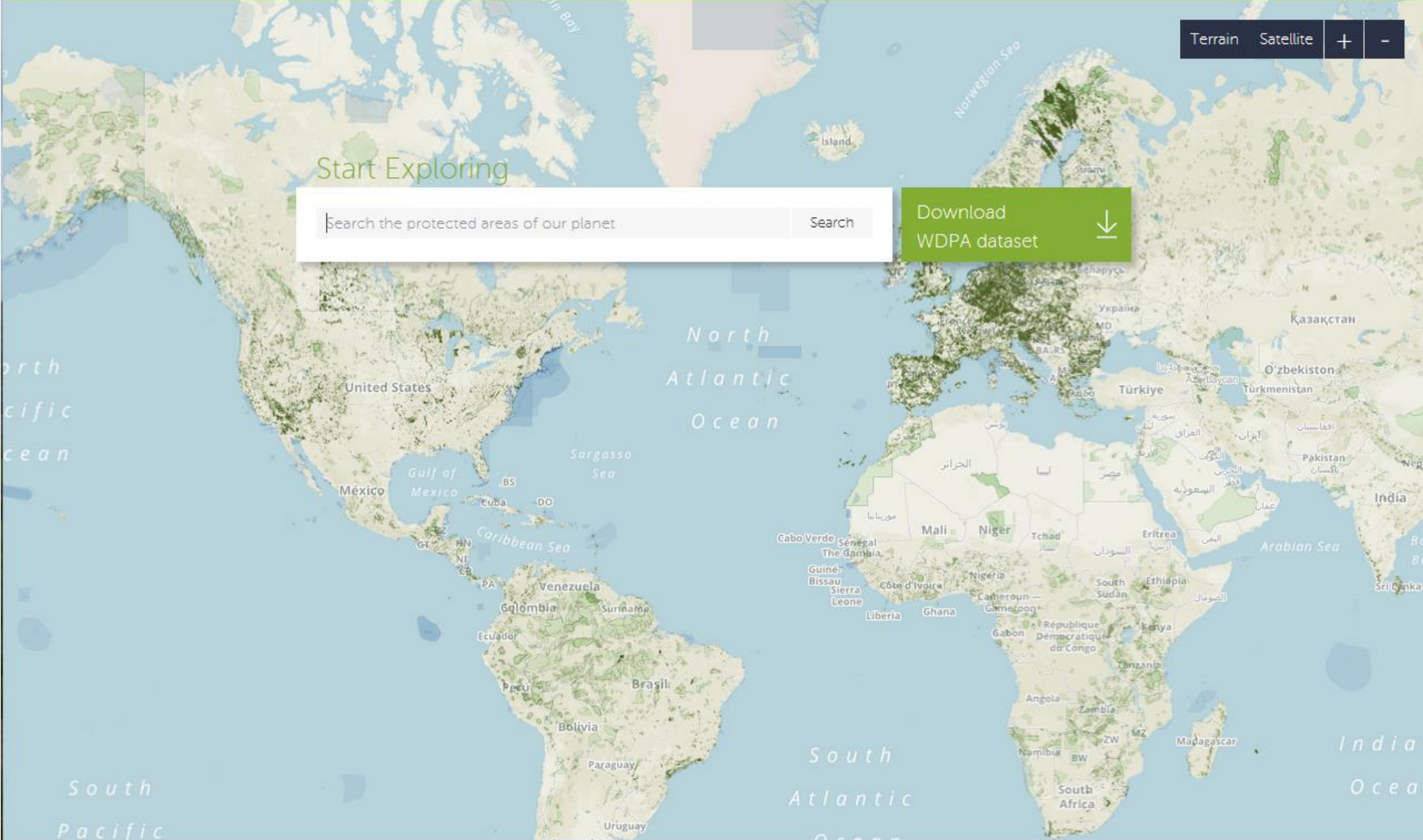
The boundaries and names shown, and the designations used on this map do not imply official endorsement or acceptance by the United Nations or IUCN.

UNEP WCMC IUCN © ProtectedPlanet 2014. All rights reserved About Terms of Use Send Feedback





WDPA



The boundaries and names shown, and the designations used on this map do not imply official endorsement or acceptance by the United Nations or IUCN.



You searched for "Peak District" 200 results

DOWNLOAD
WDPA DATASET



Filters

REGION

- North America (133)
- Oceania (32)
- Asia (15)
- Europe (13)
- Latin America and Caribbean (6)
- Other (1)

DESIGNATION

- Wilderness Area (30)
- Wilderness Study Area (17)
- Research Natural Area (17)
- Waterfowl Production Area (10)
- Area Of Critical Environmental Concern (9)
- Private Conservation Land (9)
- National Park (7)
- Locally Managed Marine Area (6)
- Stewardship Area (5)
- Local Conservation Area (5)

IUCN CATEGORY



Peak District
National Park

United Kingdom of Great Britain and Northern Ireland, Europe



Eastern Peak District Moors
Site of Special Scientific Interest ...

United Kingdom of Great Britain and Northern Ireland, Europe



Peak District Dales
Site of Community Importance (...)

United Kingdom of Great Britain and Northern Ireland, Europe



Peak District Moors (South Penn...
Special Protection Area (Birds Di...

United Kingdom of Great Britain and Northern Ireland, Europe



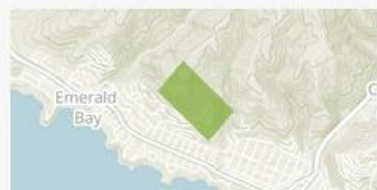
Tawake district
Locally Managed Marine Area

Fiji, Oceania



Lake District
National Park

United Kingdom of Great Britain and Northern Ireland, Europe



Water District
Open Space

United States, North America



Hopkins District
Private Conservation Land

United States, North America



Rakiraki District
Locally Managed Marine Area



Tavua District
Locally Managed Marine Area



Raviravi District
Locally Managed Marine Area



Sawau District
Locally Managed Marine Area



Official Record for Peak District

United Kingdom of Great Britain and Northern Ireland, Europe

WDPA ID	963
Reported Area KM ²	1438.0
English Designation	National Park
IUCN Category	V

Data Provider
European Environment Agency (EEA)

Status	Type of Designation
Designated	National

Status Year	Sublocation
1951	GB-ENG

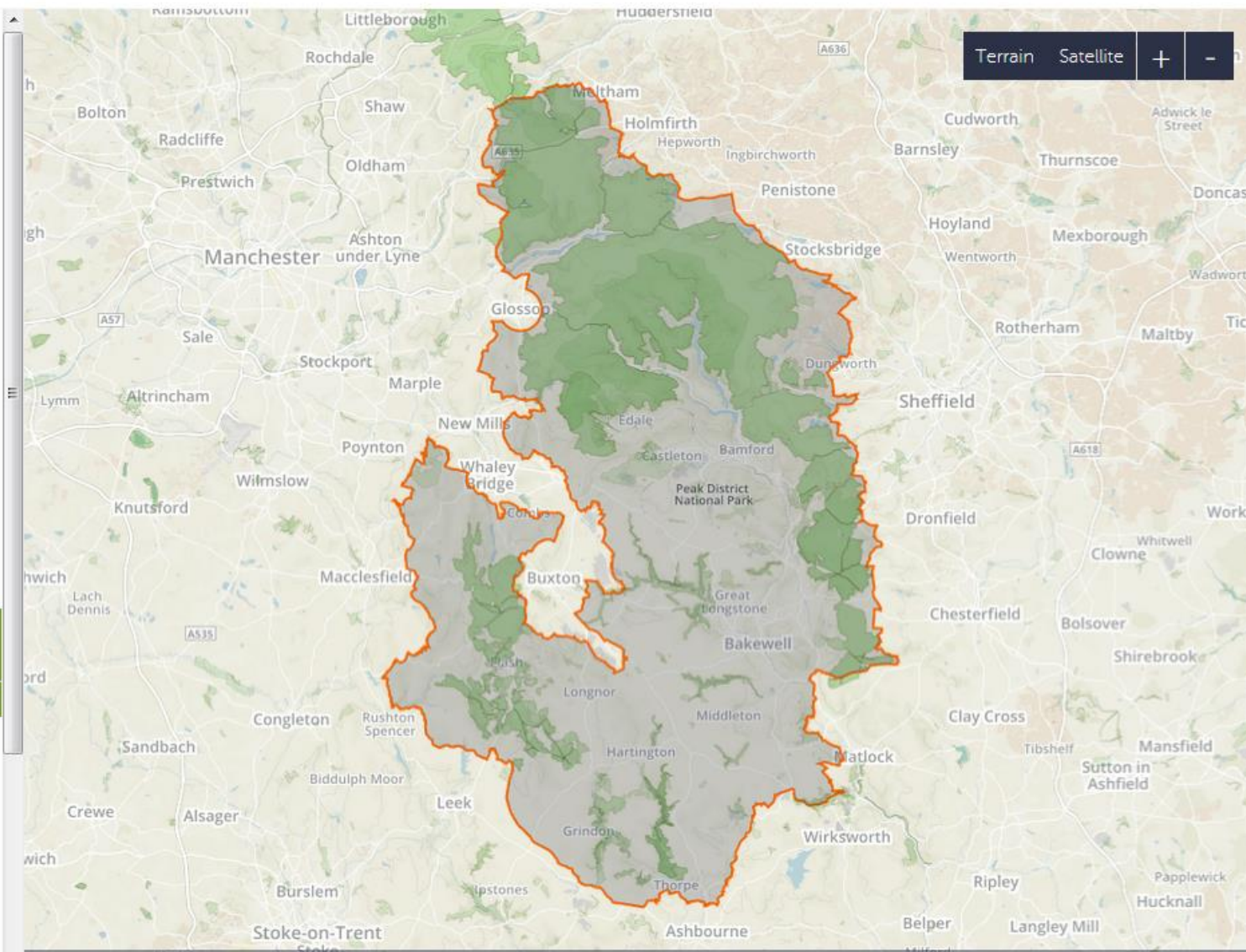
Governance Type
Federal or national ministry or agency in charge

87.5% Data Complete

Related

Wikipedia article

Nearest Protected Areas



The boundaries and names shown, and the designations used on this map do not imply official endorsement or acceptance by the United Nations or IUCN.



United Kingdom of Great Britain and Northern Ireland, Europe

10,960 Protected Areas

Compare Countries

DOWNLOAD
WDPA DATASET



Protected Areas Value

140,493.77 km²

69,953.19 Km² Land - 70,540.57 Km² Marine
13.77% Protected



28.43%
Land Area Protected

9.11%
Marine Area Protected

246,096.9
Km² Land Area

774,416.99
Km² Marine Area

69,953.19
Km² Protected

70,540.57
Km² Protected

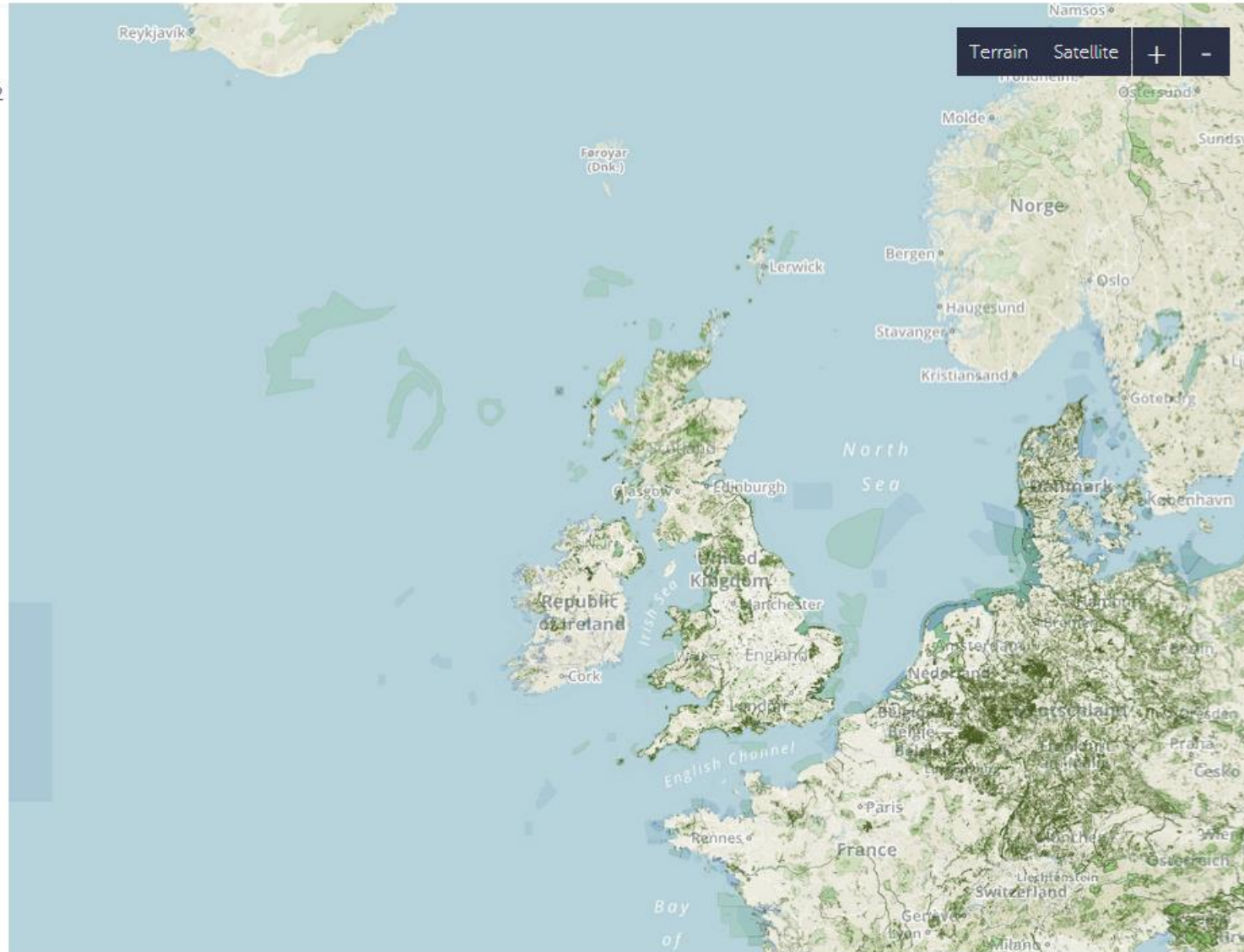
Conservation Statistics

10,960

Protected Areas

13.77% Protected

9,307 Protected Areas have an IUCN Category. IUCN has defined a series of six protected area management categories, based on primary management objectives.



The boundaries and names shown, and the designations used on this map do not imply official endorsement or acceptance by the United Nations or IUCN.





United Kingdom of Great Britain and Northern Ireland, Europe

Comparing: Ireland, Europe Compare Countries

DOWNLOAD
WDPA DATASET



Protected Areas Value

140,493.77 km²

69,953.19 Km² Land - 70,540.57 Km² Marine
13.77% Protected



28.43%
Land Area Protected



9.11%
Marine Area Protected

246,096.9
Km² Land Area

69,953.19
Km² Protected

774,416.99
Km² Marine Area

70,540.57
Km² Protected

Conservation Statistics

10,960
Protected Areas

13.77% Protected

9,307 Protected Areas have an IUCN Category. IUCN has defined a series of six protected area management categories, based on primary management objectives.

Ia (17)

II (5)

Protected Areas Value

16,685.63 km²

10,089.14 Km² Land - 6,596.5 Km² Marine
3.48% Protected



14.39%
Land Area Protected



1.61%
Marine Area Protected

70,124.0
Km² Land Area

10,089.14
Km² Protected

409,004.21
Km² Marine Area

6,596.5
Km² Protected

Conservation Statistics

790 Protected Areas 3.48% Protected

155 Protected Areas have an IUCN Category. IUCN has defined a series of six protected area management categories, based on primary management objectives.

IV (155)

Not Reported (588)

Brian MacSharry

Protected Areas Programme, UNEP-WCMC

Brian.macsharry@unep-wcmc.org

www.protectedplanet.net

