



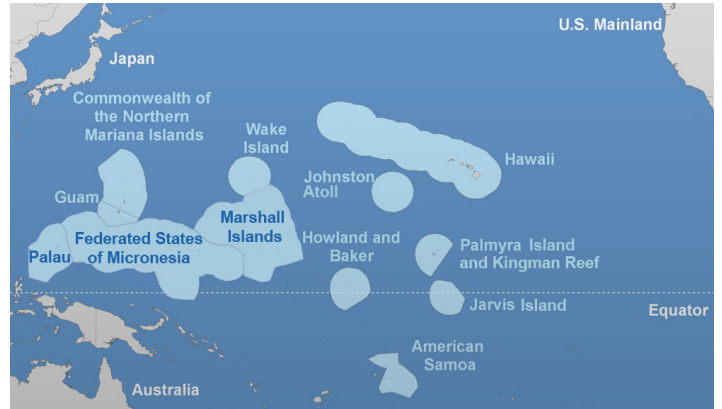
## by observing we learn

### Preserving Oceans and Preserving Lives

Ocean and beach quality throughout the Pacific Islands Region affect economies, environments, public health, and environmental safety. The Pacific Islands Ocean Observing System (PacIOOS) works to effectively provide the vital scientific information that decision-makers and ocean users need in order to positively enhance the daily lives of those in the Pacific region.

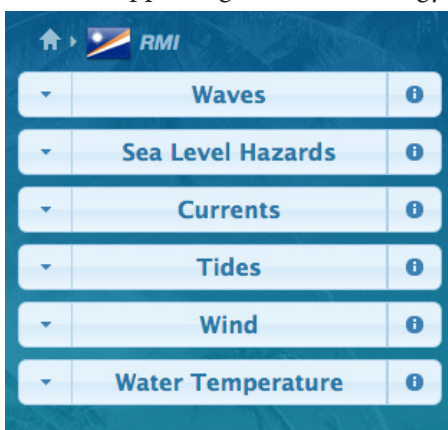
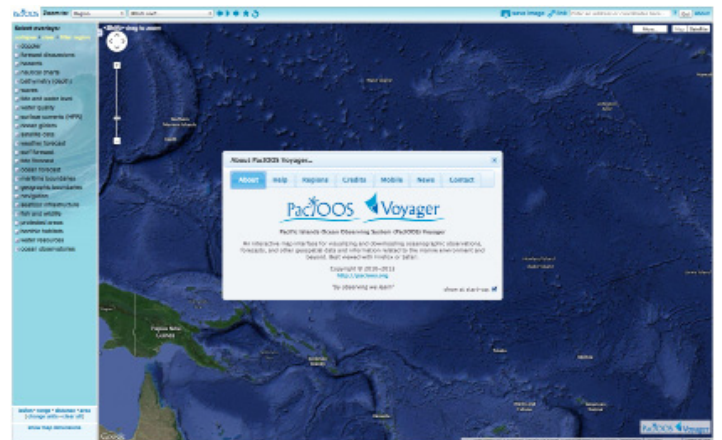
PacIOOS specifically addresses:

- **Coastal Hazards Resilience** by providing high water level forecasts, and inundation events in coastal areas in order to promote safety;
- **Maritime Safety and Security** by serving reliable information concerning ocean and harbor conditions that help to improve search-and-rescue operations and to lower industry costs;
- **Coastal Water Quality** with real-time observations of biological, chemical, environmental, and physical ocean conditions that help to ensure public health; and
- **Ocean Planning and Management** by providing user-friendly access to data from multiple sources for ocean management, climate change mitigation and adaptation, and supporting renewable energy development.

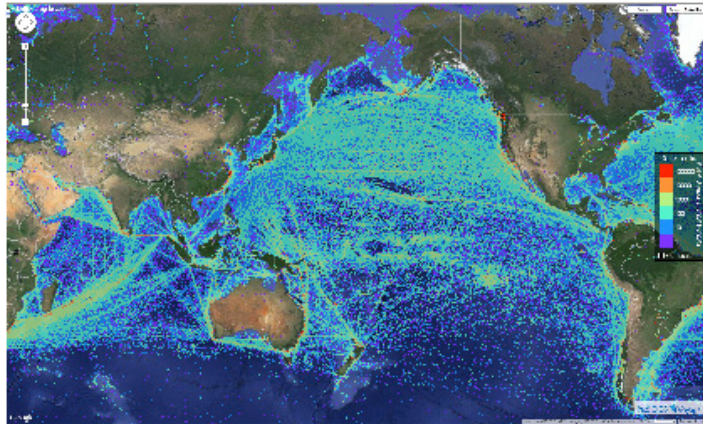


**PacIOOS** is the Pacific Islands regional component of the U.S. Integrated Ocean Observing System (IOOS®).

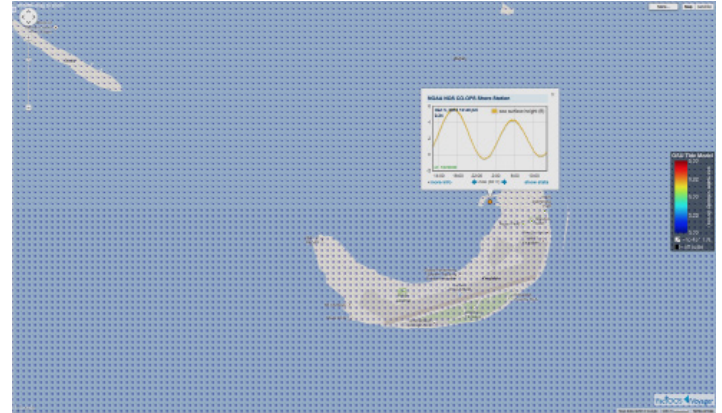
It is a partnership of data providers and users working together to enhance ocean observations and develop, disseminate, and evaluate ocean data and information products. These products are designed to address the environmental, economic, and public safety needs of individuals who call the Pacific Islands home.



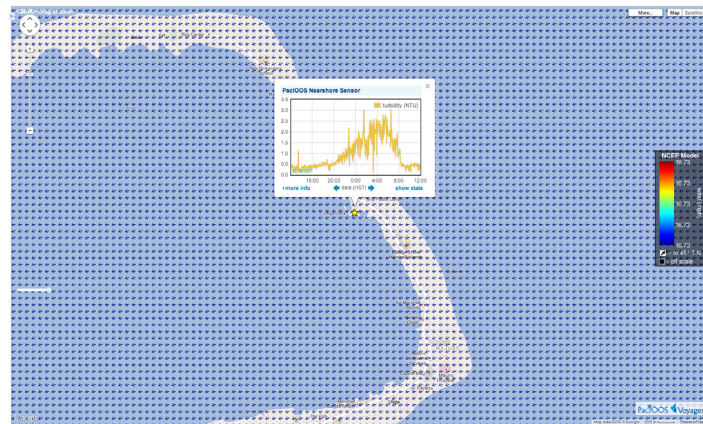
**PacIOOS Voyager** ([www.pacioos.org/voyager](http://www.pacioos.org/voyager)) is a dynamic data visualization tool for resource managers, planners, policy makers, ocean users, harbor users, and the general public. This free tool, which is hosted on a Google Maps platform, provides map overlays of real-time and near real-time data, regional model data, global satellite data, and more. Data are available online or on your mobile device!



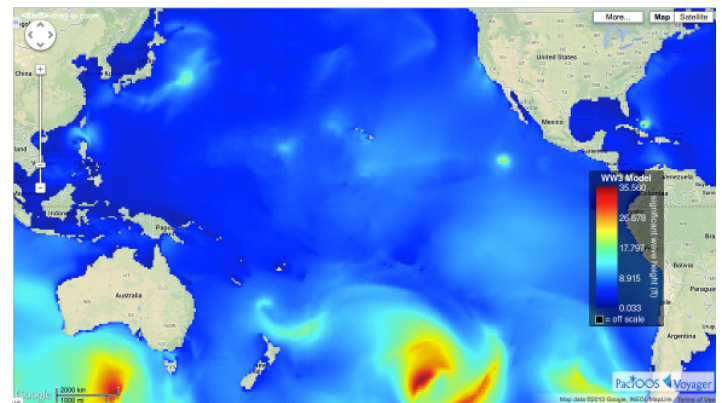
**Global Ship Traffic** is aggregated from August 2011 to mid-August 2012 at 10 km resolution and helps to aid in navigation.



**Water Level Stations and Tide Forecasts** in Kwajalein provide important information about harbor conditions, tides, tsunamis, sea level, and other ocean conditions.



**PacIOOS Nearshore Sensors and Wind Forecasts** in Majuro provide data on water temperature, conductivity, salinity, chlorophyll-a (fluorescence), turbidity (cloudiness), and wind speed.



**Global Surf Forecasts** for the Pacific Ocean are provided by NOAA Wave Watch 3, and give the public an idea of what to expect in the water.

**Marshall Islands Conditions at a Glance**

- Weather: PacIOOS Wires Buoys
- Waves: Wave Buoy in PacIOOS Voyager
- Tides: NOAA Tide Data Majuro, Marshall Islands
- Winds: NWS Wave Observations
- Currents: National Data Buoy Center
- Water Quality: Forecasts

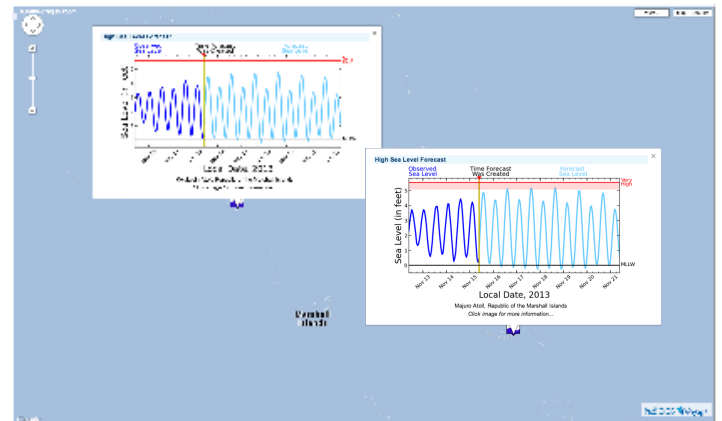
**Marshall Islands Wave Buoy**

Wave Height Legend

- 0.0 - 0.5
- 0.6 - 0.9
- 1.0 - 1.5
- 1.6 - 2.0
- 2.1 - 2.5
- Not Available

Wave: Model Forecast

NOV 24 2013 2:00 PM HST



**High Sea Level Forecasts** of Majuro and Kwajalein provide sea level height forecasts that are dependent on ocean currents and weather patterns.

**Regional Conditions** are offered on the PacIOOS home page for fast access of current oceanic and atmospheric conditions.

*For more information:*  
[oceans.of.data@gmail.com](mailto:oceans.of.data@gmail.com)

Heather Kerkering, Director: (808) 956-8784, [heather.kerkering@hawaii.edu](mailto:heather.kerkering@hawaii.edu)  
 Melissa Iwamoto, Outreach and Program Coordinator: (808) 956-6556, [melissa.iwamoto@hawaii.edu](mailto:melissa.iwamoto@hawaii.edu)  
 Don Hess, Member, PacIOOS Governing Council: (692) 625-5066, [cmihess@gmail.com](mailto:cmihess@gmail.com)  
 Karl Fellenius, RMI Liason: (692) 625-3392, [karl.fellenius@hawaii.edu](mailto:karl.fellenius@hawaii.edu)