



Fiji's Biodiversity  
My Identity  
My Responsibility

***Come and join us***



© Jörg Kreizshmar



Photo by W. Beckon

Nunia Thomas  
Director

Pacific Ecosystem-based Adaptation to Climate  
Change.

Project Inception Workshop

# Overview

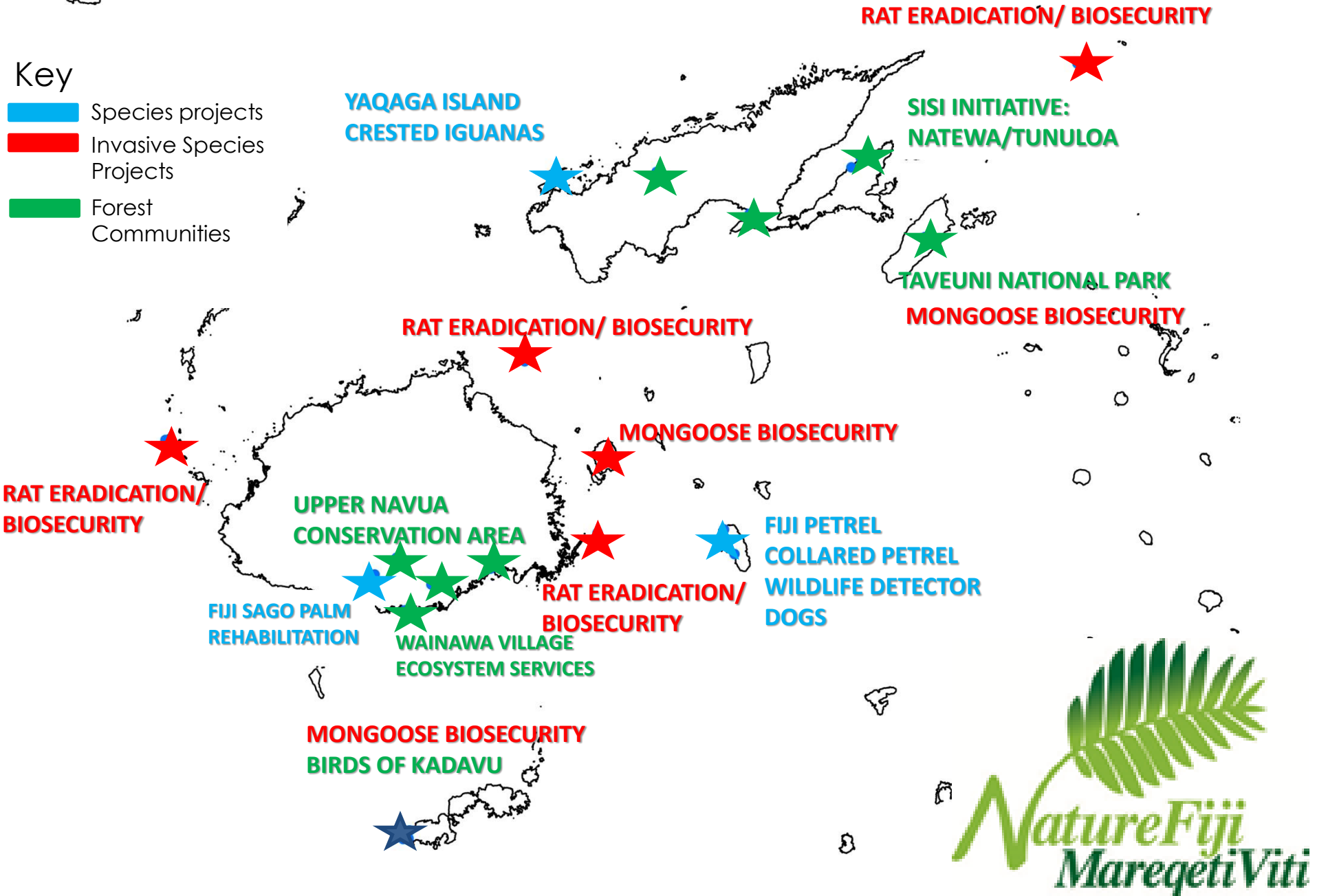
- Taveuni – Fiji’s conservation stronghold
- Taveuni Timeline
- Key results:
  - **2009:** Protected Areas Status and Awareness program
  - **2010:** Green Iguana Emergency Response Plan
  - **2012:** Taveuni National Park Consultation Project
  - **2014, 2015:** Ecosystem services assessment (TESSA), Sustainable Forest Management, Permanent Forest Estates.



# Delivering Conservation Action

## Key

-  Species projects
-  Invasive Species Projects
-  Forest Communities



# Taveuni Fiji's Conservation Stronghold



© Stuart Chape



© Stuart Chape



© Joanne Malotau

# Taveuni Fiji's Conservation Stronghold



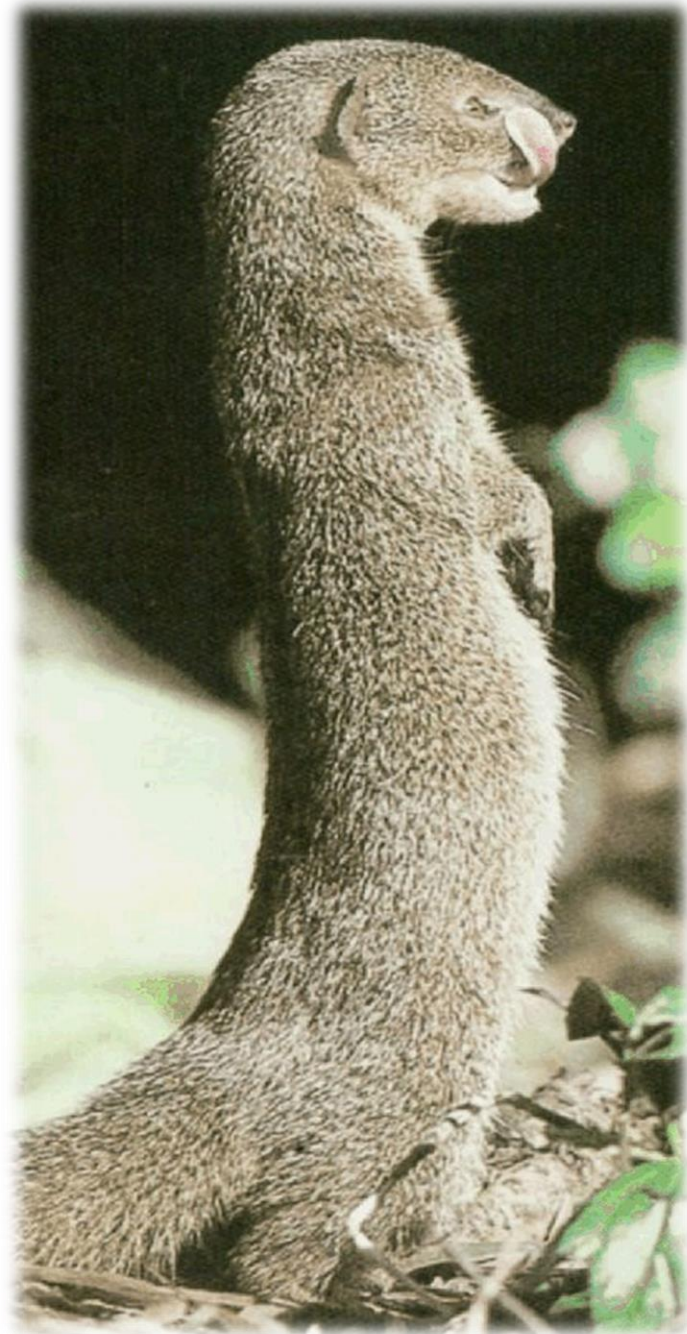
© Guy Bottroff



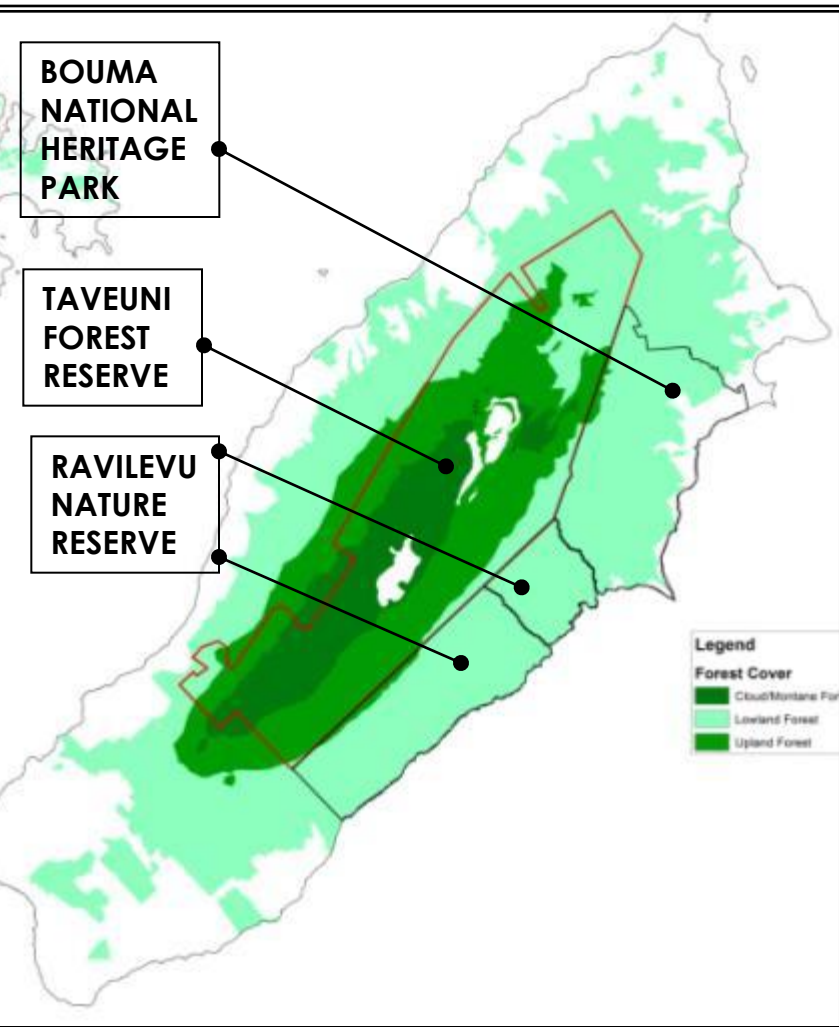
© Clare Morrison



© Dick Watling



# Taveuni – Protected Areas



- ❑ **1914** - Taveuni Forest Reserve
- ❑ **1959** - Ravilevu Nature Reserve
- ❑ **1980** – National Trust of Fiji (RNR + TNR)
- ❑ **1988** – Dept. Forests (RNR + TFR)
- ❑ **1991** - Bouma National Heritage Park
- ❑ **1992** – State of the Env. Report; National Env. Strategy for RNR + TFR as national priority PA
- ❑ **1992** - Dereservation of parts of TFR with agric. encroachment
- ❑ **1993** – Integrated Development Plan for Taveuni
- ❑ **1999** - NBSAP (2003 – Cabinet)
- ❑ **2005** – Logging, agricultural encroachment
- ❑ **2006** – TFR, RNR Management Plan
- ❑ **2006** – World Heritage Site report
- ❑ **2009** – Awareness campaign with all stakeholders on Taveuni’s conservation value
- ❑ **2012** – Taveuni National Park Project
- ❑ **2013 – 2015** – Ecosystem Services, Sustainable Forest Management, Permanent Forest Estates

# Taveuni 2009 - 2015



- **2009** – National Protected Areas Committee – Awareness campaign and assessment of the status of the Protected Areas on Taveuni
- **2010 – 2012** – Emergency response to the Introduced Green Iguana
- **2011 – 2012** – Taveuni National Park Community Consultations
- **2012 – 2015:**
  - *Community based Invasive Species Incursion Response Plans*
  - **Toolkit for Ecosystem Service Site-Based Assessment (TESSA)**
  - **Sustainable Forest Management and Permanent Forest Estates:** Community Socio-economic surveys, and identification of livelihood-focused intervention.



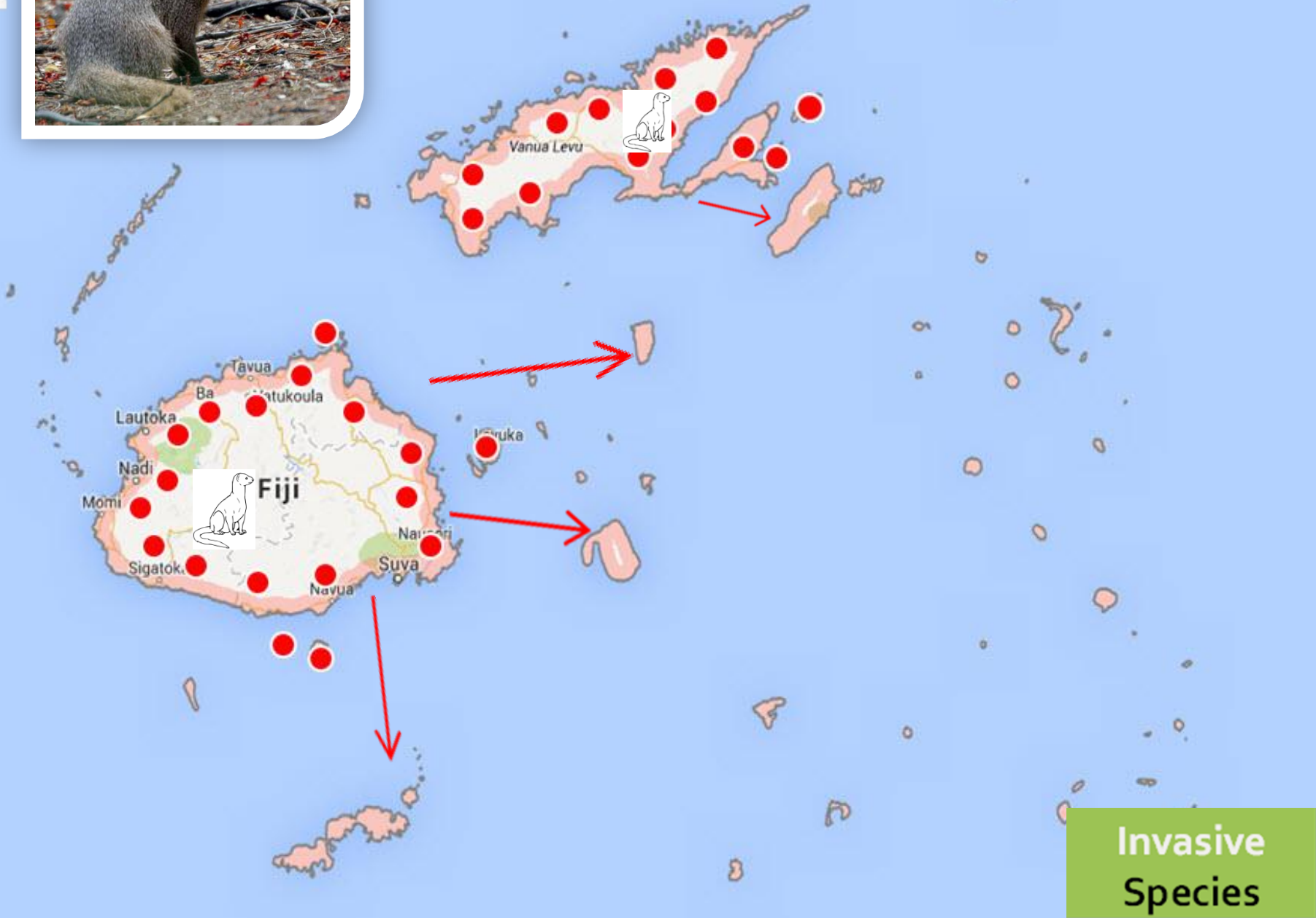
# Combating Invasive Alien Species in Fiji 2012 - 2015



Invasive  
Species



# Preventing the spread of the Indian mongoose to high biodiversity islands in Fiji



# Control and eradication of the GII in Qamea and Laucala



**PEST ALERT**

Be on the lookout for the AMERICAN IGUANA as it will CAUSE GREAT HARM to FIJI. If the Iguana is found in your possession, you WILL be charged a maximum fine of \$50,000 or face a possible prison term of 19 months.



Report sightings or any information about the American Iguana to:

Biosecurity Authority of Fiji (Ph: 3302 512) or NatureFiji - Marenqetivi (Ph: 3100 598 / 3632 105)

**HELP STOP THIS PEST FROM SPREADING!**

Biosecurity Authority of Fiji, BirdLife International, European Union

**Invasive Species**

# Outputs - Mongoose

Report on the Taveuni Mongoose Incursion response workshop and training



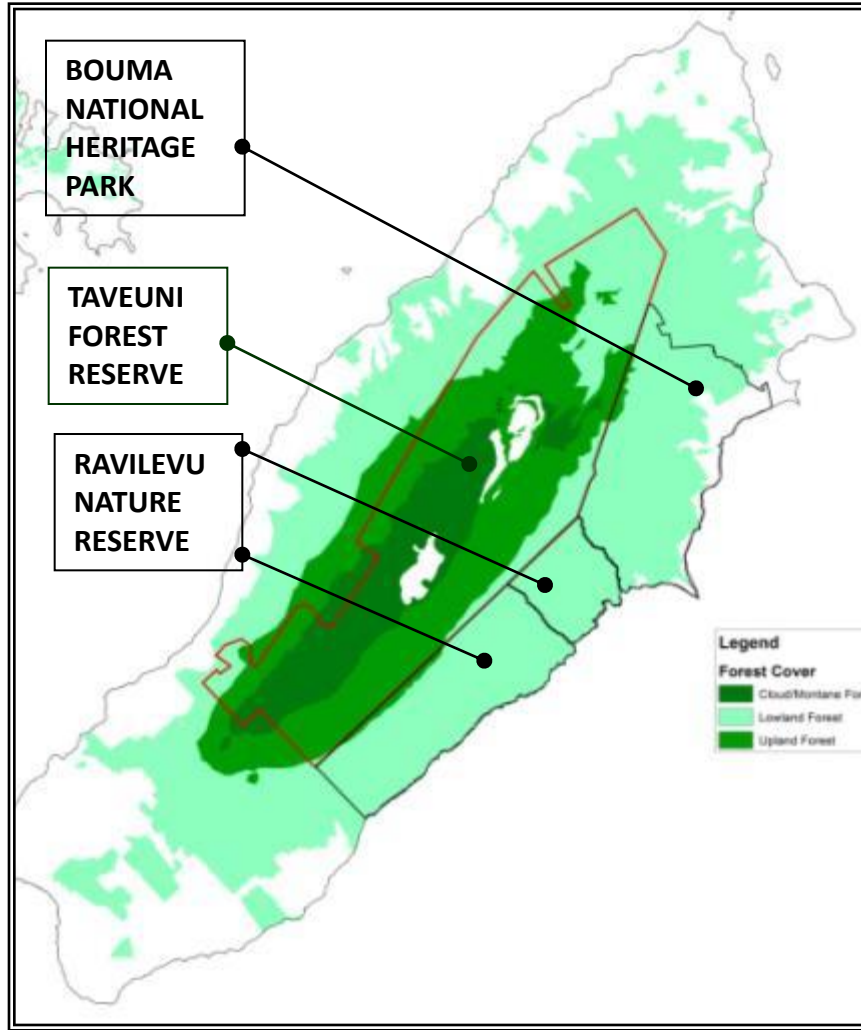
SOMOSOMO, TAVEUNI  
29TH APRIL 2015



- Mongoose Incursion Response Workshop (2014)
- Mongoose Incursion Response Plan (Taveuni, 2015)
- Ovalau survey report

## ***Recommendations***

- Quick response task force
- Mongoose billboards at boat landings
- Awareness materials
- Trapping surveys at least once a year
- Toll-free number
- Provincial Offices



# TAVEUNI NATIONAL PARK Consultation PROJECT

*Noda Iyaubula  
Noda Bula Sautu*



Cakaudrove  
Provincial  
Office

# Key Outcomes

- Confirmed:
  - Support from Taveuni Forest Reserve mataqali (70%);
- Queries:
  - What are the plans of the other stakeholders for Taveuni?
    - *NPAC; TLTB, Ministry of Lands, Mins. Agriculture, Mins. Tourism, Dept. Culture and Heritage, FLMMA*
  - What is Dept. Forests' plan for the Taveuni FR?
  - How is the Taveuni FR benefitting the Dept. Forests? Or is it an added burden that needs to be re-looked at?
  - Is the current lease arrangement enough to ensure continued integrity of the Taveuni FR boundary?
- Current threats to be addressed immediately:
  - Integrity of the Taveuni Forest Reserve and Ravilevu Nature Reserve boundary;
  - Identify encroachment areas;
  - Redefinition of boundary at encroached areas?
  - Re-afforest encroached areas? *Native species or timber species?*
  - ***How do we address the threats to the integrity of Taveuni's protected areas?***



# Delivering sustainable forest management for Fiji's people and wildlife

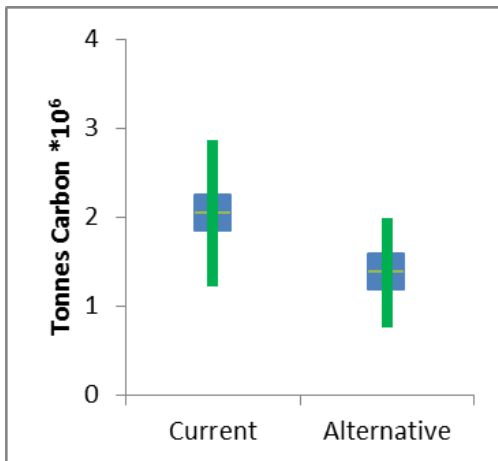


AAGE V. JENSEN CHARITY FOUNDATION

# Taveuni Carbon Stock and Firewood.

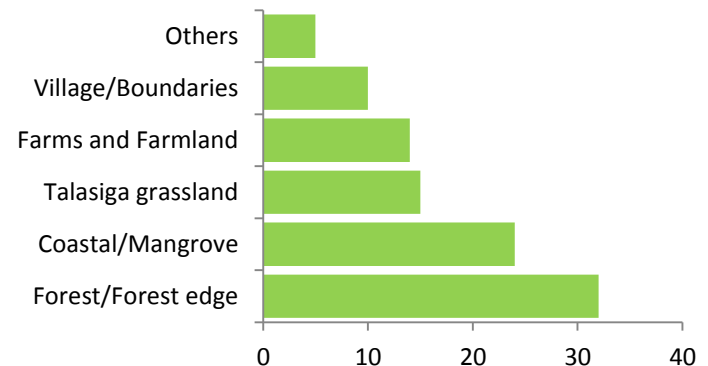
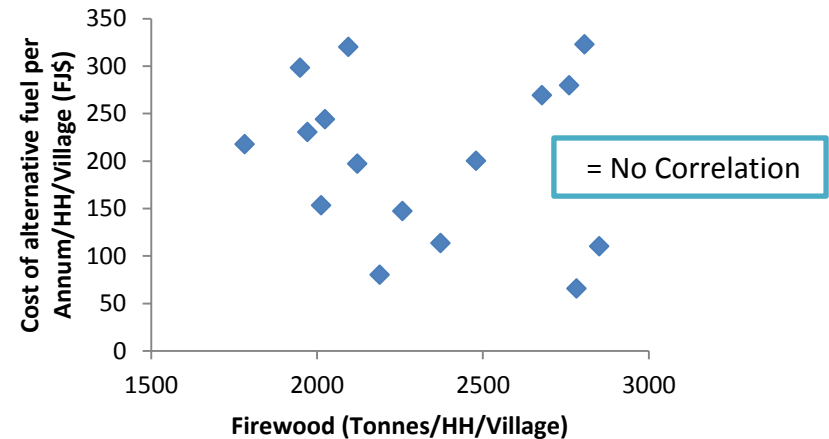
Comparing Landuse and Carbon stock at Bouma National Heritage Park with an alternative, based on mean landuse across the rest of Taveuni.

	Bouma NHP		Taveuni	
	Area (Ha)	%	Area (Ha)	%
Forest	5,200	87	3,030	51
Agriculture	650	11	2,650	44
Coconut	130	2	300	5
Urban	20	0	20	0



- Carbon content in Alternative state is just 67% of Current state in NHP.
- Carbon Data based on estimates from Natewa/Tunuloa, which are comparable with IPC means.
- Confidence Intervals could be improved by using Taveuni-specific information.

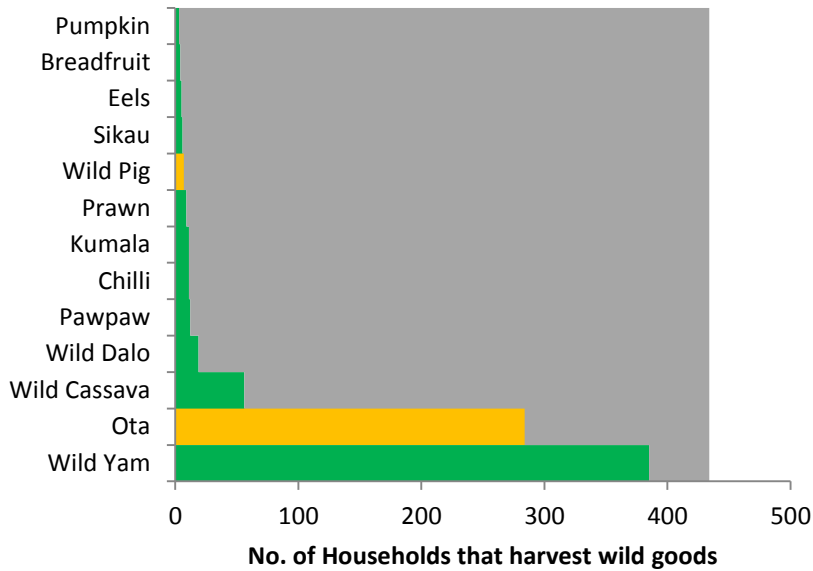
Mass of Firewood collected compared with other fuel use in villages in Taveuni (429 households, 16 villages).





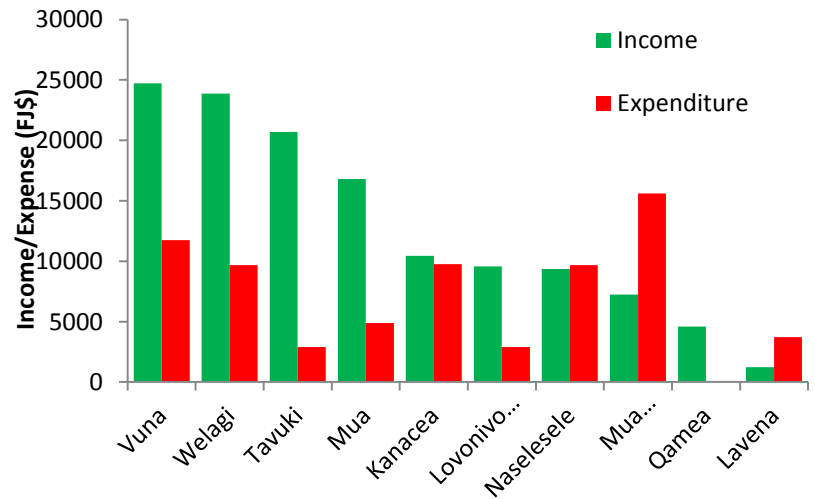
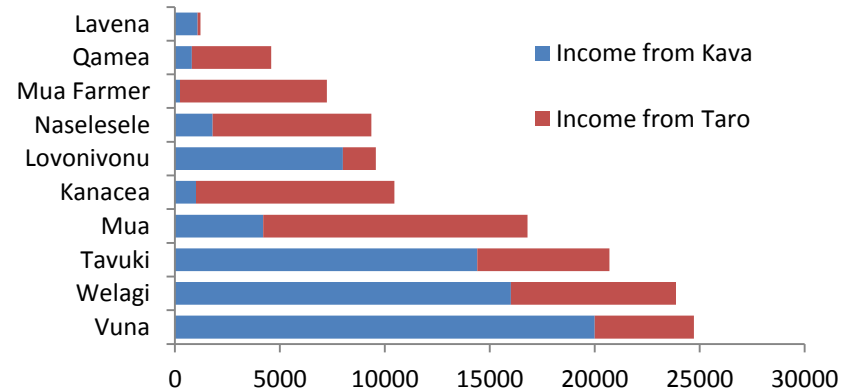
# Taveuni Harvested Goods

**Harvested Wild Goods on Taveuni (Gold represents goods harvested from forest areas. (435 households in 16 villages).**



- Ota and Wild Yam are only wild crops regularly harvested.
- Only 9% and 2% Wild Yam and Ota sold respectively, the rest for home consumption.
- Little produce from forest – most from elsewhere.

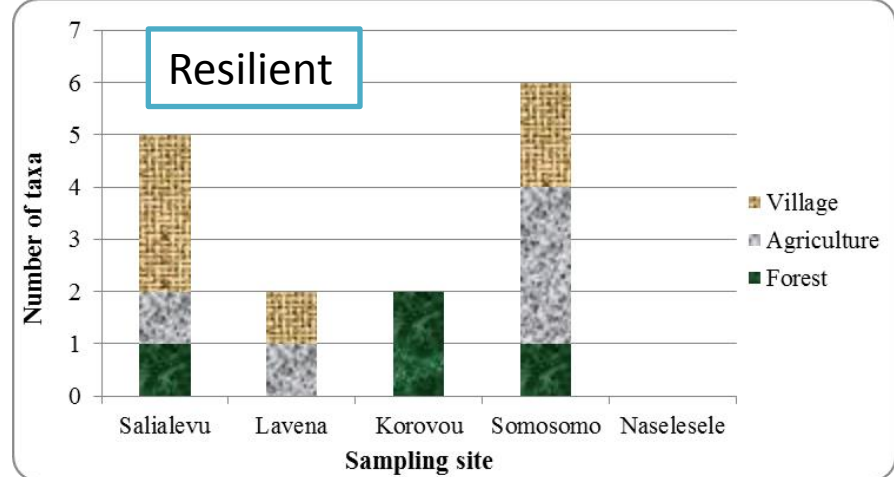
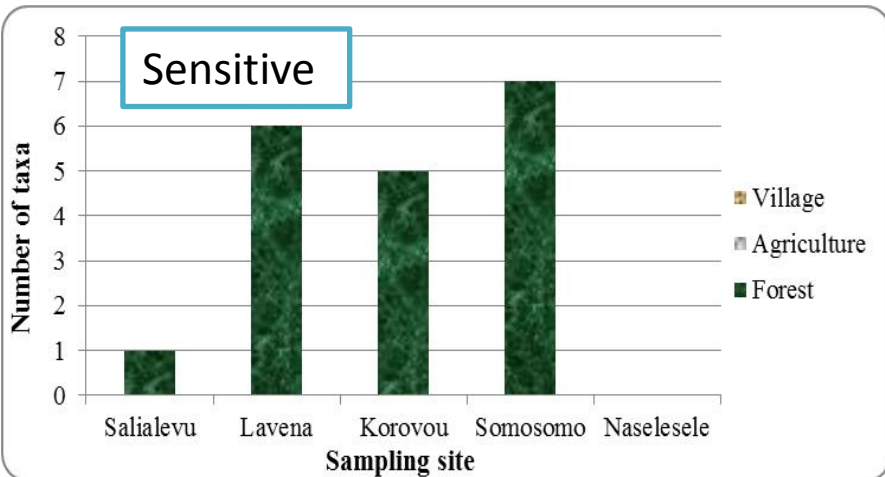
**Commercial crops – main types, and income v expenditure.**



# Freshwater Bio-Indicators on Taveuni.

Taxa	Common name	Sensitive	Resilient
Baetis sp.	mayfly	✓	
Chimarra sp.	finger-net caddisfly	✓	
Apsilochorema sp.	free living caddisfly	✓	
Paroxyethira sp.	micro-caddis		✓
Chironomus sp.	Midge		✓
Limonia sp.	cranefly		✓
Nesobasis spp.	damselfly	✓	
Nesobasis sp. b	damselfly		✓
Unknown	damselfly	✓	
Corduliidae sp. a	dragonfly	✓	
Fluviopupa spp.	spring snail	✓	

- Sensitive Bio-Indicators only occurred in streams with Forest catchment
- Resilient Bio-Indicators occurred in streams in all catchments.
- **Water catchment issue**



# Lessons learnt

- Taveuni's biodiversity and protected areas are still under threat;
- Unrealised value of Taveuni's Forests and biodiversity
- Eco-tourism potential remains largely untapped;
- Interventions:
  - Livelihood focused
  - Education
  - Government policies
- Steering Committee (multi-stakeholder) for a holistic approach – who is to chair/ lead?



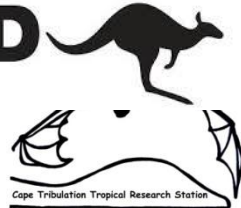
# ACKNOWLEDGEMENTS



AAGE V. JENSEN CHARITY FOUNDATION



British High Commission  
Suva, Fiji



Department for Environment  
Food and Rural Affairs



Ministry of Indigenous Affairs

Department of iTaukei  
Language and Culture

PREVENTING EXTINCTIONS