

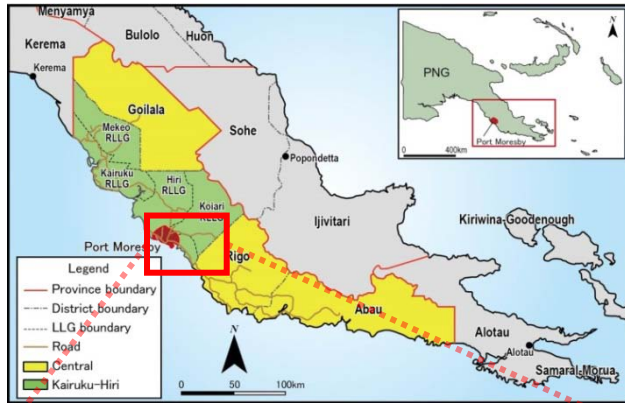
Background

PNG is one of the richest biodiversity countries in the world, while among the total population of 7.3 million in PNG, over 80% of them are in rural areas and still directly dependent on the natural environment with the rich biodiversity for their subsistence and livelihoods.

To address biodiversity conservation and support the development and management of a National Protected Area Network in PNG, the government of PNG launched the PNG Policy on the Protected Areas (PPA) in 2014. PPA guides communities, organizations and agencies to harmonize their efforts in a structured and logical approach to the development and management of Protected Areas (PA). The Project aims to support the implementation of PPA.

Project Target Areas

Project target areas include Central Province and several target PAs. The target PA for Output 2 is Varirata NP as terrestrial PA management model, and Koiari Rural LLG is the target LLG for livelihood development activities. Besides, Output 3 considers Motupore Island to be one of the candidates for marine/coastal PA establishment.



Technical Cooperation CEPA - JICA Biodiversity Project 2015-2020

The Project for Biodiversity Conservation through Implementation of the PNG Policy on Protected Areas



Conservation and Environment Protection
Authority (CEPA)

Japan International Cooperation Agency
(JICA)

Address: P.O.Box 6601, Boroko, National
Capital District, Papua New Guinea

Phone: (+675) 301-4500

Fax: (+675) 325-0182

JICA Project Homepage:

[http://www.jica.go.jp/png/english/activities/
activity18.html](http://www.jica.go.jp/png/english/activities/activity18.html)

Basic Information of the Project

Project Period: Five (5) years commencing from June 2015

Implementing Agency: Conservation and Environment Protection
Authority (CEPA)
Japan International Cooperation Agency
(JICA)

Targets: Provincial administration(s), district
administration(s) and LLG government(s)
surrounding the target Protected Areas

Target Protected Areas: Terrestrial – Varirata National Park
Marine/Coastal – to be defined

Outline of the Project

Project Purpose

Institutional capacity of CEPA for protected area (PA) management is strengthened through enhancing national-level PA governance and sustainable use of natural resources with local communities in the model Protected Areas as per the provision of the Policy on Protected Areas.

Overall Goal

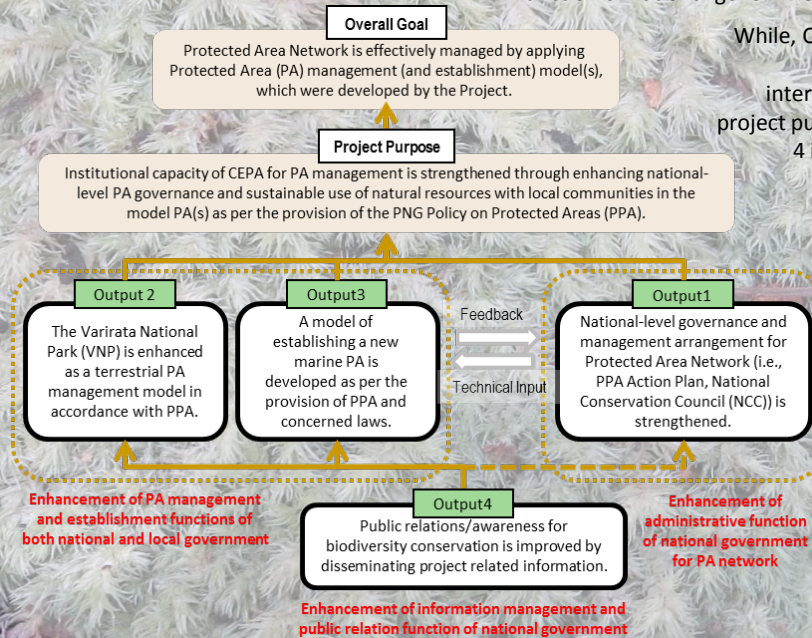
Protected Area Network is effectively managed by applying Protected Area management (and establishment) model(s), which were developed by the Project.

Outputs

- National-level governance and management arrangement for Protected Area Network (i.e., PPA Action Plan, National Conservation Council (NCC)) is strengthened.**
- The Varirata National Park (VNP) is enhanced as a terrestrial PA management model in accordance with PPA.**
- A model of establishing a new marine PA is developed as per the provision of PPA and concerned laws.**
- Public relations/awareness for biodiversity conservation is improved by disseminating project related information.**

Project Design

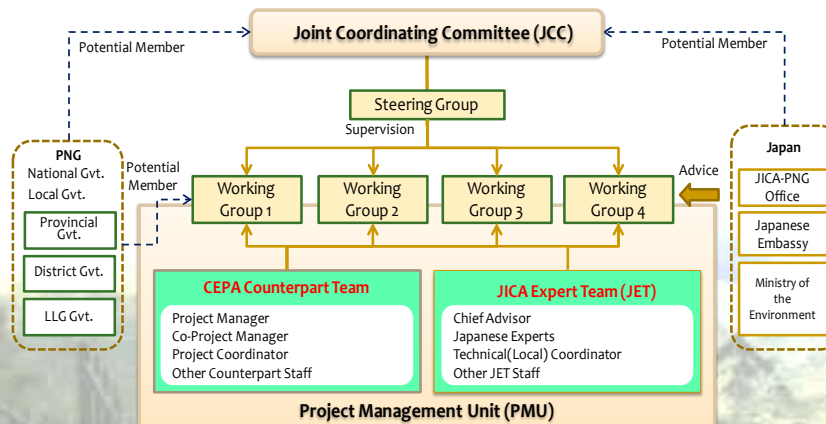
The project design can be interpreted to have three distinctive tasks; 1) enhancement of administrative function of national government for PA network (Output 1), 2) enhancement of PA management and establishment functions of both national and local governments (Output 2 & 3) and 3) enhancement of information dissemination and public relation function of national government (Output 4).



While, Output 1, 2 & 3 are in parallel interrelation to the project purpose, Output 4 is a supporting component for other Outputs.

Project Implementation Body

CEPA Counterpart Team and JICA Expert Team (JET) form the Project Management Unit (PMU) to be a project implementation body. Besides, Working Groups (WGs) are formed in specific task or/and output wise. The members of WGs are nominated from not only CEPA and JICA, but concerned institutions of national, provincial and local levels, universities, research institutions, NGOs and so on.



Project Coordination Body

The Joint Coordinating Committee (JCC) facilitates inter-organizational coordination of the Project. JCC meeting is agreed to be held at least once annually and whenever deems necessary. JCC will approve the Work Plan, review overall project progress, undertake monitoring and evaluation of the Project and exchange opinions on major issues that arise during the implementation of the Project.

Members of JCC		
1	Chairperson	Managing Director of CEPA (Project Director)
2	Co-chairperson	Chief Representative, JICA PNG Office
3		Director for Sustainable Environment Program, CEPA (Project Manager)
4		Director for Policy Coordination and Evaluation, CEPA (Co-Project Manager)
5		Representative from Department of National Planning and Monitoring
6		Representative from Central Province Administration
7	Member	Representative from Kairuku-Hiri District Administration
8		Representative from Koiari Local-level Government
9		Representative of JICA PNG Office
10		JICA Expert(s) of the Project
11		Other officials mutually agreed upon