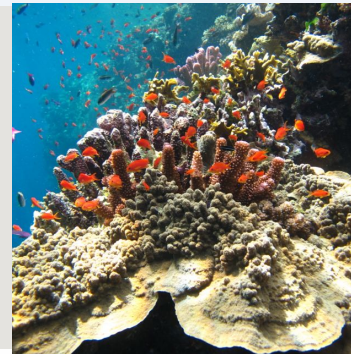
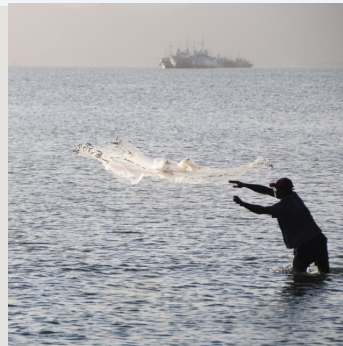




Marine and Coastal Biodiversity Management in Pacific Island Countries

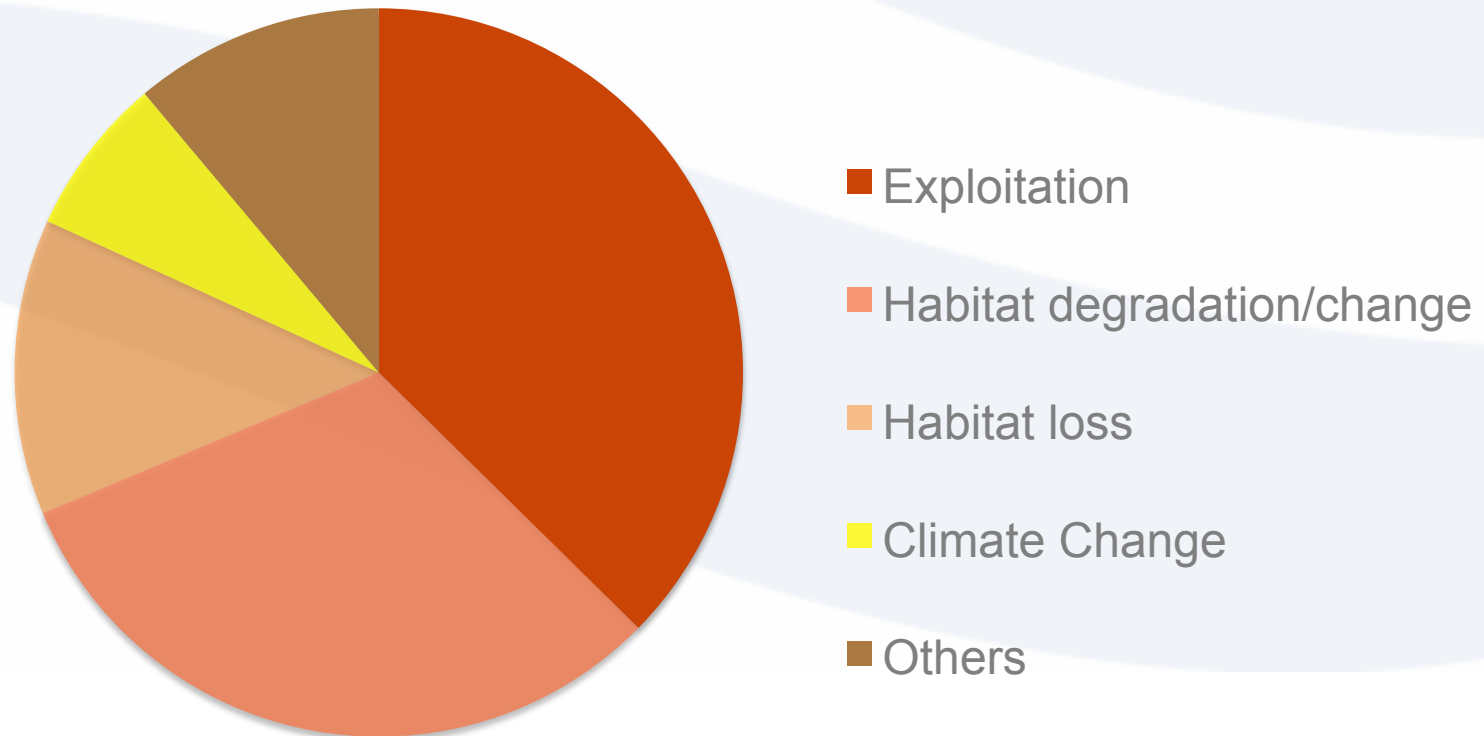


On behalf of:



of the Federal Republic of Germany

Global Causes For Wildlife Decline

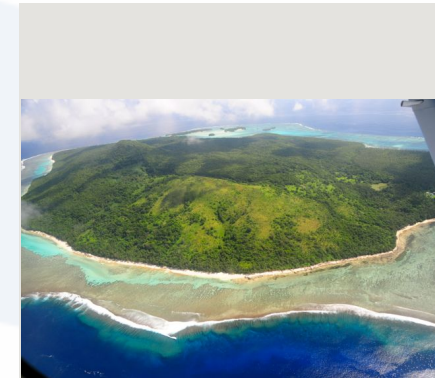


WWF - Living Planet Index

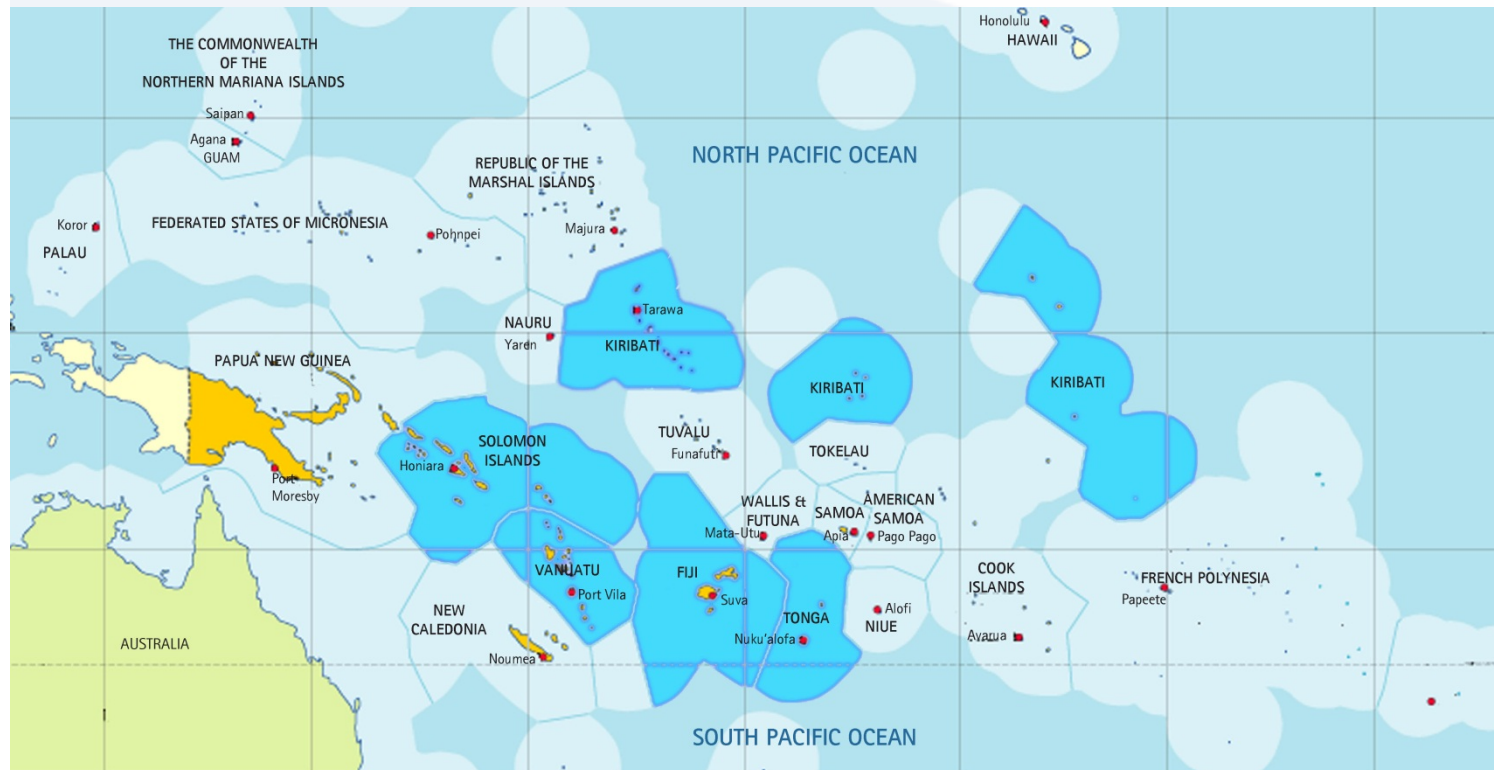
MACBIO Objective

Increased capacity to manage and conserve marine and coastal biodiversity in five Pacific Island Countries:

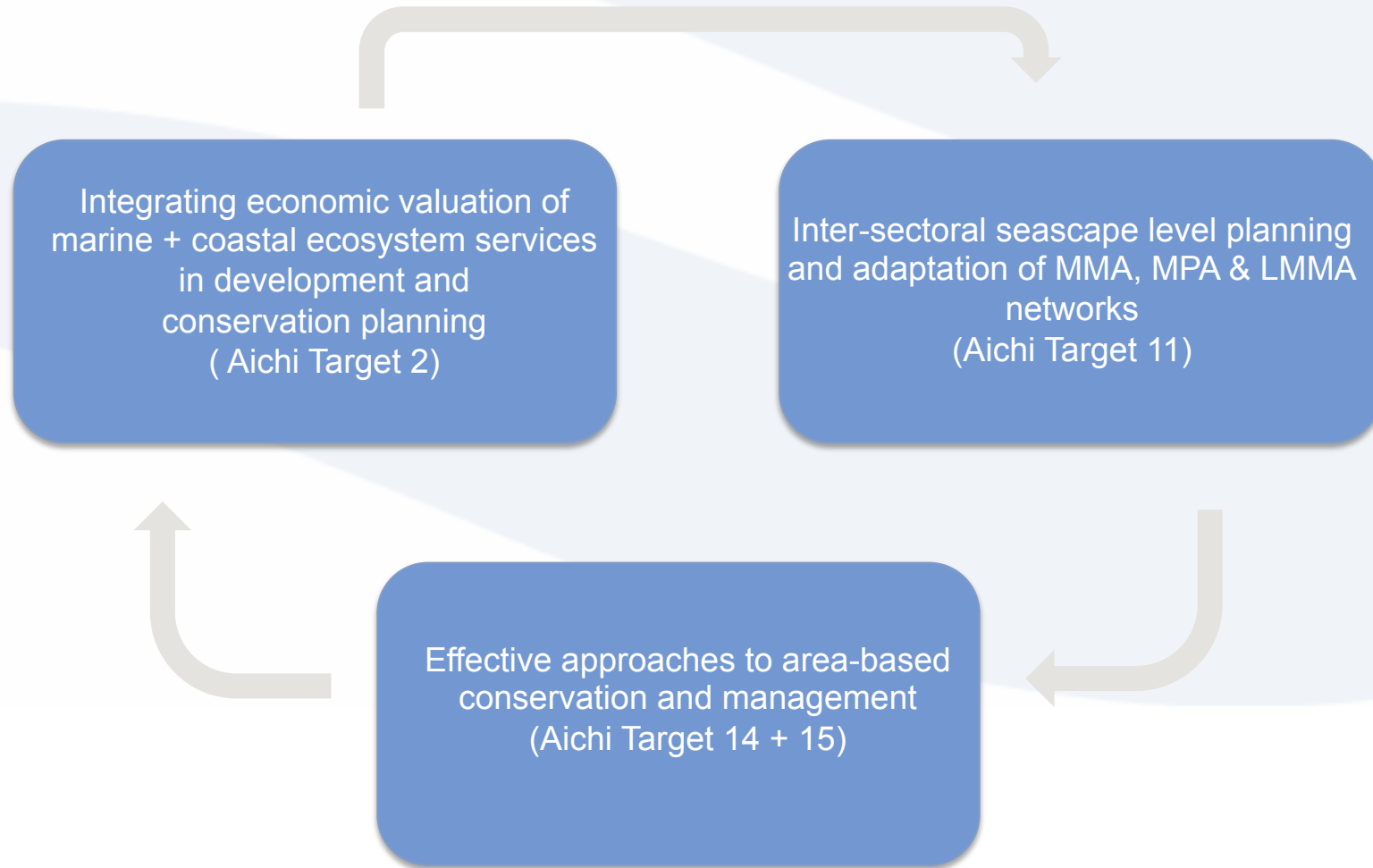
Fiji, Kiribati, Solomon Islands, Tonga, Vanuatu

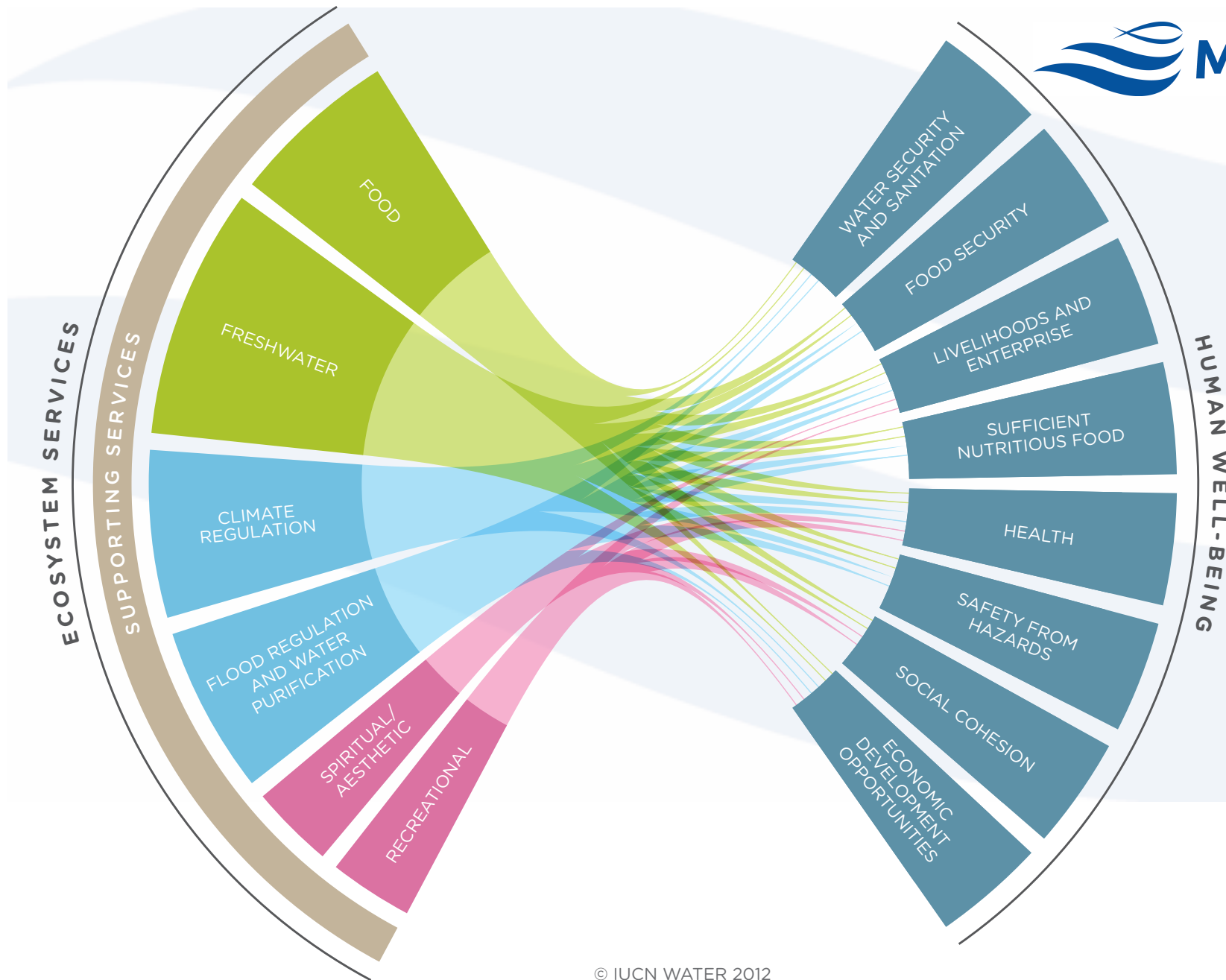


06/2013 – 05/2018



Approach





Marine Ecosystem Services: Fiji

The national value marine environmental services was almost **\$3.5b** in 2014.

Over **50%** of our population is coastal



Coral reefs and mangroves provide more than

\$21.2m

in coastal protection value



MANGROVE are being lost at

1-3%yr

By 2050 we may LOSE

\$213m

in ECOSYSTEM SERVICES

Subsistence Fishing is worth

\$59m

per year to local communities



UNSUSTAINABLE FISHING THREATENS FISHERIES VALUES

Losing CORAL REEFS at

>2%yr

By 2050 we may LOSE

\$2.4b

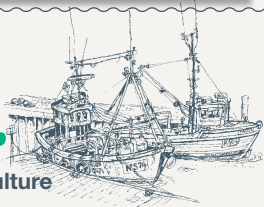
in ECOSYSTEM SERVICES



More than

\$128m

in GDP is from fishing and aquaculture



Artisanal commercial fishing provides

upto \$54m

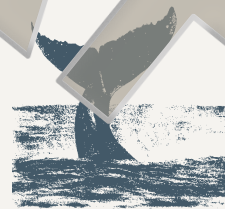
per year to coastal communities



The net value of Fiji's tuna is

\$20m

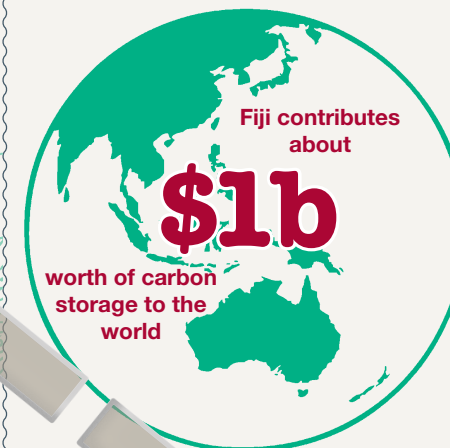
per year



Marine tourism brings in

\$1.15b

in revenue annually

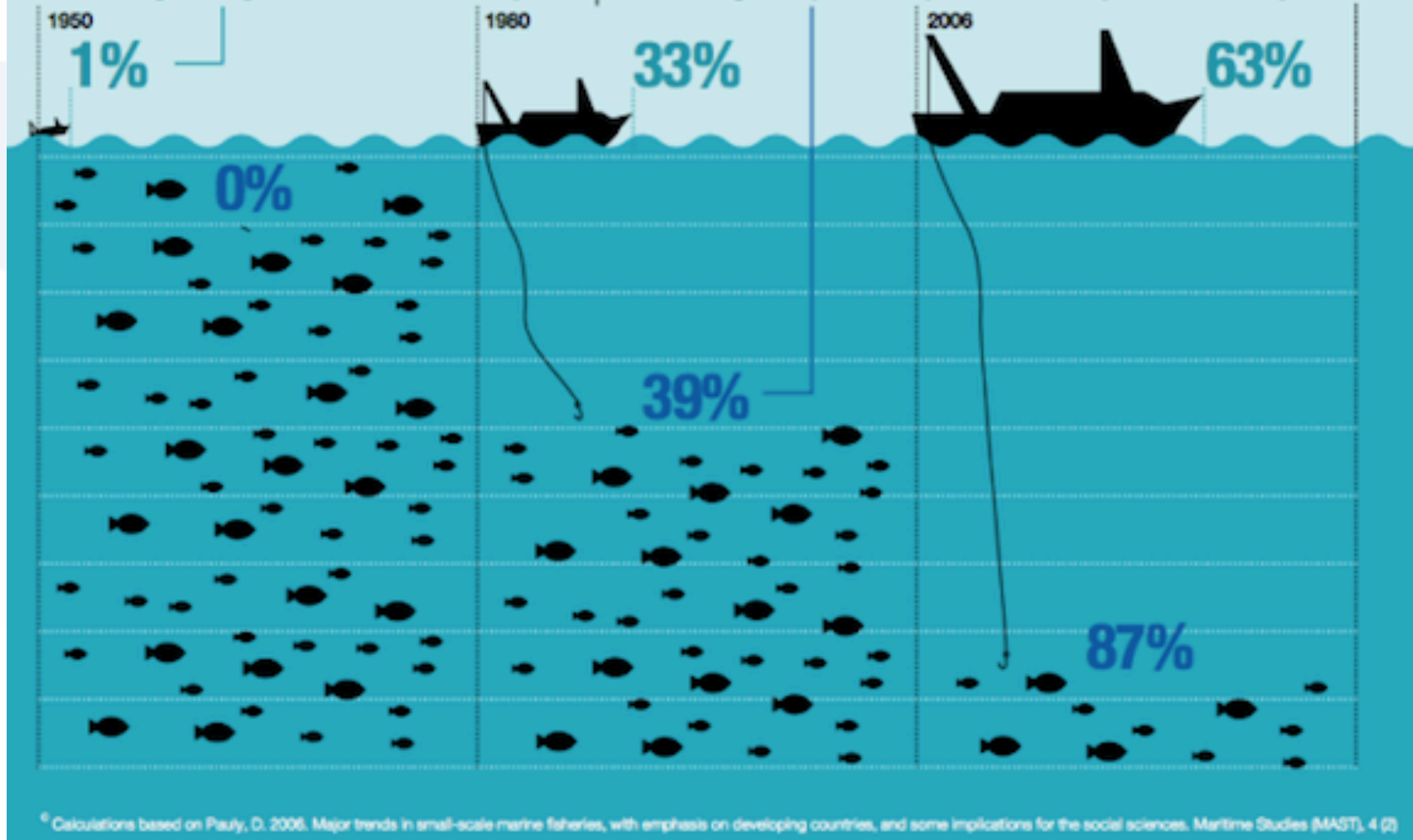


Sources

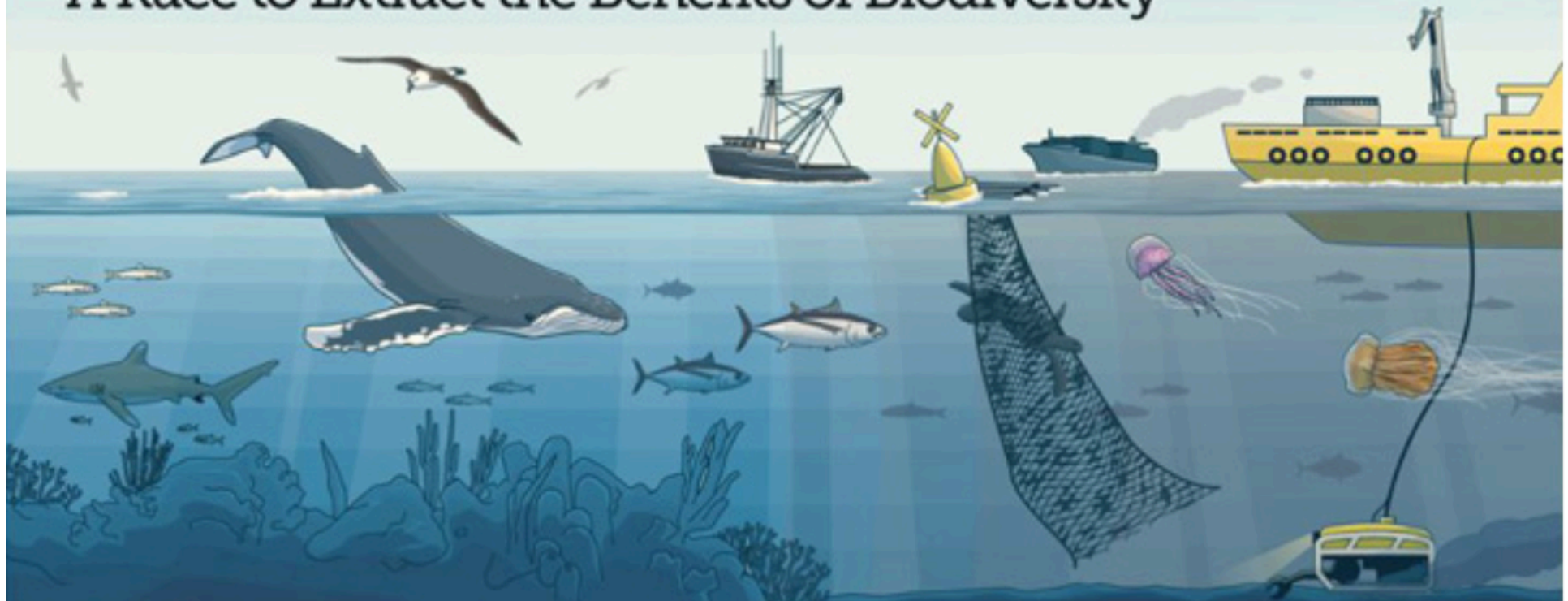
There are fewer fish in the sea than ever before

Percentage of high seas fished in each year

Percentage of species exploited, overexploited or collapsed

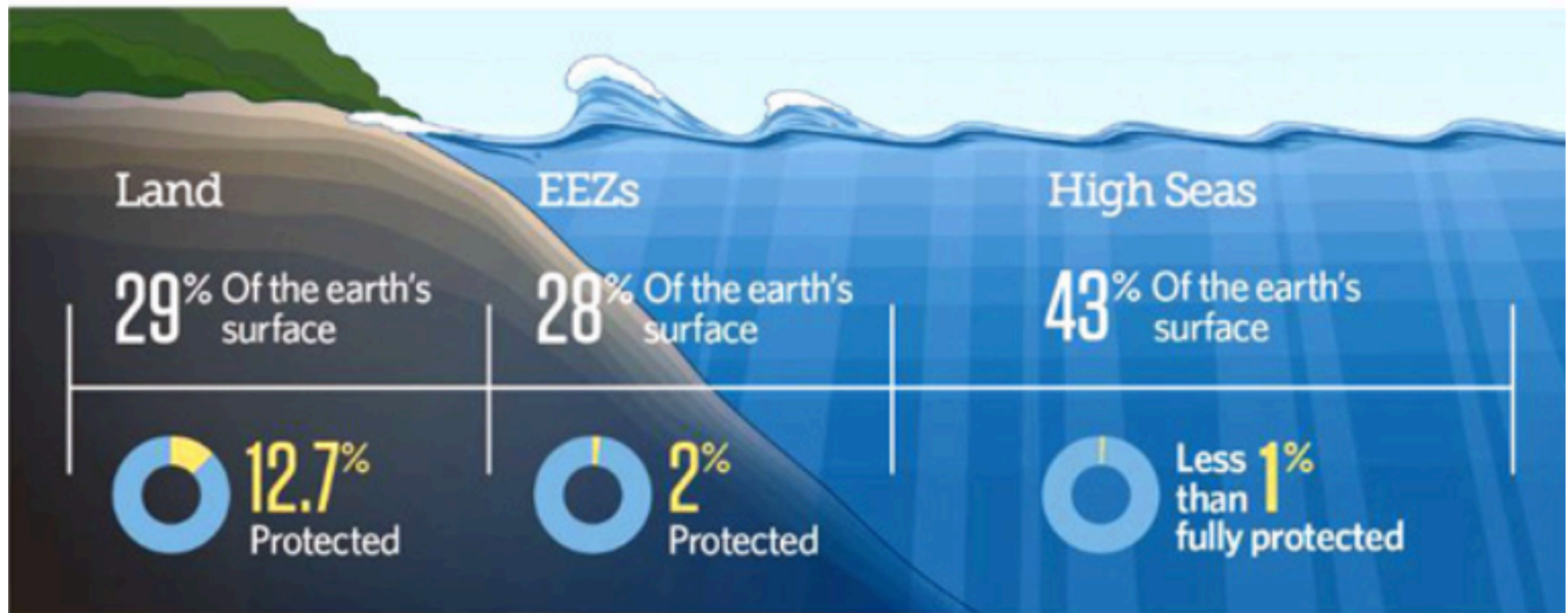


A Race to Extract the Benefits of Biodiversity

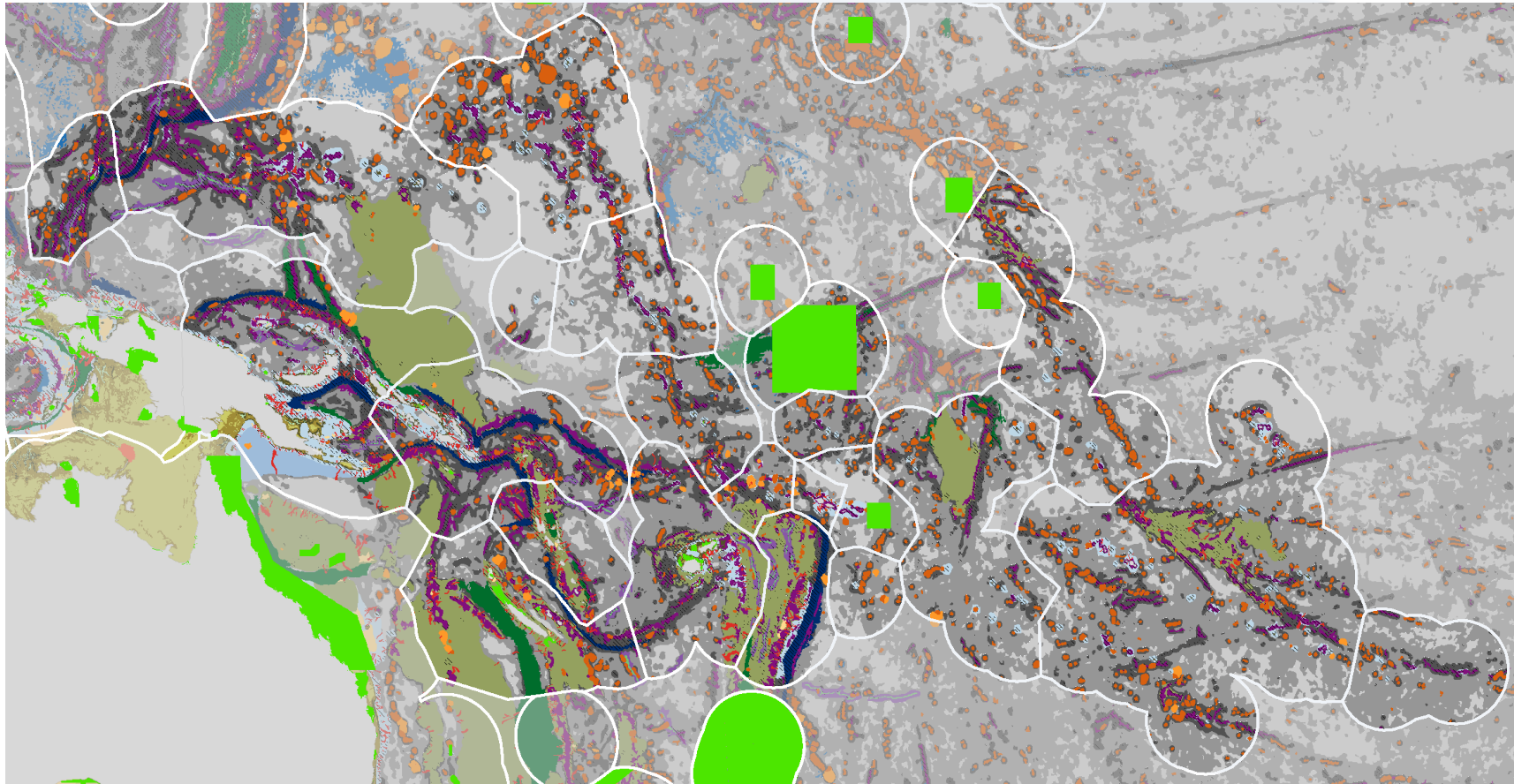


The high seas provide countless benefits and are home to some of the ocean's most interesting and valuable species.

Human activities—including pollution, overfishing, mining, geoengineering, and climate change—have negative impacts.



MPAs: Pacific Islands Region



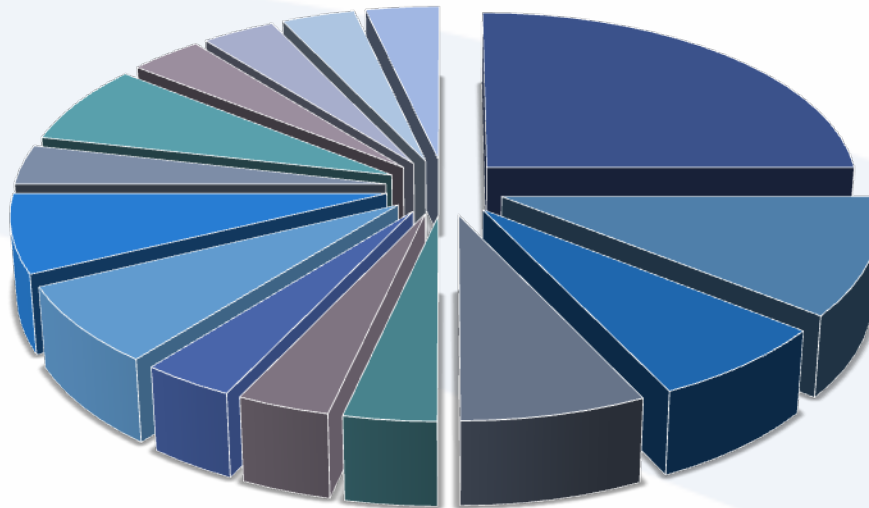
- | | | | |
|------------------------|------------|-----------------|---------|
| Shelf - high profile | Hadal | shelf valley | rise |
| Shelf - medium profile | canyon | rift valley | terrace |
| Shelf - low profile | guyot | glacial trough | trench |
| Slope | seamount | trough | plateau |
| Abyss - mountains | bridge | ridge | |
| Abyss - hills | sill | spreading ridge | |
| Abyss - plains | escarpment | fan/apron | |

Kiribati Marine Protected/Managed Areas in National Policies



Forms of Marine Managed Areas

* Pie chart proportions indicate number of policies that refer to those “MMAs”.



- MPA (scaling up, increase number)
- Community based Protected Area
- Closed Area
- Marine Reserve
- Conservation Area/Seasonal Area
- Ocean Management Area
- Marine Park
- CBFM (to establish 3 pilot sites)
- Community Conservation Area
- Marine Sanctuaries
- Moratorium
- No take Areas (To increase size of no-take area from 3% to 25% of EEZ)
- Restricted Fishing Area
- Special Fishing Vessel Exclusive Zone
- EEZ Ocean Buffer Zone

• Several terms are being used inter-changeably with literally same definition such as Marine Reserve, Conservation Areas, Marine Parks and Marine Protected Areas. Some form of managed areas are very specific to activities such as nature of fishing, type of vessels, space, etc. There are also similar type of community based managed areas such as Community Conservation Areas, Community Based Protected Areas, Community Based Fisheries Management, etc.

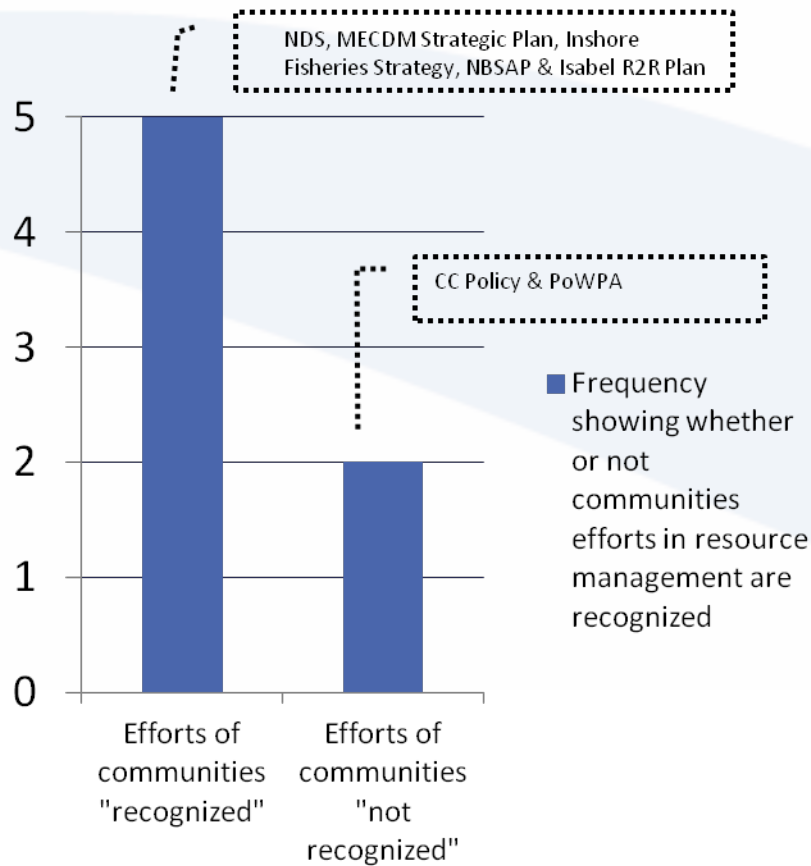
• Documents which sets the general targets are, KDP, KIEP, KNFP, PIPA Mgt Plan and NBSAP.



Community Participation



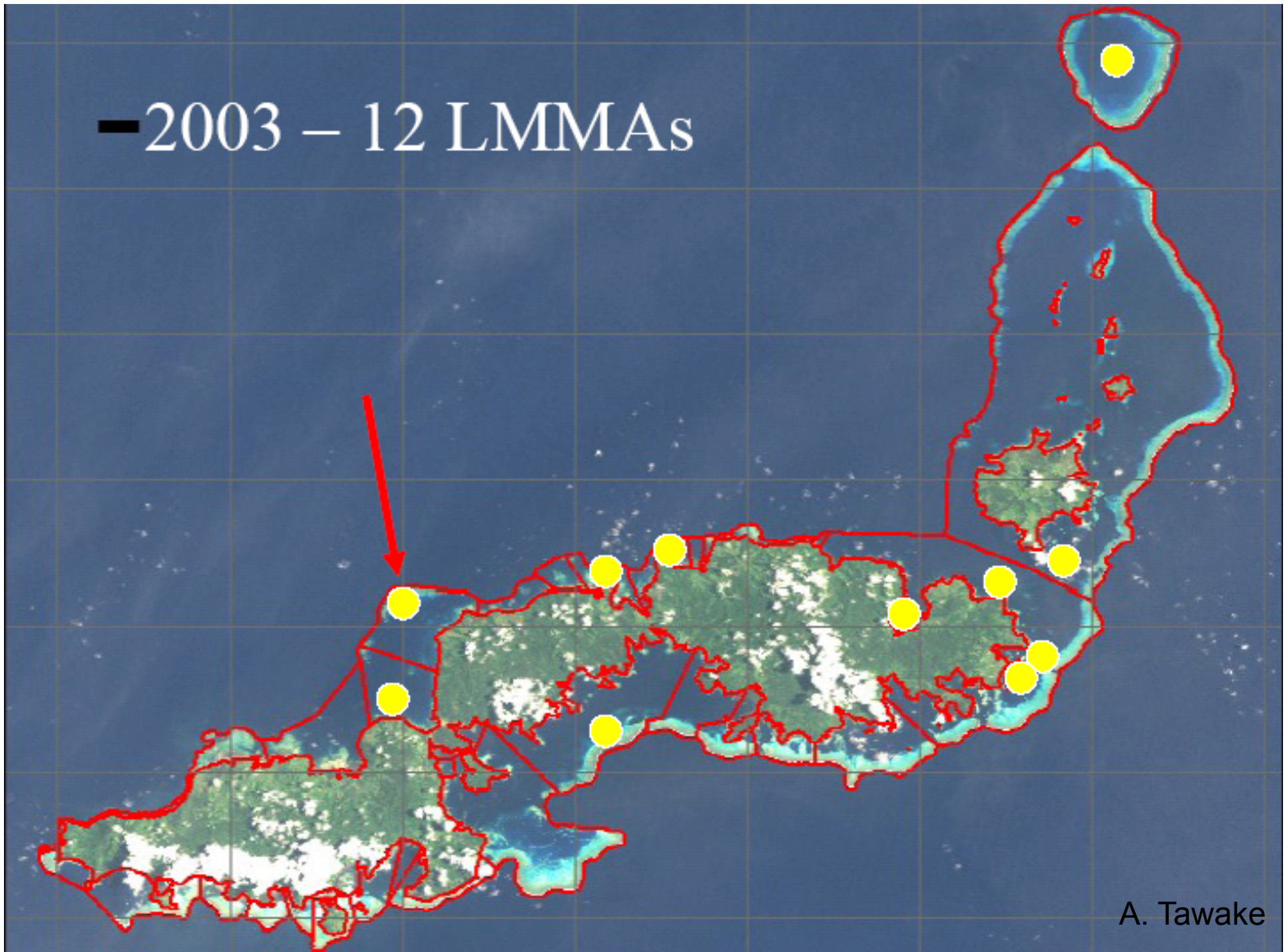
Frequency showing whether or not communities efforts in resource management are recognized in Policy Documents



	Already implemented, Cooperative	Planned for future, Cooperative	Already implemented, Community driven	Planned for future, Community driven
CBRM		✓	✓	
LMMA	✓			
Tabu Area		✓	✓	
NGO-community partnership		✓		
Private-sector community partnership		✓		
Tourism-community partnership				
PES				



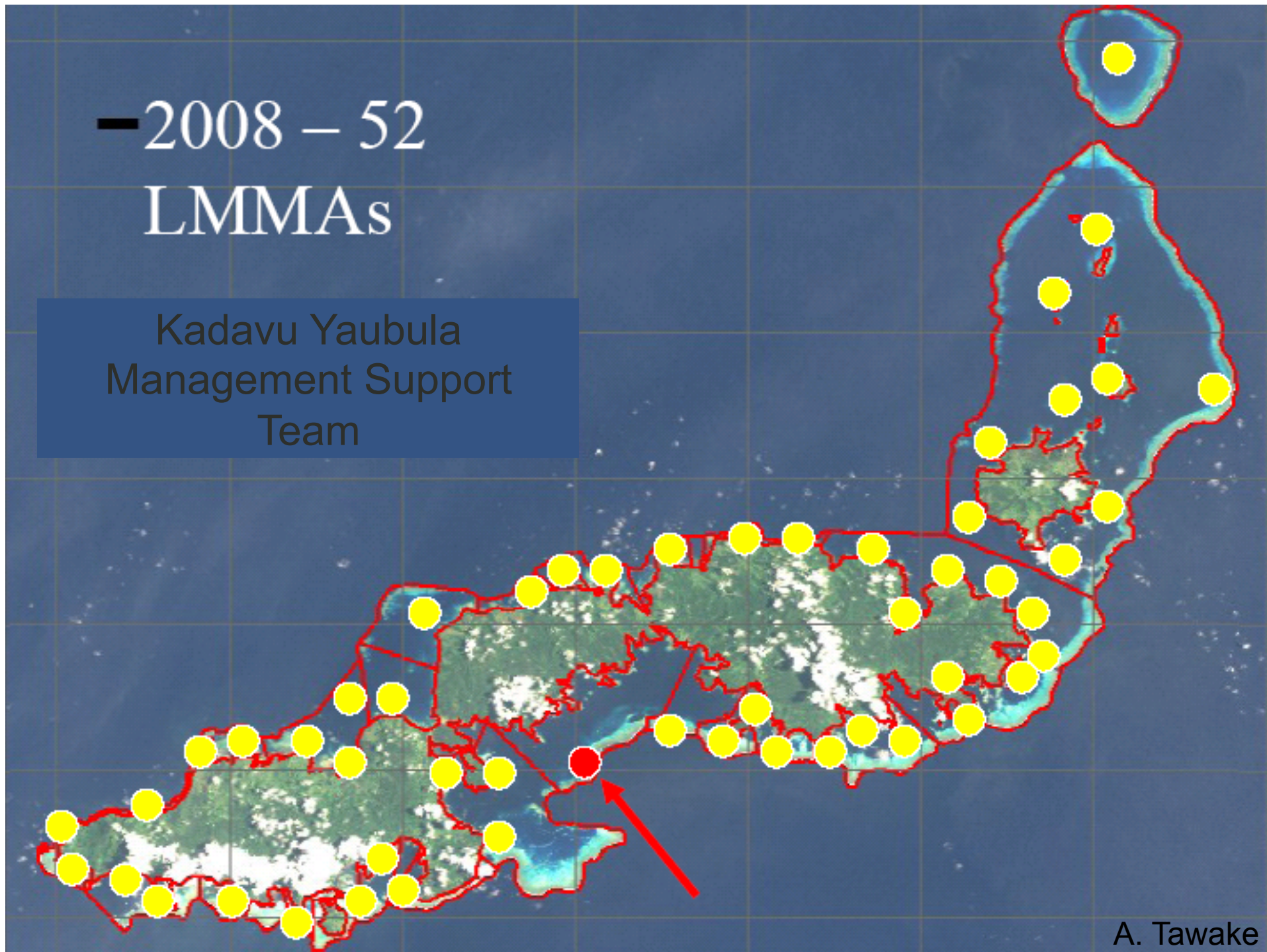
— 2003 – 12 LMMAs



A. Tawake

— 2008 – 52
LMMAs

Kadavu Yaubula
Management Support
Team



A. Tawake

Vinaka

jan.steffen@giz.de