



Ministry of Natural Resources and Environment



BEFORE YOU LEAVE SAMOA, STOP AND THINK... COULD YOU BE BREAKING WILDLIFE LAWS?

Souvenirs and handicrafts can sometimes include plant and animal products that are protected under the Convention on International Trade in Endangered Species of Wild Fauna and Flora (CITES) or wildlife laws of Samoa.

PROHIBITED

YOU CANNOT TAKE THESE ITEMS OUT OF SAMOA

- TURTLE SHELL OR TURTLE PRODUCTS
- WHALE AND DOLPHIN PARTS OR PRODUCTS
- SHARK OR RAY PARTS OR PRODUCTS



REQUIRES A PERMIT

- GIANT CLAMS AND THEIR SHELLS OR MEAT
- ORCHIDS AND OTHER PLANTS



ASK FIRST

- SEA CUCUMBERS
- SOME CORALS AND SEASHELLS
- YOU NEED A PERMIT TO EXPORT OR IMPORT SOME TYPES OF SEA CUCUMBERS, CORAL AND SHELLS – INCLUDING JEWELLERY MADE FROM THESE ITEMS
- ANY OTHER WILDLIFE: contact MNRE for information



IF IN DOUBT, ASK!

TO GET A PERMIT, OR TO FIND OUT IF YOU NEED ONE, CONTACT:

**MINISTRY OF NATURAL RESOURCES AND ENVIRONMENT (MNRE)
DIVISION OF ENVIRONMENT AND CONSERVATION**

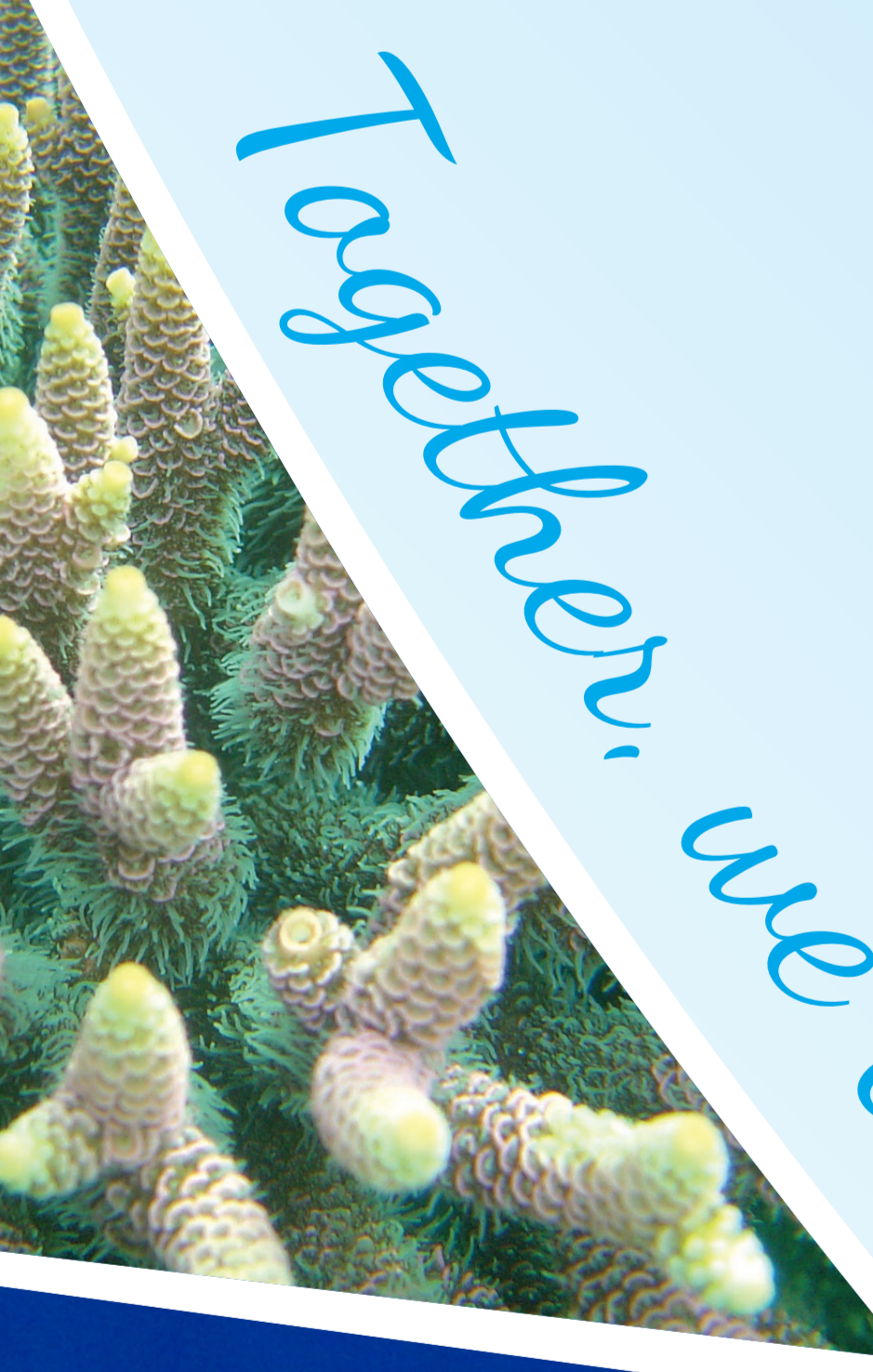


PHONE: +685 67 200

FAX: +685 23 176

EMAIL: info@mnre.gov.ws

Together, we can help our threatened species survive for future generations.



© Niua Tourism Office

© Jim Abernethy