

# PACC TUVALU NEWSLETTER

1ST QUARTER 2011

PACIFIC ADAPTATION TO CLIMATE CHANGE IN TUVALU



## Climate Change Development Consultation



*Stakeholders at the National Climate Change Development Policy Workshop, Funafuti, Tuvalu*

Climate change is a cross-cutting issue, impacting all sectors and at all levels and the government of Tuvalu has taken the initiative through the Pacific Adaptation to Climate Change Project to develop the National Climate Change Policy and a Joint National Action Plan (JNAP).

A week long initial dialogue on the development of the policy was held from the 10th to the 18th of May 2011 at the government conference room. The consultation was facilitated by a group of Technical Expertise from the Secretariat of the Pacific Regional Environment Programme and the Pacific Islands Applied Geosciences Commission Division of the

Secretariat of the Pacific Community. During the course of the consultation, the stakeholders and the expert team agreed on selecting a National Country Expert Team to work together with the Technical Expertise in the development of the National Climate Change Policy.

With the NCCP in place it will assist in ensuring climate change adaptation and mitigation activities are coordinated, and the integration of ecological, social-cultural, political and economic aspects vulnerable to climate change effects is considered early and throughout development planning, implementation, monitoring and evaluation processes.

### Special points of interest:

- Initial stage of Climate Change Policy Development has been completed
- The next stage of the Policy Development will take place in the beginning of the third Quarter

### Inside this issue:

Boil Water Before Drinking	2
Seasonal Outlook	2
More Compost Toilets under EU Funding	3
Coping with Climate Change	3
Share the Laughter	3
Student Pledges	4
Photo Gallery: World Environment Day	4

## Tuvalu celebrates World Environment Day

Tuvalu celebrated the 2011 Environment Day with the theme “Healthy Atmosphere, Land, Water = Healthy People” The honor was given to the Governor General, His Excellency Italeli Taeia to officially open the occasion.

Activities of the day included primary school students delivering their pledges,

a cleaning up campaign to mark the Environment Day and engaging with the tertiary level students on theme of the event.

And taking the lead role in the cleaning up campaign were members of the Environment Day Committee and the Director of Environment.

*See back for images of the event.*

## BOIL WATER BEFORE DRINKING



*Consultations with the Lofeagai Community Leaders.*

Water is a critical issue in Tuvalu, a Pacific island atoll nation where groundwater has been declared unsafe for human consumption due to high salinity and pollution. As a result, rainwater is a key water source on the eight inhabited atoll islands.

Unfortunately, the annual drought, which can last for up to three months, results in a scarcity of water with consequent frustrations and health problems in Tuvalu. This is especially the case on the capital atoll, Funafuti, where most of the population resides. Such drought episodes might be worsened by the effects of

climate change.

As a result, there are a number of climate change adaptation projects underway to assist Tuvalu build capacity to improve water supplies, including work on rainwater tanks, composting toilets and awareness-raising.

These projects are intended to achieve improvements within the next few years. Learning from the experiences of these projects will be crucial in designing climate change adaptation projects in the future. Consequently, SPC/SOPAC Division – on behalf of the IUCN-Oceania Regional Office – is undertaking an economic study

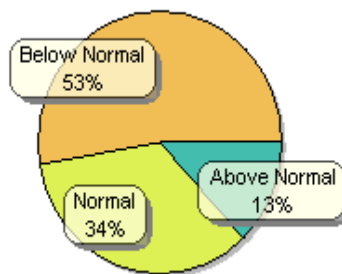
of three projects: (i) the SPREP-executed Pacific Adaptation to Climate Change (PACC) project, (ii) the SPC/SOPAC-executed disaster risk management (EU B-Envelope) project, (iii) the SPC/SOPAC-executed GEF-IWRM project. This set of analysis is part of a suite of case studies that IUCN, in collaboration with SOPAC, is undertaking as part of DCCEE funded project on 'Economic and social values of CCA and DRR: strengthening knowledge based climate change adaptation.

The economic study will identify key issues that affect the benefits of projects and that can be built in to the design of water adaptation projects in the future.

To collect data for the analysis, Federica Gerber – Natural Resource Economist of SOPAC – visited Tuvalu at the end of April.

Following several meetings with community members and government representatives, good data has now been secured in a variety of areas, including health, water supply, rainfall and temperature. A formal economic analysis is now underway and preliminary results are expected in August 2011. The final report is due to be released in October, and after which time IUCN and SPC/SOPAC looks forward to sharing findings and recommendations with key stakeholders, including the Tuvalu Government.

## Seasonal Climate Outlook for Tuvalu [Apr—Jun] (2011)



These outlooks are based upon the average April - June values of "SOI Values" (Southern Oscillation Index (SOI) values)

### Outlook for Funafuti

Outlook for Funafuti issued from the Meteorological Unit of Tuvalu.

The values are based upon the 3mth average value of the Southern Oscillation Index (SOI) values from April to June ( SOI Values=9.13 ), **there is only a 13% chance of getting "above-normal" rainfall for August through to the end of October**

### for Funafuti.

The most likely situation will be for "below-normal" rainfall in this period with the predicted probability being 53%.

The likelihood of "normal" conditions occurring is around 34%.

There is higher probability that the below normal scenario will occur more frequent than the normal scenario. Therefore, everyone is hereby informed of the this prediction for the next three months.

# More Compost Toilets under EU Funding

Due to the success of the pilot composting toilets in Funafuti, the Public Works Department has been encouraged to request for additional composting toilets for the capital and to replicate it in outer islands.

The additional eco-sanitation toilets are being funded under the sanitation component of the Water, Waste and Sanitation project with the European Union's 10<sup>th</sup> EDF according to EU technical adviser Mr. James Conway.

Mr. Conway says that the initial composting toilets on Funafuti had been proved very popular with households that used them, and



*A facilitator explains to the communities the use of the compost toilet*

therefore encourages the PWD to extend the project to the other household units.

Mr. Conway further states that this sanitation component of the EU's

WWS project for Tuvalu involves the construction and installation of 45 composting toilets for the capital and outer islands respectively.

The compost toilets for Funafuti will be built on the success of the existing pilot composting toilets while on the outer islands, it will be introduced and the project will see if these toilets work well with the households there and to see if interests surface in using the toilets in the long term.

Reports say the popularity of these eco-sanitation toilets soared when the capital was struck with drought in the recent past.

# Coping with Climate Change in the Pacific Island Region

Pacific Island Countries are among the most vulnerable to climate Change impacts and there is an urgent need to progress adaptation and mitigation measures in the Pacific.

The GIZ (Gesellschaft für Internationale Zusammenarbeit) in partnership with Secretariat of the Pacific Community has expanded their regional programme to strengthen the capacity of the countries to cope with impact of climate change under the programme 'Coping with Climate Change in the Pacific Island Region'.

The GIZ will also work in close partnership with the Secretariat of the Pacific Regional Environment Programme.

Tuvalu is amongst the countries that are under the assistance of the GIZ/SPC assistance and was also invited to a sub regional meeting held at Kiribati from the 30th June to the 4th July 2011.

Pacific Adaptation to Climate Change Coordinator was part of the Tuvalu nominated delegation to attend the above sub regional meeting.

The main objective is to strengthen the capacities of regional organizations in the Pacific Island Region and its member states to adapt to climate change impact and mitigate its cause. Three country were present at this sub regional workshop namely; Nauru, Kiribati and Tuvalu.

Off the seven focus of GIZ/SPC, the meeting was focusing on component two and three which is "Mainstreaming climate considerations and adaptation strategies and Implementing adaptation and mitigation measure"

Tuvalu being part of the meeting have identified some of the on going PACC activities such as the development of the Climate Change Policy and a Joint National Action Plan as a key priority that needs resources and as a result, SPC/European Union have shown interest in assisting.

Several other adaptation priorities were identified as Tuvalu's priority for assistance.

# LAUGHTER IS THE BEST MEDICINE

The guys were all at a deer camp. No one wanted to room with Bob, because he snored so badly. They decided it wasn't fair to make one of them stay with him the whole time, so they voted to take turns. The first guy slept with Bob and comes to breakfast the next morning with his hair a mess and his eyes all bloodshot.

They said, 'Man, what happened to you?' He said, 'Bob snored so loudly, I just sat up and watched him all night.'

'The next night it was a different guy's turn. In the morning, same thing - hair all standing up, eyes all bloodshot.'

They said, 'Man, what happened to you? You look awful!'



He said, 'Man, that Bob shakes the roof with his snoring. I watched him all night.'

The third night was Pete's turn. Pete was a big burly ex-Navy man; a man's man.

The next morning he came to breakfast bright eyed and bushy tailed.

' Good morning,' he said.

They couldn't believe it!

They said, 'Man, what happened?'

He said, 'Well, we got ready for bed. I went and tucked Bob into bed, patted him on the butt, and kissed him good night.'

Bob sat up and watched me all night.'



# PACIFIC ADAPTATION TO CLIMATE CHANGE

## PACC TUVALU



**CONTACT DETAILS:**  
Pacific Adaptation to Climate Change  
Water Sector  
Public Works Department  
Ministry of Works, Water and Energy  
Phone: 00 688 20 537  
E-mail: loia\_tausi@yahoo.com  
l molipi@gov.tv  
puavasa@gmail.com  
Website: [www.sprep.org/climate\\_change/pacc](http://www.sprep.org/climate_change/pacc)  
[www.eviro.gov.tv/climate\\_change/pacc](http://www.eviro.gov.tv/climate_change/pacc)

*Reports by Ms Loia Molipi ; Editing and Layout by Ms Setaita Tavanabola  
SPREP/PACC Communications Coordinator*

## World Environment Day PLEDGES

Students taking the lead role in trying to keep peace and harmony with the environment. The following are their pledges that they delivered during the environment day 2011:

- I pledge that I would conserve water
- I pledge that I would never waste water
- I pledge that I would never litter
- I pledge that I will help keep Tuvalu clean
- I pledge that I would never damage coral reefs
- I pledge that I would contribute to conserve our marine biodiversity
- I pledge that I would turn off the lights when not in use
- I pledge that I would contribute to the depletion of the ozone layer
- I pledge that I would do my best to contribute to a healthy environment
- I pledge that I would take action where necessary to reduce impact of climate change in Tuvalu

## PHOTO GALLERY: World Environment Day



Official opening of the event



Students reciting their pledges



Clean Up Campaign



(Far Right) Tuvalu Director of Environment taking part in the event