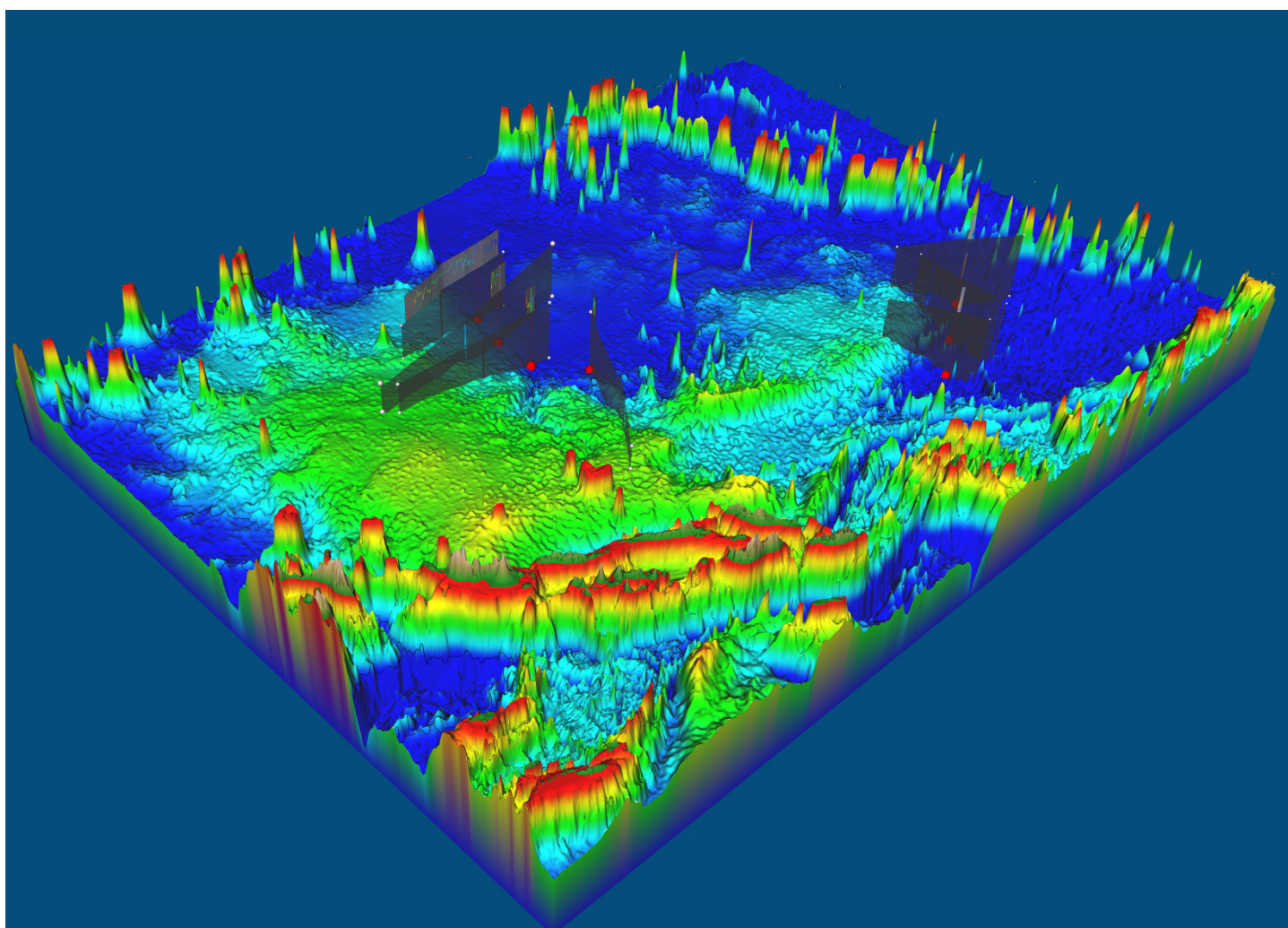


# Joint Submission to the Commission on the Limits of the Continental Shelf concerning the Ontong Java Plateau by the Federated States of Micronesia, Papua New Guinea and the Solomon Islands



Executive Summary

**The Joint Submission to the Commission on the Limits of the Continental Shelf was prepared jointly by the Federated States of Micronesia, the Independent State of Papua New Guinea, and the Solomon Islands.**

**The following ministries, departments and agencies of the Government of the Federated States of Micronesia were involved in the preparation of the Submission:**

National Oceanic Resources Management Authority  
Department of Foreign Affairs

**The following ministries, departments and agencies of the Government of the Independent State of Papua New Guinea were involved in the preparation of the Submission:**

Papua New Guinea Maritime Boundaries Delimitation Project Committee  
Department of Justice & Attorney General  
Department of Foreign Affairs  
Department of Mineral Policy & Geohazards Management  
Department of Lands- Office of National Mapping Bureau  
National Fisheries Authority  
National Maritime Safety Authority  
University of Papua New Guinea- School of Natural & Physical Sciences

**The following ministries, departments and agencies of the Government of the Solomon Islands involved in the preparation of the Submission:**

Ministry of Mines, Energy and Rural Electrification  
Ministry of Foreign Affairs & External Trade  
Attorney-General Chambers  
Ministry of Lands, Housing and Surveying

**The following organisations provided legal, policy and technical advice during the preparation of the Submission:**

Economic and Legal Section, Commonwealth Secretariat, London  
GeoLimits Consulting, Canada  
Geoscience Australia  
Grid Arendal, UNEP Shelf Programme, Norway  
Geocap AS, Norway  
National Oceanography Centre, Southampton  
Pacific Islands Applied Geoscience Commission (SOPAC)

## TABLE OF CONTENTS

1.	Introduction	3
2.	Outer Limit of the Continental Shelf in the Ontong Java Plateau Region	6
3.	Maps and Coordinates	7
4.	Provisions of Article 76 Invoked	9
5.	Outstanding Maritime Delimitations	9
6.	Detailed Description of the Outer Limits of the Extended Continental Shelf in the Ontong Java Plateau Region	9
7.	Commission Members Who Provided Advice on the Submission	12
8.	Note of Authentication	12
9.	Notes	13

## **ANNEXES**

Annex 1 - Table listing the points defining the outer limit of the extended continental shelf (Decimal Degrees)

**OJP-DOC-ES-ANNEX 1**

Annex 2 - Table listing the points defining the outer limit of the extended continental shelf (Degrees, Minutes, Seconds)

**OJP-DOC-ES-ANNEX 2**

## **MAPS**

(A0 Executive Summary Maps supplied separately)

The outer limit of the continental shelf in the Ontong Java Plateau region showing the outer limit line and the area of extended continental shelf

**Figure 1 and OJP-MAP-ES-1**

The outer limit of the continental shelf in the Ontong Java Plateau region showing the provisions of article 76 invoked

**Figure 2 and OJP-MAP-ES-2**

## 1. INTRODUCTION

---

- 1-1** The present submission to the Commission on the Limits of the Continental Shelf ('the Commission') is made by the Federated States of Micronesia, Papua New Guinea and the Solomon Islands (hereinafter referred to collectively as 'the three coastal States') pursuant to paragraph 8 of Article 76 of the 1982 United Nations Convention on the Law of the Sea ('the Convention') in support of the establishment by the three coastal States of the outer limits of the continental shelf that lie beyond 200 nautical miles (M) from the baselines from which the breadth of the territorial sea of the three coastal States is measured (hereinafter referred to as 'the territorial sea baselines') in the Ontong Java Plateau Region.
- 1-2** The three coastal States are small island nations located in the western Pacific Ocean and are each Contracting Parties to the Convention. In this regard, both Papua New Guinea and the Solomon Islands each respectively signed the Convention on the day it was opened for signature on 10 December 1982 and later ratified it. The Federated States of Micronesia became a party to the Convention through lodgement of an instrument of accession.
- 1-3** The Federated States of Micronesia is composed of four states (Yap, Chuuk, Pohnpei and Kosrae) constituted under the *Constitution of the Federated States of Micronesia* ('the Constitution'), comprising some 607 islands scattered over an area of approximately 2, 978 000 km<sup>2</sup>. The total land area of the Federated States of Micronesia is approximately 701 km<sup>2</sup>. The Federated States of Micronesia acceded to the Convention on 29 April 1991. The *Territory, Economic Zones, and Ports of Entry, Territorial Boundaries and Economic Zones* [Title 18, Cap. 1] Chapter of the Code of the Federated States of Micronesia, establishes maritime zones of the Federated States of Micronesia consistent with the provisions of the Convention. Whilst the legislation does not explicitly refer to the continental shelf, it is implied from the legislation to include seabed and subsoil.
- 1-4** The Independent State of Papua New Guinea is an archipelagic state comprising approximately 151 islands scattered over an area of approximately 3,120 000 km<sup>2</sup>.

The territory of Papua New Guinea includes islands located in the following island groups: the Trobriand Islands, the Bismarck archipelago, the Louisiade archipelago, the d'Entrecasteaux Islands, and Bougainville. The total land area of Papua New Guinea is approximately 462,840 km<sup>2</sup>. Papua New Guinea ratified the Convention on 14 January 1997. The *National Seas Act 1977* establishes a number of the maritime zones of Papua New Guinea. The *1978 Offshore Seas Proclamation declared under the National Seas Act* provides the coordinates of areas declared as archipelagic waters and the 200 M zones, both of which are referred to as offshore seas. New maritime zones legislation is currently being prepared by the Government of Papua New Guinea, which will declare all of the maritime zones of Papua New Guinea including the continental shelf, in a manner that reflects the relevant provisions of the Convention.

- 1-5** The Solomon Islands is an archipelagic state located in the Western Pacific Ocean, south-east of the Papua New Guinea island of Bougainville and to the northwest of Australia. The Solomon Islands is composed of approximately 1,000 islands scattered over an area of approximately 1,340,000 km<sup>2</sup>, the largest of which is the island of Guadalcanal where the capital city of Honiara is located. The total land area of the Solomon Islands is approximately 27,556 km<sup>2</sup>. The Solomon Islands ratified the Convention on 23 June 1997. The *Continental Shelf Act Cap, 94* together with the *Delimitation of Maritime Waters Act, Cap 95* provide for the establishment of the maritime zones of the Solomon Islands in a manner consistent with the provisions of the Convention.
- 1-6** The three coastal States make this Submission with respect to the Ontong Java Plateau Region, which is dominated by an enormous submarine plateau that covers an area of approximately 2x10<sup>6</sup> km<sup>2</sup>, and stands 2000 to 4000 m above the adjacent deep ocean floor. The Ontong Java Plateau is surmounted by islands of the Federated States of Micronesia (Kapingamarangi) in the northwest, Papua New Guinea (Nuguria, Kilinailou, Tauu and Nukumanu islands) in the southwest and south, and the Solomon Islands (Lord Howe - Ontong Java Atoll, Obelisk, Anuta and Stewart islands) in the south and southeast.

- 1-7** Under Article 4 of Annex II to the Convention, as supplemented by the Decisions of the Eleventh (SPLOS/72) and Eighteenth (SPLOS/183) Meetings of the States Parties to the Convention respectively regarding the ten-year period established by article 4 of Annex II to the Convention and, a coastal State for which the Convention entered into force before 13 May 1999 is required to submit particulars of the outer limits of the continental shelf to the Commission, together with supporting scientific and technical data by 13 May 2009. This submission by the three coastal States satisfies that requirement.
- 1-8** Considering that the three coastal States are of the view that they are each entitled to an area of extended continental shelf in the region of the Ontong Java Plateau, they have agreed to make a joint submission to the Commission for the establishment of the outer limits of the continental shelf in the area that lies beyond 200 M measured from the territorial sea baselines of the three coastal States, in accordance with paragraph 4 of Annex I to the Rules of Procedure of the Commission on the Limits of the Continental Shelf (CLCS/40/Rev.1), adopted by the Commission on 17 April 2008 (hereinafter referred to as the 'Rules of Procedure').
- 1-9** This submission is therefore of a joint nature, and comprises a single document prepared collectively and collaboratively by the three coastal States. The preparation of the submission was underpinned by the conclusion of the *Memorandum of Understanding between the Government of the Federated States of Micronesia, and the Government of the Independent State of Papua New Guinea, And The Government of Solomon Islands to Cooperate on Matters Relating to the Ontong Java Plateau Submission to the United Nations Commission on the Limits of the Continental Shelf for an Extended Continental Shelf Between the three Countries* concluded on 6 March 2009.
- 1-10** In addition, in accordance with paragraph 3 of Annex I to the Rules of Procedure, this joint submission represents a partial submission in respect of a portion only of the extended continental shelf of each of the three coastal States. Submissions for such other portions of extended continental shelf shall be made by each of the three coastal States individually at a later date. The three coastal States have also

submitted preliminary information in respect of the other portions of extended continental shelf invoking the decision of the States Parties contained in SPLOS/183.

## **2. OUTER LIMIT OF THE CONTINENTAL SHELF IN THE ONTONG JAVA PLATEAU REGION**

---

- 2-1** As provided for under paragraph 1 of Article 76 of the Convention, the three coastal States have a continental shelf comprising the seabed and subsoil of the submarine areas that extend beyond their territorial seas throughout the natural prolongation of their respective land territory to the outer edge of the continental margin, up to the limits provided for in paragraphs 4 to 6 of Article 76 or, to a distance of 200 M from the territorial sea baselines of the two coastal States where the outer edge of the continental margin does not extend up to that distance.
- 2-2** Paragraphs 4 to 6 of Article 76 of the Convention set out the manner in which a coastal State may establish the outer edge of its continental margin, and thus the legal continental shelf wherever that margin extends beyond 200 M measured from the territorial sea baselines.
- 2-3** As set out in paragraph 7 of Article 76 of the Convention, a coastal State is to delineate the outer limits of the extended continental shelf by geodesics not exceeding 60 M in length, connecting fixed points ('fixed points') defined by coordinates of latitude and longitude.
- 2-4** The data submitted by the three coastal States in support of the submission establish that the outer edge of the continental margin appurtenant to the relevant land territories of the three coastal States in the Ontong Java Plateau region extends beyond 200 M measured from the territorial sea baselines of the three coastal States. This area shall be referred to by the three coastal States as the extended continental shelf.
- 2-5** Section 6 of the Executive Summary provides an outline of the Ontong Java Plateau region, including a depiction of the outer limits of the extended continental

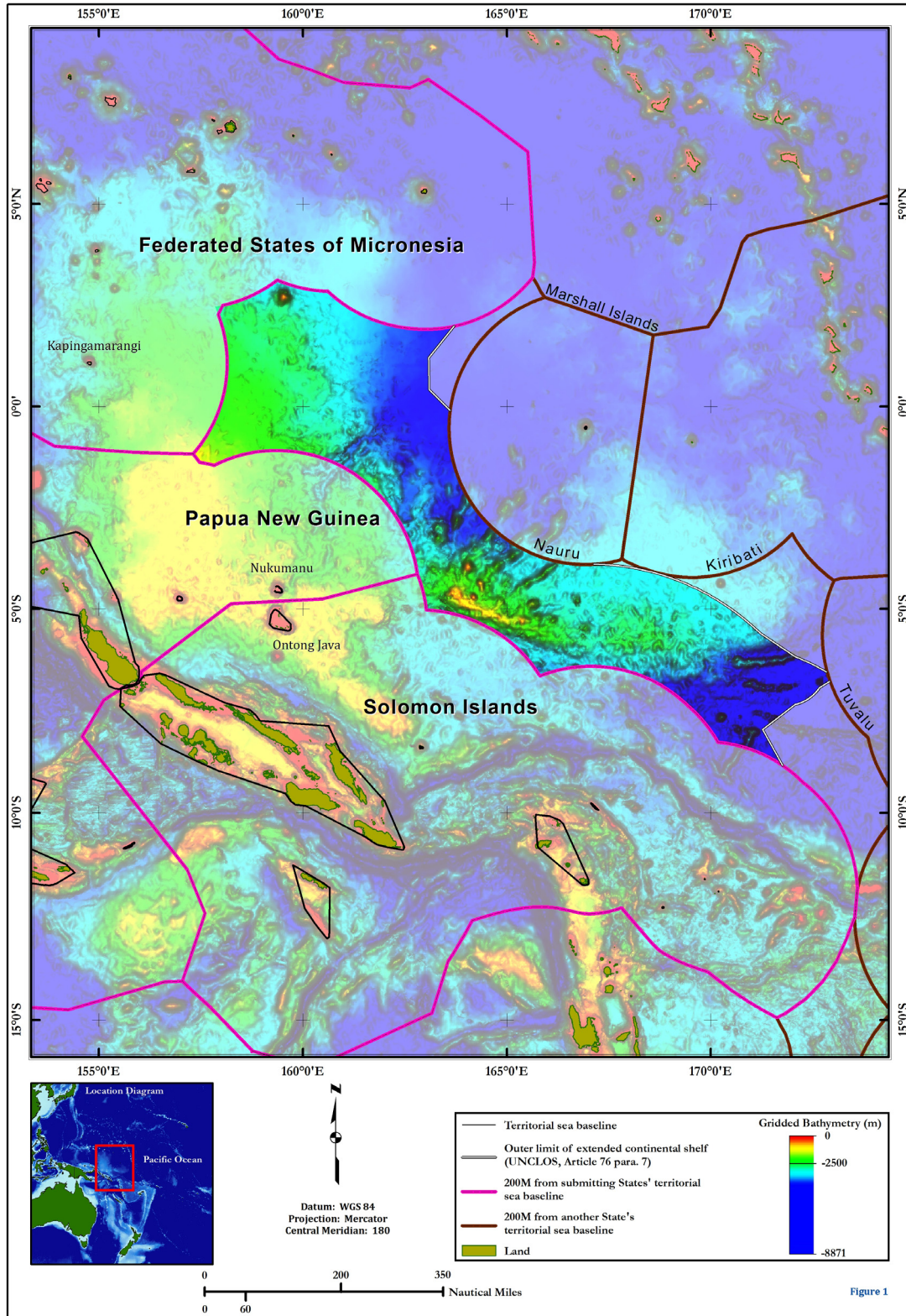


shelf submitted by the three coastal States in this region. A map of the outer limit of the extended continental shelf is shown in Figure 1 and OJP-MAP-ES-1.

### **3. MAPS AND COORDINATES**

---

- 3-1** Two (2) maps at an appropriate scale are included in this Executive Summary in two forms: as Figure 1 (OJP-Map-ES-1) and Figure 2 (OJP-MAP-ES-2) within this document, and as separate A0-size maps (See: list of Maps and Figures, p. 2). The first map provides an overview of the area of extended continental shelf submitted by the three coastal States to the Commission in this submission. The second map depicts the location of the fixed points that define the outer limit of the relevant area and the provisions of Article 76 invoked.
- 3-2** Lists of coordinates of the fixed points that define the outer limit of the extended continental shelf in this submission are supplied in Annex 1 (OJP-ES-ANNEX 1) and Annex 2 (OJP-ES-ANNEX 2) to the Executive Summary, which lists the fixed points defining the outer limit of the extended continental shelf in the Ontong Java Plateau region in decimal degrees and in degrees, minutes and seconds respectively. The provision of Article 76 invoked to define each fixed point, as well as the distance between adjacent points, is also indicated in Annex 1 and Annex 2.
- 3-3** In the event of any discrepancy between the two formats of the coordinates for any particular fixed point, the three coastal States rely on the coordinates farther seaward from their territorial sea, subject to the requirements of Article 76 of the Convention.



**Figure 1** The outer limit of the continental shelf in the Ontong Java Plateau Region depicting the outer limit line and the area of Extended Continental Shelf

OJP-MAP-ES-1

#### **4. PROVISIONS OF ARTICLE 76 INVOKED**

---

For the purposes of this Submission, the three coastal States invoke paragraphs 4(a)(ii), 4(b), 5 and 7 of Article 76 of the Convention to support the submission delineating the outer limits of the continental shelf beyond 200 M from the territorial sea baselines in the region of the Ontong Java Plateau.

#### **5. OUTSTANDING MARITIME DELIMITATIONS**

---

**5-1** The three coastal States wish to inform the Commission that the area of extended continental shelf in this submission is not the subject of any dispute between them or any other State(s). Moreover, in the view of the three coastal States, the consideration of this submission by the Commission will not prejudice matters relating to the delimitation of boundaries between them and any other State(s).

**5-2** The three coastal States have agreed further to make this submission without prejudice to the delimitation of maritime boundaries between them, pursuant to paragraph 4(a) of Annex I to the Rules of Procedure.

#### **6. DETAILED DESCRIPTION OF THE OUTER LIMITS OF THE EXTENDED CONTINENTAL SHELF IN THE ONTONG JAVA PLATEAU REGION**

---

**6-1** The Ontong Java Plateau region of the Western Pacific Ocean is dominated by the Ontong Java Plateau, an enormous submarine plateau that covers an area of about  $2 \times 10^6$  km<sup>2</sup>. The plateau is the largest of the world's large igneous provinces, and is one of a number of such submarine magmatic and composite features scattered throughout the Pacific, Indian, and Southern Oceans such as the Hikurangi, Manihiki and Kerguelen Plateaus.

**6-2** The Ontong Java Plateau formed from about 120 million years ago, and now has a magmatic crust up to about 35 km thick and a low-velocity root that extends some 300 km into the mantle. During the last 15 million years the Ontong Java Plateau collided with and was accreted to the old Solomon Island volcanic arc forming on-

land exposures of the plateau's basaltic basement in the Solomon Islands, notably on Malaita, Santa Isabel, and San Cristobal islands.

- 6-3** The Ontong Java Plateau is surmounted by islands of the Federated States of Micronesia (Kapingamarangi Island) in the northwest, Papua New Guinea (Nuguria, Kilinailou, Tauu and Nukumanu islands) in the southwest and south, and the Solomon Islands (Lord Howe - Ontong Java Atoll, Obelisk, Anuta and Stewart islands) in the south and southeast. The Ontong Java Plateau and its associated landmasses are all physically juxtaposed as part of the same morphological feature and are the result of a linked chain of geological processes and events. Hence the plateau and its subsidiary elevations are natural components of the continental margin of these island landmasses and comprise the submerged prolongation of the three coastal States.
- 6-4** The outer limit of the extended continental shelf in the Ontong Java Plateau region encloses an area of approximately **602,237 km<sup>2</sup>** extending beyond 200 M from the territorial sea baselines of the three coastal States.
- 6-5** The three coastal States have determined that the outer limit of the extended continental shelf in Ontong Java Plateau region is composed of three segments (north, central and south) comprised of **424** fixed points, of which:
- **92** are defined by arcs 60 M from the foot of the slope (Article 76, paragraph 4(a)(ii) of the Convention);
  - **326** are defined by the 350 M constraint line (Article 76, paragraph 5 of the Convention);
  - **1** point (**OJP-ECS-001**), where the 60 M formula line (Article 76, paragraph 4(a)(ii) of the Convention) that defines the outer limit of the extended continental shelf intersects the 200 M line from the territorial sea baseline of the Federated States of Micronesia;

- 1 point (**OJP-ECS-004**), where the 60 M formula line (Article 76, paragraph 4(a)(ii) of the Convention) that defines the outer limit of the extended continental shelf intersects the line 200 M from the territorial sea baseline of Nauru;
- 1 point (**OJP-ECS-005**), where the 350 M constraint line (Article 76, paragraph 5 of the Convention) that defines the outer limit of the extended continental shelf intersects the line 200 M from the territorial sea baseline of Nauru;
- 1 point (**OJP-ECS-332**), where the 350 M constraint line (Article 76, paragraph 5 of the Convention) that defines the outer limit of the extended continental shelf intersects the line 200 M from the territorial sea baseline of Tuvalu;
- 1 point (**OJP-ECS-333**), where the 60 M formula line (Article 76, paragraph 4(a)(ii) of the Convention) that defines the outer limit of the extended continental shelf intersects the line 200 M from the territorial sea baseline of Tuvalu; and,
- 1 point (**OJP-ECS-424**), where the outer limit of the extended continental shelf joins to the 200 M line from the territorial sea baseline of the Solomon Islands that forms the outer limit of the Solomon Islands continental shelf to the southeast of the region.

**6-6** Each successive pair of fixed points defining the outer limit of the extended continental shelf in the Ontong Java Plateau region is connected by a straight line not exceeding 60 M in length in accordance with paragraph 5 of Article 76.

**6-7** In addition, that part of the outer limit of the continental shelf lying to the southeast of the ECS fixed point **OJP-ECS-004** and connecting this point to ECS fixed point **OJP-ECS-005**, is defined by the 200 M line constructed from Nauru; and that part of the outer limit of the continental shelf lying to the south of the ECS fixed point **OJP-**

**ECS-332** and connecting this point to ECS fixed point **OJP-ECS-333**, is defined by the 200 M line constructed from Tuvalu.

- 6-8** The list of Article 76 fixed points delineating the outer limits of the extended continental shelf in the Ontong Java Plateau region has been supplied by the three coastal States, and is included in Annex 1 and Annex 2 to this Executive Summary.
- 6-9** The three coastal States invoke Article 76 of the Convention, with particular reference to paragraphs 4(a)(ii), 4(b), 5 and 7, in support of the submission of the outer limit of the continental shelf in the Ontong Java Plateau region.

## **7. COMMISSION MEMBERS WHO PROVIDED ADVICE ON THE SUBMISSION**

---

The three coastal States were assisted in the preparation of this submission by Mr Philip Alexander Symonds, member of the Commission on the Limits of the Continental Shelf (2002-present).

## **8. NOTE OF AUTHENTICATION**

---

All the maps, charts and databases forming part of this joint partial submission were prepared by the relevant agencies of the three coastal States that have responsibility for preparing such material and for certifying its quality and reliability.

## 9. NOTES

---

### Map Notes

- 9-1** The depiction of the 200 M line from the territories of a State other than those of the three coastal States, and lines equidistant from the land territory of the three coastal States and other States is based on information available at the time of production, and should not be taken to signify acceptance of the validity at international law of basepoints determined by another coastal State, with the exception of those cases where lines have been agreed in a maritime boundary treaty between any of the three coastal States and an opposite or adjacent coastal State.
- 9-2** Unshaded areas depict the area of extended continental shelf as submitted to the Commission. White shading depicts all areas that lie beyond the area described above.

### Table Notes

- 9-3** The tables included at Annex 1 and Annex 2 to this Executive Summary list by number (identifiers) and coordinates (in latitude and longitude) the fixed points that define the outer limit of the extended continental shelf of the three coastal States in the Ontong Java Plateau region. The distance in nautical miles from one point on the outer limit line to the next is given in the fourth column of the table.
- 9-4** All coordinates of fixed points defined according to the provisions of Article 76 of the Convention are expressed in this document in the WGS84 geodetic reference system.

## Abbreviations

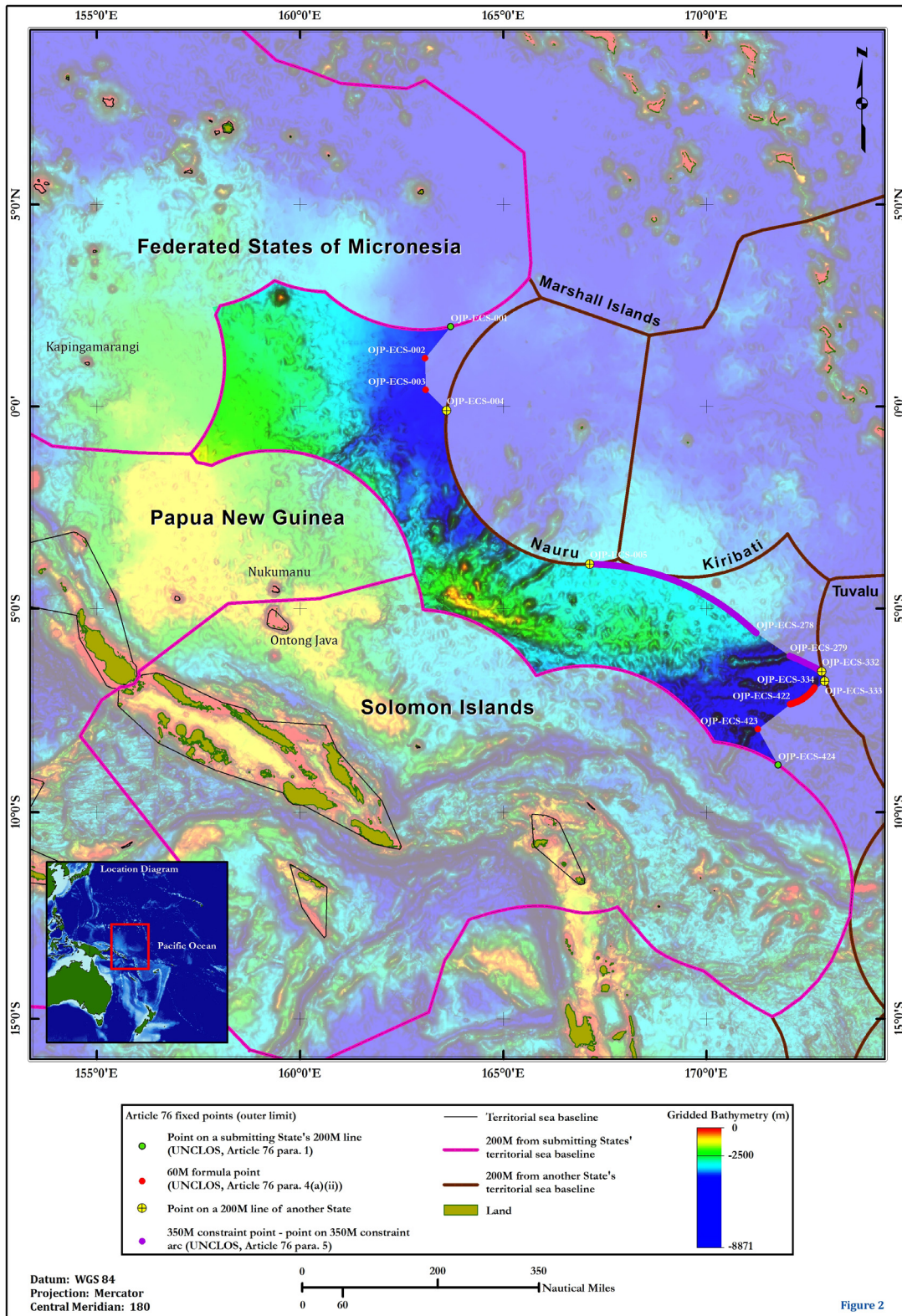
**9-5** The following abbreviations are used in the tables included at Annex 1 and Annex 2 to denote the Article 76 provisions invoked:

<b>200 M</b>	200 M line from the territorial sea baseline (Article 76, para. 1)
<b>60 M</b>	60 M (Hedberg) formula point (Article 76, para. 4(a)(ii))
<b>350 M</b>	350 M constraint point (Article 76, para. 5).

Other abbreviations used:

<b>M</b>	nautical mile (1852m)
<b>m</b>	metre





**Figure 2** The outer limit of the continental shelf in the Ontong Java Plateau region showing the provisions of Article 76 invoked

OJP-MAP-ES-2

**ANNEX 1****Table listing the points defining the outer limit of the extended continental shelf (Decimal Degrees)**

ECS Point	Latitude (DD)	Longitude (DD)	Dist. from previous(M)	Article 76 Provision Invoked
<b>North</b>				
OJP-ECS-001	1.983857	163.703418	0.000	200 M
OJP-ECS-002	1.199612	163.079072	59.997	60 M
OJP-ECS-003	0.418225	163.093674	46.661	60 M
OJP-ECS-004	-0.098184	163.609207	43.713	200 M - Other State
<b>Central</b>				
OJP-ECS-005	-3.899025	167.133102	0.000	200 M Other State/350 M
OJP-ECS-006	-3.899041	167.134567	0.088	350 M
OJP-ECS-007	-3.899269	167.151245	1.000	350 M
OJP-ECS-008	-3.899546	167.167923	1.000	350 M
OJP-ECS-009	-3.899871	167.184586	1.000	350 M
OJP-ECS-010	-3.900243	167.201263	1.000	350 M
OJP-ECS-011	-3.900661	167.217926	1.000	350 M
OJP-ECS-012	-3.901128	167.234604	1.000	350 M
OJP-ECS-013	-3.901639	167.251266	1.000	350 M
OJP-ECS-014	-3.902201	167.267929	1.000	350 M
OJP-ECS-015	-3.902810	167.284592	1.000	350 M
OJP-ECS-016	-3.903464	167.301254	1.000	350 M
OJP-ECS-017	-3.904168	167.317917	1.000	350 M
OJP-ECS-018	-3.904917	167.334579	1.000	350 M
OJP-ECS-019	-3.905715	167.351227	1.000	350 M
OJP-ECS-020	-3.906559	167.367889	1.000	350 M
OJP-ECS-021	-3.907452	167.384537	1.000	350 M
OJP-ECS-022	-3.908391	167.401184	1.000	350 M
OJP-ECS-023	-3.909376	167.417831	1.000	350 M
OJP-ECS-024	-3.910409	167.434479	1.000	350 M
OJP-ECS-025	-3.911492	167.451111	1.000	350 M
OJP-ECS-026	-3.912620	167.467758	1.000	350 M
OJP-ECS-027	-3.913795	167.484390	1.000	350 M
OJP-ECS-028	-3.915018	167.501022	1.000	350 M
OJP-ECS-029	-3.916287	167.517654	1.000	350 M
OJP-ECS-030	-3.917605	167.534271	1.000	350 M
OJP-ECS-031	-3.918969	167.550888	1.000	350 M
OJP-ECS-032	-3.920381	167.567505	1.000	350 M

1982 United Nations Convention on the Law of the Sea

ECS Point	Latitude (DD)	Longitude (DD)	Dist. from previous(M)	Article 76 Provision Invoked
OJP-ECS-033	-3.921838	167.584122	1.000	350 M
OJP-ECS-034	-3.923345	167.600723	1.000	350 M
OJP-ECS-035	-3.924897	167.617325	1.000	350 M
OJP-ECS-036	-3.926498	167.633926	1.000	350 M
OJP-ECS-037	-3.928145	167.650528	1.000	350 M
OJP-ECS-038	-3.929839	167.667114	1.000	350 M
OJP-ECS-039	-3.931580	167.683701	1.000	350 M
OJP-ECS-040	-3.933369	167.700287	1.000	350 M
OJP-ECS-041	-3.935205	167.716858	1.000	350 M
OJP-ECS-042	-3.937086	167.733429	1.000	350 M
OJP-ECS-043	-3.939017	167.750000	1.000	350 M
OJP-ECS-044	-3.940992	167.766556	1.000	350 M
OJP-ECS-045	-3.943016	167.783112	1.000	350 M
OJP-ECS-046	-3.945086	167.799652	1.000	350 M
OJP-ECS-047	-3.947204	167.816193	1.000	350 M
OJP-ECS-048	-3.949369	167.832733	1.000	350 M
OJP-ECS-049	-3.951580	167.849258	1.000	350 M
OJP-ECS-050	-3.953837	167.865784	1.000	350 M
OJP-ECS-051	-3.956142	167.882309	1.000	350 M
OJP-ECS-052	-3.958495	167.898819	1.000	350 M
OJP-ECS-053	-3.960895	167.915314	1.000	350 M
OJP-ECS-054	-3.963340	167.931824	1.000	350 M
OJP-ECS-055	-3.965832	167.948303	1.000	350 M
OJP-ECS-056	-3.968371	167.964783	1.000	350 M
OJP-ECS-057	-3.970958	167.981262	1.000	350 M
OJP-ECS-058	-3.973593	167.997742	1.000	350 M
OJP-ECS-059	-3.976272	168.014191	1.000	350 M
OJP-ECS-060	-3.978997	168.030655	1.000	350 M
OJP-ECS-061	-3.981771	168.047104	1.000	350 M
OJP-ECS-062	-3.984590	168.063538	1.000	350 M
OJP-ECS-063	-3.987457	168.079971	1.000	350 M
OJP-ECS-064	-3.990371	168.096390	1.000	350 M
OJP-ECS-065	-3.993330	168.112808	1.000	350 M
OJP-ECS-066	-3.996336	168.129211	1.000	350 M
OJP-ECS-067	-3.999388	168.145615	1.000	350 M
OJP-ECS-068	-4.002486	168.162003	1.000	350 M
OJP-ECS-069	-4.005632	168.178375	1.000	350 M
OJP-ECS-070	-4.008824	168.194748	1.000	350 M
OJP-ECS-071	-4.012063	168.211121	1.000	350 M
OJP-ECS-072	-4.015348	168.227463	1.000	350 M

1982 United Nations Convention on the Law of the Sea

ECS Point	Latitude (DD)	Longitude (DD)	Dist. from previous(M)	Article 76 Provision Invoked
OJP-ECS-073	-4.018680	168.243820	1.000	350 M
OJP-ECS-074	-4.022058	168.260147	1.000	350 M
OJP-ECS-075	-4.025482	168.276474	1.000	350 M
OJP-ECS-076	-4.028952	168.292786	1.000	350 M
OJP-ECS-077	-4.032471	168.309097	1.000	350 M
OJP-ECS-078	-4.036032	168.325394	1.000	350 M
OJP-ECS-079	-4.039642	168.341675	1.000	350 M
OJP-ECS-080	-4.043298	168.357956	1.000	350 M
OJP-ECS-081	-4.046999	168.374222	1.000	350 M
OJP-ECS-082	-4.050747	168.390472	1.000	350 M
OJP-ECS-083	-4.054543	168.406723	1.000	350 M
OJP-ECS-084	-4.058383	168.422958	1.000	350 M
OJP-ECS-085	-4.062269	168.439178	1.000	350 M
OJP-ECS-086	-4.066199	168.455383	1.000	350 M
OJP-ECS-087	-4.070179	168.471588	1.000	350 M
OJP-ECS-088	-4.074203	168.487778	1.000	350 M
OJP-ECS-089	-4.078273	168.503952	1.000	350 M
OJP-ECS-090	-4.082389	168.520126	1.000	350 M
OJP-ECS-091	-4.086552	168.536285	1.000	350 M
OJP-ECS-092	-4.090760	168.552429	1.000	350 M
OJP-ECS-093	-4.095013	168.568558	1.000	350 M
OJP-ECS-094	-4.099313	168.584671	1.000	350 M
OJP-ECS-095	-4.103659	168.600784	1.000	350 M
OJP-ECS-096	-4.108049	168.616882	1.000	350 M
OJP-ECS-097	-4.112485	168.632965	1.000	350 M
OJP-ECS-098	-4.116968	168.649033	1.000	350 M
OJP-ECS-099	-4.121496	168.665100	1.000	350 M
OJP-ECS-100	-4.126069	168.681137	1.000	350 M
OJP-ECS-101	-4.130687	168.697174	1.000	350 M
OJP-ECS-102	-4.135353	168.713196	1.000	350 M
OJP-ECS-103	-4.140064	168.729202	1.000	350 M
OJP-ECS-104	-4.144817	168.745193	1.000	350 M
OJP-ECS-105	-4.149618	168.761169	1.000	350 M
OJP-ECS-106	-4.154466	168.777145	1.000	350 M
OJP-ECS-107	-4.159357	168.793091	1.000	350 M
OJP-ECS-108	-4.164292	168.809036	1.000	350 M
OJP-ECS-109	-4.169276	168.824951	1.000	350 M
OJP-ECS-110	-4.174302	168.840866	1.000	350 M
OJP-ECS-111	-4.179373	168.856766	1.000	350 M
OJP-ECS-112	-4.184492	168.872650	1.000	350 M

1982 United Nations Convention on the Law of the Sea

ECS Point	Latitude (DD)	Longitude (DD)	Dist. from previous(M)	Article 76 Provision Invoked
OJP-ECS-113	-4.189655	168.888519	1.000	350 M
OJP-ECS-114	-4.194861	168.904373	1.000	350 M
OJP-ECS-115	-4.200113	168.920212	1.000	350 M
OJP-ECS-116	-4.205411	168.936035	1.000	350 M
OJP-ECS-117	-4.210753	168.951843	1.000	350 M
OJP-ECS-118	-4.216139	168.967651	1.000	350 M
OJP-ECS-119	-4.221571	168.983429	1.000	350 M
OJP-ECS-120	-4.227048	168.999191	1.000	350 M
OJP-ECS-121	-4.232569	169.014938	1.000	350 M
OJP-ECS-122	-4.238134	169.030670	1.000	350 M
OJP-ECS-123	-4.243746	169.046387	1.000	350 M
OJP-ECS-124	-4.249401	169.062088	1.000	350 M
OJP-ECS-125	-4.255100	169.077789	1.000	350 M
OJP-ECS-126	-4.260845	169.093460	1.000	350 M
OJP-ECS-127	-4.266632	169.109116	1.000	350 M
OJP-ECS-128	-4.272465	169.124741	1.000	350 M
OJP-ECS-129	-4.278342	169.140366	1.000	350 M
OJP-ECS-130	-4.284265	169.155975	1.000	350 M
OJP-ECS-131	-4.290231	169.171570	1.000	350 M
OJP-ECS-132	-4.296241	169.187134	1.000	350 M
OJP-ECS-133	-4.302294	169.202698	1.000	350 M
OJP-ECS-134	-4.308393	169.218231	1.000	350 M
OJP-ECS-135	-4.314536	169.233749	1.000	350 M
OJP-ECS-136	-4.320722	169.249252	1.000	350 M
OJP-ECS-137	-4.326951	169.264740	1.000	350 M
OJP-ECS-138	-4.333227	169.280212	1.000	350 M
OJP-ECS-139	-4.339544	169.295654	1.000	350 M
OJP-ECS-140	-4.345906	169.311096	1.000	350 M
OJP-ECS-141	-4.352313	169.326508	1.000	350 M
OJP-ECS-142	-4.358762	169.341904	1.000	350 M
OJP-ECS-143	-4.365254	169.357285	1.000	350 M
OJP-ECS-144	-4.371792	169.372650	1.000	350 M
OJP-ECS-145	-4.378372	169.388000	1.000	350 M
OJP-ECS-146	-4.384997	169.403320	1.000	350 M
OJP-ECS-147	-4.391663	169.418625	1.000	350 M
OJP-ECS-148	-4.398374	169.433914	1.000	350 M
OJP-ECS-149	-4.405129	169.449173	1.000	350 M
OJP-ECS-150	-4.411925	169.464432	1.000	350 M
OJP-ECS-151	-4.418767	169.479660	1.000	350 M
OJP-ECS-152	-4.425649	169.494873	1.000	350 M

1982 United Nations Convention on the Law of the Sea

ECS Point	Latitude (DD)	Longitude (DD)	Dist. from previous(M)	Article 76 Provision Invoked
OJP-ECS-153	-4.432575	169.510056	1.000	350 M
OJP-ECS-154	-4.439520	169.525253	1.000	350 M
OJP-ECS-155	-4.446506	169.540421	1.000	350 M
OJP-ECS-156	-4.453534	169.555557	1.000	350 M
OJP-ECS-157	-4.460607	169.570694	1.000	350 M
OJP-ECS-158	-4.467720	169.585800	1.000	350 M
OJP-ECS-159	-4.474876	169.600876	1.000	350 M
OJP-ECS-160	-4.482078	169.615952	1.000	350 M
OJP-ECS-161	-4.489319	169.630997	1.000	350 M
OJP-ECS-162	-4.496604	169.646027	1.000	350 M
OJP-ECS-163	-4.503931	169.661026	1.000	350 M
OJP-ECS-164	-4.511303	169.676010	1.000	350 M
OJP-ECS-165	-4.518716	169.690979	1.000	350 M
OJP-ECS-166	-4.526172	169.705917	1.000	350 M
OJP-ECS-167	-4.533668	169.720840	1.000	350 M
OJP-ECS-168	-4.541209	169.735748	1.000	350 M
OJP-ECS-169	-4.548790	169.750626	1.000	350 M
OJP-ECS-170	-4.556415	169.765488	1.000	350 M
OJP-ECS-171	-4.564079	169.780319	1.000	350 M
OJP-ECS-172	-4.571789	169.795135	1.000	350 M
OJP-ECS-173	-4.579539	169.809937	1.000	350 M
OJP-ECS-174	-4.587330	169.824707	1.000	350 M
OJP-ECS-175	-4.595166	169.839462	1.000	350 M
OJP-ECS-176	-4.603040	169.854187	1.000	350 M
OJP-ECS-177	-4.610959	169.868896	1.000	350 M
OJP-ECS-178	-4.618916	169.883591	1.000	350 M
OJP-ECS-179	-4.626918	169.898254	1.000	350 M
OJP-ECS-180	-4.634960	169.912888	1.000	350 M
OJP-ECS-181	-4.643043	169.927505	1.000	350 M
OJP-ECS-182	-4.651169	169.942108	1.000	350 M
OJP-ECS-183	-4.659335	169.956680	1.000	350 M
OJP-ECS-184	-4.667542	169.971222	1.000	350 M
OJP-ECS-185	-4.675791	169.985748	1.000	350 M
OJP-ECS-186	-4.684081	170.000259	1.000	350 M
OJP-ECS-187	-4.692413	170.014740	1.000	350 M
OJP-ECS-188	-4.700787	170.029190	1.000	350 M
OJP-ECS-189	-4.709200	170.043625	1.000	350 M
OJP-ECS-190	-4.717654	170.058044	1.000	350 M
OJP-ECS-191	-4.726148	170.072433	1.000	350 M
OJP-ECS-192	-4.734685	170.086792	1.000	350 M

1982 United Nations Convention on the Law of the Sea

ECS Point	Latitude (DD)	Longitude (DD)	Dist. from previous(M)	Article 76 Provision Invoked
OJP-ECS-193	-4.743261	170.101120	1.000	350 M
OJP-ECS-194	-4.751879	170.115448	1.000	350 M
OJP-ECS-195	-4.760535	170.129730	1.000	350 M
OJP-ECS-196	-4.769234	170.143997	1.000	350 M
OJP-ECS-197	-4.777973	170.158234	1.000	350 M
OJP-ECS-198	-4.786750	170.172455	1.000	350 M
OJP-ECS-199	-4.795570	170.186646	1.000	350 M
OJP-ECS-200	-4.804429	170.200821	1.000	350 M
OJP-ECS-201	-4.813330	170.214966	1.000	350 M
OJP-ECS-202	-4.822269	170.229080	1.000	350 M
OJP-ECS-203	-4.831246	170.243179	1.000	350 M
OJP-ECS-204	-4.840267	170.257248	1.000	350 M
OJP-ECS-205	-4.849325	170.271286	1.000	350 M
OJP-ECS-206	-4.858426	170.285294	1.000	350 M
OJP-ECS-207	-4.867563	170.299286	1.000	350 M
OJP-ECS-208	-4.876742	170.313263	1.000	350 M
OJP-ECS-209	-4.885958	170.327194	1.000	350 M
OJP-ECS-210	-4.895216	170.341110	1.000	350 M
OJP-ECS-211	-4.904514	170.355011	1.000	350 M
OJP-ECS-212	-4.913849	170.368866	1.000	350 M
OJP-ECS-213	-4.923223	170.382706	1.000	350 M
OJP-ECS-214	-4.932639	170.396515	1.000	350 M
OJP-ECS-215	-4.942092	170.410294	1.000	350 M
OJP-ECS-216	-4.951586	170.424057	1.000	350 M
OJP-ECS-217	-4.961118	170.437790	1.000	350 M
OJP-ECS-218	-4.970688	170.451492	1.000	350 M
OJP-ECS-219	-4.980297	170.465164	1.000	350 M
OJP-ECS-220	-4.989945	170.478821	1.000	350 M
OJP-ECS-221	-4.999632	170.492447	1.000	350 M
OJP-ECS-222	-5.009357	170.506042	1.000	350 M
OJP-ECS-223	-5.019122	170.519608	1.000	350 M
OJP-ECS-224	-5.028924	170.533142	1.000	350 M
OJP-ECS-225	-5.038765	170.546661	1.000	350 M
OJP-ECS-226	-5.048643	170.560150	1.000	350 M
OJP-ECS-227	-5.058560	170.573608	1.000	350 M
OJP-ECS-228	-5.068514	170.587036	1.000	350 M
OJP-ECS-229	-5.078508	170.600433	1.000	350 M
OJP-ECS-230	-5.088539	170.613815	1.000	350 M
OJP-ECS-231	-5.098609	170.627167	1.000	350 M
OJP-ECS-232	-5.108715	170.640472	1.000	350 M

1982 United Nations Convention on the Law of the Sea

ECS Point	Latitude (DD)	Longitude (DD)	Dist. from previous(M)	Article 76 Provision Invoked
OJP-ECS-233	-5.118859	170.653778	1.000	350 M
OJP-ECS-234	-5.129042	170.667038	1.000	350 M
OJP-ECS-235	-5.139260	170.680267	1.000	350 M
OJP-ECS-236	-5.149517	170.693466	1.000	350 M
OJP-ECS-237	-5.159811	170.706650	1.000	350 M
OJP-ECS-238	-5.170142	170.719788	1.000	350 M
OJP-ECS-239	-5.180513	170.732910	1.000	350 M
OJP-ECS-240	-5.190917	170.746002	1.000	350 M
OJP-ECS-241	-5.201360	170.759064	1.000	350 M
OJP-ECS-242	-5.211838	170.772095	1.000	350 M
OJP-ECS-243	-5.222354	170.785095	1.000	350 M
OJP-ECS-244	-5.232886	170.798080	1.000	350 M
OJP-ECS-245	-5.243434	170.811066	1.000	350 M
OJP-ECS-246	-5.254017	170.824005	1.000	350 M
OJP-ECS-247	-5.264639	170.836929	1.000	350 M
OJP-ECS-248	-5.275294	170.849808	1.000	350 M
OJP-ECS-249	-5.285987	170.862671	1.000	350 M
OJP-ECS-250	-5.296719	170.875504	1.000	350 M
OJP-ECS-251	-5.307483	170.888306	1.000	350 M
OJP-ECS-252	-5.318286	170.901062	1.000	350 M
OJP-ECS-253	-5.329125	170.913803	1.000	350 M
OJP-ECS-254	-5.339997	170.926514	1.000	350 M
OJP-ECS-255	-5.350910	170.939194	1.000	350 M
OJP-ECS-256	-5.361856	170.951843	1.000	350 M
OJP-ECS-257	-5.372838	170.964447	1.000	350 M
OJP-ECS-258	-5.383854	170.977036	1.000	350 M
OJP-ECS-259	-5.394910	170.989594	1.000	350 M
OJP-ECS-260	-5.405997	171.002121	1.000	350 M
OJP-ECS-261	-5.417122	171.014603	1.000	350 M
OJP-ECS-262	-5.428281	171.027069	1.000	350 M
OJP-ECS-263	-5.439476	171.039490	1.000	350 M
OJP-ECS-264	-5.450706	171.051895	1.000	350 M
OJP-ECS-265	-5.461727	171.064484	1.000	350 M
OJP-ECS-266	-5.472775	171.077042	1.000	350 M
OJP-ECS-267	-5.483856	171.089569	1.000	350 M
OJP-ECS-268	-5.494973	171.102066	1.000	350 M
OJP-ECS-269	-5.506126	171.114532	1.000	350 M
OJP-ECS-270	-5.517313	171.126984	1.000	350 M
OJP-ECS-271	-5.528537	171.139389	1.000	350 M
OJP-ECS-272	-5.539795	171.151749	1.000	350 M



1982 United Nations Convention on the Law of the Sea

ECS Point	Latitude (DD)	Longitude (DD)	Dist. from previous(M)	Article 76 Provision Invoked
OJP-ECS-273	-5.551050	171.164139	1.000	350 M
OJP-ECS-274	-5.562339	171.176483	1.000	350 M
OJP-ECS-275	-5.573662	171.188797	1.000	350 M
OJP-ECS-276	-5.585018	171.201080	1.000	350 M
OJP-ECS-277	-5.596410	171.213333	1.000	350 M
OJP-ECS-278	-5.607838	171.225555	1.000	350 M
OJP-ECS-279	-6.168433	172.048981	59.536	350 M
OJP-ECS-280	-6.174658	172.064514	1.000	350 M
OJP-ECS-281	-6.180927	172.080032	1.000	350 M
OJP-ECS-282	-6.187238	172.095535	1.000	350 M
OJP-ECS-283	-6.193592	172.111023	1.000	350 M
OJP-ECS-284	-6.199992	172.126480	1.000	350 M
OJP-ECS-285	-6.206434	172.141922	1.000	350 M
OJP-ECS-286	-6.212920	172.157364	1.000	350 M
OJP-ECS-287	-6.219449	172.172760	1.000	350 M
OJP-ECS-288	-6.226023	172.188156	1.000	350 M
OJP-ECS-289	-6.232639	172.203537	1.000	350 M
OJP-ECS-290	-6.239299	172.218887	1.000	350 M
OJP-ECS-291	-6.246002	172.234222	1.000	350 M
OJP-ECS-292	-6.252748	172.249542	1.000	350 M
OJP-ECS-293	-6.259538	172.264847	1.000	350 M
OJP-ECS-294	-6.266371	172.280121	1.000	350 M
OJP-ECS-295	-6.273246	172.295380	1.000	350 M
OJP-ECS-296	-6.280165	172.310623	1.000	350 M
OJP-ECS-297	-6.287127	172.325851	1.000	350 M
OJP-ECS-298	-6.294131	172.341049	1.000	350 M
OJP-ECS-299	-6.301178	172.356232	1.000	350 M
OJP-ECS-300	-6.308268	172.371399	1.000	350 M
OJP-ECS-301	-6.315402	172.386536	1.000	350 M
OJP-ECS-302	-6.322576	172.401657	1.000	350 M
OJP-ECS-303	-6.329796	172.416763	1.000	350 M
OJP-ECS-304	-6.337056	172.431854	1.000	350 M
OJP-ECS-305	-6.344358	172.446915	1.000	350 M
OJP-ECS-306	-6.351703	172.461960	1.000	350 M
OJP-ECS-307	-6.359092	172.476974	1.000	350 M
OJP-ECS-308	-6.366522	172.491974	1.000	350 M
OJP-ECS-309	-6.373995	172.506958	1.000	350 M
OJP-ECS-310	-6.381509	172.521912	1.000	350 M
OJP-ECS-311	-6.389067	172.536850	1.000	350 M
OJP-ECS-312	-6.396665	172.551773	1.000	350 M

1982 United Nations Convention on the Law of the Sea

ECS Point	Latitude (DD)	Longitude (DD)	Dist. from previous(M)	Article 76 Provision Invoked
OJP-ECS-313	-6.404306	172.566666	1.000	350 M
OJP-ECS-314	-6.411990	172.581543	1.000	350 M
OJP-ECS-315	-6.419714	172.596405	1.000	350 M
OJP-ECS-316	-6.427482	172.611237	1.000	350 M
OJP-ECS-317	-6.435289	172.626038	1.000	350 M
OJP-ECS-318	-6.443140	172.640823	1.000	350 M
OJP-ECS-319	-6.451032	172.655594	1.000	350 M
OJP-ECS-320	-6.458966	172.670334	1.000	350 M
OJP-ECS-321	-6.466940	172.685059	1.000	350 M
OJP-ECS-322	-6.474957	172.699768	1.000	350 M
OJP-ECS-323	-6.483015	172.714447	1.000	350 M
OJP-ECS-324	-6.491114	172.729095	1.000	350 M
OJP-ECS-325	-6.499254	172.743729	1.000	350 M
OJP-ECS-326	-6.507437	172.758347	1.000	350 M
OJP-ECS-327	-6.515659	172.772919	1.000	350 M
OJP-ECS-328	-6.523922	172.787491	1.000	350 M
OJP-ECS-329	-6.532228	172.802032	1.000	350 M
OJP-ECS-330	-6.540574	172.816544	1.000	350 M
OJP-ECS-331	-6.548961	172.831039	1.000	350 M
OJP-ECS-332	-6.551024	172.834579	0.245	200 M Other State/350 M
<b>South</b>				
OJP-ECS-333	-6.790090	172.910828	0.000	200 M Other State/60 M
OJP-ECS-334	-6.945639	172.660016	17.616	60 M
OJP-ECS-335	-6.957584	172.651673	0.870	60 M
OJP-ECS-336	-6.964393	172.646795	0.500	60 M
OJP-ECS-337	-6.971161	172.641861	0.500	60 M
OJP-ECS-338	-6.977888	172.636871	0.500	60 M
OJP-ECS-339	-6.984573	172.631825	0.500	60 M
OJP-ECS-340	-6.991216	172.626724	0.500	60 M
OJP-ECS-341	-6.997816	172.621566	0.500	60 M
OJP-ECS-342	-7.004372	172.616354	0.500	60 M
OJP-ECS-343	-7.010885	172.611087	0.500	60 M
OJP-ECS-344	-7.017354	172.605766	0.500	60 M
OJP-ECS-345	-7.023778	172.600391	0.500	60 M
OJP-ECS-346	-7.030157	172.594963	0.500	60 M
OJP-ECS-347	-7.036491	172.589481	0.500	60 M
OJP-ECS-348	-7.042779	172.583946	0.500	60 M
OJP-ECS-349	-7.049020	172.578358	0.500	60 M
OJP-ECS-350	-7.055215	172.572719	0.500	60 M

1982 United Nations Convention on the Law of the Sea

ECS Point	Latitude (DD)	Longitude (DD)	Dist. from previous(M)	Article 76 Provision Invoked
OJP-ECS-351	-7.061362	172.567029	0.500	60 M
OJP-ECS-352	-7.067462	172.561287	0.500	60 M
OJP-ECS-353	-7.073514	172.555494	0.500	60 M
OJP-ECS-354	-7.079517	172.549650	0.500	60 M
OJP-ECS-355	-7.085472	172.543757	0.500	60 M
OJP-ECS-356	-7.091377	172.537814	0.500	60 M
OJP-ECS-357	-7.097232	172.531822	0.500	60 M
OJP-ECS-358	-7.103037	172.525781	0.500	60 M
OJP-ECS-359	-7.108791	172.519693	0.500	60 M
OJP-ECS-360	-7.114495	172.513555	0.500	60 M
OJP-ECS-361	-7.120147	172.507370	0.500	60 M
OJP-ECS-362	-7.125748	172.501138	0.500	60 M
OJP-ECS-363	-7.131296	172.494860	0.500	60 M
OJP-ECS-364	-7.136791	172.488535	0.500	60 M
OJP-ECS-365	-7.142235	172.482166	0.500	60 M
OJP-ECS-366	-7.147624	172.475749	0.500	60 M
OJP-ECS-367	-7.152960	172.469288	0.500	60 M
OJP-ECS-368	-7.158242	172.462783	0.500	60 M
OJP-ECS-369	-7.163469	172.456233	0.500	60 M
OJP-ECS-370	-7.168641	172.449642	0.500	60 M
OJP-ECS-371	-7.173759	172.443006	0.500	60 M
OJP-ECS-372	-7.178822	172.436328	0.500	60 M
OJP-ECS-373	-7.183827	172.429607	0.500	60 M
OJP-ECS-374	-7.188777	172.422845	0.500	60 M
OJP-ECS-375	-7.193670	172.416041	0.500	60 M
OJP-ECS-376	-7.198507	172.409198	0.500	60 M
OJP-ECS-377	-7.203286	172.402312	0.500	60 M
OJP-ECS-378	-7.208008	172.395388	0.500	60 M
OJP-ECS-379	-7.212672	172.388425	0.500	60 M
OJP-ECS-380	-7.217277	172.381423	0.500	60 M
OJP-ECS-381	-7.221824	172.374382	0.500	60 M
OJP-ECS-382	-7.226312	172.367305	0.500	60 M
OJP-ECS-383	-7.230740	172.360188	0.500	60 M
OJP-ECS-384	-7.235110	172.353036	0.500	60 M
OJP-ECS-385	-7.239420	172.345847	0.500	60 M
OJP-ECS-386	-7.243669	172.338623	0.500	60 M
OJP-ECS-387	-7.247859	172.331363	0.500	60 M
OJP-ECS-388	-7.251987	172.324068	0.500	60 M
OJP-ECS-389	-7.256055	172.316739	0.500	60 M
OJP-ECS-390	-7.260061	172.309375	0.500	60 M

1982 United Nations Convention on the Law of the Sea

ECS Point	Latitude (DD)	Longitude (DD)	Dist. from previous(M)	Article 76 Provision Invoked
OJP-ECS-391	-7.264006	172.301979	0.500	60 M
OJP-ECS-392	-7.267889	172.294550	0.500	60 M
OJP-ECS-393	-7.271710	172.287087	0.500	60 M
OJP-ECS-394	-7.275468	172.279595	0.500	60 M
OJP-ECS-395	-7.279164	172.272070	0.500	60 M
OJP-ECS-396	-7.282798	172.264515	0.500	60 M
OJP-ECS-397	-7.286368	172.256931	0.500	60 M
OJP-ECS-398	-7.289875	172.249316	0.500	60 M
OJP-ECS-399	-7.293317	172.241671	0.500	60 M
OJP-ECS-400	-7.296696	172.233999	0.500	60 M
OJP-ECS-401	-7.300012	172.226298	0.500	60 M
OJP-ECS-402	-7.303262	172.218571	0.500	60 M
OJP-ECS-403	-7.306448	172.210815	0.500	60 M
OJP-ECS-404	-7.309570	172.203033	0.500	60 M
OJP-ECS-405	-7.312627	172.195226	0.500	60 M
OJP-ECS-406	-7.315618	172.187392	0.500	60 M
OJP-ECS-407	-7.318544	172.179536	0.500	60 M
OJP-ECS-408	-7.321404	172.171654	0.500	60 M
OJP-ECS-409	-7.324199	172.163748	0.500	60 M
OJP-ECS-410	-7.326927	172.155819	0.500	60 M
OJP-ECS-411	-7.329589	172.147867	0.500	60 M
OJP-ECS-412	-7.332185	172.139894	0.500	60 M
OJP-ECS-413	-7.334715	172.131899	0.500	60 M
OJP-ECS-414	-7.337178	172.123884	0.500	60 M
OJP-ECS-415	-7.339573	172.115847	0.500	60 M
OJP-ECS-416	-7.341902	172.107792	0.500	60 M
OJP-ECS-417	-7.344163	172.099717	0.500	60 M
OJP-ECS-418	-7.346357	172.091623	0.500	60 M
OJP-ECS-419	-7.348484	172.083511	0.500	60 M
OJP-ECS-420	-7.350542	172.075381	0.500	60 M
OJP-ECS-421	-7.352533	172.067234	0.500	60 M
OJP-ECS-422	-7.354456	172.059071	0.500	60 M
OJP-ECS-423	-7.965404	171.268765	59.563	60 M
OJP-ECS-424	-8.842466	171.759624	59.960	200 M

## ANNEX 2

**Table listing the points defining the outer limit of the extended continental shelf (Degrees, Minutes, Seconds)**

ECS Point	Latitude (DMS)	Longitude (DMS)	Dist. from previous(M)	Article 76 Provision Invoked
<b>North</b>				
OJP-ECS-001	01° 59' 01.89" N	163° 42' 12.30" E	0.000	200 M
OJP-ECS-002	01° 11' 58.60" N	163° 04' 44.66" E	59.997	60 M
OJP-ECS-003	00° 25' 05.61" N	163° 05' 37.23" E	46.661	60 M Formula Line
OJP-ECS-004	00° 05' 53.46" S	163° 36' 33.14" E	43.713	200 M Intersection - Other State
<b>Central</b>				
OJP-ECS-005	03° 53' 56.49" S	167° 07' 59.17" E	0.000	200 M Other State/350 M
OJP-ECS-006	03° 53' 56.55" S	167° 08' 04.44" E	0.088	350 M
OJP-ECS-007	03° 53' 57.37" S	167° 09' 04.48" E	1.000	350 M
OJP-ECS-008	03° 53' 58.37" S	167° 10' 04.52" E	1.000	350 M
OJP-ECS-009	03° 53' 59.54" S	167° 11' 04.51" E	1.000	350 M
OJP-ECS-010	03° 54' 00.87" S	167° 12' 04.55" E	1.000	350 M
OJP-ECS-011	03° 54' 02.38" S	167° 13' 04.53" E	1.000	350 M
OJP-ECS-012	03° 54' 04.06" S	167° 14' 04.57" E	1.000	350 M
OJP-ECS-013	03° 54' 05.90" S	167° 15' 04.56" E	1.000	350 M
OJP-ECS-014	03° 54' 07.92" S	167° 16' 04.54" E	1.000	350 M
OJP-ECS-015	03° 54' 10.12" S	167° 17' 04.53" E	1.000	350 M
OJP-ECS-016	03° 54' 12.47" S	167° 18' 04.51" E	1.000	350 M
OJP-ECS-017	03° 54' 15.00" S	167° 19' 04.50" E	1.000	350 M
OJP-ECS-018	03° 54' 17.70" S	167° 20' 04.48" E	1.000	350 M
OJP-ECS-019	03° 54' 20.57" S	167° 21' 04.42" E	1.000	350 M
OJP-ECS-020	03° 54' 23.61" S	167° 22' 04.40" E	1.000	350 M
OJP-ECS-021	03° 54' 26.83" S	167° 23' 04.33" E	1.000	350 M
OJP-ECS-022	03° 54' 30.21" S	167° 24' 04.26" E	1.000	350 M
OJP-ECS-023	03° 54' 33.75" S	167° 25' 04.19" E	1.000	350 M
OJP-ECS-024	03° 54' 37.47" S	167° 26' 04.12" E	1.000	350 M
OJP-ECS-025	03° 54' 41.37" S	167° 27' 04.00" E	1.000	350 M
OJP-ECS-026	03° 54' 45.43" S	167° 28' 03.93" E	1.000	350 M
OJP-ECS-027	03° 54' 49.66" S	167° 29' 03.80" E	1.000	350 M
OJP-ECS-028	03° 54' 54.06" S	167° 30' 03.68" E	1.000	350 M
OJP-ECS-029	03° 54' 58.63" S	167° 31' 03.55" E	1.000	350 M
OJP-ECS-030	03° 55' 03.38" S	167° 32' 03.38" E	1.000	350 M

1982 United Nations Convention on the Law of the Sea

ECS Point	Latitude (DMS)	Longitude (DMS)	Dist. from previous(M)	Article 76 Provision Invoked
OJP-ECS-031	03° 55' 08.29" S	167° 33' 03.20" E	1.000	350 M
OJP-ECS-032	03° 55' 13.37" S	167° 34' 03.02" E	1.000	350 M
OJP-ECS-033	03° 55' 18.62" S	167° 35' 02.84" E	1.000	350 M
OJP-ECS-034	03° 55' 24.04" S	167° 36' 02.60" E	1.000	350 M
OJP-ECS-035	03° 55' 29.63" S	167° 37' 02.37" E	1.000	350 M
OJP-ECS-036	03° 55' 35.39" S	167° 38' 02.13" E	1.000	350 M
OJP-ECS-037	03° 55' 41.32" S	167° 39' 01.90" E	1.000	350 M
OJP-ECS-038	03° 55' 47.42" S	167° 40' 01.61" E	1.000	350 M
OJP-ECS-039	03° 55' 53.69" S	167° 41' 01.32" E	1.000	350 M
OJP-ECS-040	03° 56' 00.13" S	167° 42' 01.03" E	1.000	350 M
OJP-ECS-041	03° 56' 06.74" S	167° 43' 00.69" E	1.000	350 M
OJP-ECS-042	03° 56' 13.51" S	167° 44' 00.34" E	1.000	350 M
OJP-ECS-043	03° 56' 20.46" S	167° 45' 00.00" E	1.000	350 M
OJP-ECS-044	03° 56' 27.57" S	167° 45' 59.60" E	1.000	350 M
OJP-ECS-045	03° 56' 34.86" S	167° 46' 59.20" E	1.000	350 M
OJP-ECS-046	03° 56' 42.31" S	167° 47' 58.75" E	1.000	350 M
OJP-ECS-047	03° 56' 49.93" S	167° 48' 58.29" E	1.000	350 M
OJP-ECS-048	03° 56' 57.73" S	167° 49' 57.84" E	1.000	350 M
OJP-ECS-049	03° 57' 05.69" S	167° 50' 57.33" E	1.000	350 M
OJP-ECS-050	03° 57' 13.81" S	167° 51' 56.82" E	1.000	350 M
OJP-ECS-051	03° 57' 22.11" S	167° 52' 56.31" E	1.000	350 M
OJP-ECS-052	03° 57' 30.58" S	167° 53' 55.75" E	1.000	350 M
OJP-ECS-053	03° 57' 39.22" S	167° 54' 55.13" E	1.000	350 M
OJP-ECS-054	03° 57' 48.02" S	167° 55' 54.57" E	1.000	350 M
OJP-ECS-055	03° 57' 57.00" S	167° 56' 53.89" E	1.000	350 M
OJP-ECS-056	03° 58' 06.14" S	167° 57' 53.22" E	1.000	350 M
OJP-ECS-057	03° 58' 15.45" S	167° 58' 52.54" E	1.000	350 M
OJP-ECS-058	03° 58' 24.93" S	167° 59' 51.87" E	1.000	350 M
OJP-ECS-059	03° 58' 34.58" S	168° 00' 51.09" E	1.000	350 M
OJP-ECS-060	03° 58' 44.39" S	168° 01' 50.36" E	1.000	350 M
OJP-ECS-061	03° 58' 54.38" S	168° 02' 49.57" E	1.000	350 M
OJP-ECS-062	03° 59' 04.52" S	168° 03' 48.74" E	1.000	350 M
OJP-ECS-063	03° 59' 14.85" S	168° 04' 47.90" E	1.000	350 M
OJP-ECS-064	03° 59' 25.34" S	168° 05' 47.00" E	1.000	350 M
OJP-ECS-065	03° 59' 35.99" S	168° 06' 46.11" E	1.000	350 M
OJP-ECS-066	03° 59' 46.81" S	168° 07' 45.16" E	1.000	350 M
OJP-ECS-067	03° 59' 57.80" S	168° 08' 44.21" E	1.000	350 M
OJP-ECS-068	04° 00' 08.95" S	168° 09' 43.21" E	1.000	350 M
OJP-ECS-069	04° 00' 20.28" S	168° 10' 42.15" E	1.000	350 M
OJP-ECS-070	04° 00' 31.77" S	168° 11' 41.09" E	1.000	350 M

1982 United Nations Convention on the Law of the Sea

ECS Point	Latitude (DMS)	Longitude (DMS)	Dist. from previous(M)	Article 76 Provision Invoked
OJP-ECS-071	04° 00' 43.43" S	168° 12' 40.04" E	1.000	350 M
OJP-ECS-072	04° 00' 55.25" S	168° 13' 38.87" E	1.000	350 M
OJP-ECS-073	04° 01' 07.25" S	168° 14' 37.75" E	1.000	350 M
OJP-ECS-074	04° 01' 19.41" S	168° 15' 36.53" E	1.000	350 M
OJP-ECS-075	04° 01' 31.74" S	168° 16' 35.31" E	1.000	350 M
OJP-ECS-076	04° 01' 44.23" S	168° 17' 34.03" E	1.000	350 M
OJP-ECS-077	04° 01' 56.90" S	168° 18' 32.75" E	1.000	350 M
OJP-ECS-078	04° 02' 09.72" S	168° 19' 31.42" E	1.000	350 M
OJP-ECS-079	04° 02' 22.71" S	168° 20' 30.03" E	1.000	350 M
OJP-ECS-080	04° 02' 35.87" S	168° 21' 28.64" E	1.000	350 M
OJP-ECS-081	04° 02' 49.20" S	168° 22' 27.20" E	1.000	350 M
OJP-ECS-082	04° 03' 02.69" S	168° 23' 25.70" E	1.000	350 M
OJP-ECS-083	04° 03' 16.35" S	168° 24' 24.20" E	1.000	350 M
OJP-ECS-084	04° 03' 30.18" S	168° 25' 22.65" E	1.000	350 M
OJP-ECS-085	04° 03' 44.17" S	168° 26' 21.04" E	1.000	350 M
OJP-ECS-086	04° 03' 58.32" S	168° 27' 19.38" E	1.000	350 M
OJP-ECS-087	04° 04' 12.64" S	168° 28' 17.72" E	1.000	350 M
OJP-ECS-088	04° 04' 27.13" S	168° 29' 16.00" E	1.000	350 M
OJP-ECS-089	04° 04' 41.78" S	168° 30' 14.23" E	1.000	350 M
OJP-ECS-090	04° 04' 56.60" S	168° 31' 12.45" E	1.000	350 M
OJP-ECS-091	04° 05' 11.59" S	168° 32' 10.63" E	1.000	350 M
OJP-ECS-092	04° 05' 26.74" S	168° 33' 08.74" E	1.000	350 M
OJP-ECS-093	04° 05' 42.05" S	168° 34' 06.81" E	1.000	350 M
OJP-ECS-094	04° 05' 57.53" S	168° 35' 04.82" E	1.000	350 M
OJP-ECS-095	04° 06' 13.17" S	168° 36' 02.82" E	1.000	350 M
OJP-ECS-096	04° 06' 28.98" S	168° 37' 00.78" E	1.000	350 M
OJP-ECS-097	04° 06' 44.95" S	168° 37' 58.67" E	1.000	350 M
OJP-ECS-098	04° 07' 01.08" S	168° 38' 56.52" E	1.000	350 M
OJP-ECS-099	04° 07' 17.39" S	168° 39' 54.36" E	1.000	350 M
OJP-ECS-100	04° 07' 33.85" S	168° 40' 52.09" E	1.000	350 M
OJP-ECS-101	04° 07' 50.47" S	168° 41' 49.83" E	1.000	350 M
OJP-ECS-102	04° 08' 07.27" S	168° 42' 47.51" E	1.000	350 M
OJP-ECS-103	04° 08' 24.23" S	168° 43' 45.13" E	1.000	350 M
OJP-ECS-104	04° 08' 41.34" S	168° 44' 42.69" E	1.000	350 M
OJP-ECS-105	04° 08' 58.62" S	168° 45' 40.21" E	1.000	350 M
OJP-ECS-106	04° 09' 16.08" S	168° 46' 37.72" E	1.000	350 M
OJP-ECS-107	04° 09' 33.69" S	168° 47' 35.13" E	1.000	350 M
OJP-ECS-108	04° 09' 51.45" S	168° 48' 32.53" E	1.000	350 M
OJP-ECS-109	04° 10' 09.39" S	168° 49' 29.82" E	1.000	350 M
OJP-ECS-110	04° 10' 27.49" S	168° 50' 27.12" E	1.000	350 M

1982 United Nations Convention on the Law of the Sea

ECS Point	Latitude (DMS)	Longitude (DMS)	Dist. from previous(M)	Article 76 Provision Invoked
OJP-ECS-111	04° 10' 45.74" S	168° 51' 24.36" E	1.000	350 M
OJP-ECS-112	04° 11' 04.17" S	168° 52' 21.54" E	1.000	350 M
OJP-ECS-113	04° 11' 22.76" S	168° 53' 18.67" E	1.000	350 M
OJP-ECS-114	04° 11' 41.50" S	168° 54' 15.74" E	1.000	350 M
OJP-ECS-115	04° 12' 00.41" S	168° 55' 12.76" E	1.000	350 M
OJP-ECS-116	04° 12' 19.48" S	168° 56' 09.73" E	1.000	350 M
OJP-ECS-117	04° 12' 38.71" S	168° 57' 06.63" E	1.000	350 M
OJP-ECS-118	04° 12' 58.10" S	168° 58' 03.54" E	1.000	350 M
OJP-ECS-119	04° 13' 17.66" S	168° 59' 00.34" E	1.000	350 M
OJP-ECS-120	04° 13' 37.37" S	168° 59' 57.09" E	1.000	350 M
OJP-ECS-121	04° 13' 57.25" S	169° 00' 53.78" E	1.000	350 M
OJP-ECS-122	04° 14' 17.28" S	169° 01' 50.41" E	1.000	350 M
OJP-ECS-123	04° 14' 37.49" S	169° 02' 46.99" E	1.000	350 M
OJP-ECS-124	04° 14' 57.84" S	169° 03' 43.52" E	1.000	350 M
OJP-ECS-125	04° 15' 18.36" S	169° 04' 40.04" E	1.000	350 M
OJP-ECS-126	04° 15' 39.04" S	169° 05' 36.46" E	1.000	350 M
OJP-ECS-127	04° 15' 59.88" S	169° 06' 32.82" E	1.000	350 M
OJP-ECS-128	04° 16' 20.87" S	169° 07' 29.07" E	1.000	350 M
OJP-ECS-129	04° 16' 42.03" S	169° 08' 25.32" E	1.000	350 M
OJP-ECS-130	04° 17' 03.35" S	169° 09' 21.51" E	1.000	350 M
OJP-ECS-131	04° 17' 24.83" S	169° 10' 17.65" E	1.000	350 M
OJP-ECS-132	04° 17' 46.47" S	169° 11' 13.68" E	1.000	350 M
OJP-ECS-133	04° 18' 08.26" S	169° 12' 09.71" E	1.000	350 M
OJP-ECS-134	04° 18' 30.21" S	169° 13' 05.63" E	1.000	350 M
OJP-ECS-135	04° 18' 52.33" S	169° 14' 01.50" E	1.000	350 M
OJP-ECS-136	04° 19' 14.60" S	169° 14' 57.31" E	1.000	350 M
OJP-ECS-137	04° 19' 37.02" S	169° 15' 53.06" E	1.000	350 M
OJP-ECS-138	04° 19' 59.62" S	169° 16' 48.76" E	1.000	350 M
OJP-ECS-139	04° 20' 22.36" S	169° 17' 44.35" E	1.000	350 M
OJP-ECS-140	04° 20' 45.26" S	169° 18' 39.95" E	1.000	350 M
OJP-ECS-141	04° 21' 08.33" S	169° 19' 35.43" E	1.000	350 M
OJP-ECS-142	04° 21' 31.54" S	169° 20' 30.85" E	1.000	350 M
OJP-ECS-143	04° 21' 54.91" S	169° 21' 26.23" E	1.000	350 M
OJP-ECS-144	04° 22' 18.45" S	169° 22' 21.54" E	1.000	350 M
OJP-ECS-145	04° 22' 42.14" S	169° 23' 16.80" E	1.000	350 M
OJP-ECS-146	04° 23' 05.99" S	169° 24' 11.95" E	1.000	350 M
OJP-ECS-147	04° 23' 29.99" S	169° 25' 07.05" E	1.000	350 M
OJP-ECS-148	04° 23' 54.15" S	169° 26' 02.09" E	1.000	350 M
OJP-ECS-149	04° 24' 18.46" S	169° 26' 57.02" E	1.000	350 M
OJP-ECS-150	04° 24' 42.93" S	169° 27' 51.96" E	1.000	350 M



1982 United Nations Convention on the Law of the Sea

ECS Point	Latitude (DMS)	Longitude (DMS)	Dist. from previous(M)	Article 76 Provision Invoked
OJP-ECS-151	04° 25' 07.56" S	169° 28' 46.78" E	1.000	350 M
OJP-ECS-152	04° 25' 32.34" S	169° 29' 41.54" E	1.000	350 M
OJP-ECS-153	04° 25' 57.27" S	169° 30' 36.20" E	1.000	350 M
OJP-ECS-154	04° 26' 22.27" S	169° 31' 30.91" E	1.000	350 M
OJP-ECS-155	04° 26' 47.42" S	169° 32' 25.52" E	1.000	350 M
OJP-ECS-156	04° 27' 12.72" S	169° 33' 20.01" E	1.000	350 M
OJP-ECS-157	04° 27' 38.19" S	169° 34' 14.50" E	1.000	350 M
OJP-ECS-158	04° 28' 03.79" S	169° 35' 08.88" E	1.000	350 M
OJP-ECS-159	04° 28' 29.55" S	169° 36' 03.15" E	1.000	350 M
OJP-ECS-160	04° 28' 55.48" S	169° 36' 57.43" E	1.000	350 M
OJP-ECS-161	04° 29' 21.55" S	169° 37' 51.59" E	1.000	350 M
OJP-ECS-162	04° 29' 47.77" S	169° 38' 45.70" E	1.000	350 M
OJP-ECS-163	04° 30' 14.15" S	169° 39' 39.69" E	1.000	350 M
OJP-ECS-164	04° 30' 40.69" S	169° 40' 33.64" E	1.000	350 M
OJP-ECS-165	04° 31' 07.38" S	169° 41' 27.52" E	1.000	350 M
OJP-ECS-166	04° 31' 34.22" S	169° 42' 21.30" E	1.000	350 M
OJP-ECS-167	04° 32' 01.20" S	169° 43' 15.02" E	1.000	350 M
OJP-ECS-168	04° 32' 28.35" S	169° 44' 08.69" E	1.000	350 M
OJP-ECS-169	04° 32' 55.64" S	169° 45' 02.25" E	1.000	350 M
OJP-ECS-170	04° 33' 23.09" S	169° 45' 55.76" E	1.000	350 M
OJP-ECS-171	04° 33' 50.68" S	169° 46' 49.15" E	1.000	350 M
OJP-ECS-172	04° 34' 18.44" S	169° 47' 42.49" E	1.000	350 M
OJP-ECS-173	04° 34' 46.34" S	169° 48' 35.77" E	1.000	350 M
OJP-ECS-174	04° 35' 14.39" S	169° 49' 28.95" E	1.000	350 M
OJP-ECS-175	04° 35' 42.60" S	169° 50' 22.06" E	1.000	350 M
OJP-ECS-176	04° 36' 10.94" S	169° 51' 15.07" E	1.000	350 M
OJP-ECS-177	04° 36' 39.45" S	169° 52' 08.03" E	1.000	350 M
OJP-ECS-178	04° 37' 08.10" S	169° 53' 00.93" E	1.000	350 M
OJP-ECS-179	04° 37' 36.90" S	169° 53' 53.71" E	1.000	350 M
OJP-ECS-180	04° 38' 05.86" S	169° 54' 46.40" E	1.000	350 M
OJP-ECS-181	04° 38' 34.95" S	169° 55' 39.02" E	1.000	350 M
OJP-ECS-182	04° 39' 04.21" S	169° 56' 31.59" E	1.000	350 M
OJP-ECS-183	04° 39' 33.61" S	169° 57' 24.05" E	1.000	350 M
OJP-ECS-184	04° 40' 03.15" S	169° 58' 16.40" E	1.000	350 M
OJP-ECS-185	04° 40' 32.85" S	169° 59' 08.69" E	1.000	350 M
OJP-ECS-186	04° 41' 02.69" S	170° 00' 00.93" E	1.000	350 M
OJP-ECS-187	04° 41' 32.69" S	170° 00' 53.06" E	1.000	350 M
OJP-ECS-188	04° 42' 02.83" S	170° 01' 45.08" E	1.000	350 M
OJP-ECS-189	04° 42' 33.12" S	170° 02' 37.05" E	1.000	350 M
OJP-ECS-190	04° 43' 03.55" S	170° 03' 28.96" E	1.000	350 M

1982 United Nations Convention on the Law of the Sea

ECS Point	Latitude (DMS)	Longitude (DMS)	Dist. from previous(M)	Article 76 Provision Invoked
OJP-ECS-191	04° 43' 34.13" S	170° 04' 20.76" E	1.000	350 M
OJP-ECS-192	04° 44' 04.87" S	170° 05' 12.45" E	1.000	350 M
OJP-ECS-193	04° 44' 35.74" S	170° 06' 04.03" E	1.000	350 M
OJP-ECS-194	04° 45' 06.76" S	170° 06' 55.61" E	1.000	350 M
OJP-ECS-195	04° 45' 37.93" S	170° 07' 47.03" E	1.000	350 M
OJP-ECS-196	04° 46' 09.24" S	170° 08' 38.39" E	1.000	350 M
OJP-ECS-197	04° 46' 40.70" S	170° 09' 29.64" E	1.000	350 M
OJP-ECS-198	04° 47' 12.30" S	170° 10' 20.84" E	1.000	350 M
OJP-ECS-199	04° 47' 44.05" S	170° 11' 11.93" E	1.000	350 M
OJP-ECS-200	04° 48' 15.94" S	170° 12' 02.96" E	1.000	350 M
OJP-ECS-201	04° 48' 47.99" S	170° 12' 53.88" E	1.000	350 M
OJP-ECS-202	04° 49' 20.17" S	170° 13' 44.69" E	1.000	350 M
OJP-ECS-203	04° 49' 52.49" S	170° 14' 35.44" E	1.000	350 M
OJP-ECS-204	04° 50' 24.96" S	170° 15' 26.09" E	1.000	350 M
OJP-ECS-205	04° 50' 57.57" S	170° 16' 16.63" E	1.000	350 M
OJP-ECS-206	04° 51' 30.33" S	170° 17' 07.06" E	1.000	350 M
OJP-ECS-207	04° 52' 03.23" S	170° 17' 57.43" E	1.000	350 M
OJP-ECS-208	04° 52' 36.27" S	170° 18' 47.75" E	1.000	350 M
OJP-ECS-209	04° 53' 09.45" S	170° 19' 37.90" E	1.000	350 M
OJP-ECS-210	04° 53' 42.78" S	170° 20' 28.00" E	1.000	350 M
OJP-ECS-211	04° 54' 16.25" S	170° 21' 18.04" E	1.000	350 M
OJP-ECS-212	04° 54' 49.86" S	170° 22' 07.92" E	1.000	350 M
OJP-ECS-213	04° 55' 23.60" S	170° 22' 57.74" E	1.000	350 M
OJP-ECS-214	04° 55' 57.50" S	170° 23' 47.45" E	1.000	350 M
OJP-ECS-215	04° 56' 31.53" S	170° 24' 37.06" E	1.000	350 M
OJP-ECS-216	04° 57' 05.71" S	170° 25' 26.61" E	1.000	350 M
OJP-ECS-217	04° 57' 40.02" S	170° 26' 16.04" E	1.000	350 M
OJP-ECS-218	04° 58' 14.48" S	170° 27' 05.37" E	1.000	350 M
OJP-ECS-219	04° 58' 49.07" S	170° 27' 54.59" E	1.000	350 M
OJP-ECS-220	04° 59' 23.80" S	170° 28' 43.76" E	1.000	350 M
OJP-ECS-221	04° 59' 58.68" S	170° 29' 32.81" E	1.000	350 M
OJP-ECS-222	05° 00' 33.69" S	170° 30' 21.75" E	1.000	350 M
OJP-ECS-223	05° 01' 08.84" S	170° 31' 10.59" E	1.000	350 M
OJP-ECS-224	05° 01' 44.13" S	170° 31' 59.31" E	1.000	350 M
OJP-ECS-225	05° 02' 19.55" S	170° 32' 47.98" E	1.000	350 M
OJP-ECS-226	05° 02' 55.11" S	170° 33' 36.54" E	1.000	350 M
OJP-ECS-227	05° 03' 30.82" S	170° 34' 24.99" E	1.000	350 M
OJP-ECS-228	05° 04' 06.65" S	170° 35' 13.33" E	1.000	350 M
OJP-ECS-229	05° 04' 42.63" S	170° 36' 01.56" E	1.000	350 M
OJP-ECS-230	05° 05' 18.74" S	170° 36' 49.73" E	1.000	350 M

1982 United Nations Convention on the Law of the Sea

ECS Point	Latitude (DMS)	Longitude (DMS)	Dist. from previous(M)	Article 76 Provision Invoked
OJP-ECS-231	05° 05' 54.99" S	170° 37' 37.80" E	1.000	350 M
OJP-ECS-232	05° 06' 31.37" S	170° 38' 25.70" E	1.000	350 M
OJP-ECS-233	05° 07' 07.89" S	170° 39' 13.60" E	1.000	350 M
OJP-ECS-234	05° 07' 44.55" S	170° 40' 01.34" E	1.000	350 M
OJP-ECS-235	05° 08' 21.34" S	170° 40' 48.96" E	1.000	350 M
OJP-ECS-236	05° 08' 58.26" S	170° 41' 36.48" E	1.000	350 M
OJP-ECS-237	05° 09' 35.32" S	170° 42' 23.94" E	1.000	350 M
OJP-ECS-238	05° 10' 12.51" S	170° 43' 11.24" E	1.000	350 M
OJP-ECS-239	05° 10' 49.85" S	170° 43' 58.48" E	1.000	350 M
OJP-ECS-240	05° 11' 27.30" S	170° 44' 45.61" E	1.000	350 M
OJP-ECS-241	05° 12' 04.90" S	170° 45' 32.63" E	1.000	350 M
OJP-ECS-242	05° 12' 42.62" S	170° 46' 19.54" E	1.000	350 M
OJP-ECS-243	05° 13' 20.47" S	170° 47' 06.34" E	1.000	350 M
OJP-ECS-244	05° 13' 58.39" S	170° 47' 53.09" E	1.000	350 M
OJP-ECS-245	05° 14' 36.36" S	170° 48' 39.84" E	1.000	350 M
OJP-ECS-246	05° 15' 14.46" S	170° 49' 26.42" E	1.000	350 M
OJP-ECS-247	05° 15' 52.70" S	170° 50' 12.94" E	1.000	350 M
OJP-ECS-248	05° 16' 31.06" S	170° 50' 59.31" E	1.000	350 M
OJP-ECS-249	05° 17' 09.55" S	170° 51' 45.62" E	1.000	350 M
OJP-ECS-250	05° 17' 48.19" S	170° 52' 31.81" E	1.000	350 M
OJP-ECS-251	05° 18' 26.94" S	170° 53' 17.90" E	1.000	350 M
OJP-ECS-252	05° 19' 05.83" S	170° 54' 03.82" E	1.000	350 M
OJP-ECS-253	05° 19' 44.85" S	170° 54' 49.69" E	1.000	350 M
OJP-ECS-254	05° 20' 23.99" S	170° 55' 35.45" E	1.000	350 M
OJP-ECS-255	05° 21' 03.28" S	170° 56' 21.10" E	1.000	350 M
OJP-ECS-256	05° 21' 42.68" S	170° 57' 06.63" E	1.000	350 M
OJP-ECS-257	05° 22' 22.22" S	170° 57' 52.01" E	1.000	350 M
OJP-ECS-258	05° 23' 01.87" S	170° 58' 37.33" E	1.000	350 M
OJP-ECS-259	05° 23' 41.68" S	170° 59' 22.54" E	1.000	350 M
OJP-ECS-260	05° 24' 21.59" S	171° 00' 07.64" E	1.000	350 M
OJP-ECS-261	05° 25' 01.64" S	171° 00' 52.57" E	1.000	350 M
OJP-ECS-262	05° 25' 41.81" S	171° 01' 37.45" E	1.000	350 M
OJP-ECS-263	05° 26' 22.11" S	171° 02' 22.16" E	1.000	350 M
OJP-ECS-264	05° 27' 02.54" S	171° 03' 06.82" E	1.000	350 M
OJP-ECS-265	05° 27' 42.22" S	171° 03' 52.14" E	1.000	350 M
OJP-ECS-266	05° 28' 21.99" S	171° 04' 37.35" E	1.000	350 M
OJP-ECS-267	05° 29' 01.88" S	171° 05' 22.45" E	1.000	350 M
OJP-ECS-268	05° 29' 41.90" S	171° 06' 07.44" E	1.000	350 M
OJP-ECS-269	05° 30' 22.05" S	171° 06' 52.32" E	1.000	350 M
OJP-ECS-270	05° 31' 02.33" S	171° 07' 37.14" E	1.000	350 M

1982 United Nations Convention on the Law of the Sea

ECS Point	Latitude (DMS)	Longitude (DMS)	Dist. from previous(M)	Article 76 Provision Invoked
OJP-ECS-271	05° 31' 42.73" S	171° 08' 21.80" E	1.000	350 M
OJP-ECS-272	05° 32' 23.26" S	171° 09' 06.30" E	1.000	350 M
OJP-ECS-273	05° 33' 03.78" S	171° 09' 50.90" E	1.000	350 M
OJP-ECS-274	05° 33' 44.42" S	171° 10' 35.34" E	1.000	350 M
OJP-ECS-275	05° 34' 25.18" S	171° 11' 19.67" E	1.000	350 M
OJP-ECS-276	05° 35' 06.06" S	171° 12' 03.89" E	1.000	350 M
OJP-ECS-277	05° 35' 47.08" S	171° 12' 48.00" E	1.000	350 M
OJP-ECS-278	05° 36' 28.22" S	171° 13' 32.00" E	1.000	350 M
OJP-ECS-279	06° 10' 06.36" S	172° 02' 56.33" E	59.536	350 M
OJP-ECS-280	06° 10' 28.77" S	172° 03' 52.25" E	1.000	350 M
OJP-ECS-281	06° 10' 51.34" S	172° 04' 48.12" E	1.000	350 M
OJP-ECS-282	06° 11' 14.06" S	172° 05' 43.93" E	1.000	350 M
OJP-ECS-283	06° 11' 36.93" S	172° 06' 39.68" E	1.000	350 M
OJP-ECS-284	06° 11' 59.97" S	172° 07' 35.33" E	1.000	350 M
OJP-ECS-285	06° 12' 23.16" S	172° 08' 30.92" E	1.000	350 M
OJP-ECS-286	06° 12' 46.51" S	172° 09' 26.51" E	1.000	350 M
OJP-ECS-287	06° 13' 10.02" S	172° 10' 21.94" E	1.000	350 M
OJP-ECS-288	06° 13' 33.68" S	172° 11' 17.36" E	1.000	350 M
OJP-ECS-289	06° 13' 57.50" S	172° 12' 12.73" E	1.000	350 M
OJP-ECS-290	06° 14' 21.48" S	172° 13' 07.99" E	1.000	350 M
OJP-ECS-291	06° 14' 45.61" S	172° 14' 03.20" E	1.000	350 M
OJP-ECS-292	06° 15' 09.89" S	172° 14' 58.35" E	1.000	350 M
OJP-ECS-293	06° 15' 34.34" S	172° 15' 53.45" E	1.000	350 M
OJP-ECS-294	06° 15' 58.94" S	172° 16' 48.44" E	1.000	350 M
OJP-ECS-295	06° 16' 23.69" S	172° 17' 43.37" E	1.000	350 M
OJP-ECS-296	06° 16' 48.59" S	172° 18' 38.24" E	1.000	350 M
OJP-ECS-297	06° 17' 13.66" S	172° 19' 33.06" E	1.000	350 M
OJP-ECS-298	06° 17' 38.87" S	172° 20' 27.78" E	1.000	350 M
OJP-ECS-299	06° 18' 04.24" S	172° 21' 22.44" E	1.000	350 M
OJP-ECS-300	06° 18' 29.76" S	172° 22' 17.04" E	1.000	350 M
OJP-ECS-301	06° 18' 55.45" S	172° 23' 11.53" E	1.000	350 M
OJP-ECS-302	06° 19' 21.27" S	172° 24' 05.97" E	1.000	350 M
OJP-ECS-303	06° 19' 47.27" S	172° 25' 00.35" E	1.000	350 M
OJP-ECS-304	06° 20' 13.40" S	172° 25' 54.67" E	1.000	350 M
OJP-ECS-305	06° 20' 39.69" S	172° 26' 48.89" E	1.000	350 M
OJP-ECS-306	06° 21' 06.13" S	172° 27' 43.06" E	1.000	350 M
OJP-ECS-307	06° 21' 32.73" S	172° 28' 37.11" E	1.000	350 M
OJP-ECS-308	06° 21' 59.48" S	172° 29' 31.11" E	1.000	350 M
OJP-ECS-309	06° 22' 26.38" S	172° 30' 25.05" E	1.000	350 M
OJP-ECS-310	06° 22' 53.43" S	172° 31' 18.88" E	1.000	350 M

1982 United Nations Convention on the Law of the Sea

ECS Point	Latitude (DMS)	Longitude (DMS)	Dist. from previous(M)	Article 76 Provision Invoked
OJP-ECS-311	06° 23' 20.64" S	172° 32' 12.66" E	1.000	350 M
OJP-ECS-312	06° 23' 47.99" S	172° 33' 06.38" E	1.000	350 M
OJP-ECS-313	06° 24' 15.50" S	172° 34' 00.00" E	1.000	350 M
OJP-ECS-314	06° 24' 43.16" S	172° 34' 53.55" E	1.000	350 M
OJP-ECS-315	06° 25' 10.97" S	172° 35' 47.06" E	1.000	350 M
OJP-ECS-316	06° 25' 38.94" S	172° 36' 40.45" E	1.000	350 M
OJP-ECS-317	06° 26' 07.04" S	172° 37' 33.74" E	1.000	350 M
OJP-ECS-318	06° 26' 35.30" S	172° 38' 26.96" E	1.000	350 M
OJP-ECS-319	06° 27' 03.72" S	172° 39' 20.14" E	1.000	350 M
OJP-ECS-320	06° 27' 32.28" S	172° 40' 13.20" E	1.000	350 M
OJP-ECS-321	06° 28' 00.98" S	172° 41' 06.21" E	1.000	350 M
OJP-ECS-322	06° 28' 29.85" S	172° 41' 59.16" E	1.000	350 M
OJP-ECS-323	06° 28' 58.85" S	172° 42' 52.01" E	1.000	350 M
OJP-ECS-324	06° 29' 28.01" S	172° 43' 44.74" E	1.000	350 M
OJP-ECS-325	06° 29' 57.31" S	172° 44' 37.42" E	1.000	350 M
OJP-ECS-326	06° 30' 26.77" S	172° 45' 30.05" E	1.000	350 M
OJP-ECS-327	06° 30' 56.37" S	172° 46' 22.51" E	1.000	350 M
OJP-ECS-328	06° 31' 26.12" S	172° 47' 14.97" E	1.000	350 M
OJP-ECS-329	06° 31' 56.02" S	172° 48' 07.32" E	1.000	350 M
OJP-ECS-330	06° 32' 26.07" S	172° 48' 59.56" E	1.000	350 M
OJP-ECS-331	06° 32' 56.26" S	172° 49' 51.74" E	1.000	350 M
OJP-ECS-332	06° 33' 03.69" S	172° 50' 04.48" E	0.245	200 M Other State/350 M
<b>South</b>				
OJP-ECS-333	06° 47' 24.32" S	172° 54' 38.98" E	0.000	200 M Other State/60 M
OJP-ECS-334	06° 56' 44.30" S	172° 39' 36.06" E	17.616	60 M
OJP-ECS-335	06° 57' 27.30" S	172° 39' 06.02" E	0.870	60 M
OJP-ECS-336	06° 57' 51.81" S	172° 38' 48.46" E	0.500	60 M
OJP-ECS-337	06° 58' 16.18" S	172° 38' 30.70" E	0.500	60 M
OJP-ECS-338	06° 58' 40.40" S	172° 38' 12.74" E	0.500	60 M
OJP-ECS-339	06° 59' 04.46" S	172° 37' 54.57" E	0.500	60 M
OJP-ECS-340	06° 59' 28.38" S	172° 37' 36.20" E	0.500	60 M
OJP-ECS-341	06° 59' 52.14" S	172° 37' 17.64" E	0.500	60 M
OJP-ECS-342	07° 00' 15.74" S	172° 36' 58.87" E	0.500	60 M
OJP-ECS-343	07° 00' 39.19" S	172° 36' 39.91" E	0.500	60 M
OJP-ECS-344	07° 01' 02.47" S	172° 36' 20.76" E	0.500	60 M
OJP-ECS-345	07° 01' 25.60" S	172° 36' 01.41" E	0.500	60 M
OJP-ECS-346	07° 01' 48.56" S	172° 35' 41.87" E	0.500	60 M
OJP-ECS-347	07° 02' 11.37" S	172° 35' 22.13" E	0.500	60 M

1982 United Nations Convention on the Law of the Sea

ECS Point	Latitude (DMS)	Longitude (DMS)	Dist. from previous(M)	Article 76 Provision Invoked
OJP-ECS-348	07° 02' 34.00" S	172° 35' 02.20" E	0.500	60 M
OJP-ECS-349	07° 02' 56.47" S	172° 34' 42.09" E	0.500	60 M
OJP-ECS-350	07° 03' 18.77" S	172° 34' 21.79" E	0.500	60 M
OJP-ECS-351	07° 03' 40.90" S	172° 34' 01.31" E	0.500	60 M
OJP-ECS-352	07° 04' 02.86" S	172° 33' 40.63" E	0.500	60 M
OJP-ECS-353	07° 04' 24.65" S	172° 33' 19.78" E	0.500	60 M
OJP-ECS-354	07° 04' 46.26" S	172° 32' 58.74" E	0.500	60 M
OJP-ECS-355	07° 05' 07.70" S	172° 32' 37.53" E	0.500	60 M
OJP-ECS-356	07° 05' 28.96" S	172° 32' 16.13" E	0.500	60 M
OJP-ECS-357	07° 05' 50.03" S	172° 31' 54.56" E	0.500	60 M
OJP-ECS-358	07° 06' 10.93" S	172° 31' 32.81" E	0.500	60 M
OJP-ECS-359	07° 06' 31.65" S	172° 31' 10.89" E	0.500	60 M
OJP-ECS-360	07° 06' 52.18" S	172° 30' 48.80" E	0.500	60 M
OJP-ECS-361	07° 07' 12.53" S	172° 30' 26.53" E	0.500	60 M
OJP-ECS-362	07° 07' 32.69" S	172° 30' 04.10" E	0.500	60 M
OJP-ECS-363	07° 07' 52.66" S	172° 29' 41.50" E	0.500	60 M
OJP-ECS-364	07° 08' 12.45" S	172° 29' 18.72" E	0.500	60 M
OJP-ECS-365	07° 08' 32.05" S	172° 28' 55.80" E	0.500	60 M
OJP-ECS-366	07° 08' 51.45" S	172° 28' 32.70" E	0.500	60 M
OJP-ECS-367	07° 09' 10.66" S	172° 28' 09.44" E	0.500	60 M
OJP-ECS-368	07° 09' 29.67" S	172° 27' 46.02" E	0.500	60 M
OJP-ECS-369	07° 09' 48.49" S	172° 27' 22.44" E	0.500	60 M
OJP-ECS-370	07° 10' 07.11" S	172° 26' 58.71" E	0.500	60 M
OJP-ECS-371	07° 10' 25.53" S	172° 26' 34.82" E	0.500	60 M
OJP-ECS-372	07° 10' 43.76" S	172° 26' 10.78" E	0.500	60 M
OJP-ECS-373	07° 11' 01.78" S	172° 25' 46.59" E	0.500	60 M
OJP-ECS-374	07° 11' 19.60" S	172° 25' 22.24" E	0.500	60 M
OJP-ECS-375	07° 11' 37.21" S	172° 24' 57.75" E	0.500	60 M
OJP-ECS-376	07° 11' 54.63" S	172° 24' 33.11" E	0.500	60 M
OJP-ECS-377	07° 12' 11.83" S	172° 24' 08.32" E	0.500	60 M
OJP-ECS-378	07° 12' 28.83" S	172° 23' 43.40" E	0.500	60 M
OJP-ECS-379	07° 12' 45.62" S	172° 23' 18.33" E	0.500	60 M
OJP-ECS-380	07° 13' 02.20" S	172° 22' 53.12" E	0.500	60 M
OJP-ECS-381	07° 13' 18.57" S	172° 22' 27.78" E	0.500	60 M
OJP-ECS-382	07° 13' 34.72" S	172° 22' 02.30" E	0.500	60 M
OJP-ECS-383	07° 13' 50.67" S	172° 21' 36.68" E	0.500	60 M
OJP-ECS-384	07° 14' 06.40" S	172° 21' 10.93" E	0.500	60 M
OJP-ECS-385	07° 14' 21.91" S	172° 20' 45.05" E	0.500	60 M
OJP-ECS-386	07° 14' 37.21" S	172° 20' 19.04" E	0.500	60 M
OJP-ECS-387	07° 14' 52.29" S	172° 19' 52.91" E	0.500	60 M

1982 United Nations Convention on the Law of the Sea

ECS Point	Latitude (DMS)	Longitude (DMS)	Dist. from previous(M)	Article 76 Provision Invoked
OJP-ECS-388	07° 15' 07.15" S	172° 19' 26.64" E	0.500	60 M
OJP-ECS-389	07° 15' 21.80" S	172° 19' 00.26" E	0.500	60 M
OJP-ECS-390	07° 15' 36.22" S	172° 18' 33.75" E	0.500	60 M
OJP-ECS-391	07° 15' 50.42" S	172° 18' 07.13" E	0.500	60 M
OJP-ECS-392	07° 16' 04.40" S	172° 17' 40.38" E	0.500	60 M
OJP-ECS-393	07° 16' 18.16" S	172° 17' 13.51" E	0.500	60 M
OJP-ECS-394	07° 16' 31.69" S	172° 16' 46.54" E	0.500	60 M
OJP-ECS-395	07° 16' 44.99" S	172° 16' 19.45" E	0.500	60 M
OJP-ECS-396	07° 16' 58.07" S	172° 15' 52.25" E	0.500	60 M
OJP-ECS-397	07° 17' 10.92" S	172° 15' 24.95" E	0.500	60 M
OJP-ECS-398	07° 17' 23.55" S	172° 14' 57.54" E	0.500	60 M
OJP-ECS-399	07° 17' 35.94" S	172° 14' 30.02" E	0.500	60 M
OJP-ECS-400	07° 17' 48.11" S	172° 14' 02.40" E	0.500	60 M
OJP-ECS-401	07° 18' 00.04" S	172° 13' 34.67" E	0.500	60 M
OJP-ECS-402	07° 18' 11.74" S	172° 13' 06.85" E	0.500	60 M
OJP-ECS-403	07° 18' 23.21" S	172° 12' 38.93" E	0.500	60 M
OJP-ECS-404	07° 18' 34.45" S	172° 12' 10.92" E	0.500	60 M
OJP-ECS-405	07° 18' 45.46" S	172° 11' 42.81" E	0.500	60 M
OJP-ECS-406	07° 18' 56.23" S	172° 11' 14.61" E	0.500	60 M
OJP-ECS-407	07° 19' 06.76" S	172° 10' 46.33" E	0.500	60 M
OJP-ECS-408	07° 19' 17.06" S	172° 10' 17.95" E	0.500	60 M
OJP-ECS-409	07° 19' 27.12" S	172° 09' 49.49" E	0.500	60 M
OJP-ECS-410	07° 19' 36.94" S	172° 09' 20.95" E	0.500	60 M
OJP-ECS-411	07° 19' 46.52" S	172° 08' 52.32" E	0.500	60 M
OJP-ECS-412	07° 19' 55.87" S	172° 08' 23.62" E	0.500	60 M
OJP-ECS-413	07° 20' 04.97" S	172° 07' 54.84" E	0.500	60 M
OJP-ECS-414	07° 20' 13.84" S	172° 07' 25.98" E	0.500	60 M
OJP-ECS-415	07° 20' 22.46" S	172° 06' 57.05" E	0.500	60 M
OJP-ECS-416	07° 20' 30.85" S	172° 06' 28.05" E	0.500	60 M
OJP-ECS-417	07° 20' 38.99" S	172° 05' 58.98" E	0.500	60 M
OJP-ECS-418	07° 20' 46.88" S	172° 05' 29.84" E	0.500	60 M
OJP-ECS-419	07° 20' 54.54" S	172° 05' 00.64" E	0.500	60 M
OJP-ECS-420	07° 21' 01.95" S	172° 04' 31.37" E	0.500	60 M
OJP-ECS-421	07° 21' 09.12" S	172° 04' 02.04" E	0.500	60 M
OJP-ECS-422	07° 21' 16.04" S	172° 03' 32.66" E	0.500	60 M
OJP-ECS-423	07° 57' 55.45" S	171° 16' 07.55" E	59.563	60 M
OJP-ECS-424	08° 50' 32.88" S	171° 45' 34.65" E	59.960	200 M







PAPUA NEW GUINEA

