

# Framing Indicators for the Waste and Pollution Sector: *Key Considerations*

Clean Pacific Round Table 2018

Aug 22, 2018

PIFS, Main Conference Room A

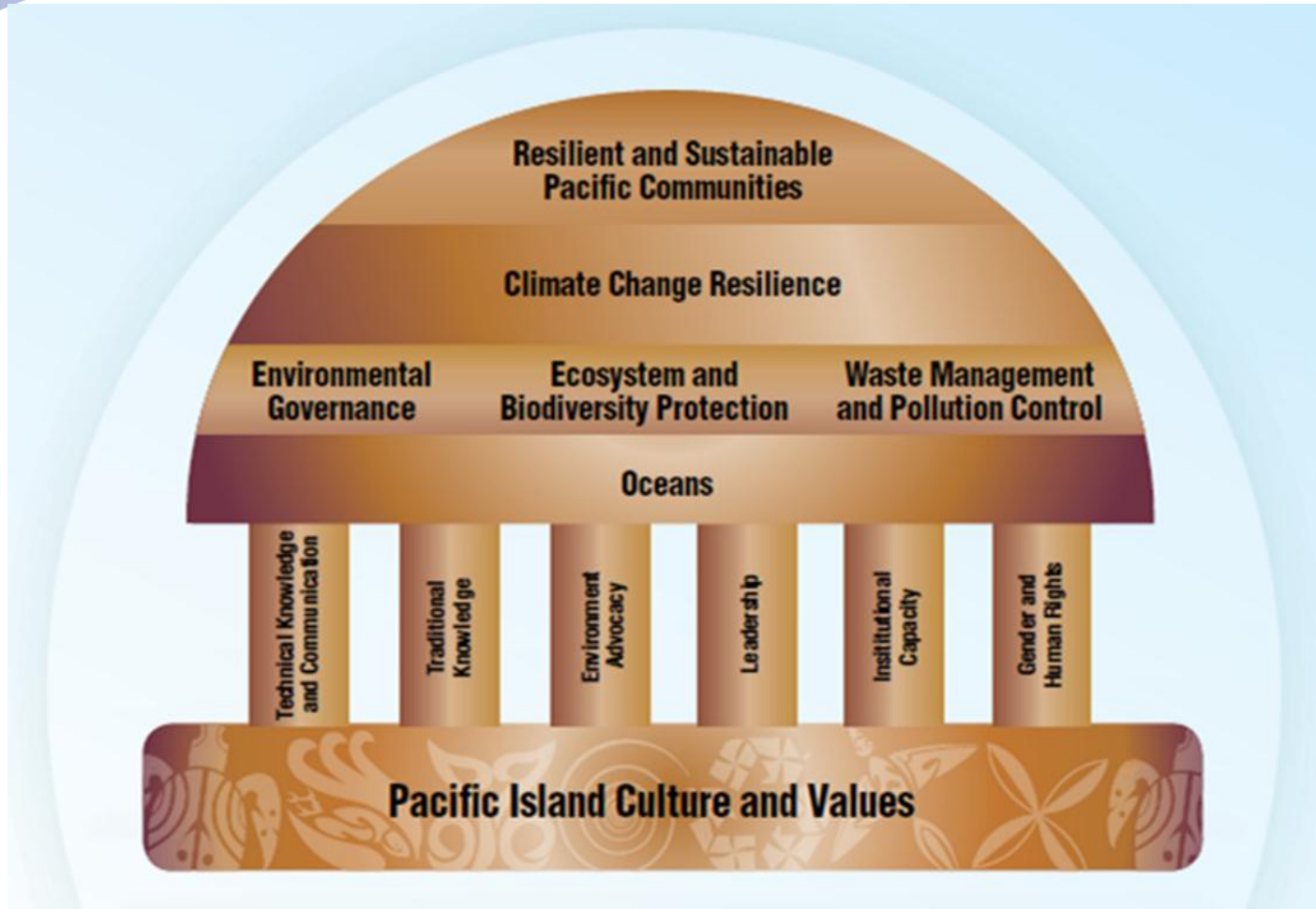
Rebecca V Polestico  
M&E Adviser, SPREP



## **Task(s)**

- *Definition of Waste and Pollution in the country context and of Sustainable Development*
- *Theory of Change*
- *Thematic Priority Indicators*
- *Integrated Waste and Pollution Sector Monitoring System*





## Mandate

**“To promote cooperation  
in the Pacific Region  
and provide assistance  
in order  
to protect and improve  
its environment and to ensure  
sustainable development for present  
and future generations”**



## Definition and context of Waste and Sustainable Development

- **Waste** as a product that is no longer suited for its intended use. It may be worn out or may be an unwanted by-product of a process (Office of the Auditor-General Of Papua New Guinea,2010).
- **Waste** to include litter, garbage, refuse, excavated and dredged spoil, and other discarded materials including any derelict motor vehicles or parts, waste materials from residential, commercial or industrial facility and from community activities (excluding religious offerings), solid or dissolved material in domestic sewage or other substances in water sources, such as silt, dissolved or suspended solids in industrial wastewater effluent, dissolved materials in irrigation return flows or other common water pollutants (Fiji, 2005).
- **Waste** as garbage, household refuse, rubbish, scraps and trade wastes; and any other matter or thing determined from time to time by an approved Authority to be waste in the waste management service area under its control while hazardous waste includes any wastes which are, or which have the potential to be, toxic or poisonous, or which may cause injury or damage to human health or the environment. (Waste Management Act 2005, Tonga).





## Definition and context of Waste and Sustainable Development

- *Waste is any wastes which are, or which have the potential to be, toxic or poisonous, or which may cause injury or damage to human health or the environment; any specific substance, object or thing determined under section 6 to be a hazardous waste; and any other matter or thing deemed under international conventions to be hazardous wastes or to have the characteristics of hazardous wastes (Samoa, 2005)*
- *Solid waste as any solid or semi-solid garbage, refuse or rubbish, sludge and other discarded material including any contained liquid or gaseous material remaining from industrial, commercial, institutional activities and residential or community activities (SPREP, 2005)*
- *Hazardous waste is a waste with properties that make it dangerous, or capable of having a harmful effect on human health and the environment. These wastes require special measures in handling and disposal due to their hazardous properties (e.g. toxicity, ecotoxicity, carcinogenicity, infectiousness, flammability, chemical reactivity) and are generally not suitable for direct disposal in a landfill (SPRE, 2005)*



## Definition and context of Waste and Pollution on Sustainable Development

- Waste is a product of many human activities and has risen with increasing populations with the demand for more products.
- Waste therefore needs to be managed responsibly.
- The concept of sustainable development promotes waste minimisation and supports the use of renewable material and recycling where possible.
- The use of waste in general and the handling of hazardous waste, for example radioactive waste, has been regulated by a number of groups including the European Union and other countries

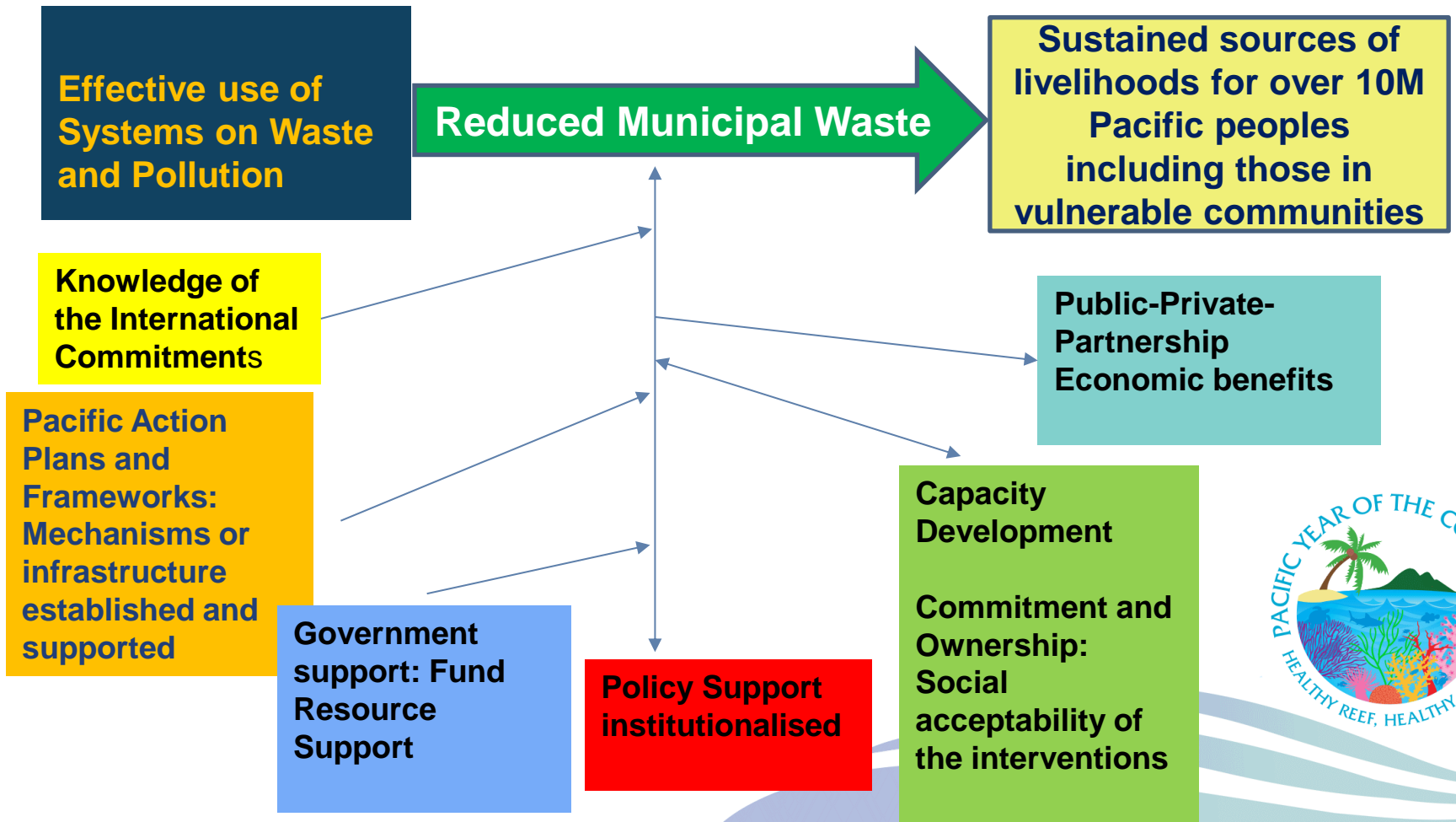


**Theory of Change  
Pathway to “Making a Difference”  
Causal Dependence**





## Theory of Change or Outcome Pathway Routes and Assumption(s)



## **Global Targets**

### **SDGs: 11, 14 and 14**

**11.6.1 Proportion of urban solid waste regularly collected and with adequate final discharge out of total urban solid waste generated, by cities**

**12.4.1 Number of parties to international multilateral environmental agreements on hazardous waste, and other chemicals that meet their commitments and obligations in transmitting information as required by each relevant agreement**

**12.4.2 Hazardous waste generated per capita and proportion of hazardous waste treated, by type of treatment**

**12.5.1 National recycling rate, tons of material recycled**

**14.4.1 Proportion of fish stocks within biologically sustainable levels**



## Thematic Priority Indicators Waste and Pollution: Pacific Context (Cleaner Pacific 2016-2025)

- Per capita generation of municipal solid waste (kg/person/day) -1.3 kg/person/day
- Waste capture rate (= amount collected / amount generated) (%)
- No. of port waste reception facilities
- No of pollution incidents
- Quantity of used oil stockpiles (m<sup>3</sup> ) (to 0 cubic meter)
- Waste recycling rate (=amount recycled, reused, returned / amount recyclable) (%)  
– from 47% to 75%
- Waste Collection Coverage
- Waste recycling rate (=amount recycled, reused, returned / amount recyclable) (%)
- No. of national or municipal composting programmes
- No. of national EPR programmes for used oil 2 (NC, FP) 3 10 No. of national
- No. of national EPR programmes for e-waste



## Thematic Priority Indicators Waste and Pollution: Pacific Context (Cleaner Pacific 2016-2025)

- No. of national or state user-pays systems for waste collection
- Waste collection coverage (% of population)
- No. of temporary, unregulated and open dumps
- Quantity of asbestos stockpiles ( m3 )
- Urban sewage treated to secondary standards (%)
- No. of water and environmental quality monitoring programmes
- No. of national chemicals and pollution inventories



**Identifying  
Priority  
Thematic  
Indicators**

**Integrated  
Waste and  
Pollution  
Sector  
Results  
Framework  
by Country**

**Integrate to  
National  
Strategy  
Plan**

**International  
Commitments  
SDG 13  
SDG 11  
SDG 14**

**National Policy  
Regional Policy**

**Waste Management and Pollution Sector  
KEY CONSIDERATIONS**





**SDG**  
**11.6.1,**  
**12.4.1,**  
**12.4.2,**  
**12.5.1**  
**and**  
**14.1.1.**

**Results  
Framework  
by Country**

**Integrated  
to  
National  
Strategy  
Plan**

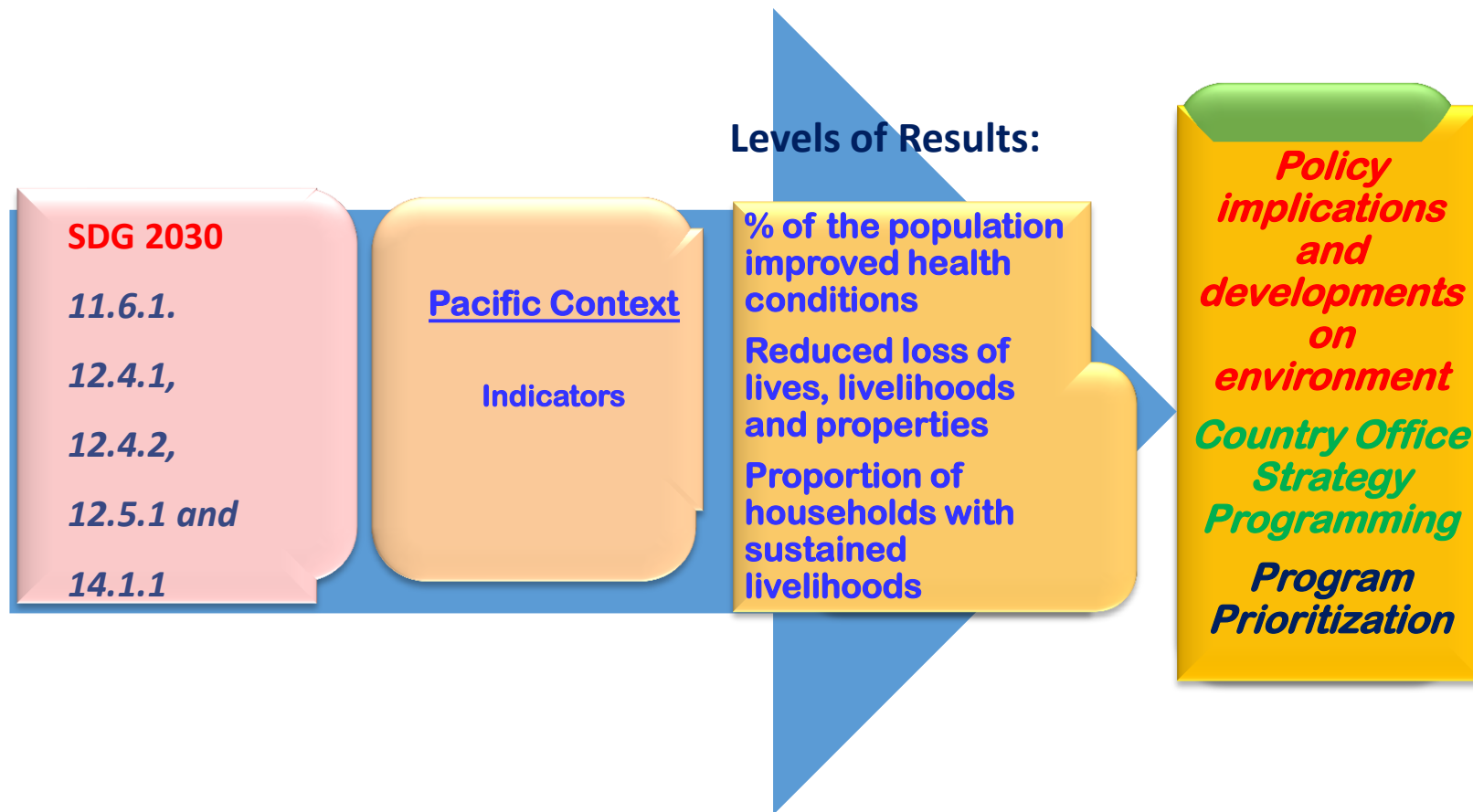
**National  
Structure,  
Governance  
and Support**

**Policy**

**Key Considerations**

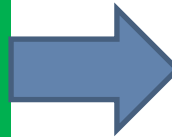


## International-Pacific-National Commitments – households



**Thematic Priority  
Indicators  
Waste and Pollution:**

**Pacific Context  
(Cleaner Pacific 2016-  
2025)**



**Population and Communities**

**Behaviour Change  
Effects on lives, livelihoods and properties  
Access to services  
Healthcare system  
Economic opportunities  
Men and Women inclusion  
Basic Human Rights  
Others**



## Results Chain and MfDR (Management for Development Results)



**WASTE and POLLUTION**

**Inputs**

**Results**

**Planning**

**Budgeting**

**Implemen-  
-tation**

**Monitoring  
and  
Evaluation  
System**

**Outputs**

**Outcomes**

**Impact**

**Integrated Results-Based Monitoring and Evaluation System:  
Sectoral Level**





**WASTE and POLLUTION**

**Inputs**

**Results**

Workplan

Budgeting

Implemen-  
-tation

**Monitoring  
and  
Evaluation  
System**

Outputs

Outcomes

Impact

Targets  
Logframe  
Results  
Framework

Commitment  
of funds  
Allocation  
Approval  
Release  
Expend  
Track

Activities  
national  
agencies  
and partners

Trained  
Regional  
staff  
  
Infra-  
structure  
Policy  
developed

Policy  
Legislated at  
regional level

New  
Country  
strategy  
adopted in  
waste and  
pollution  
sector

**Integrated Results-Based Monitoring and Evaluation System:  
Sectoral Level**



## Thematic Priority Indicators Waste and Pollution: Pacific Context (Cleaner Pacific 2016-2025)

- **Strengthen institutional capacity**
  - Capacity development (Skills and technical training, secondment, professional development, etc)
  - Staff capability and or capacity
- **Institutionalise**
  - Public-Private Partnerships
- **Implementation of Best Practice**
- **Implement sustainable best practices in WPC management**
- **Promote regional and national cooperation**
- **Strengthen policy linkages subsuming leadership and management support mechanism**
- **Establish an inclusive robust M&E system**



# SPREP by Programme



## Results Framework

Results Level	Objectively Verifiable Indicators (OVI)	Project Target (2026)	Baseline (Year) 2017	Previous Achievement Year Reporting	Achievement Reporting (Year)				Source(s) of Information	Data Quality Assessment
					Q1	Q2	Q3	Q4		
Impact										
Outcome										
Outputs										

Budgeted planned and implemented activities are highlighted in the Main Report

Waste and Pollution

**Institutional**

**Structure**

**Staff Capacity with roles and responsibilities**

**Financial Commitment**

**Allocation of budget at the national**

**Tracking Mechanisms**

**Robust and inclusive M&E System**

**Public-Private Partnership**

**Community Participation NGO/CBO engagements**

**National Framework supported with policies, strategy, legislation mechanisms, commitments, etc**

**Timeframe**

**Effects of assistance and policy support to member countries**  
**Cleaner Pacific 2025**  
**SDG 2030**

**CHANGES**  
**(Translational or Transactional)**

**Sustained livelihoods**  
**Community practices**  
**Pacific People**

**Criteria of Evaluation**

**Relevance**  
**Effectiveness**  
**Efficiency**  
**Sustainability**  
**Impact**



**“Everything costs and costs the Earth”**

*Maya Angelou*

**Thank You  
Rebecca V Polestico  
SPREP**

