

REPUBLIC OF PALAU



Palau PACC Presentation

By: Office of Environmental Response & Coordination (OERC)

"Office of the President"

P.O. Box 6051

Ngerulmud Capital, Melekeok State

Republic of Palau 96940

Tel: (680) 767-8681 • Fax: (680) 767-8638 • E-Mail: oerc2009@gmail.com

Second Multi-Partite Review Meeting

"Port Villa, Vanuatu"

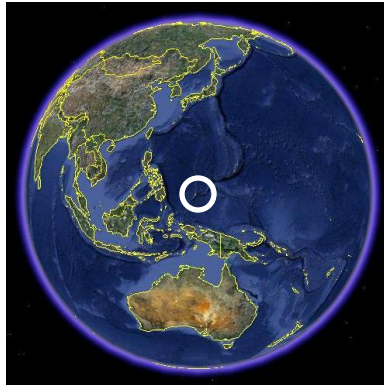
June 8-12, 2011

Overview of Palau Island:

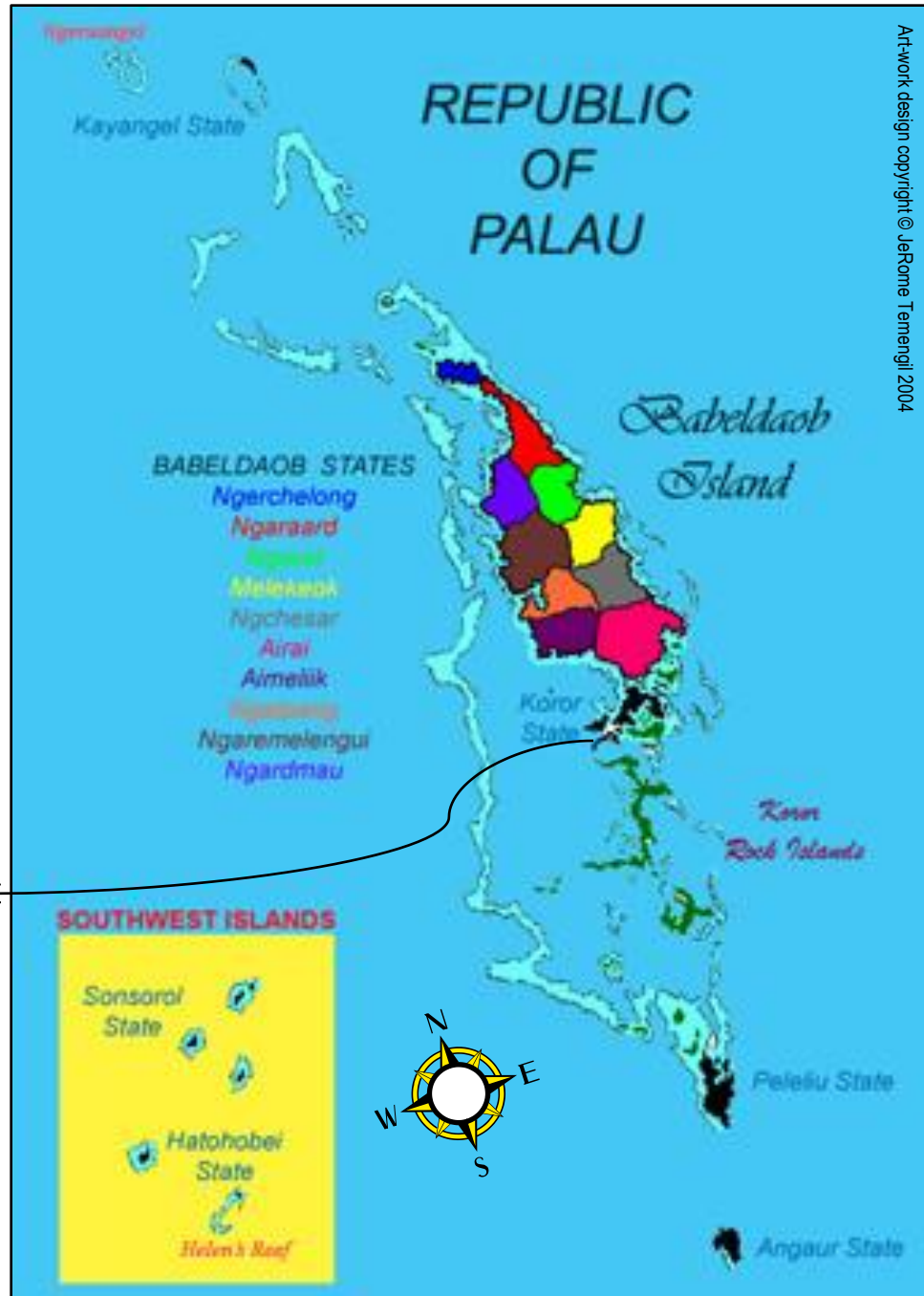
Palau is comprised of 16 states from Kayangel to the north, and Ngerchelongs, Ngaraard, Ngiwal, Melekeok, Ngchesar, Airai, Aimeliik, Ngatpang, Ngeremlengui, and Ngardmau located on the big island of Babeldaob to Koror across the bridge to the south and Peleliu and Angaur farther south through the rock islands and Sonsorol and Hatohobei about a days boat ride far south.



Satellite map (below) of Koror State, Palau's former capital comprising of 12,676 population of 19,907 (2005 census) of which the current capital of the country moved about 7 years ago to the big island of Babeldaob!

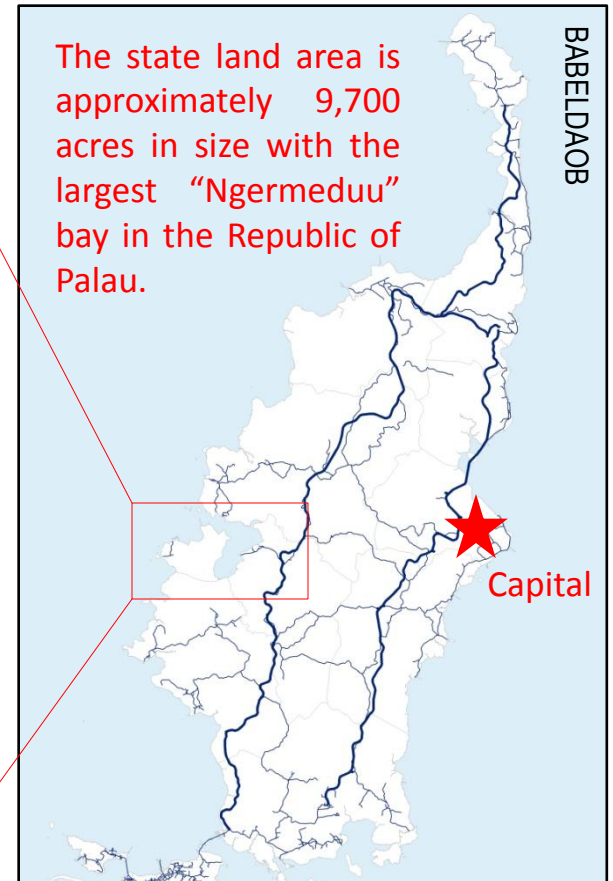
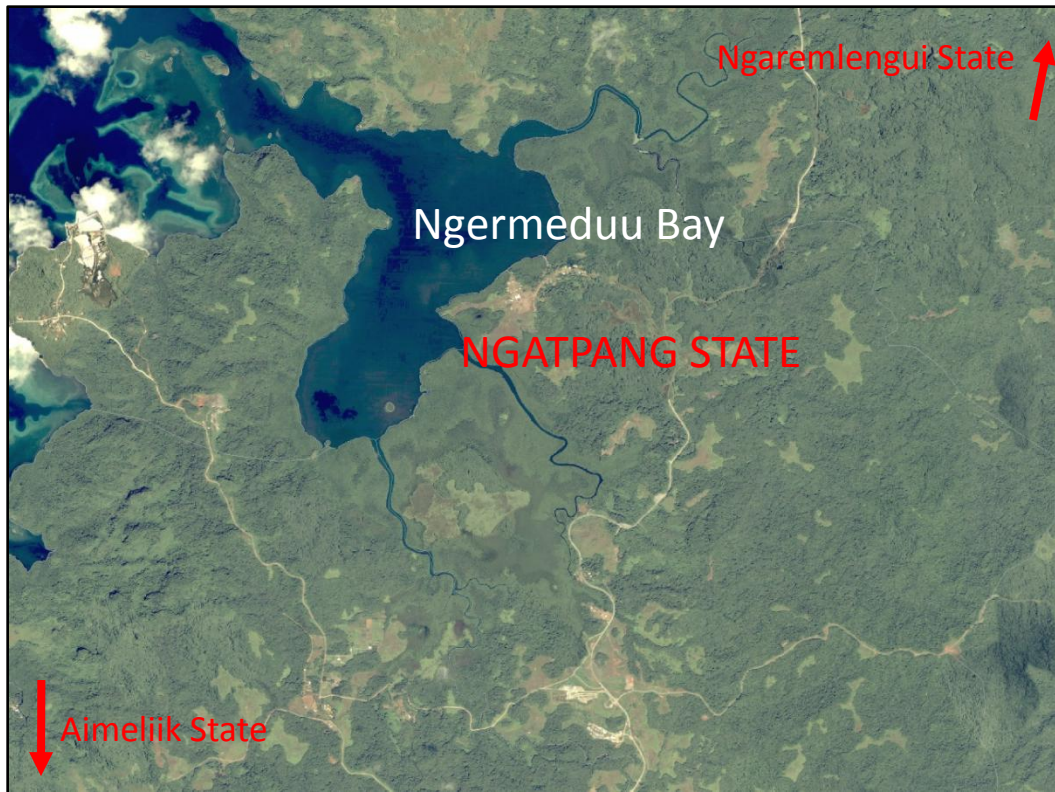


Globe picture courtesy of google earth map!

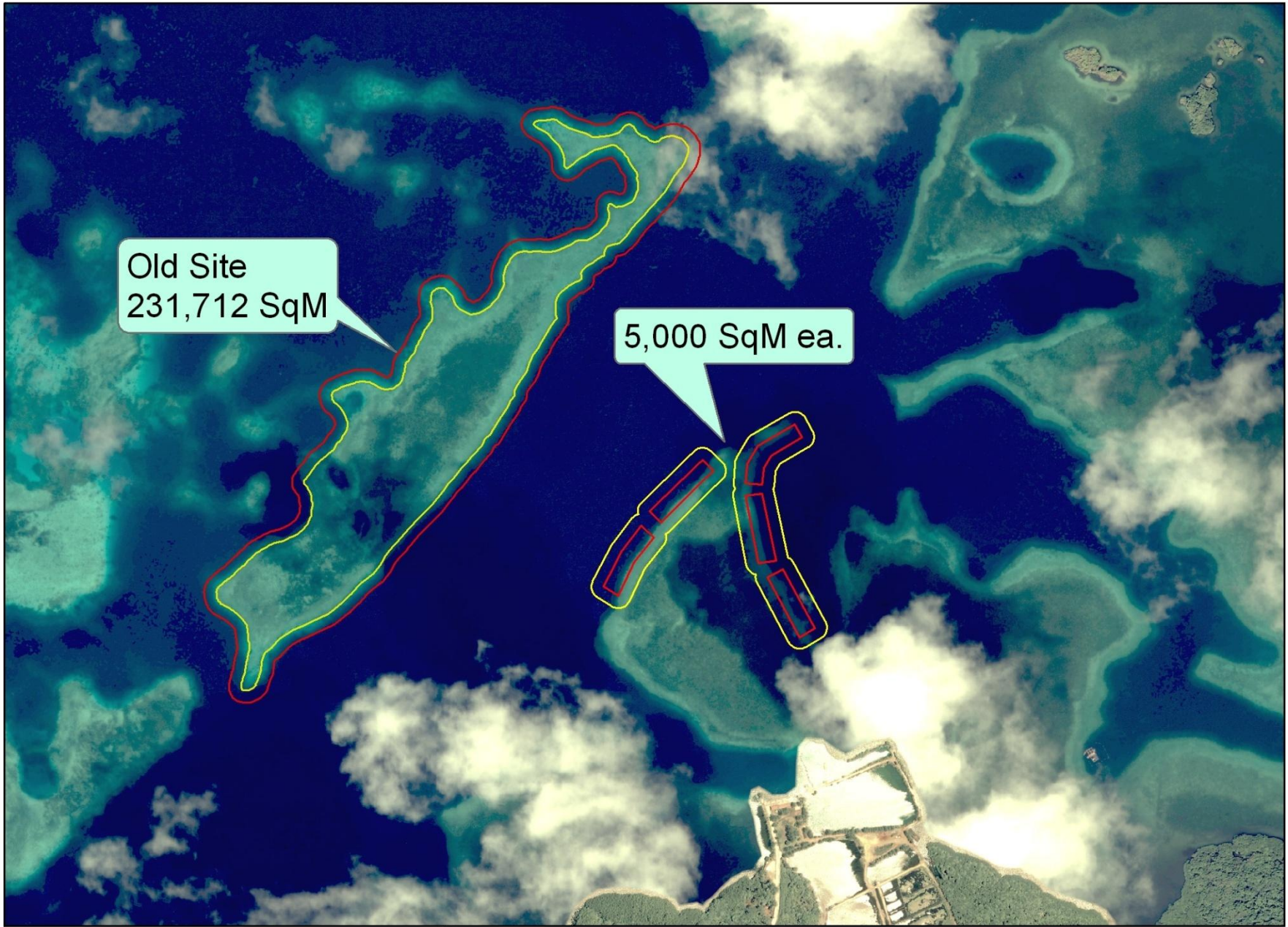




- Ngatpang State was chosen as the Palau's PACC pilot project in Palau.
- Pilot Site in Ngatpang as the "Ridge to Reef" concept of the food security management focuses on the taro patch at the low ground to local plants such as tapiocas, sweet potatoes, taros, etc... including taro plantation on the ridge high grounds to the marine surroundings of culturing clams, rabbit and milk fish, mangrove crabs, etc...
- Activities in this area is to benefit the community of elevating the food staples doing away with the reliance of the export of food.



From the pilot site, successful experiments of the activities of the food sector are to be shared with the whole Palau as well as with neighboring states.




Old Site
231,712 SqM

5,000 SqM ea.



Ngatpang Clam Farm

 This map shall not be used for official survey purposes, boundary interpretations or deformations, nor shall the data be used for spatial analysis beyond the limitations of the data. Enlargement of this product, by any means, destroys the spatial integrity of the data. Further information concerning the compilation methods and limitations of the data can be obtained from the Office of the Palau Automated Land and Resource Information System (PALARIS), Ministry of Resources and Development.

Palau PACC Family Tree

**NATIONAL CLIMATE CHANGE
"Steering Committee"**

PACC National Focal Point
"Office of Environmental Response & Coordination"

SPREP

UNDP

SPC

OTHERS

Pacific Adaptation to Climate Change
"Project Management Unit"
PMU

NOTES

- Annual Report Development
- Financial Request
- Monitoring & final evaluation, etc... will follow this structure

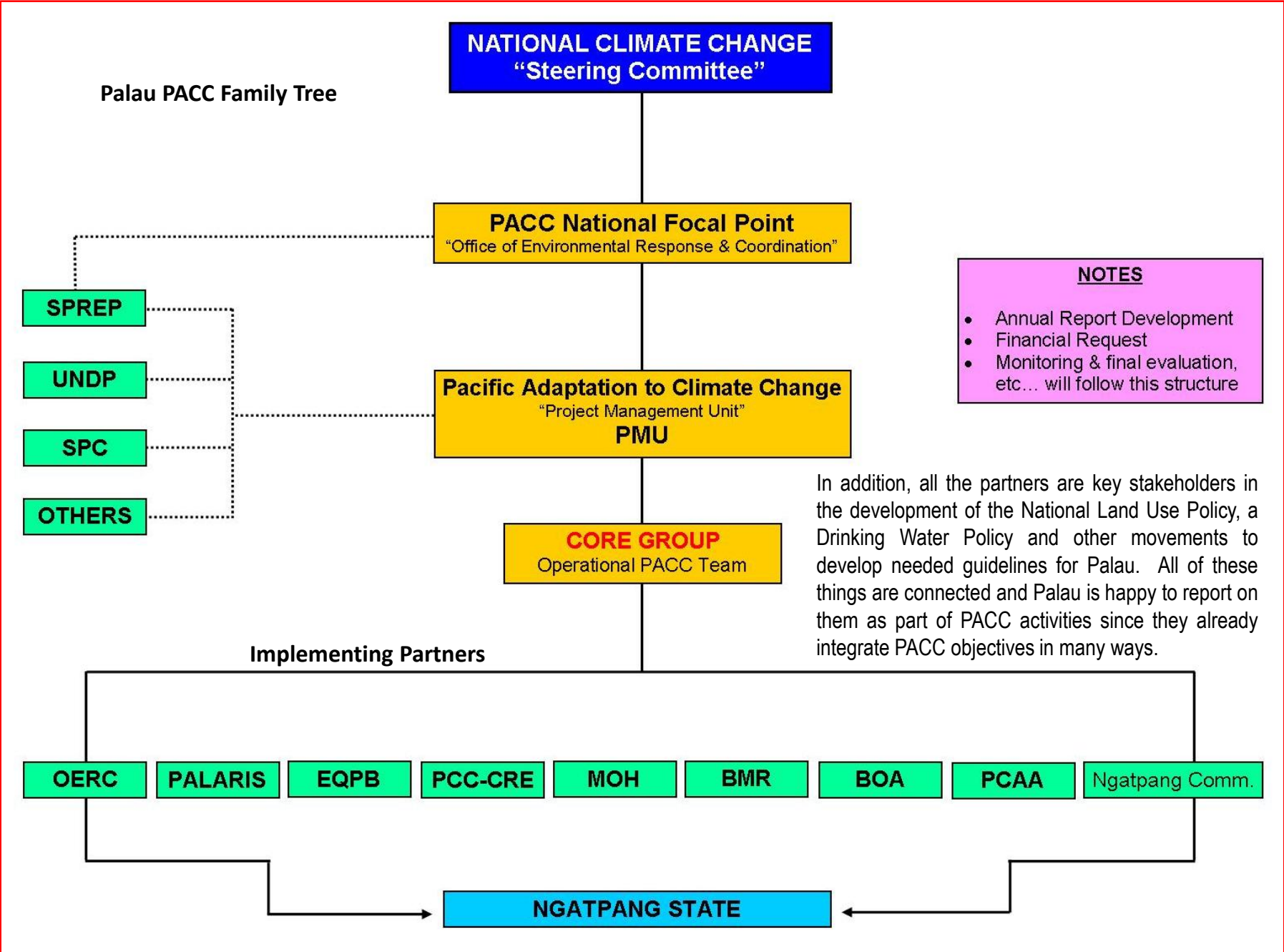
CORE GROUP
Operational PACC Team

In addition, all the partners are key stakeholders in the development of the National Land Use Policy, a Drinking Water Policy and other movements to develop needed guidelines for Palau. All of these things are connected and Palau is happy to report on them as part of PACC activities since they already integrate PACC objectives in many ways.

Implementing Partners

OERC **PALARIS** **EQPB** **PCC-CRE** **MOH** **BMR** **BOA** **PCAA** **Ngatpang Comm.**

NGATPANG STATE



Community Engagement



- ▶ Meeting with Ngatpang State citizens in Ngatpang State Government to brief them on the PACC project and how to proceed with the work, in particular on the inundated taro patch abandoned years ago.
- ▶ Palau Community Action Agency (PCAA) took the lead in the taro activity in August/September with villagers gathering at site owner's house (pictures) before the work on clearing the area started.
- ▶ In addition, the results of the Socio-Economic Assessment workshop hosted by Palau in December 2010 showed that a food security survey is required before the proposed 2011 activities are to take place and so the survey proposal was incorporated into the activities' schedule for the year 2011.





The questions is when do we actually start?



As we speak... Palau implementing partners are readying themselves to take off with operations based on activities for the 3rd Quarter including the 4th Quarter now that the assessment survey is complete. Activities will lead onto establishing the Food Security Policy integrating Climate Change! And rest assured, although there is no funding right now we are trying our best to move forward since our goal is to build resilience of our food security to Climate Change for our people.

PALAU PACC PROJECT
3RD QUARTER WORK-PLAN
[July to Sept, 2011]

Project Activity and Related Logframe Output	Anticipated Quarterly Output(s)/Outcome(s)	Quarterly Performance Indicator(s)	Responsible Individual(s)/ Partner(s)
Output 1: Gap Analysis Related Logframe Activity 1.1.1 Identify, collect and compile all existing agriculture plans, policies, and strategies in Palau.	1(a): Collect and compile existing plans, studies, strategies and related instruments 1(b): Key informant and group consultations	1(i): Formal Gap Analysis Report with summary of findings and recommendations	BOA
Output 2: Policy Development Strategy Related Logframe Activity 1.1.3 – Establish strategy for mainstreaming policy guidelines and recommendations	2(a): conduct facilitated partner meetings to develop strategy that identifies policy components and proposed recommendations	2(i): Strategy developed	BOA
Output 3: Vulnerability and Socioeconomic Assessment Related Logframe Activity 2.1.1 Conduct national socioeconomic assessment	3(a): Develop Survey, population sample, survey strategy and data analysis template 3(b): Train surveyors 3(c): Survey conducted	3(i): Survey conducted in 6 states 3 (ii) Compile and analyze Survey data	PCC-CRE
Output 4: Adaptation options identified Related Logframe Activity 2.1.2 – Identify and demonstrate adaptation options.	4 (a): Dikes constructed to prevent salt water intrusion in demonstration farm 4(b): Salt water tolerant taro collected and tested 4(c): Site for clam farms identified and established 4(d): Seed production of finfishes and mangrove crab conducted 4(e): Identify, propagate, layout and plant agroforestry area	4 (i): Salt water intrusion evaluated 4 (ii): Evaluation of Salt water tolerant taro 4(c): Monitor clam survival 4(d): Finfish fries and mangrove crablets produced 4(e): Agroforestry crops propagated and planted	PCC-CRE, BOA, PCAA, BMR, EQPB, PALARIS, Ngatpang St
Output 5: Education and communication materials	4(a): Consultation with key stakeholders 4(b): PACC Team meetings to develop	4(i): Consultation conducted 4(ii): Publication, printing, media developed	OERC

Continue 3rd Quarter Activities

<p>Related Logframe Activity 3.1.2 Develop Palau-specific education and communication materials..</p>	<p>Education/Awareness programs/activities</p>		
<p>Output 6: Quarterly newsletters</p> <p>Related Logframe Activity 3.1.4, 3.2.1 and 3.2.3. Prepare country-specific quarterly PACC newsletters/snapshots (distributed in print or through web, emails).</p>	<p>5(a): establish timeline and information gathering strategy</p>	<p>5(i): Newsletter design and publication strategy</p> <p>5(ii): Distribution strategy established</p>	<p>OERC</p>
<p>Output 7: Shared digital database of climate change documents</p> <p>Related Logframe Activity 3.2.2 – knowledge sharing of PACC experiences throughout Palau</p>	<p>6(a): collect and compile relevant documents</p> <p>6(b): develop database</p>	<p>6(i): document compilation ongoing</p> <p>6(ii): database established</p>	<p>OERC</p>
<p>Output 7 : Project Coordination</p> <p>Related Logframe Activity 4.1.1; 4.1.2; 4.1.3; 4.1.4; 4.1.5- Prepare narrative and financial quarterly report and FACE Form and submit to SPREP and develop, revise and update Annual and Multi-Year Work Plan</p>	<p>7 (a): Prepare narrative and financial quarterly reports</p> <p>7(b): Fill in Face Forms</p> <p>7(c): Develop and revise Annual and Multi-Year WorkPlan</p>	<p>7(i): Narrative and financial quarterly reports submitted</p> <p>7(ii): FACE Forms filled and submitted</p> <p>7(iii): Annual and Multi-Year Work Plan developed and revised</p>	<p>OERC</p>
<p>Output 8: Food Security Policy development</p> <p>Related Logframe Activity 1.1.4 – Draft food security policy and action plan (begin policy review)</p>	<p>8(a): hire consultants to assist with policy development</p>	<p>8(i): RFP developed</p> <p>8(ii): Bidding process initiated</p>	<p>BOA/BMR</p>
<p>Output 9: Evaluate and select Adaptation Measures</p> <p>Related LogFrame Activity 2.1.3 – Cost Benefit Analysis done with results from Socioeconomic Assessment</p>	<p>9(a): costing exercise of climate change impacts on food security and health</p> <p>9(b): identify adaptation measures to address economic analysis</p>	<p>9(i): Costing exercise completed</p> <p>9(ii): Adaptation measures identified and documented based on economic analysis</p>	<p>PCC</p>

PALAU PACC PROJECT
4TH QUARTER WORK-PLAN
[October - December 2011]

Project Activity and Related Logframe Output	Anticipated Quarterly Output(s)/Outcome(s)	Quarterly Performance Indicator(s)	Responsible Individual(s)/ Partner(s)
<p>Output 1: Gap Analysis</p> <p>Related Logframe Activity 1.1.1, 1.1.2 Conduct gap analyses for institutional capacities and climate change</p>	<p>1(a): Review studies, strategies and related instruments</p> <p>1(b): Key informant and group consultations</p>	<p>1(i): Formal Gap Analysis Report with summary of findings and recommendations</p>	OERC
<p>Output 2: Vulnerability and Socioeconomic Assessment</p> <p>Related Logframe Activity 2.1.1 Conduct national socioeconomic assessment</p>	<p>2(a): Compile and analyse data</p> <p>2(b): Report writing</p>	<p>2(i): Formal Assessment Report with methodology, scope of work, summary of findings, implications for adaptation measures and shared lessons.</p>	PCC-CRE
<p>Output 3: Adaptation options</p> <p>Related Logframe Activity 2.1.2 – Identify and demonstrate adaptation options</p>	<p>3 (a): Dikes constructed to prevent salt water intrusion in demonstration farm</p> <p>3(b): Salt water tolerant taro collected and tested</p> <p>3(c): Site for clam farms identified and established</p> <p>3(d): Seed production of finfishes and mangrove crab conducted</p> <p>3(e): Identify, propagate, layout and plant agroforestry area</p>	<p>3 (i): Salt water intrusion evaluated</p> <p>3 (ii): Evaluation of Salt water tolerant taro</p> <p>3(c): Monitor clam survival</p> <p>3(d): Finfish fries and mangrove crablets produced</p> <p>3(e): Agroforestry crops propagated and planted</p>	PCAA, BOA, PCC, BMR.EQPB, PALARIS, Ngatpang St.
<p>Outcome 4: Training workshop on adaptation measures and implementation plan</p>	<p>4 (a): Conduct training workshop on pilot demonstration</p>	<p>4 (i) : Training workshop conducted</p>	PCAA, BOA, PCC, BMR. Ngatpang St.

Continue 4th Quarter Activities

<p>Output 4: Education and communication materials</p> <p>Related Logframe Activity 3.1.2 Develop Palau-specific education and communication materials..</p>	<p>4(a): Consultation with key stakeholders</p> <p>4(b): PACC Team meetings to develop Education/Awareness programs/activities</p>	<p>4(i): Consultation conducted</p> <p>4(ii): Publication, website, printing, media developed</p>	<p>OERC</p>
<p>Output 5: Quarterly newsletters</p> <p>Related Logframe Activity 3.1.4; 3.2.1 and 3.2.3 . Prepare country specific quarterly PACC newsletters/snapshots (distributed in print or through web, emails)</p>	<p>5(a): Establish timeline and information gathering strategy</p>	<p>5(i): Newsletter design and publication strategy</p> <p>5(ii): Distribution strategy established</p>	<p>OERC</p>
<p>Output 6: Project Coordination</p> <p>Related Logframe Activity 4.1.1;4.1.2; 4.1.3; 4.1.4; 4.1.5 :- Prepare narrative and financial quarterly report and FACE Form and submit to SPREP and develop, revise and update Annual and Multi Year Work Plan</p>	<p>6 (a): Prepare narrative and financial quarterly reports</p> <p>6(b): Fill in Face Forms</p> <p>6(c): Develop and revise Annual and Multi-Year WorkPlan</p>	<p>6(i): Narrative and financial quarterly reports submitted</p> <p>6(ii): FACE Forms filled and submitted</p> <p>6(iii): Annual and Multi-Year Work Plan developed and revised</p>	<p>OERC</p>

A decorative border with colorful flowers and green leaves framing the text. The border features various floral motifs, including large orange and green flowers, smaller pink flowers, and green leaves with white outlines. The background is white.

THE END