

Red imported fire ant

Solenopsis invicta

STOP THIS INVADER IN THE PACIFIC!

These ants will **cause harm** to you, your crops and your environment. If you find any of these ants, contact your local biosecurity/quarantine

KEY FEATURES

Size: 2–6mm



bites



stings



harms
crops



harms
people



harms
wildlife



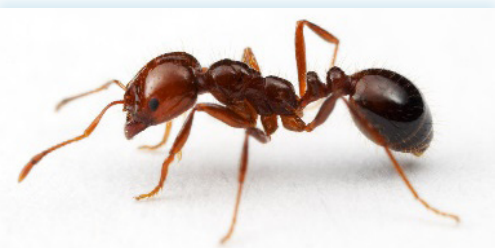
lives on
ground



day
active



different
sizes



What they look like

- reddish-brown body, black abdomen
- very aggressive and sting many times when disturbed
- workers (the ants you see) in many sizes 2–6 mm long
- queens (live in the nest) are much larger than workers
- new queens have wings and are sometimes seen outside
- builds mounds up to 40 cm high with no visible entrance
- sometimes mounds are small

Problems they cause

- kill small animals like crabs, birds and lizards
- painful sting can cause allergic reaction
- reduce agricultural productivity
- make it difficult to farm (stinging)
- mounds interfere with farm equipment
- hard to eradicate (get rid of)

Where they live

build mounds in places like:

- gardens, parks
- fields, pastures
- beaches

How they travel

hidden in:

- wooden containers
- soil, compost, mulch, sand, gravel
- rubbish
- machinery, vehicles



Images (top to bottom):

© www.alexanderwild.com

Open source

© Johnny N. Dell, BugwoodWiki

© www.alexanderwild.com

© www.alexanderwild.com



SPREP
Secretariat of the Pacific Regional
Environment Programme

UN
environment
programme

