



Invasive species are the leading driver of biodiversity loss in the Pacific. They have a significant impact on ecosystem resilience leading to a loss of ecosystem services and a reduced ability to adapt to climate change.

[Pacific Regional Invasive Species Management Support Service \(PRISMSS\)](#) is a coordinating mechanism designed to facilitate the scaling up of operational management of invasive species in the Pacific. PRISMSS brings together experts to provide support within the Pacific region with a focus on protection of indigenous biodiversity and ecosystem function. As a service provider, PRISMSS provides a comprehensive suite of support services in a cohesive, effective, efficient, and accessible manner to Pacific Island countries and territories.

[Restoring Island Resilience \(RIR\)](#): The PRISMSS - Restoring Island Resilience (RIR) is a New Zealand-PRISMSS collaboration project that aims to improve Pacific Island Countries and territories livelihoods and resilience to climate change by reducing the impact of invasive species on natural and agricultural ecosystems through the [five PRISMSS programmes](#).

ABOUT PRISMSS



PRISMSS

RESTORING ISLAND RESILIENCE

PRISMSS is a coalition of organisations working together to tackle the issue of Invasive species in the Pacific, providing Pacific Island countries with access to best practice and expertise in managing invasive species. The six programmes of PRISMSS which address all thematic areas of invasive species management are:

1. Protect Our Islands (POI)
2. Predator Free Pacific (PFP)
3. War On Weeds (WOW)
4. Natural Enemies Natural Solutions (NENS)
5. Resilient Ecosystems Resilient Communities (RERC)
6. Protect Our Marine Areas (POMA)

PRISMSS PROGRAMME UPDATES



Protect Our Islands

"National and inter-island biosecurity and EDRR"

Empowering Vava'u: A Celebration of Climate Resilience, Biodiversity, and Inter-Island Biosecurity

The Protect Our Islands Vava'u Festival and Boat Parade brought communities together to celebrate shared efforts that strengthened climate resilience and safeguard Vava'u's biodiversity from invasive species and central to this initiative was the enhancement of inter-island biosecurity. The event.....[Read more](#)





Predator Free Pacific

"Removal of invasive mammalian predators from Islands"

Reviving the Unique Biodiversity of Nu'utele island

The Ministry of Natural Resources and Environment (MNRE) carried out a significant conservation initiative on Nu'utele Island, one of Aleipata's offshore islands. This operation was conducted in partnership with the Secretariat of the Pacific Regional Environment Programme (SPREP), under PRISMSS and with...[Read more](#)



Nature restored: Island nation of Tuvalu boosts biodiversity, climate resilience with Nature-based Solution

In an innovative conservation success, Tuvalu has completed the successful eradication of invasive rats from four islets, namely, Sakalua, Motumua, Teafuone, and Tefatule, within the Nukufetau Atoll, as well as Tepuka and Falefatu. This nation-led initiative, supported by regional and....[Read more](#)



War On Weeds

"Management of high priority weeds"

Mauke Takes a Stand Against Invasive Passionfruit Vine to Protect Culture and Nature

The people of Mauke are stepping up efforts to combat the invasive red passionfruit vine (*Passiflora rubra*), a fast-growing threat to the island's environment and cultural heritage. Through a formal partnership signed in February 2025, the Cook Islands and...[Read more](#)

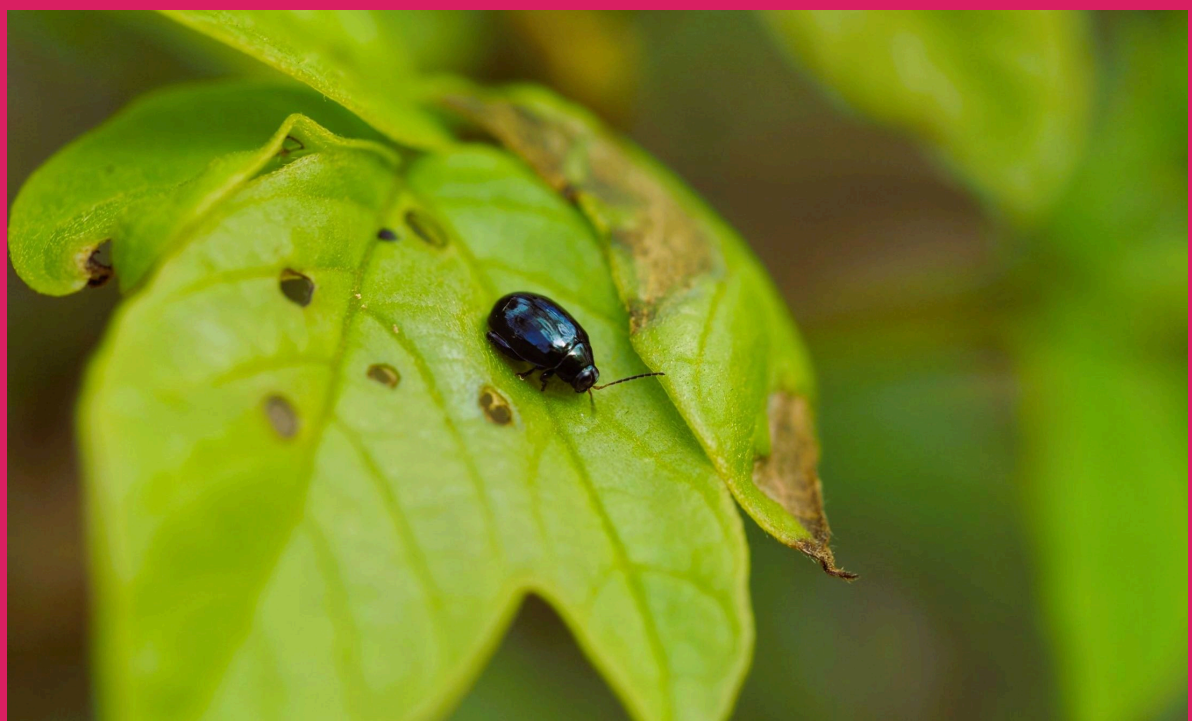


Natural Enemies - Natural Solutions

"Biological control of widespread weeds"

African Tulip Beetle Enhances Rarotonga's Invasive Species Battle

A prioritisation workshop in Nuku'alofa brought together stakeholders and experts from across Tonga to enhance their invasive weeds management. Hosted by the Natural Enemies - Natural Solutions (NENS) programme and the Tonga Ministry of Meteorology, Energy, Information, Disaster Management....[Read more](#)



Resilient Ecosystems - Resilient Communities

"Priority area ecological restoration"

Nusumetu Community Conservation Site: Where Myth, Culture and Conservation Intertwine

In the Pacific, Melanesian communities such as those in Nusumetu, nestled in Green Hills of North Tanna in Vanuatu, myths are not just stories, they are maps of identity, land rights, and spiritual connection. The yam myth of Nusumetu is centred on why the land and forests must be respected and...[Read more](#)



Atiu Island Mobilises to Combat Invasive Species and Strengthen Climate Resilience

Atiu Island is taking decisive action to tackle invasive species threatening its ecosystems and community wellbeing, with support from SPREP and PRISMSS. Following a national scoping consultation in 2024, a...[Read more](#)





Regional Invasive Species Updates

Strengthening Biodiversity protection in Pacific SIDS through targeted invasive species management technical training

In a landmark gathering that emphasised the urgency of preserving Pacific islands biodiversity through invasive species management, representatives from Pacific Small Island Developing States (SIDS) convened in Apia for a specialised training...[read more](#)



Pacific Island Nations Celebrate Milestones in Biodiversity and Climate Resilience Through GEF-6 Regional Invasive's Project

Representatives from the Republic of the Marshall Islands (RMI), Niue, Tonga and Tuvalu are celebrating significant achievements in biodiversity conservation and climate resilience through the successful implementation of the GEF-6 Regional...[Read more](#)



NAVIGATOR

THE PRISMSS COMPASS



The PRISMSS Protect Our Marine Areas programme, which now becomes the sixth PRISMSS programme, has been added to our Navigator platform. Country coordinators are encouraged to utilise the Navigator to facilitate country requests on specific invasive species management programmes.



Pacific Invasive Species BATTLER

For more resources on invasive species management in Pacific visit the

[Battler Resource Base](#)

PRISMSS Partners



BIOECONOMY
SCIENCE
INSTITUTE



Manaaki Whenua
Landcare Research



Department of
Conservation
Te Papa Atawhai



Earth Sciences
New Zealand



Pacific
Community
Communauté
du Pacifique



SPREP
Secretariat of the Pacific Regional
Environment Programme

PRISMSS Powered by



Join us on our journey by subscribing to our newsletter

Pacific Regional Invasive Species Management Support Service (PRISMSS) SPREP Campus, Avele Road,
Vailima, Apia, Samoa

Verified Unsubscribe SM [Unsubscribe](#)



TRUSTED EMAIL



Share



Share



Share