



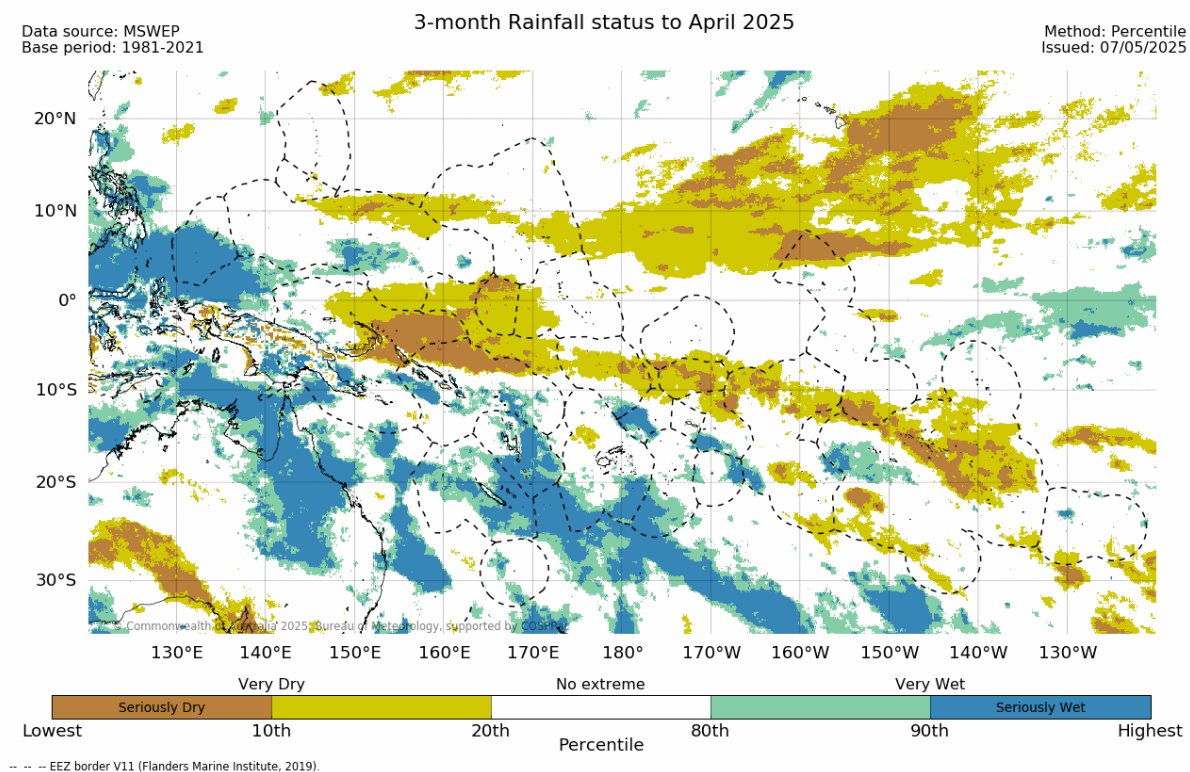
SPREP
Secretariat of the Pacific Regional
Environment Programme

Pacific Islands Early Action Rainfall Watch May 2025

El Niño-Southern Oscillation Status: as of 30 April 2025

The El Niño–Southern Oscillation (ENSO) and Indian Ocean Dipole are neutral. Bureau's model predicts neutral ENSO (neither El Niño nor La Niña) until at least September. This is consistent with forecasts from a range of international models. However, skill for ENSO forecasts at this time of the year has historically been low beyond winter.

Rainfall Status: as of 30 April 2025



The 3-month rainfall status for February to April 2025 was Very Wet or Seriously Wet over southern Palau, and parts of southern FSM in the northern Pacific. Very Wet or Seriously Wet areas were observed over western PNG mainland, southern and eastern Solomon Islands, New Caledonia, Vanuatu, southern Fiji, southern and northern Tonga, Wallis and Futuna, and western Cook Islands.

The rainfall status was Very Dry or Seriously Dry for February to April 2025 in a band stretched eastwards over northern FSM and to central RMI in the northern hemisphere. Another band of Very Dry or Seriously Dry stretched southeast from PNG Islands, northern Solomon Is., Nauru, western Gilbert, southern Phoenix, southern and northern Line Is., central Tuvalu, Tokelau, northern American Samoa, northern Cook Is., and northern French Polynesia.

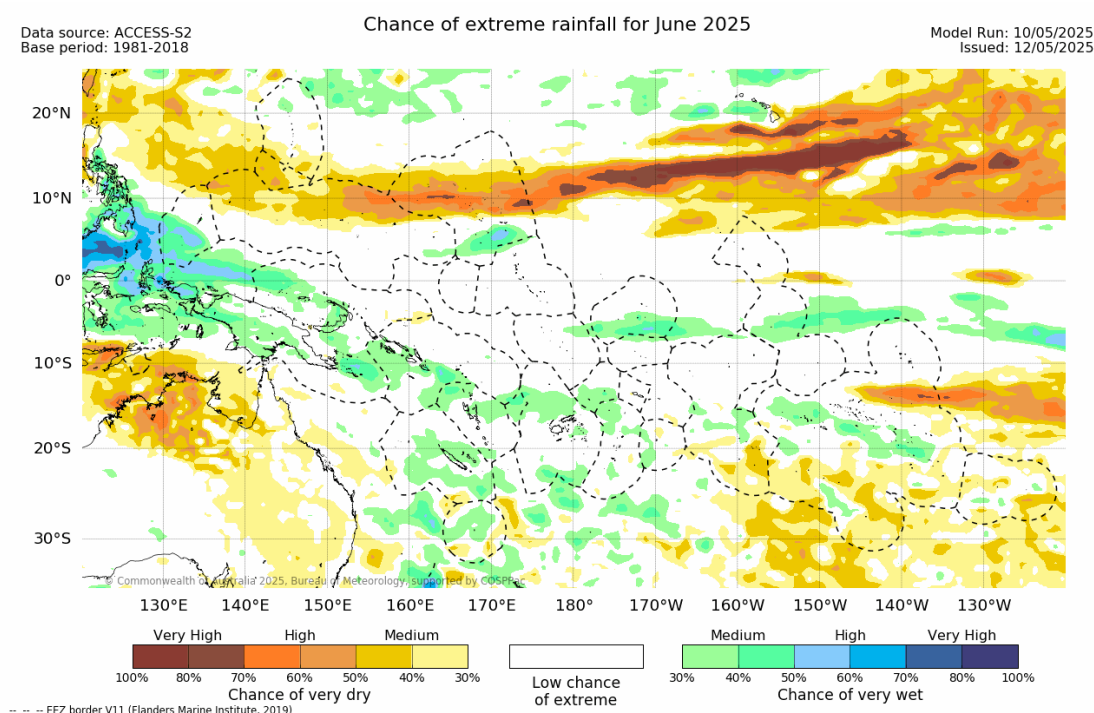
The regional maps are available via http://access-s.clide.cloud/files/project/EAR_watch/pacificx/

Three-month total rainfall is typically used for monitoring grasslands, shallow rooted plants and small water body (e.g. small water tanks, streams) moisture deficits. Allow for uncertainty associated with island size, topography, geology and soil type.

Rainfall Status

- Estimates of moisture/water stress are based on recent rainfall compared with historical observations using the Percentile (Decile) Index.
- Definitions: "Very Dry" = rainfall in the lowest 20% of the historical record for that location and season, "Very Wet" = rainfall in the highest 20% for that location and season, "Seriously Dry" = rainfall in the lowest 10% of the historical record for that location and season, "Seriously Wet" = rainfall in the highest 10% for that location and season.

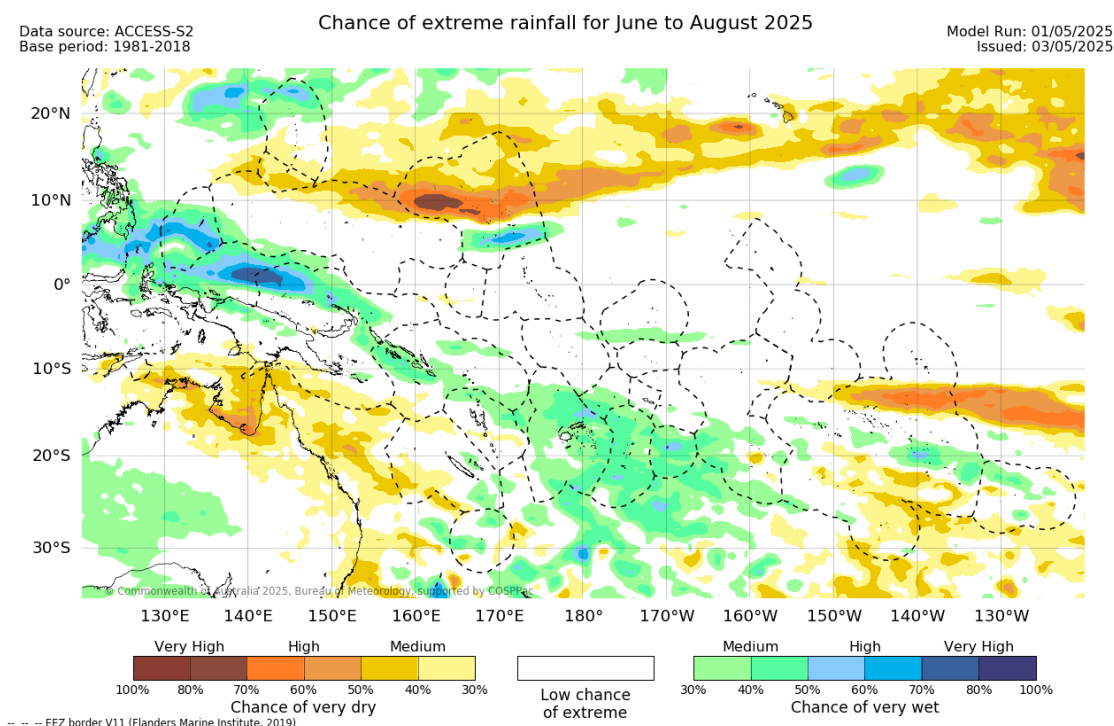
Monthly Rainfall Watch: June 2025



For June 2025, there is a medium to very high chance of rainfall in the Very Wet category (highest quintile, which includes the Seriously Wet category) over southern Palau, and southern RMI. There is also medium to very high chance of rainfall in the Very Wet category over PNG mainland, PNG Islands, Solomon Is., New Caledonia, northern and southern Vanuatu, northern Fiji, Kiribati (southern Phoenix, central Line Is.), northern Tonga, Wallis and Futuna, western Niue, central Cook Is., and central French Polynesia.

There is a medium to very high chance that rainfall will be in the Very Dry category (lowest quintile, which includes the Seriously Dry category) in a band stretching eastwards over northern Palau, Guam, southern CNMI, northern FSM to northern RMI. Patches of medium to very high chance that rainfall will be in the Very Dry category over southern Cook Is., northern and southern French Polynesia, and Pitcairn Is.

Seasonal Rainfall Watch: June – August 2025



For June to August 2025, there is a medium to very high chance of rainfall in the Very Wet category (highest quintile, which includes the Seriously Wet category) over northern CNMI, Palau, and southern RMI, in the northern Pacific. A band stretch southeast over PNG (Momase region), northern PNG, Solomon Islands, northern Vanuatu, Fiji, Tonga, Wallis and Futuna, Niue, southern Cook Is., central French Polynesia, and northern Pitcairn Is.

In contrast, there is a medium to very high chance of rainfall in the Very Dry category (lowest quintile, which includes the Seriously Dry category) in a band stretching eastwards from Guam, southern CNMI, northern FSM, to northern RMI. Patches of medium to very high chance of rainfall in the Very Dry category over southern PNG, New Caledonia, southern Line Is., southern French Polynesia, and Pitcairn Is.

Monthly and Seasonal Rainfall Watch

- Information provided has been interpreted on a divisional scale where possible as Pacific Island Countries can experience a high range of rainfall variability within a country. It is possible to have forecasts which simultaneously favour above and below normal rainfall in different parts of the one country.
- Definitions: "Chance of Very Dry" = percent chance of rainfall in the lowest 20% of the historical record for that location and season, "Chance of Very Wet" = percent chance of rainfall in the highest 20% for that location and season. Medium, High and Very High refer to the percent probability level where Very High has the highest confidence and represents the range 70% and above.
- Local Met Services should be contacted for detailed information and outlooks. This product is not to be distributed to the public or other organisations.