



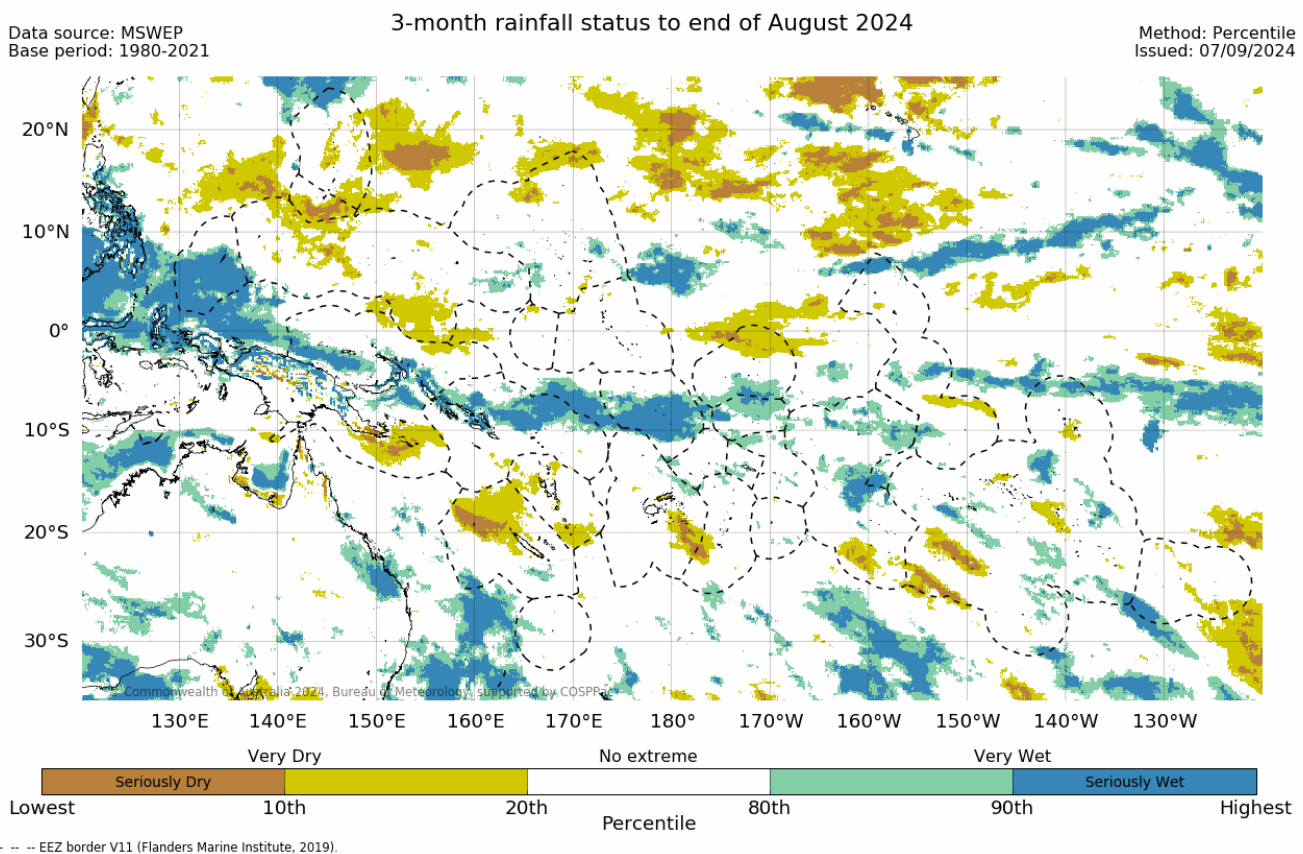
Climate and Ocean Support Program in the Pacific (COSPPac)

Regional Early Action Rainfall Watch September 2024

El Niño-Southern Oscillation Status: as of 31 August 2024

The El Niño–Southern Oscillation (ENSO) is currently neutral. Sea surface temperatures (SSTs) in the central equatorial Pacific Ocean are ENSO-neutral, having gradually cooled from El Niño levels since December 2023. This cooling is being sustained by deep waters surfacing in the central and eastern Pacific. Atmospheric patterns, including cloud and trade winds, remain largely ENSO-neutral.

Rainfall Status: as of 31 August 2024



The 3-month rainfall status for June to August 2024 was Very Wet or Seriously Wet over Palau, much of the PNG Islands and the north of the mainland, most of Solomon Islands, central Tuvalu, Tokelau, southern Phoenix Is., in parts of the northern and central Cook Islands, plus scattered small patches in FSM, RMI, the Line Is., and French Polynesia.

The rainfall status was Very Dry or Seriously Dry for June to August over southern CNMI, Guam, northwest and southeast FSM, far northern RMI, the northern Phoenix Is., southeastern PNG, northern New Caledonia, while smaller scattered patches were analysed in Vanuatu, southeast Fiji, southern Cook Islands, and French Polynesia.

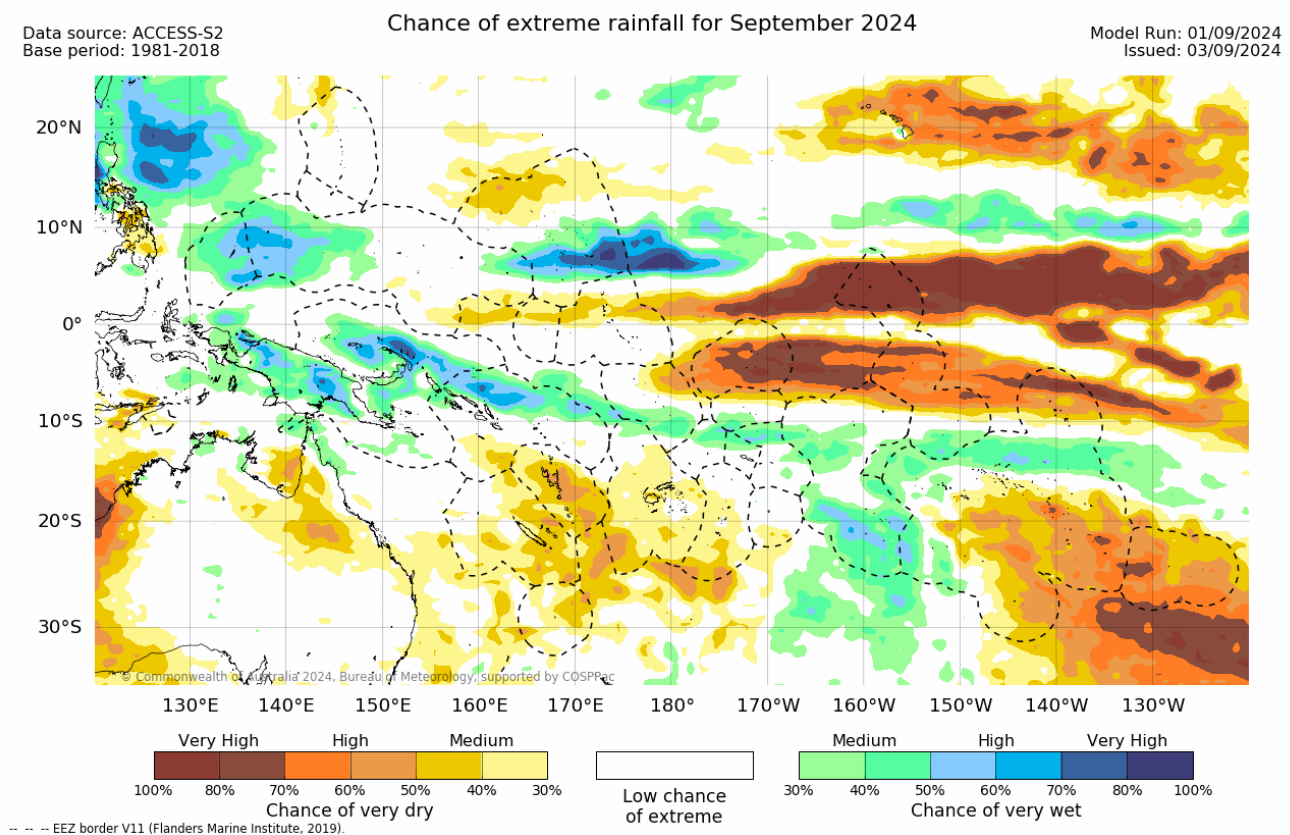
The regional maps are available via http://access-s.clide.cloud/files/project/EAR_watch/pacificx/

Three-month total rainfall is typically used for monitoring grasslands, shallow rooted plants and small water body (e.g. small water tanks, streams) moisture deficits. Allow for uncertainty associated with island size, topography, geology and soil type.

Rainfall Status

- Estimates of moisture/water stress are based on recent rainfall compared with historical observations using the Percentile (Decile) Index.
- Definitions: "Very Dry" = rainfall in the lowest 20% of the historical record for that location and season, "Very Wet" = rainfall in the highest 20% for that location and season, "Seriously Dry" = rainfall in the lowest 10% of the historical record for that location and season, "Seriously Wet" = rainfall in the highest 10% for that location and season.

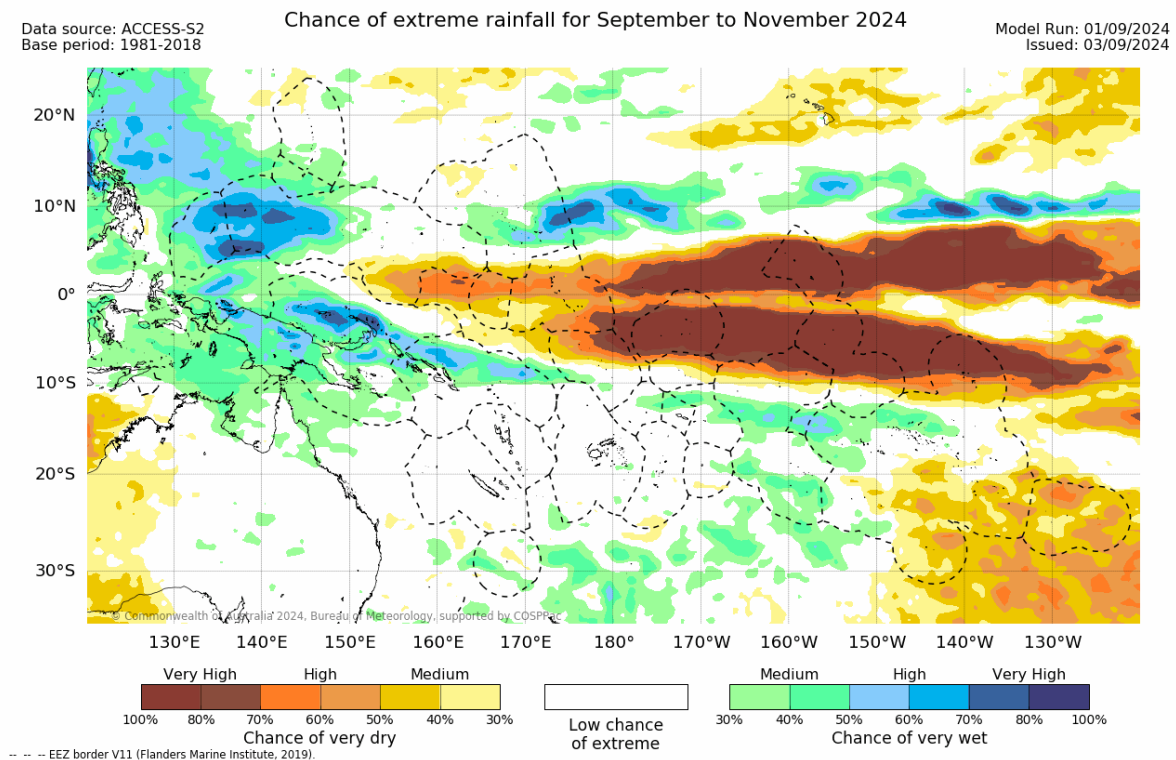
Monthly Rainfall Watch: September 2024



For September 2024, there is a medium to very high chance of rainfall in the Very Wet category (highest quintile, which includes the Seriously Wet category) over Palau, western FSM, central to southern RMI, most of PNG, and in a band stretching in a southeasterly direction from PNG Islands across the northern Solomon Islands, southern Tuvalu, northern Wallis and Futuna, northern Samoa, northern American Samoa, Cook Islands, and northern and western French Polynesia.

There is a medium to very high chance that rainfall will be in the Very Dry category (lowest quintile, which includes the Seriously Dry category) from southeastern FSM across northern Nauru, Kiribati (northern Gilbert Is., Phoenix and most of Line Is.), northeastern Tuvalu, far northern Cook Islands, and far northern French Polynesia. There is another area covering the southern Solomon Islands, New Caledonia, Vanuatu, Fiji, and Tonga, while a third area covers central and southern French Polynesia, and Pitcairn Islands.

Seasonal Rainfall Watch: September – November 2024



For September to November 2024, there is a medium to very high chance of rainfall in the Very Wet category (highest quintile, which includes the Seriously Wet category) over Palau, western FSM, Guam, southern CNMI, PNG, and the far northern Solomon Islands. The chances are similarly high over central to southern RMI, while another region affects eastern Wallis and Futuna, northern Samoa, northern American Samoa, central and southern Cook Islands, the southern fringe of the Line Islands, and western French Polynesia.

In contrast, there is a medium to very high chance of rainfall in the Very Dry category (lowest quintile, which includes the Seriously Dry category) in an equatorial band east of 150°E covering southeastern FSM, far southern RMI, Nauru, Kiribati, northern Tuvalu, northern and eastern Tokelau, northern Cook Islands, French Polynesia (far northern plus central to southeastern), and Pitcairn Islands.

Monthly and Seasonal Rainfall Watch

- Information provided has been interpreted on a divisional scale where possible as Pacific Island Countries can experience a high range of rainfall variability within a country. It is possible to have forecasts which simultaneously favour above and below normal rainfall in different parts of the one country.
- Definitions: "Chance of Very Dry" = percent chance of rainfall in the lowest 20% of the historical record for that location and season, "Chance of Very Wet" = percent chance of rainfall in the highest 20% for that location and season. Medium, High and Very High refer to the percent probability level where Very High has the highest confidence and represents the range 70% and above.
- Local Met Services should be contacted for detailed information and outlooks. This product is not to be distributed to the public or other organisations.