



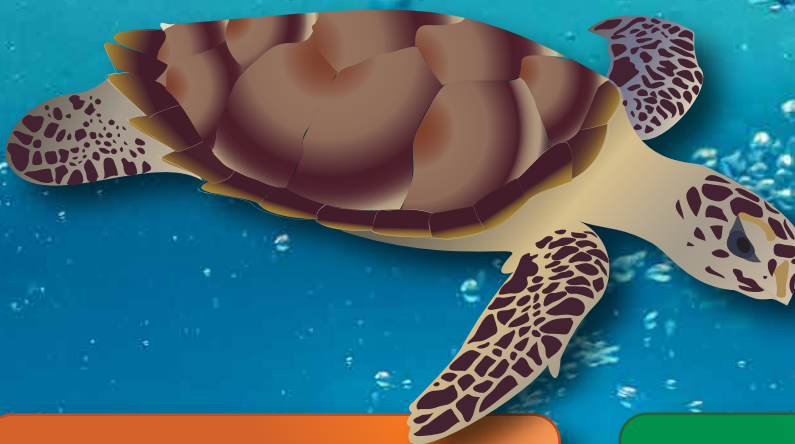
Best Practice for Tourism Interaction with Turtles

Pacific BioScapes Programme - Vanuatu

The Pacific BioScapes Programme is providing support to produce best practice guidelines and a code of conduct for tourism operators to guide how they can **interact appropriately and safely with turtles in Vanuatu**.

There are many factors that can impact turtle populations due to tourism and development. These include direct contact through swimming, impacts on beach nesting sites, tag and release monitoring, lighting and other coastal infrastructure and also changes to local traditions and culture due to the presence and operation of tourism activities.

Through BioScapes, the **Vanuatu Environmental Science Society** is consulting with stakeholders and the government, and reviewing other global and national criterias to produce the new guidelines. Training workshops will then be held in key tourism areas including **Efate Island, Espiritu Santo, and Aneityum** for tourism operators to be introduced to the guidelines and awareness materials in English, French and Bislama languages.



CENTRAL ISSUES:



No existing guidelines for tourism interactions with turtles in Vanuatu



Tourism operators may not have received turtle-specific training



Limited awareness of the impact of tourism and development on turtles

PROGRAMME ACTIVITY SUMMARY:



Produce new national guidelines for tourism interactions with turtles



Train key tourism operators in the use of the new guidelines



Raise broader awareness of best practice turtle interaction

This publication was produced with the financial support of the European Union. Its contents are the sole responsibility of the SPREP BioScapes Programme and do not necessarily reflect the views of the European Union. Icons: Integration and Application Network (lan.umcs.edu/media-library) and FlatIcon.

The Pacific BioScapes Programme is a European Union (EU) funded action, managed and implemented by the Secretariat of the Pacific Regional Environment Programme (SPREP) www.sprep.org/bioscapes

