

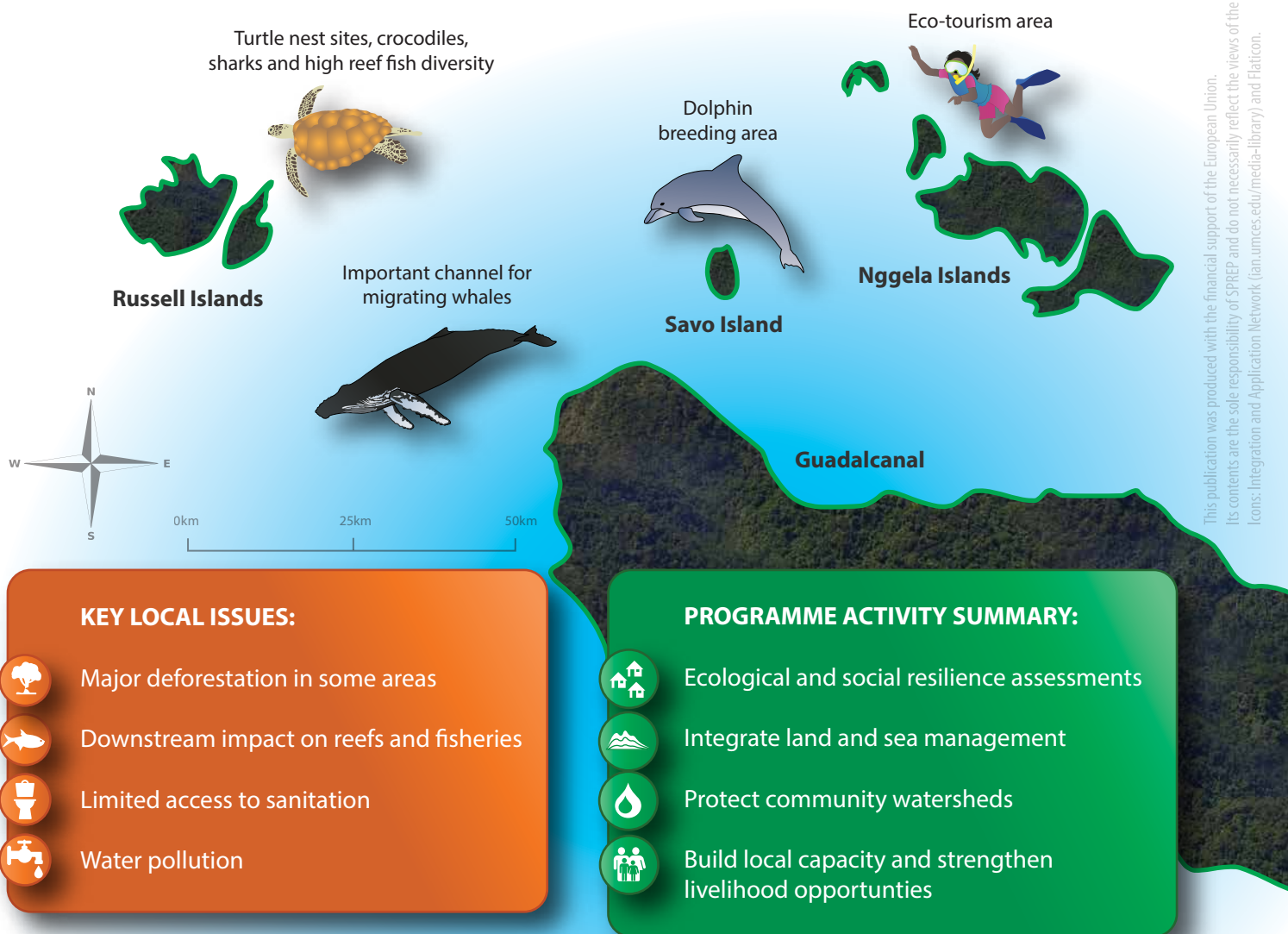


Island and Ocean Management

Pacific BioScapes Programme - Solomon Islands

The Pacific BioScapes Programme aims to **strengthen the protection of key coastal ecosystems** that support climate resilience, livelihoods and the human wellbeing of over 30,000 people in the **Central Islands Province of the Solomon Islands**. This zone is also high in biodiversity and is an important area for many species including dolphins, turtles and whales.

The **Central Islands Provincial Government, Ministry of Environment, Climate Change, Disaster Management and Meteorology** and the **Ministry of Fisheries and Marine Resources** will be supported by the **Wildlife Conservation Society** to design and implement integrated coastal, marine and island conservation and development plans for the seascape. This will include the Russell Islands, Nggela Islands, Savo Island and surrounding marine areas.



This publication was produced with the financial support of the European Union. Its contents are the sole responsibility of SPREP and do not necessarily reflect the views of the European Union. Icons: Integration and Application Network (ian.umces.edu/media-library) and FlatIcon.

The Pacific BioScapes Programme is a European Union (EU) funded action, managed and implemented by the Secretariat of the Pacific Regional Environment Programme (SPREP) www.sprep.org/bioscapes

