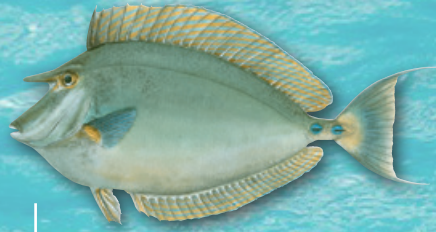


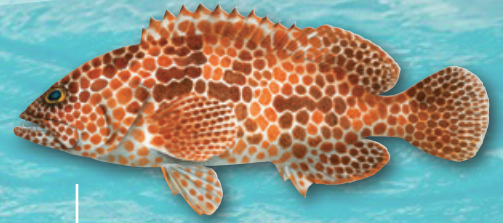
Common reef species in fish reserves of Samoa



Dark-capped parrotfish
Scarus oviceps
Fuga



Bluespine unicornfish
Naso unicornis
Ume



Honeycomb grouper
Epinephelus merra
Gatala



Striated surgeonfish
Ctenochaetus striatus
Pone



Lined surgeonfish
Acanthurus lineatus
Alogo



Convict surgeonfish
Acanthurus triostegus
Manini



Yellowfin surgeonfish
Acanthurus xanthopterus
Palagi



Dash-dot goatfish
Parupeneus barberinus
Tauleia



Thumbprint emperor
Lethrinus harak
Mataleele



Threadfin butterflyfish
Chaetodon auriga
Tiftifi



Little spinefoot
Siganus spinus
Pa'uulu



Goldenlined rabbitfish
Siganus lineatus
Mālava



Goldspotted spinefoot
Siganus punctatus
Tito

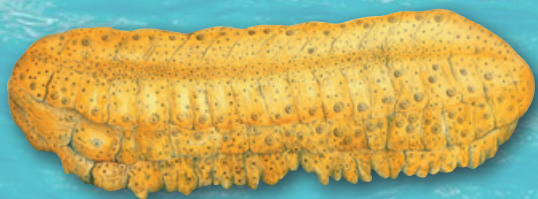
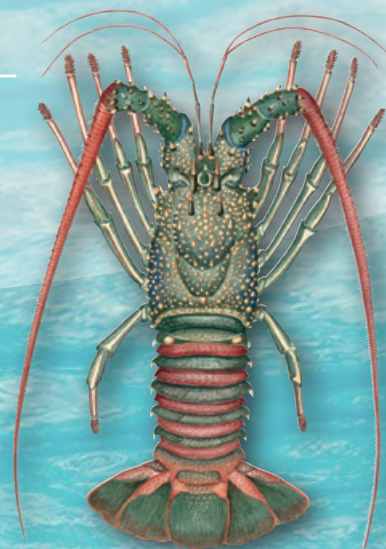


Streamlined spinefoot
Siganus argenteus
Lo



Three-spotted crab
Carpilius maculatus
Kuku

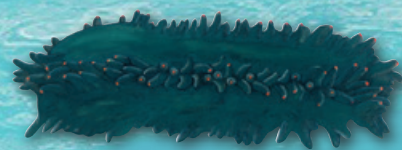
Spiny lobster
Panulirus penicillatus
Ula sami



Curryfish
Stichopus herrmanni
Sea



Brown sandfish
Bohadschia vitiensis
Fugafuga



Greenfish
Stichopus chloronotus
Maisu



Elongate giant clam
Tridacna maxima
Faisua Samoa



Fluted giant clam
Tridacna squamosa
Faisua ta'afua



Giant clam
Tridacna gigas
Faisua tuputele



Smooth giant clam
Tridacna derasa
Faisua manifi



Seagrape
Caulerpa sp.
Limu fuafua



Live corals
Amu



Food and Agriculture
Organization of the
United Nations



Pacific
Community
Communauté
du Pacifique

Photos by Ulusapeti Titii (Seagrapes and corals), Eugene Zeissi (*T. maxima*, CC), Mathieu Juncker (*T. squamosa*), BMR (*T. gigas*) and Nicolas Kietler (*T. derasa*, CC).
Illustrations by Les Hata, Hazel Adams and Rachel O'Shea.
Layout by Boris Colas, © SPC, 2017.