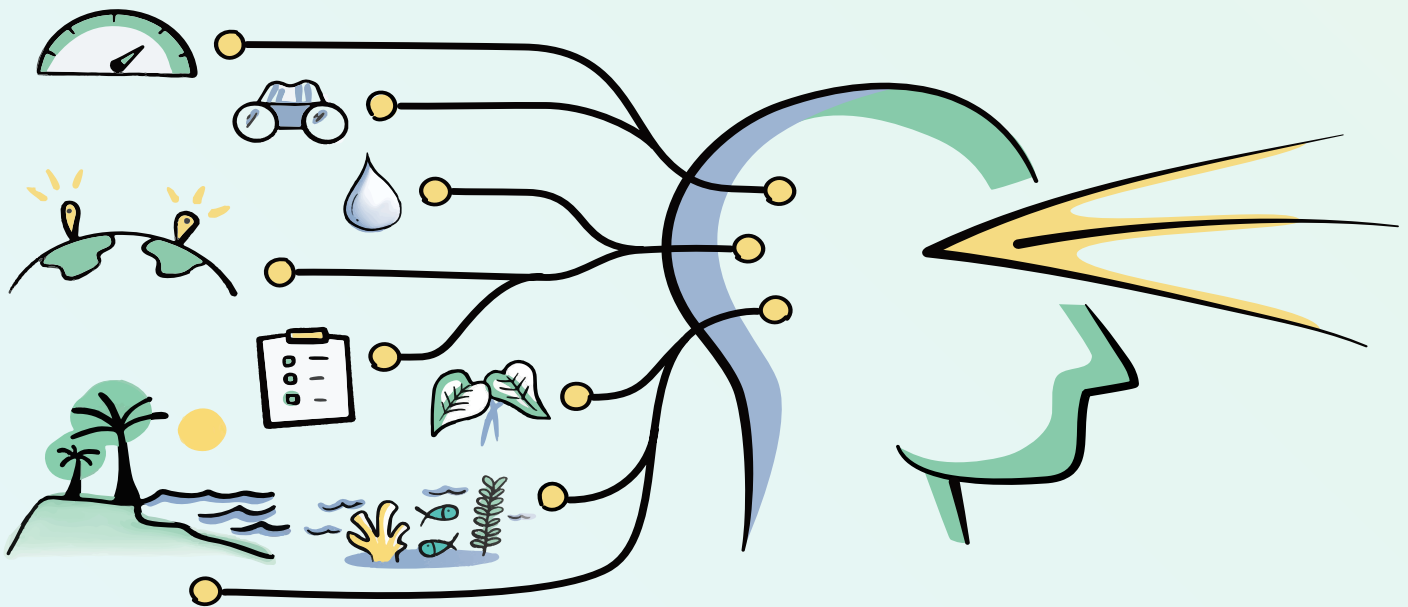


# Impact methodology:

Learning from the past, making sense of impact to inform the future



## Highlights

### April-June 2022

This quarter was about learning through practice with the start of a monthly Series during Earth Week, 21-22 April. The Practice Learning Series (PLS) is about adaptation in practice through an impacts lens focused on four priority sectors key to Pacific resilient development: freshwater security, agriculture, marine resource management and coastal protection.

Segment one in April focused on freshwater security in atolls with case example of Nukuoro atoll, Pohnpei in the Federated States of Micronesia. Mr Winfred Mudong of Micronesia Conservation Trust shared about local innovation strategies with lesson implications on how to measure impact effectiveness of freshwater security interventions in water scarce conditions. Thank you to Fuka Kitekei’aho of Tonga, Teariki Rongo of Cook Islands, Umai Basilius of Palau Conservation Society and Winfred Mudong of Micronesia Conservation Trust for your insightful contribution to the PLS with your experiences in trialling an impacts Analysis (iA) Methodology tailored for the Pacific.

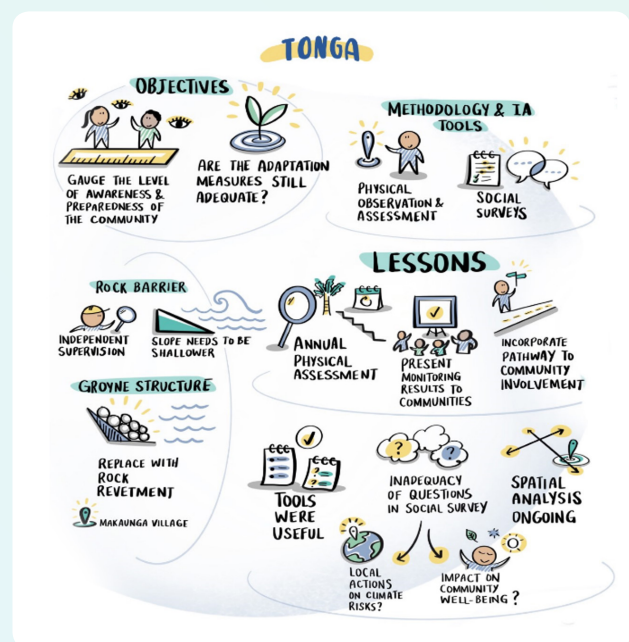


Figure 1. Lessons from the Tonga trial

Segment two in May focused on Tonga's experience with testing the impact assessment tools along Tongatapu coastline. Feedback was sought from practitioners on what constitutes a light version of the iA Methodology. Figure 1 is an infographic of the lessons from the Tonga trial of the iA Methodology.

GCCA+ SUPA 3rd Steering Committee Meeting (SCM) was held on April 27-28.

Read more about the SCM at:

<https://www.sprep.org/news/learning-from-the-past-gcca-sup-a-steering-committee-meeting-forges-path-forward>

Teariki shared the application of the impact assessment tools tailored for the Ra'ui marine conservation and water security measures. Palau team shared their microplastics pollution study with students-teacher clean up monitoring of local beaches.

There is value in sharing available data and information through the PLS as well as reaching out to others with tool orientation sessions. However, nothing replaces one-on-one engagement and connection with people only seen and heard online. First country mission to the Cook Islands in May was to support the field training of the light version of the iA Methodology with the Climate Change Cook Islands team. The training gave the team practiced confidence to apply the Methodology. In addition, an island trip was made to Pa Enea to report back the results of the impact assessment to the people of Mangaia island.



### Climate Change Cook islands and Outer Island officers who participated in the Tool training

SUPA Information & Research officer, Gloria Roma hosted a two-day virtual tool orientation for officers from the Pacific Adaptation to Climate Change and Resilience (PACRES) project about the iA Methodology and the suite of tools used to assess impact of adaptation actions in the Pacific.

The systems developer is now engaged to start the development of the impacts Database.

To know more about the Practice Learning Series, you can access segment summary briefs online either at [gccasupa.org](http://gccasupa.org) or [www.sprep.org](http://www.sprep.org)

Please join the next segment scheduled for **27-28 July**.