



BUZZ

NO.12

JANUARY 2022

INSIDE THIS ISSUE



Message from the JPRISM II Chief Advisor



Dear Colleagues,
I would like to send you my best wishes for a happy and healthy 2022.

Looking back to 2021, we may recall it as the year to add value to our relationship. Even though the world has been struggling against the COVID-19 pandemic, we have joined forces to keep our project up and running as best we can. It was a difficult situation to work as planned, but by using communication technology and your cooperation, we were able to achieve our desired goal.

To our friends and colleagues in the Kingdom of Tonga, we pray for you all as you recover from the effects of the volcanic eruption and tsunami disasters. Stay safe and strong!

While COVID-19 continues to prevail in the world, the current project will end in September this year. However, our commitment to waste management in the Pacific will continue in the next phase. We will start to evaluate the outcome of the current project and design for the next phase soon. I hope we liven up the project in the new year as well.

MIMURA Satoru
Chief Advisor, J-PRISM II



- ◆ PLASTICS RECYCLING MACHINES HAVE ARRIVED IN SAMOA.

PAGES 2

- ◆ GIS MAPPING TRAINING FOR IMPROVED MUNICIPAL SOLID WASTE MANAGEMENT MONITORING IN FIJI

PAGE 3

- ◆ EBeye SOLID WASTE RECYCLING FACILITY CENTER

PAGE 4

- ◆ SAMOA RECYCLING ASSOCIATION'S RECYCLING FACILITY STARTS OPERATION

PAGE 5-6

- ◆ CPRT MEETING HIGHLIGHTS

PAGE 7-9

- ◆ 11TH ICONSWM-CE 2021 & IPLA GLOBAL FORUM 2021 AWARDEES

PAGE 10

- ◆ UPCOMING EVENTS

PAGE 10

Plastics Recycling Machines have arrived in Samoa

Dr. Yoko Onuma
JICA Expert

This year in 2022, the SRWMA (Samoa Recycling & Waste Management Association) and J-PRISM II will begin a pilot project to promote plastic recycling in cooperation with the Samoa Ministry of Natural Resources and Environment (MNRE) and the Secretariat of the Pacific Regional Environment Programme (SPREP). The implementation design for this pilot project has been planned and discussed since 2020, and a brand new crushing machine and an extruder machine was imported from Japan to Samoa last year, and the machine were delivered to SRMWA yard on January 17, 2022. These two wooden boxes are filled with our hopes for the upcoming pilot project, and we look forward to successfully installing and operating the machines in the near future. Stay tuned!



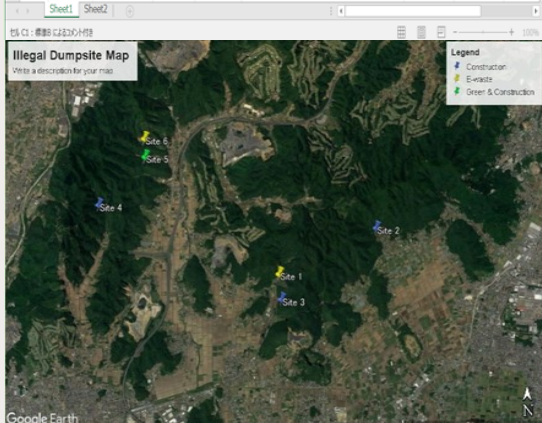
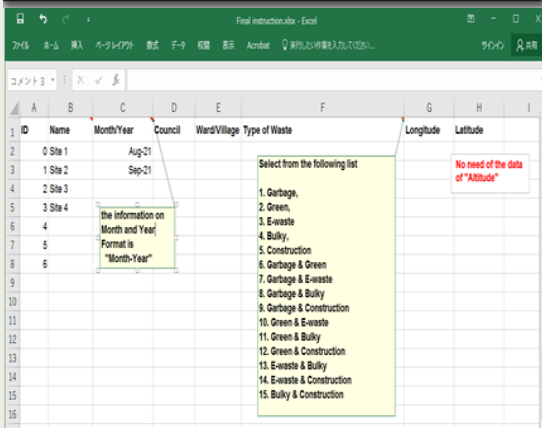
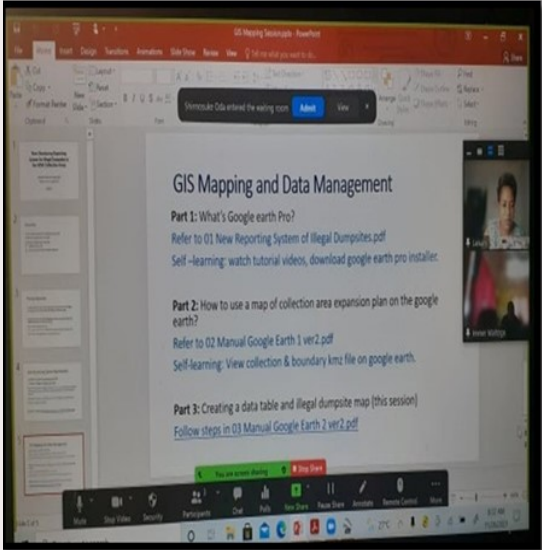
GIS Mapping Training for Improved Municipal Solid Waste Management Monitoring in Fiji

Laisani Lewanavanua
JICA Survey Senior Technical Assistant

The 13 Municipal Councils in Fiji have commenced with basic Geographic Information System (GIS) mapping learning as a step forward in the monitoring reporting system for solid waste management (SWM) activities. The training on “Mapping of illegal dumping locations using GIS” was conducted from September 21st and was completed on December 9th, 2021. Nominated health inspectors and environment officers from each municipal councils were provided with manuals for self-learning and followed by computer-based practical one-on-one session that was held either virtually or face to face.

The main objectives of the GIS mapping training were to provide an understanding of the modified SWM monitoring system requirements for illegal dumping locations in the municipal solid waste collection areas. Currently, only total numbers of illegal dumping places from each municipality were reported. Thus, to improve situation analysis, the councils would be required to submit details including the month/year the dumped waste was reported to their office, locations (address, longitude/latitude) and type of wastes dumped such as garbage, green waste, e-waste, bulky and construction waste. Moreover, developing hands-on skills through practical knowledge on the use of GIS software to prepare maps and an attribute table.

JICA Experts provided technical support using the free GIS software, Google Earth for participants not familiar with GIS. However, with the two municipal councils using other GIS software system, were encouraged to cooperate with their GIS officer for the creation of map and data table. The new monitoring reporting for illegal dumping locations will commence in 2022 on a quarterly basis. This is one of the performance indicators in the Municipal council’s draft SWM Master Plan. The monitoring system is coordinated by the Ministry of Local Government and supported by JPRISM II. The use of the GIS software as a tool in SWM can facilitate communication and mutual understanding of the SWM situation at local and national level. Moreover, can support decision making in the planning of waste collection and disposal. Ongoing technical support will be provided by JICA experts until end of project. The improvement of SWM monitoring system is a component of JPRISM II - Output 1 for Fiji.



Solid Waste-Recycling in EBeye

Morrine Beterre

Solid Waste Management Coordinator, (KALGOV) Koror State Government

A joyous and excitement roam around the islands when the news of two balers coming in for the first time in a long time. Ebeye community spirit was lifted as if there was a huge weight on their shoulder. People have been collecting PETs bottle and Cans when they heard there would be a recycling center opening soon at Ebeye Solid Waste.

Therefore we had to set up the redemption site step by step. Our first step was to attend training at Majuro Atoll Waste Company (MAWC) to gain more knowledge on how to run a recycling center. Sadly, our machines were not the same. MAWC has the biggest press machine and Ebeye had the smaller ones that can only press up to 100 cans. However, we did not just focused on the press machines but we tend to learn how the financing, counting, customer service and most importantly safety works.

Although the balers could only press 100 cans, people came in with 3000 max counting of cans for each customer. Our recycling site was opened on June 25th 2021 and closed on August 3rd 2021 due to motor issues. We are currently waiting on parts to re-open our redemption site. The reason why we are facing this issue is because when we first started, we were pressing PET bottles although we were not supposed to because the press machine could only press cans and not PET's bottle.

Moreover, Ebeye Solid waste had spent \$4,725.25 to buy PETs and cans from the community. Even though the machines are down, the community is still collecting PET's bottle and aluminum cans and store it in their property for the re-opening the of the recycling center.



Samoa Recycling Association's Recycling Facility Starts Operation

Dr. Yoko Onuma
JICA Expert

On 24th November 2021, The Samoa recycling association's recycling facility is funded by Embassy of Japan with the official handing over ceremony done on Wednesday with the Counsellor Tsukada Kazuo, the Ministry of Natural Resources and Environment C.E.O. Frances Reupena-Brown and various stakeholders and members of the diplomatic corps in attendance.

This recycling facility will be used for processing recyclable wastes and operating of recycling machinery for the implementation of SRWMA and J-PRISM pilot project on Plastic recycling starting from this year. SRWMA was given a grant of SAT\$477,097 (USD 190,123) in March 2021 provided to them under Japan's Grant Assistance for Grass-Roots Human Security Projects (G.G.P).

It is important for the recycling associations in the Pacific, which are independently operated by recyclers in each country, to have their own facility and to create a work space where we can jointly carry out projects as an organization, said Marina Keil, President of SRWMA, speaking at the handing over ceremony. For this recycling facility construction project, J-PRISM supported the application document preparation, architectural design cost support, the pilot project implementation planning on plastics and coordination with other donors. It is a great honor for us to be able to successfully support building a facility that can be used by all members of the recycling association.

Continued next page...





Continued from previous page...

This SRWMA recycling facility construction project is the second project that the Embassy of Japan has provided support to the waste management sector in Samoa, but the Embassy of Japan has supported various projects to the waste management sector to each country in the Pacific for a long time since the early 2000s. In this article, we will introduce the projects supported by the schemes of the Embassy of Japan in the waste management field in the JPRISM target countries for the last three years in the following performance table.

	2019	2020	2021	Remarks
Waste Collection Vehicles (HCC, Solomon)	■			Cooperation with JPRISM
Waste Collection Vehicles (Kosrae, FSM)	■			Cooperation with JPRISM
Waste Collection Vehicles (Chuuk, FSM)	■			Cooperation with JPRISM
Recycling Facility (SRWMA, Samoa)		■		Cooperation with JPRISM
Recycling Center (Pohnpei, FSM)		■		Cooperation with JPRISM
Compressor for Aluminum can (Pohnpei, FSM)		■		Cooperation with JPRISM
Compressor for Aluminum can (Chuuk, FSM)		■		Cooperation with JPRISM
Waste Collection Vehicles (Vava'u, Tonga)		■		Cooperation with JPRISM
Waste Collection Vehicles (Kosrae, FSM)		■		Cooperation with JPRISM
Waste Collection Vehicles (Chuuk, FSM)		■		Cooperation with JPRISM
Waste Collection Vehicles (Yap, FSM)		■		Cooperation with JPRISM
Compressor for Cardboard (BPW, Palau)		■		
Waste Collection Vehicles and Heavy Machineries (Port Vila, Vanuatu)		■		
Waste Collection Vehicles (Pohnpei, FSM)			■	Cooperation with JPRISM

Table: List of Equipment Provided by Embassy of Japan for the Last Three Years

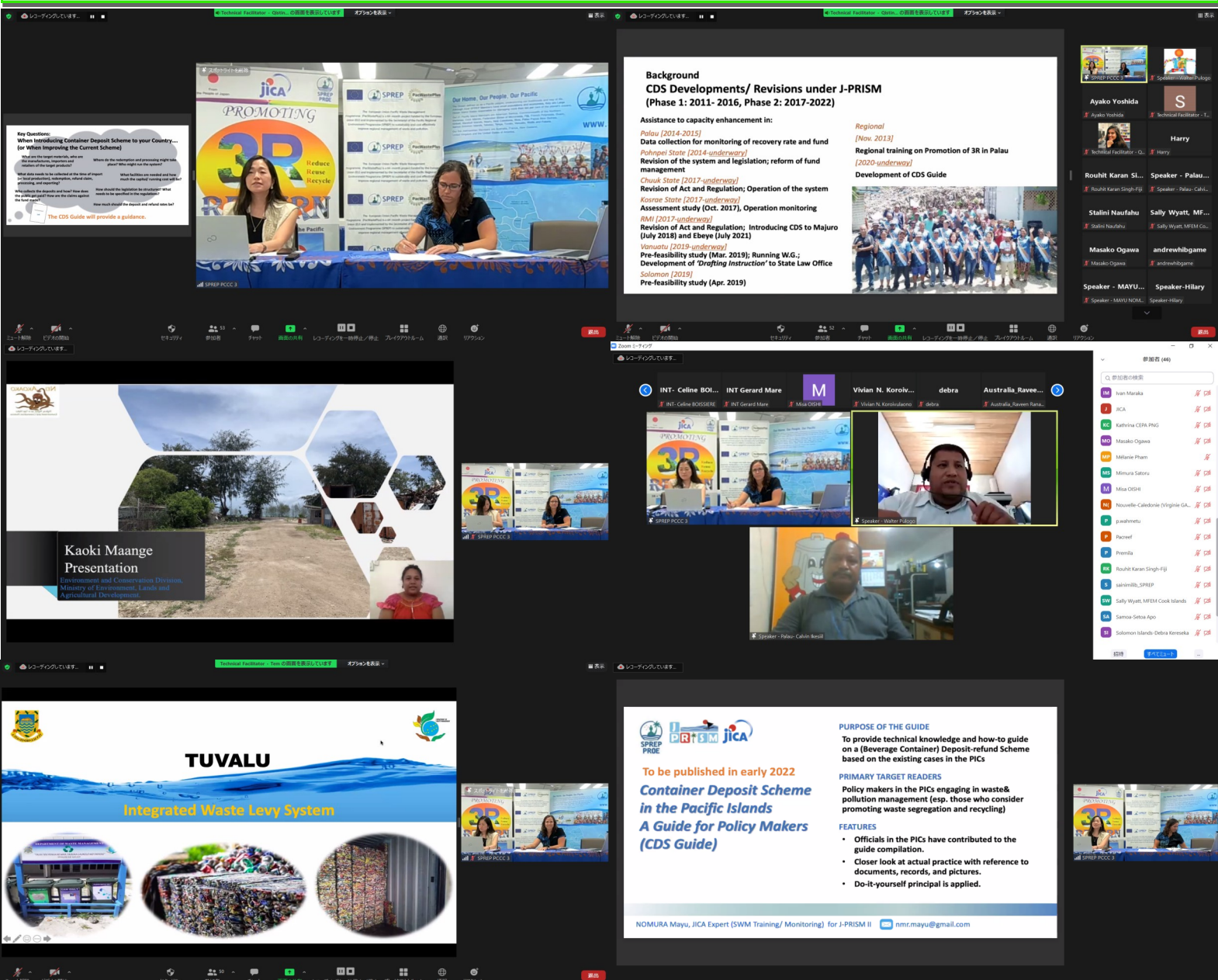
CPRT Meeting Highlights

Mayu Nomura
JICA Expert

• **Side Event: Sustainable Financing**

The country practice regarding the Container Deposit Scheme were presented by Mr. Calvin, Ms. Christina, and Ms. Jacqueline from the J-PRISM II member countries (Palau, Yap State, RMI) as well as Tuvalu and Kiribati. It was one of the remarkable achievements for RMI to put the CDS legislations into practice in August 2018, which has been well operated achieving over 100 % of redemption rate for the first year of its operation and expanded to the second biggest populous area, Kwajalein atoll island. CDS in Palau, started 10 years ago, has made some changes to its system for further material recovery by lifting the size restrictions on the target beverage containers, operating another Redemption Center, and so forth. The session attracted over 50 participants online provided a great platform to exchange experiences among the PICs.

As introduced in the session, the CDS Policy Makers Guide with Case Studies is under development by J-PRISM II Regional Project in cooperation with the countries, which will soon be available in this March. We hope that this guide assists the officials with self-studying the applicability of CDS and designing its system that fits to their countries.



CPRT Meeting Highlights

Faafetai Sagapolutele
JPRISM II Assistant Chief Advisor

- Side Event: Disaster Waste Management Panel Discussion**

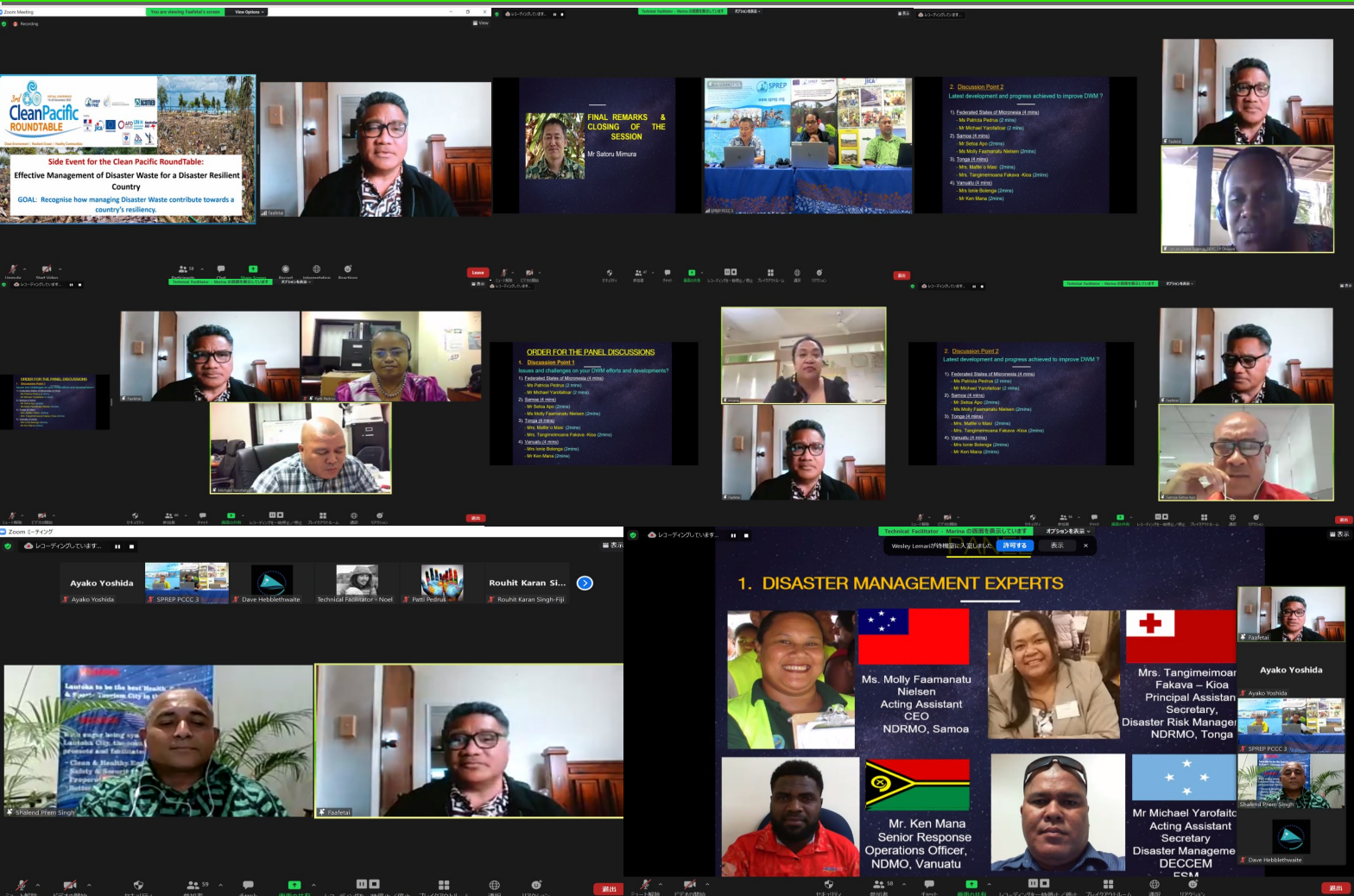
Senior Officials of both the National Disaster Management Offices and Waste Management Agencies in Samoa, Tonga, Vanuatu and FSM participated in a Panel discussion to share issues and challenges affecting their efforts in Disaster Waste Management (DWM), as well as any positive progresses achieved. The Chair of the Regional DWM Technical Working Group, Mr. Shalend Singh from Fiji, made an introductory presentation, before the feedback from the participating countries officials. Tonga has made good progress with the inclusion of DWM in the country's National Disaster Management organizational structure.

According to Mrs. Tangimeimoana Fakava Kioa, the Principal Assistant Secretary of Tonga's National Disaster Management Agency, Tonga commenced such integration after the sub-regional DWM Training in Samoa in 2018.

Mrs. Mafile'o Masi as the Head of Tonga's Waste Management Unit under MEIDECC, confirmed the progress with the inclusion of DWM as a sub-cluster under the WASH Cluster.

Mrs. Ionie Bolenga of Vanuatu DEPC and Mr. Ken Mana of Vanuatu NDMO, along with Mr. Setoa Apo of MNRE, Samoa, confirmed ongoing discussions for a similar outcome for Vanuatu and Samoa.

FSM on the other hand, requested the support from JPRISM II to guide FSM in achieving such a critical integration for the improvement of DWM in FSM.



CPRT Meeting Highlights

Dr. Yoko Onuma
JICA Expert

- **CONSULTATION SESSION: Pacific Islands 3R+Return Advocates**

In this session, which was held on the last day of the CPRT meeting, under the subtitle of "Introduce activities and future visions of Recycling Associations in the Pacific, identify current issues, and strengthen the network", each recycling association's activities were introduced by the presidents of the recycling associations of the five countries that J-PRISM II is now supporting to establish and implement their activities.

VRWMA (Vanuatu Recycling & Waste Management Association) introduced their vision, diverse membership, and website development. Also, they reported a big milestone that they exported 14 million PET bottles collected, to Australia in their first collection campaign activity "Plastic bottle buyback" held in June 2021 in partnership with World Vision, Australian government and ANZ bank.

PNGWMR (PNG Waste Management & Recycling Association) shared their first meeting was held and the interim executive members were elected in June 2021. *(In December 2021 after the CPRT meeting this association has been officially registered with the PNG Government)*. In 2022, PNGWMR will hold the first annual general meeting.

SIRWMA (Solomon Recycling & Waste Management Association) reported that it completed the formulation of the SIRWMA Strategic Plan 2021-2030 in February 2021 and held the launch event by gathering relevant stakeholders and donors. The next step is to carry out activities based on this strategy.

SRWMA (Samoa Recycling & Waste Management Association) introduced a 10-minute video summarizing what and how the target wastes are being treated in their facility and what their challenges are.

TRA (Tonga Recycling & Waste Management Association) had begun discussions on the establishment of the association in 2021, electing provisional officers and reporting that it is preparing for a launch event to establish the association in 2022.

The conclusion of this session was that as the consensus of the 5 recycling associations is to strengthen the recyclers network in the Pacific and to establish regional recycling association in the Pacific and enhance each country's recycling capacity.

You can find out more about the CPRT meeting via link: [CPRT Meeting 2021](#). You can access session recordings on the same link.



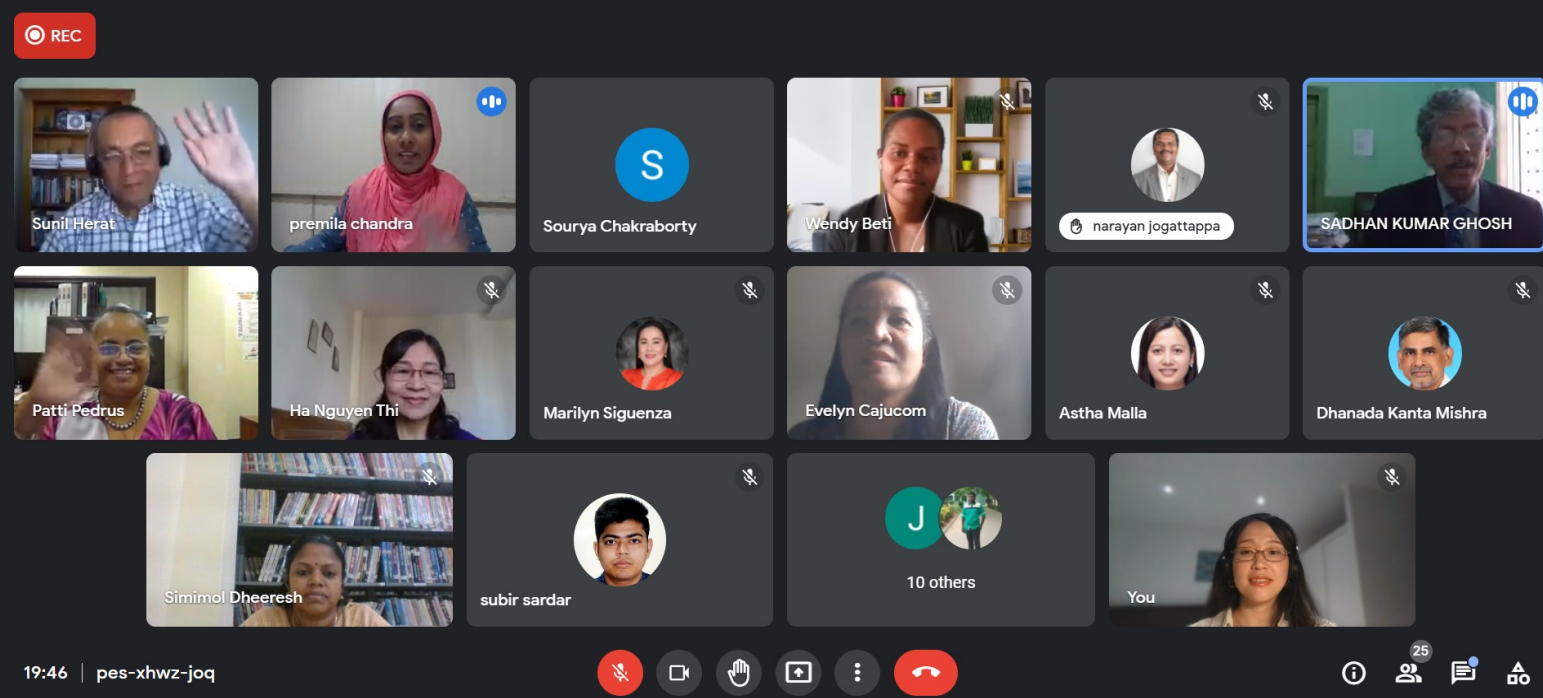
11th IconSWM-CE 2021 & IPLA Global

The 11th International Conference on Sustainable Waste Management and Circular Economy & IPLA Global Forum 2021 was held virtually on December 1st, 2021 in collaboration with the International Society of Waste Management, Air and Water (ISWMAW). Two of our own and 37 others, were recipients of the IConSWM-CE Excellence Award 2021 for the best papers presented during the Conference.

Ms. Mayu Nomura, who is the Solid Waste Management Training & Monitoring Expert for JPRISM II Project was recognized for her presentation on the topic “Container Deposit Scheme (CDS) in the Pacific Islands” and the JPRISM CDS Guide.

Ms. Patricia Pedrus, who is the Deputy Assistant Secretary, Waste Management & Pollution Control Unit, from the Federated States of Micronesia received recognition for her presentation on the “Overview of Waste Management in the Federated States of Micronesia”

Well done and Congratulations Ms. Mayu & Ms. Patricia!



Upcoming Events

- ◆ **GLOBAL RECYCLING DAY MARCH 18TH 2022**
- ◆ **VRWMA DONOR DIALOGUE MARCH 3RD 2022**
- ◆ **REGIONAL TRAINING FOR VEHICLE & HEAVY MACHINERY MARCH 2022**

Project Office Members

Chief Advisor: Mimura Satoru
Assistant Chief Advisor: Faafetai Sagapolutele
Regional Cooperation/Project Coordinator: Ayako Yoshida
Solid Waste Management Training & Monitoring: Mayu Nomura
3R+Return/Monitoring: Dr. Yoko Onuma
Project Assistant: Evangeline Potifara
Website: <https://www.sprep.org/j-prism-2/home>

J-PRISM II PROJECT OFFICE

Secretariat of the Pacific Regional Environment Programme (SPREP)
P.O.Box 240, Vailima
Apia, Samoa

