



SAT-NC

Marine turtle satellite tracking in
New Caledonia



Marc Oremus – 30th July
2021

Context



Several major nesting sites in New Caledonia

Green turtles :

- d'Entrecasteaux : 50 000 clutches/year (Girondot et Fretey 2018)
- Chesterfield/Bellona : > 15 000 c/y (Girondot et Fretey 2018)
- Ouvéa/Beautemps Beaupré : 200 to 600 c/y (Bo pers. comm.)



Loggerhead turtles :

- La Roche Percée : 200 to 300 c/y (Bwära TM unpublished)



- Grand Lagon Sud : > 200 c/y (Bwära TM unpublished)



New Caledonia
has a major role
to play in the
conservation of
marine turtles in
the South Pacific



Knowledge on connectivity with feeding grounds

→ based on flipper tags recaptures

Green turtles : connexion to 3 countries

D'Entrecasteaux to Australia (n = 37) / PNG (n = 1) / NC (n = 8) (Read et al. 2014).

Loggerhead turtles : connexion to Australia only

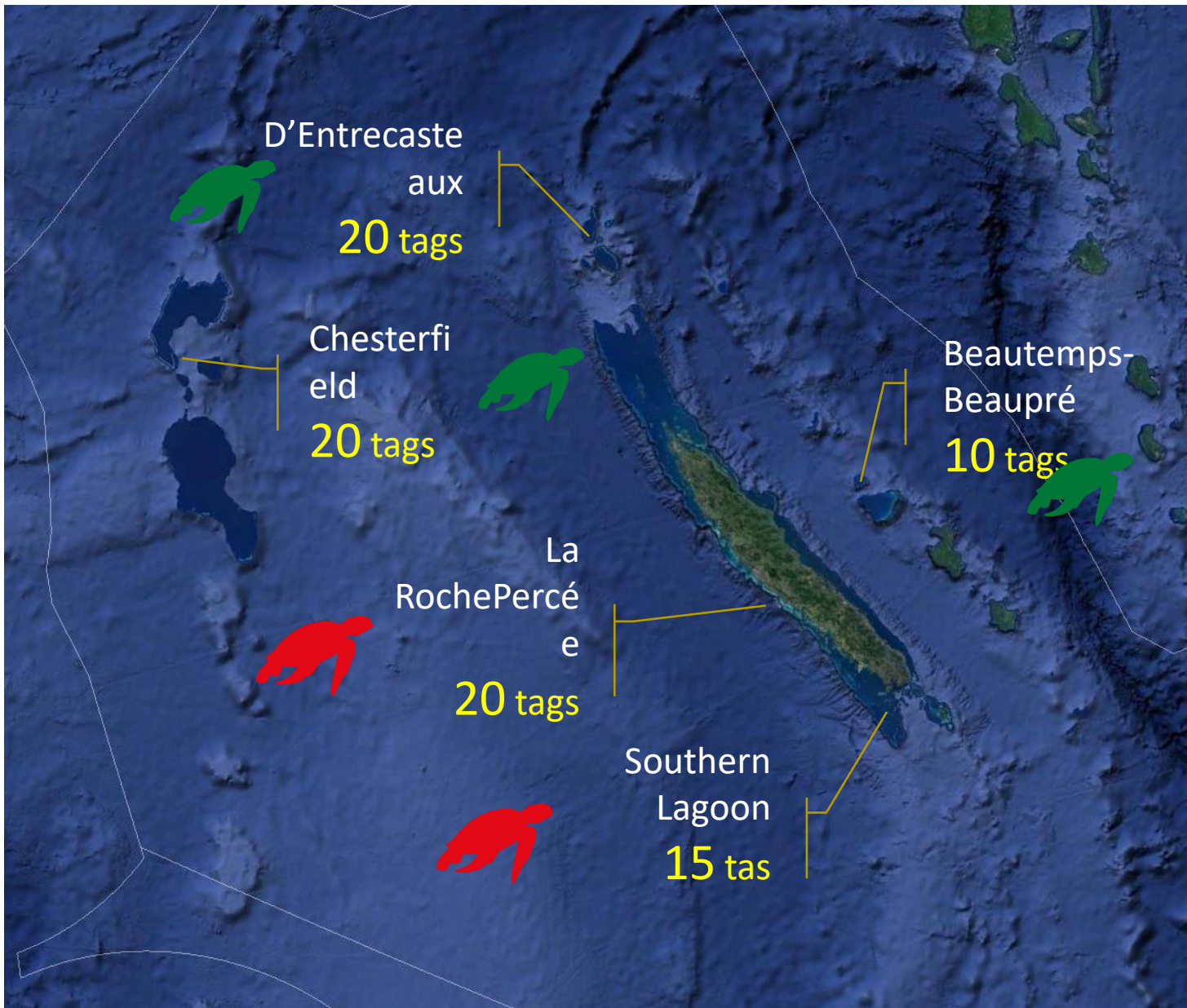
La Roche Percée to Australia (n = 6) (Limpus pers. comm.)

Objectives

- Confirm main regional stakeholders
- Identify key habitats and primary threats



DAM-A.Fourrain



85 tags

5 sites

Progress to date



69 tags deployed

+ 6 historic tracks

Post-nesting females only

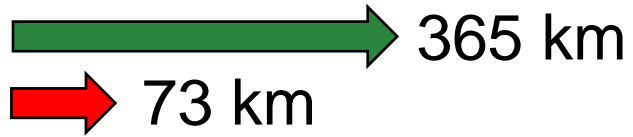
10-15 more to go (GLS and Ouvéa)

90% complete migration

Distances and speed



Minimum distance



54 km/d

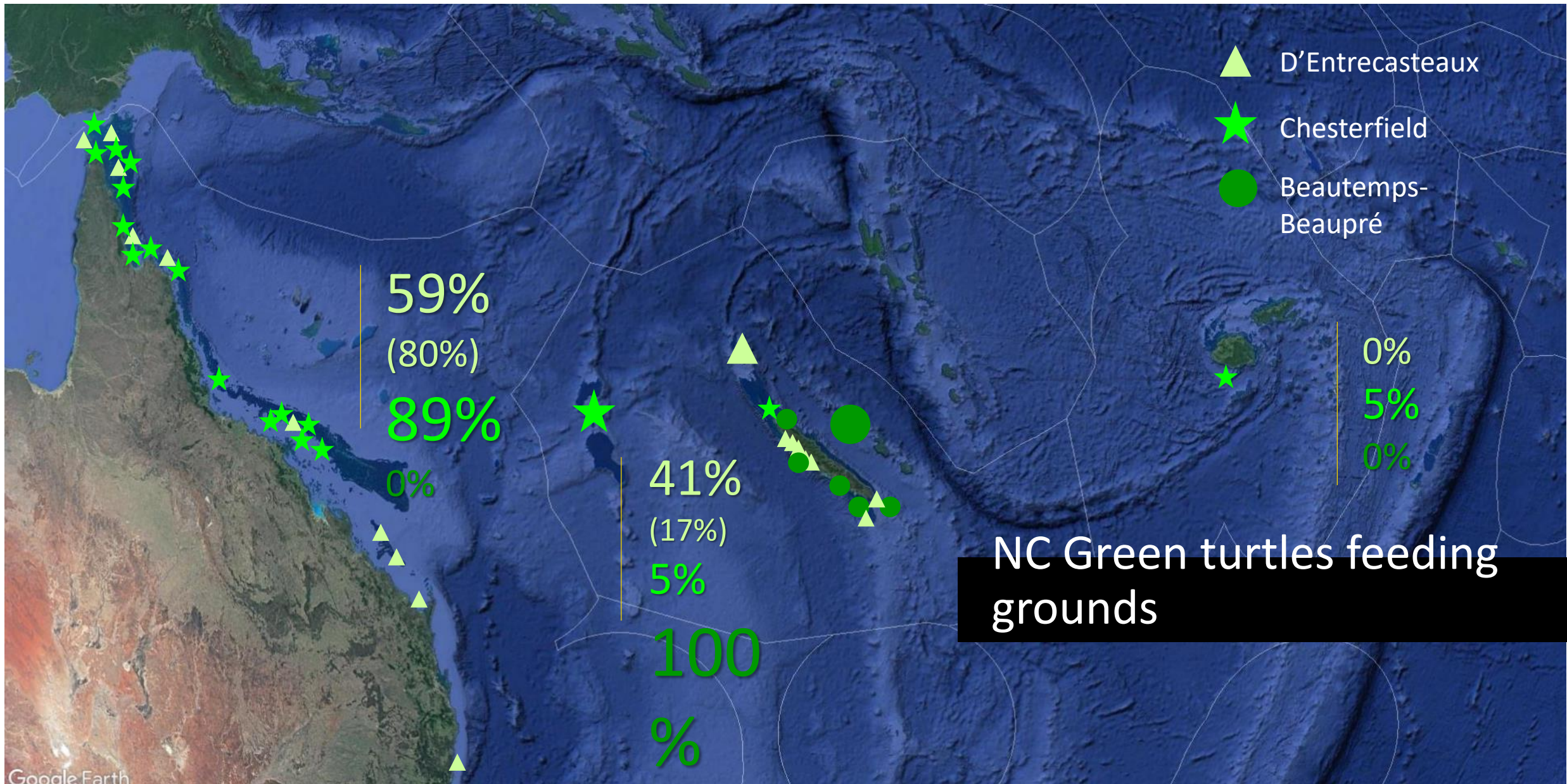
46 km/d

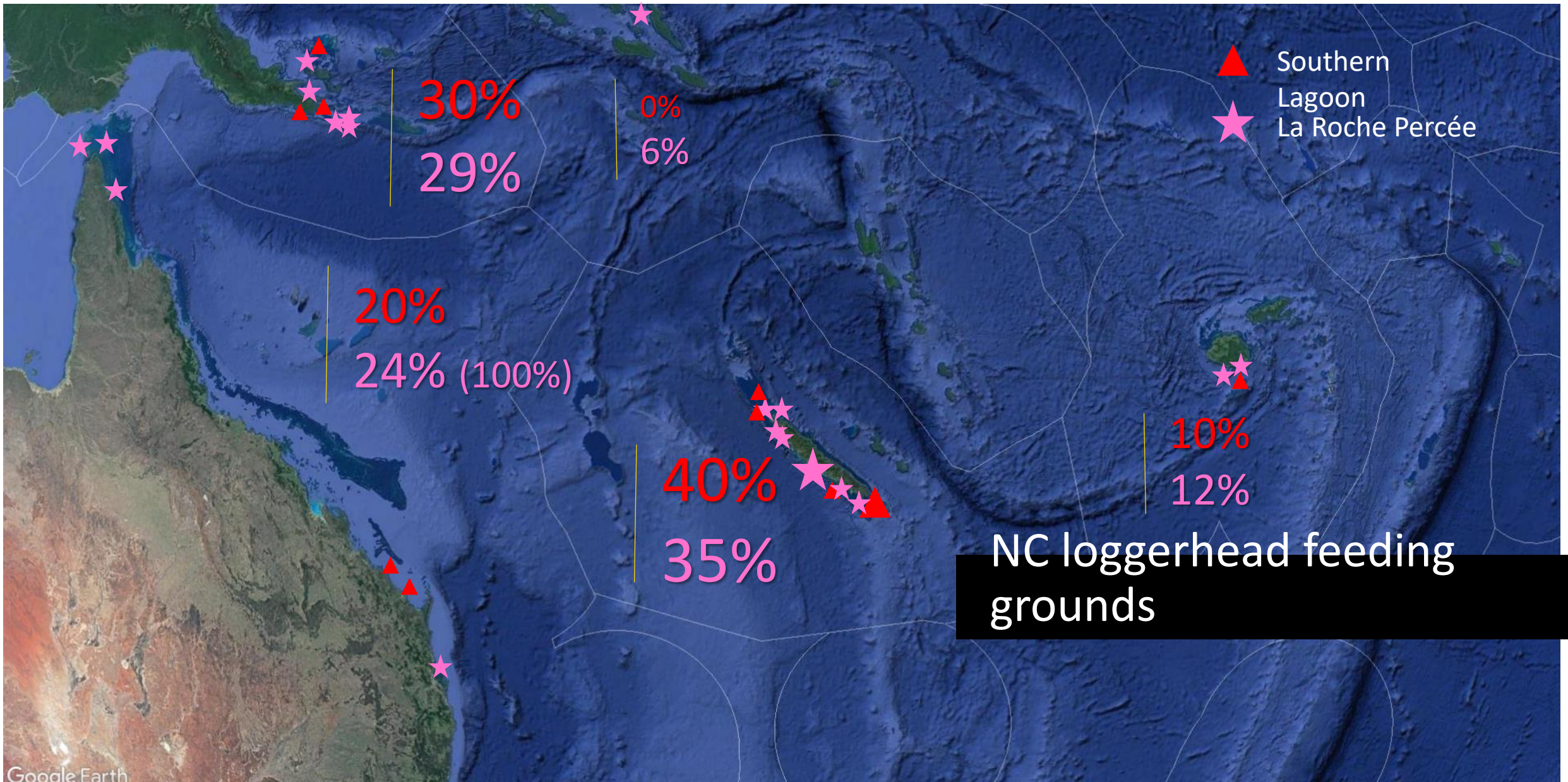
Average distance



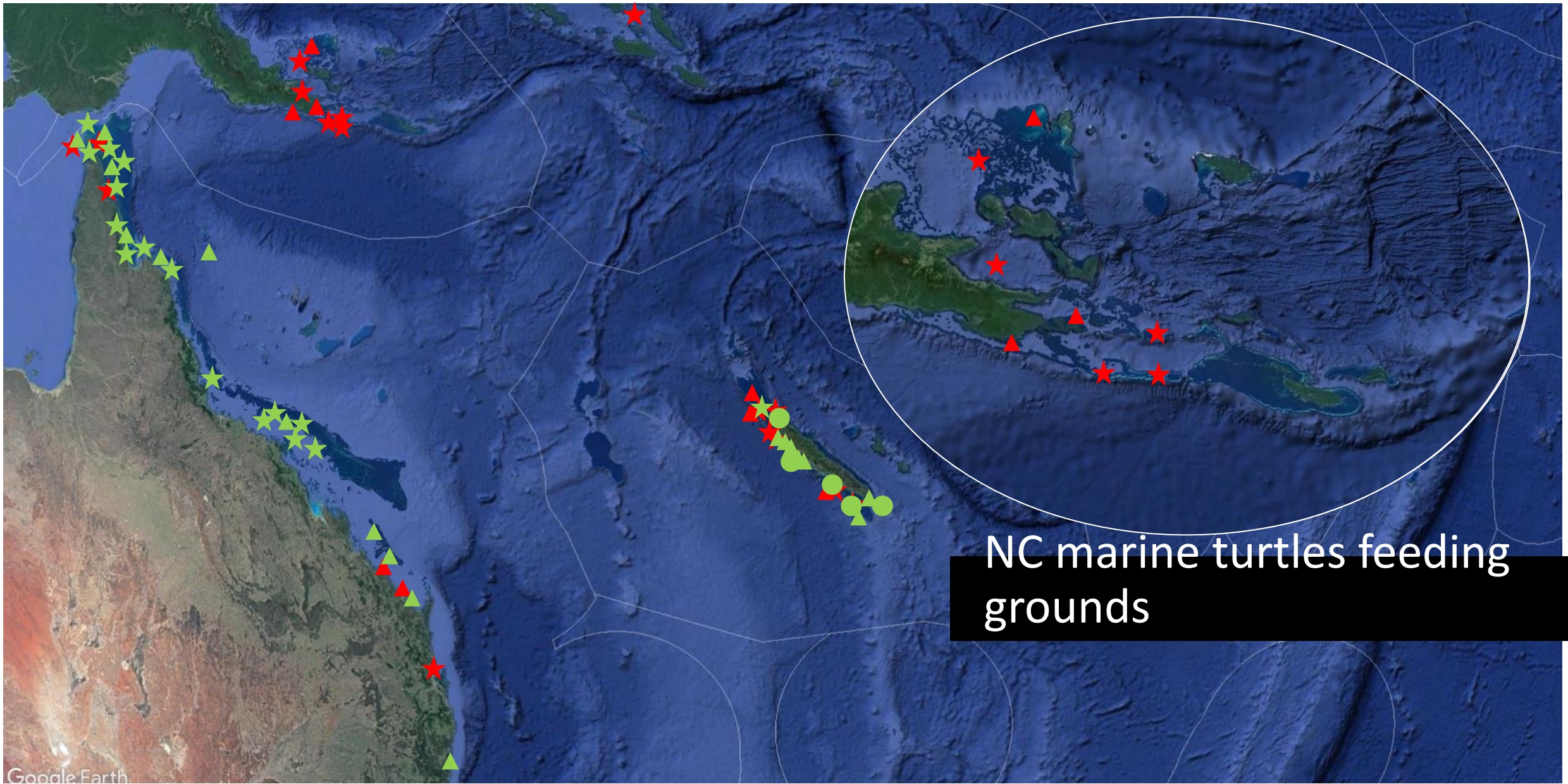
Maximum distance





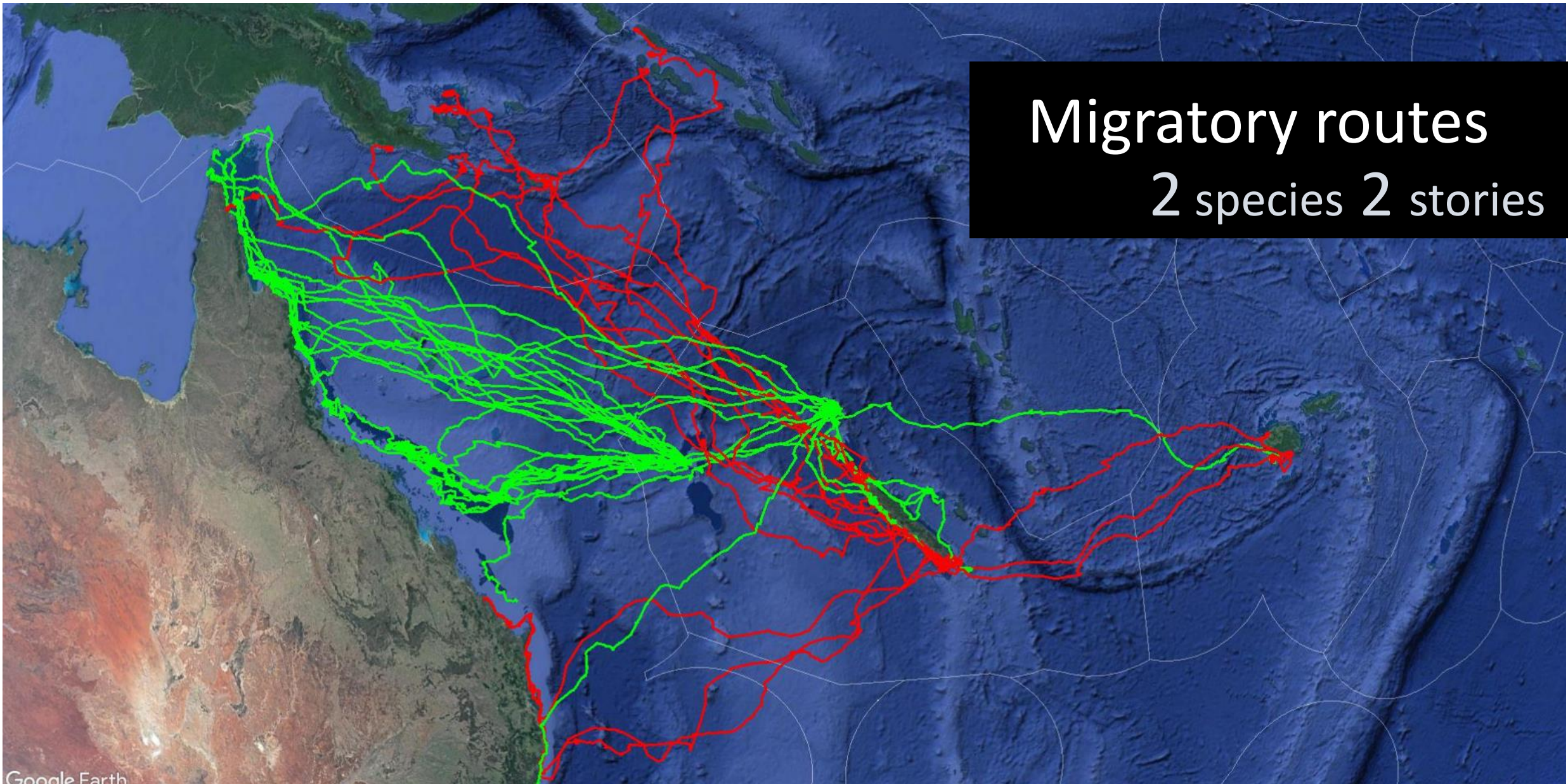


Google Earth

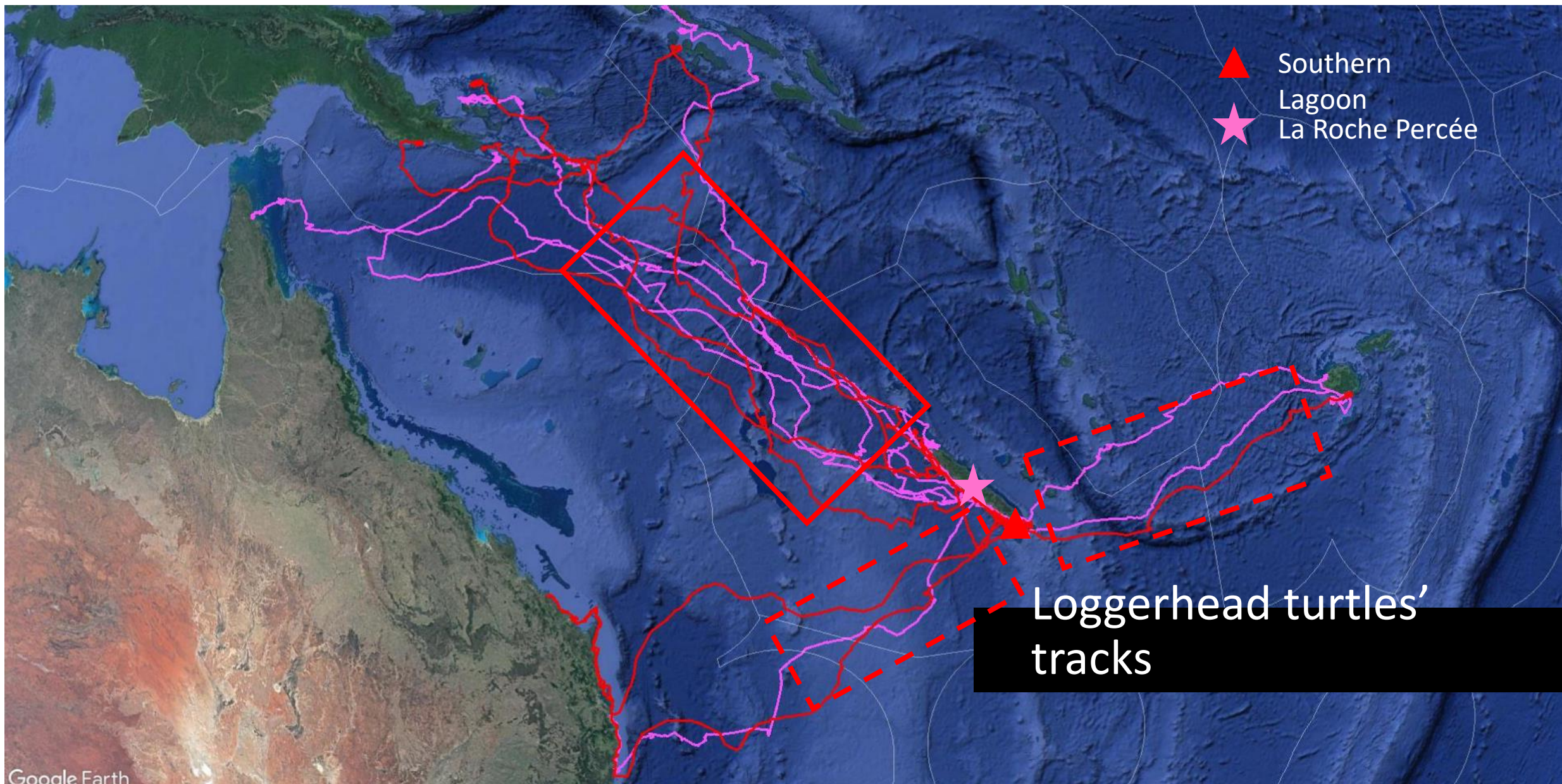


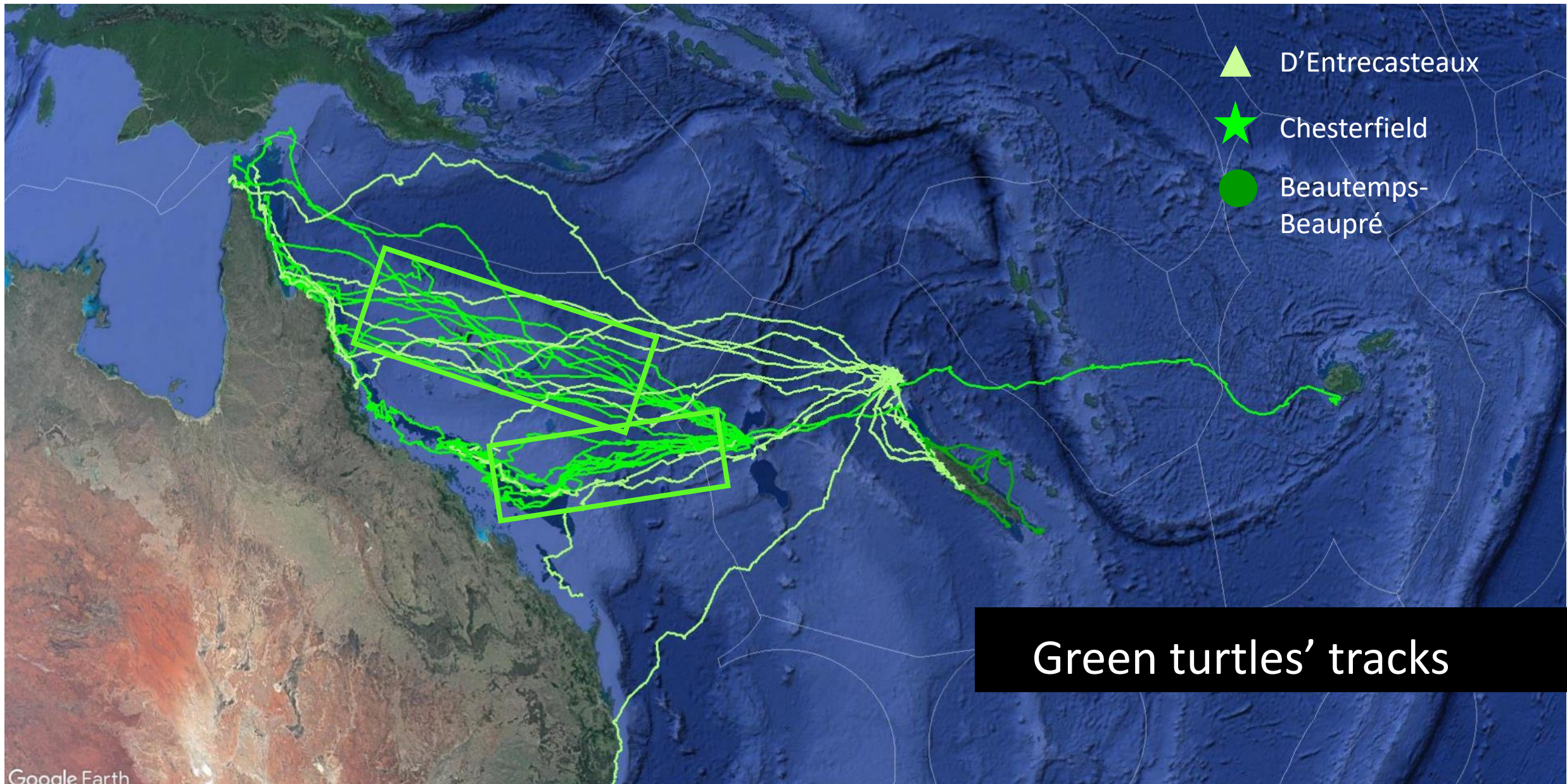
Migratory routes

2 species 2 stories



Google Earth





Conclusions

- ✓ Successful collaborative project
- ✓ Primary stakeholders identified
- ✓ Several key habitats localised

Next steps :

- Final tag deployments
- Threat analyses
- Reports and communication
- Advocacy work





Thanks !



Working to sustain the natural world for the benefit of people and wildlife.

together possible™ panda.org