

An aerial photograph of a river winding through a lush, green forested valley. The river is light-colored, possibly due to sand or silt, and flows from the upper left towards the lower right. The surrounding forest is dense and dark green. The image is framed within a circular vignette.

**SOVI BASIN
PROTECTED
AREA**

GEFPAS4

**NATIONAL
STEERING
COMMITTEE
MEETING
06 FEBRUARY
2015**

**E.ERASITO
DIRECTOR
NATIONAL
TRUST OF FIJI**



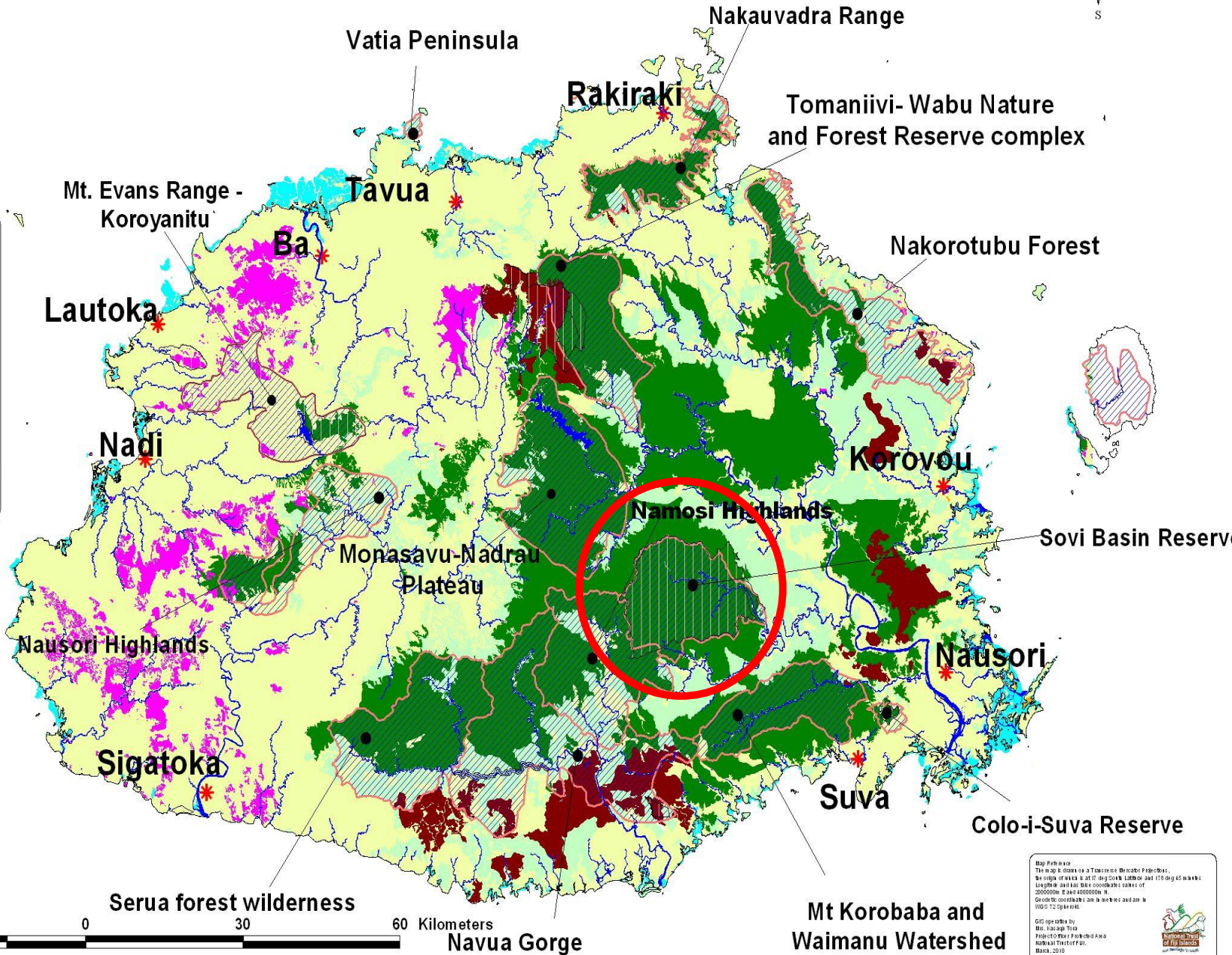
KBA AND PA MAPS WITH FOREST COVER



LEGEND

Forest Cover

- Closed Forest
- Coconut
- Hardwood Plantations
- Mangroves
- Non Forest
- Open Forest
- Pine Plantations
- Water Body
- Protected Areas
- Key Biodiversity Areas
- * Towns



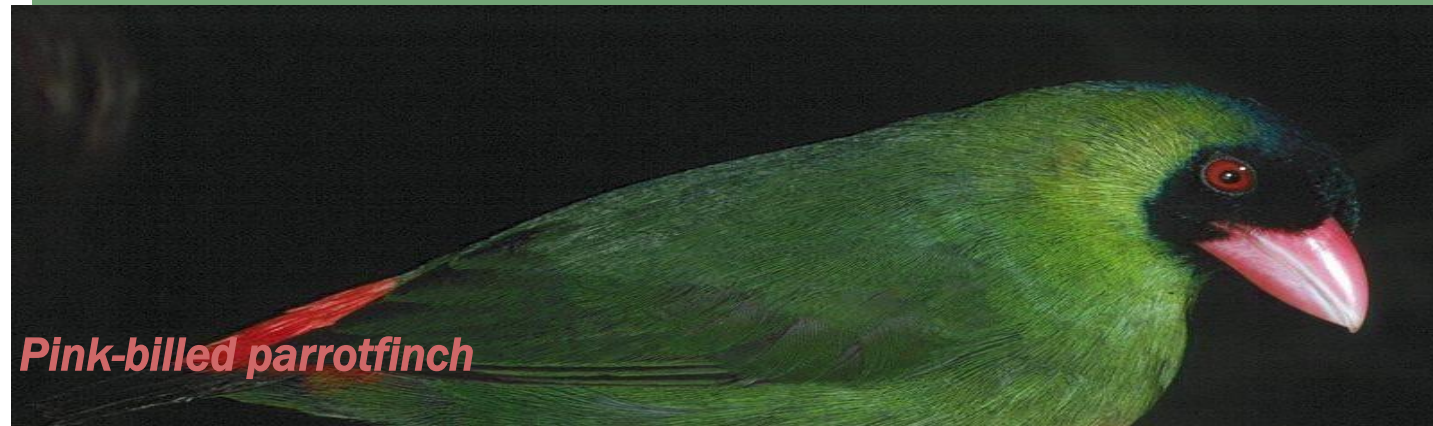
30 0 30 60 Kilometers

Map Prepared by:
 The Ministry of Conservation and Environment
 The map is based on a Topographic Map of Vanuatu, 1:50,000 scale, published by the Ministry of Conservation and Environment, Vanuatu, 2010.
 The map is based on a Topographic Map of Vanuatu, 1:50,000 scale, published by the Ministry of Conservation and Environment, Vanuatu, 2010.
 The map is based on a Topographic Map of Vanuatu, 1:50,000 scale, published by the Ministry of Conservation and Environment, Vanuatu, 2010.
 The map is based on a Topographic Map of Vanuatu, 1:50,000 scale, published by the Ministry of Conservation and Environment, Vanuatu, 2010.

At REGIONAL LEVEL:

- Most biologically diverse terrestrial ecosystem in the entire **Polynesia/Micronesia Hotspot**
- CEPF Sub-regional Profile analysis for Fiji classified Sovi Basin the highest priority landscape conservation outcome in Fiji.
- on the tentative World Heritage List-
UNESCO World Heritage Declaration

**Sovi
Basin
PA**



Pink-billed parrotfinch

AT NATIONAL LEVEL

- Site of National Significance (NBSAP 2010)
- Fiji's largest terrestrial protected area (16300ha)
- Fiji's largest surveyed and registered land under lease with Taukei Lands Trust Board (99 year lease)
- The first PA with sustainable financing mechanism in place



Fiji ground frog



Long legged warbler

Sovi
Basin
PA

- **Supports strategy to develop forest corridor on main island of Viti Levu.**
- **Fiji's most important terrestrial ecosystem in terms of biological & landscape heritage.**
- **The Basin is home to endemic birds, plants, freshwater plants and fish & herpetofauna**
- **Remaining largest undisturbed block of tropical lowland forest.**

**WHY
PROTECT
Sovi**

PLANTS

- 660 species
- 46% endemic
- 29 species rare or endangered



BIRDS

- 34 species
- 43% endemic
- 3 species endemic to Viti Levu
- 5 species threatened



FRESH WATER PRAWNS & FISH

- 12 species of freshwater fish.
- 2 endemic.
- 11 native.
- 1 introduced.
- 6 species of freshwater prawns.



HERPETOFAUNA

MAMMALS

- 3 species of skinks.
- 1 species of gecko.
- Tree frog.
- Cane toad.
- Pacific Boa
- 2 fruit bats.
- 1 species of gecko.
- 1 blossom bat.
- Wild pig



MANAGEMENT ARRANGEMENT

- Initial community consultation & Ground work on Trust Fund carried out by Conservation International (CI), DoForestry, USP, iTaukeiAffairs
- CI works with local partner – National Trust of Fiji (NTF) to build capacity and support for natural heritage
- Lease of Sovi PA issued to NTF
- NTF takes lead role in PA management and community liaison once lease is issued
- NTF manage the Sovi Basin Endowment Trust Fund

ENDOWMENT TRUST FUND

- To sustainably finance the conservation of the Sovi Basin PA for 99yrs

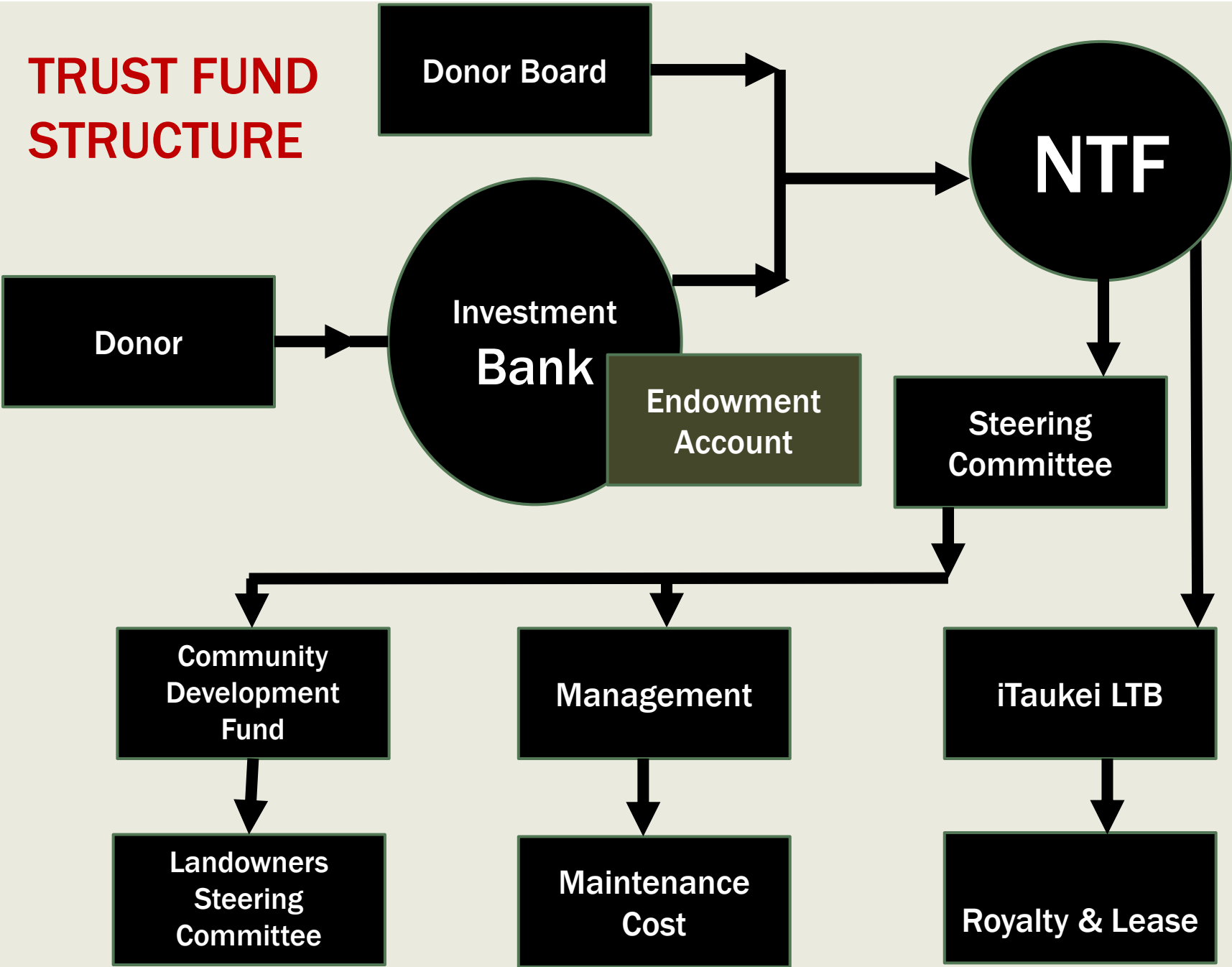
ENDOWMENT TRUST FUND

- **Capitalisation : \$3.626m USD**
 - Donors –
 - Global Conservation Fund,
 - Fiji Water Foundation,
 - GEFPAS4 (FAO- negotiation in progress)

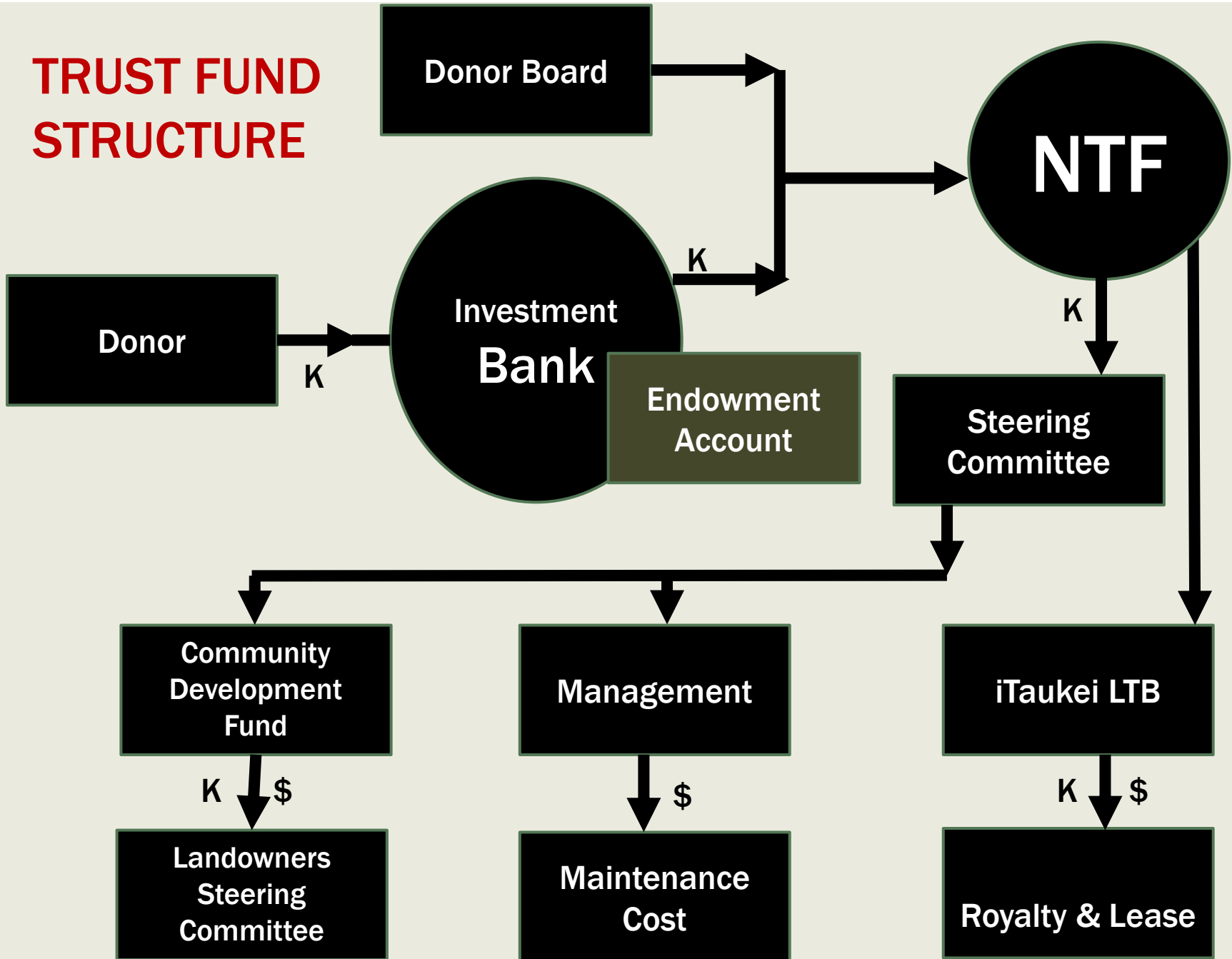
- **The Trust Fund supports three broad cost categories:**
 1. Annual royalty and lease payments to SBPA landowners
 2. Annual contributions to a Community Conservation and Development Fund
 3. Management budget for the Natural Heritage Unit.

- **An innovative mechanism for conserving habitat while providing economic and social benefits for stakeholders including local communities and public/private sectors.**

TRUST FUND STRUCTURE



TRUST FUND STRUCTURE



GEFPAS 4 & SBPA

- **Contribution to Trust Fund**
 - us\$225,000
 - Direct deposit to HSBC (Singapore)
 - Govt. Support needed
 - Documentation from FAO to facilitate deposit
- **SBPA Graphic Design of Management Plan (FJ\$3,000)**
- **Ecotourism Study (FJ\$10,000)**
- **Bio-RAP (negotiation in progress - USP)**
- **Video documentary (negotiation in progress – PSA)**

STATUS OF SOVI BASIN MANAGEMENT

- **STEERING COMMITTEE established 2013**
- **Landowners Development Committee (LDC) established 2013**
- **Landowner workshops help to relay arrangements and appoint a LOU Representative**
- **LOU Representative is attached with NTF for training and capacity building on management of PA**
- **Sovi Basin Management Plan widely consulted and currently reviewed by TLTB**
- **CI & NTF consolidate Work plans and management activities to be supported by the Trust Fund**

SBPA MANAGEMENT FRAMEWORK

- Management Plan

- 14 Policies

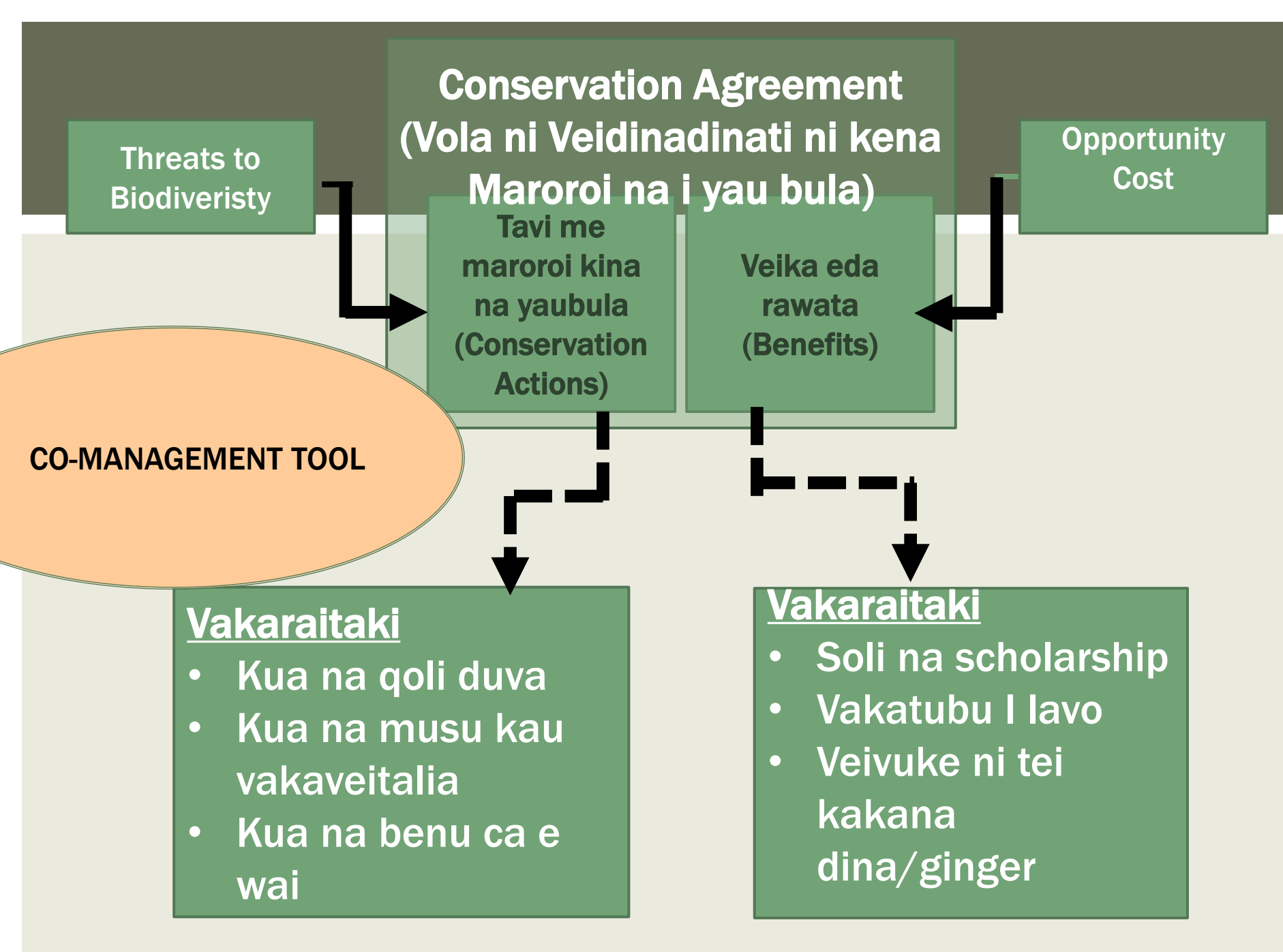
- Co-MANAGEMENT
 - CUSTOMARY RIGHTS
 - STRENGTHEN LEGAL FRAMEWORK FOR PA
 - ZONING
 - BOUNDARY MARKING
 - TRAINING
 - TOURISM
 - INVASIVE SPECIES
 - SPECIES THREATENED WITH EXTINCTION
 - MONITORING AND INFORMATION MANAGEMENT
 - ENVIRONMENTAL IMPACT ASSESSMENT
 - INFRASTRUCTURE DEVELOPMENT
 - MINING AND QUARRING
 - RESEARCH

- GEFPAS funded graphic design of the MP

CO-MANAGEMENT FRAMEWORK

■ Communication and Information Exchange

- Adopt, honour and support traditional leadership
- SBPA Landowner Committee
 - Communicate among landowners
 - Communicate with SBPA Steering Committee
 - Communicate with other stakeholders e.g. TLTB
 - Promotion of landowner interest
 - Reaching of agreements on roles, responsibilities and procedures



Conservation Agreement (Vola ni Veidinadini ni kena Maroroi na i yau bula)

Threats to
Biodiveristy

Opportunity
Cost

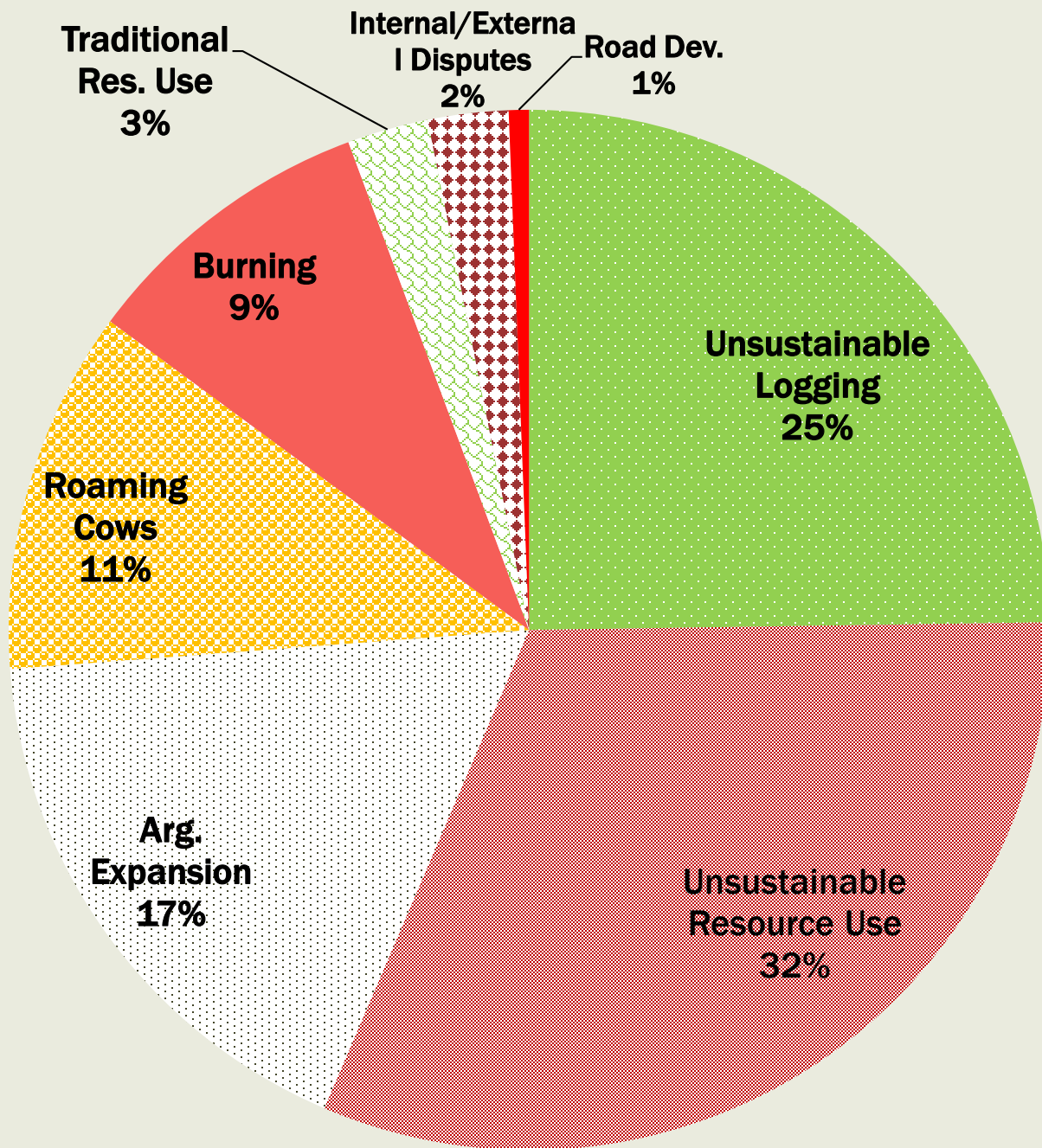
Tavi me
maroroi kina
na yaubula
(Conservation
Actions)

Veika eda
rawata
(Benefits)

CO-MANAGEMENT TOOL

- Vakaraitaki
- Kua na qoli duva
 - Kua na musu kau vakaveitalia
 - Kua na benu ca e wai

- Vakaraitaki
- Soli na scholarship
 - Vakatubu I lavo
 - Veivuke ni tei kakana dina/ginger



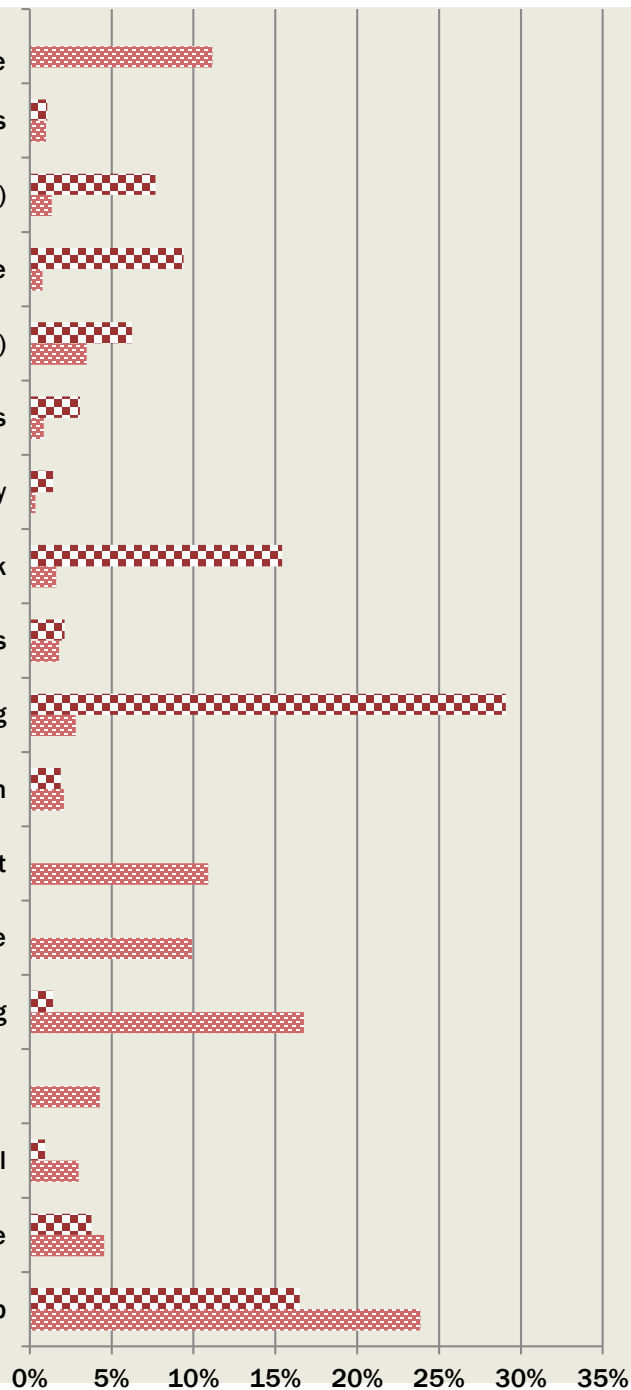
MAJOR THREATS TO THE ENVIRONMENT

RESULT OF SOCIOECONOMIC SURVEY 2013

Communities:
Nukusere,
Delailasakau,
Nasevou,
Nadakuni
Naivucini

-Govt assistance, FEA assistance,
Transportation Purposes, School Infrastructure

Footpaths
Church (chairs & tiles)
Social welfare
Toilet (Flush)
New Business
Unity
Water Tank
Flood Gates
Housing
Relocation
Agriculture Input
Health Assistance
Skills Training
Village Carrier (transport)
Community Hall
Road Infrastructure
Scholarship



Household
Community

POTENTIAL OPPORTUNITY COST

RESULT OF SOCIOECONOMIC SURVEY 2013

Communities:
Nukusere,
Delailasakau,
Nasevou,
Nadakuni
Naivucini

COMMUNITY CONSERVATION AGREEMENT IN SBPA

■ PARTNERS IN AGREEMENT

- NTF (Grantor)
- SBPA Village Community (Grantee)
- SBPA Landowner Committee (Witness)
- Provincial Office (Witness/Arbitrator)
- Conservation International (Advisor)

Threats to Biodiveristy

Conservation Agreement (Veidinadinati)

Opportunity Cost

Tavi me maroroi kina na yaubula
(Conservation Actions)

Veika eda rawata
(Benefits)

Vakaraitaki

- Kua na qoli duva
- Kua na musu kau vakaveitalia
- Kua na benu ca e wai

Vakaraitaki

- Soli na scholarship
- Vakatubu I lavo
- Veivuke ni tei kakana dina/ginger

CONTENT OF CCA

- Background – AI KAU
- Stakeholders – VEIWEKANI E VAUCI ENA VEIDINADINATI
- Objectives – NAKINAKI RARABA
- Sanctions – VEIVAKADONUI
- Coordination of Activities – TUVATUVA NI VEIKA E QARAVI
- Duration of Agreement – BALAVU NI VEIDINADINATI
- Arbitration – VEIVAKASALATAKI & VEIVAKAMEAUTAKI

TOURISM

- **Tourism Master Plan for SBPA**
- **(Vili Koyamaibole – Consultant)**
 - **Assessment of the site – feasibility study**
 - Value Chain
 - Market Access
 - Governance Structure (Community)
 - Co-Management Framework

MONITORING, EVALUATION & INFORMATION

- Biodiversity Survey (USP & Partners)
- REASSESSMENT OF PERMANENT MONITORING PLOTS
 - 10 YRS
 - USP/IAS, & PARTNERS
 - INDICATORS FOR BIODIVERISTY
 - REVIEW INDICATORS
 - ASSESS IMPACTS OF CHANGE OVER TIME



Economies of scale



legitimacy

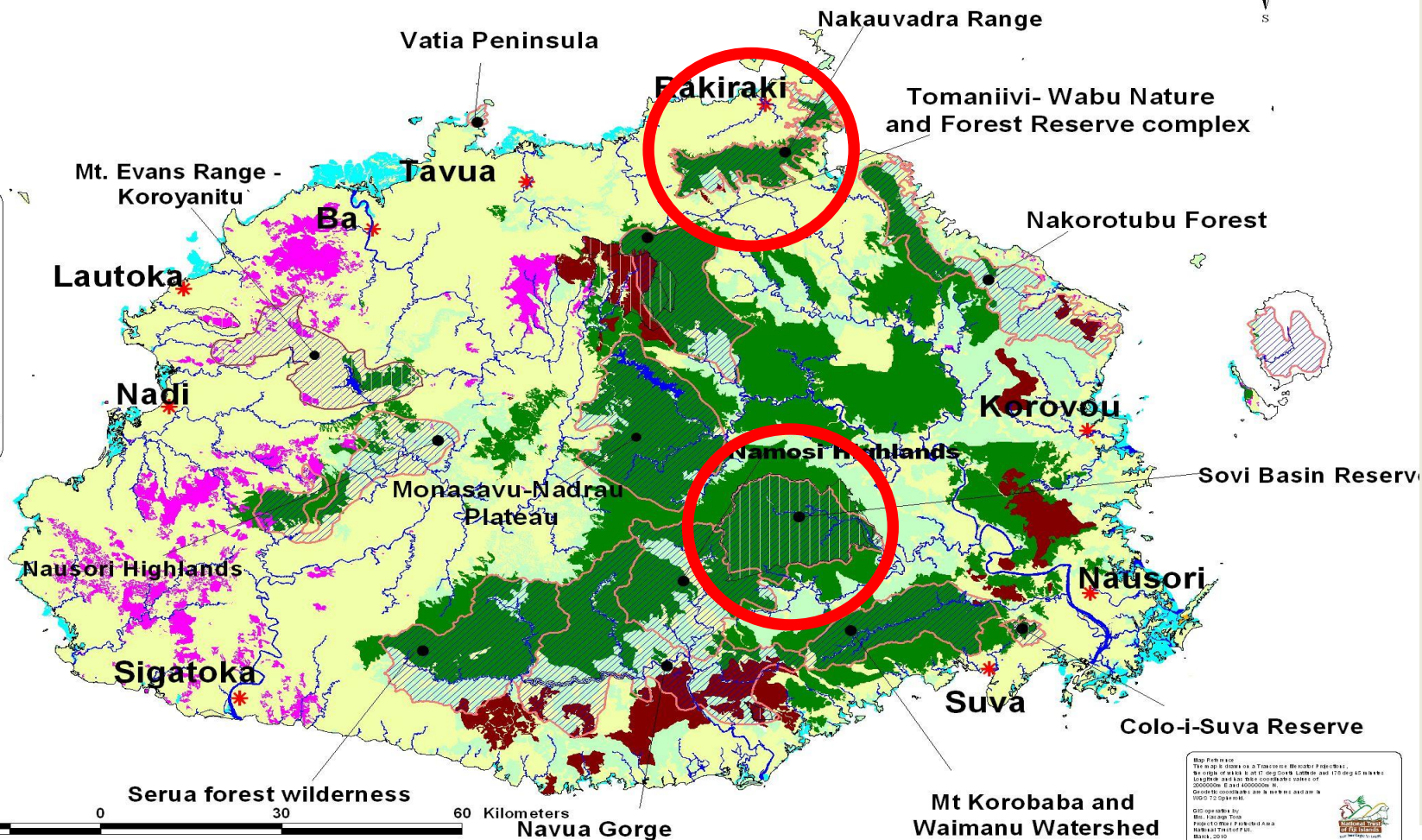


**Community
resilience**

**LESSONS
LEARNT
FROM
SOVI
BASIN**

CONNECTING THE DOTS.....

KBA AND PA MAPS WITH FOREST COVER



CONSERVATION CORRIDOR

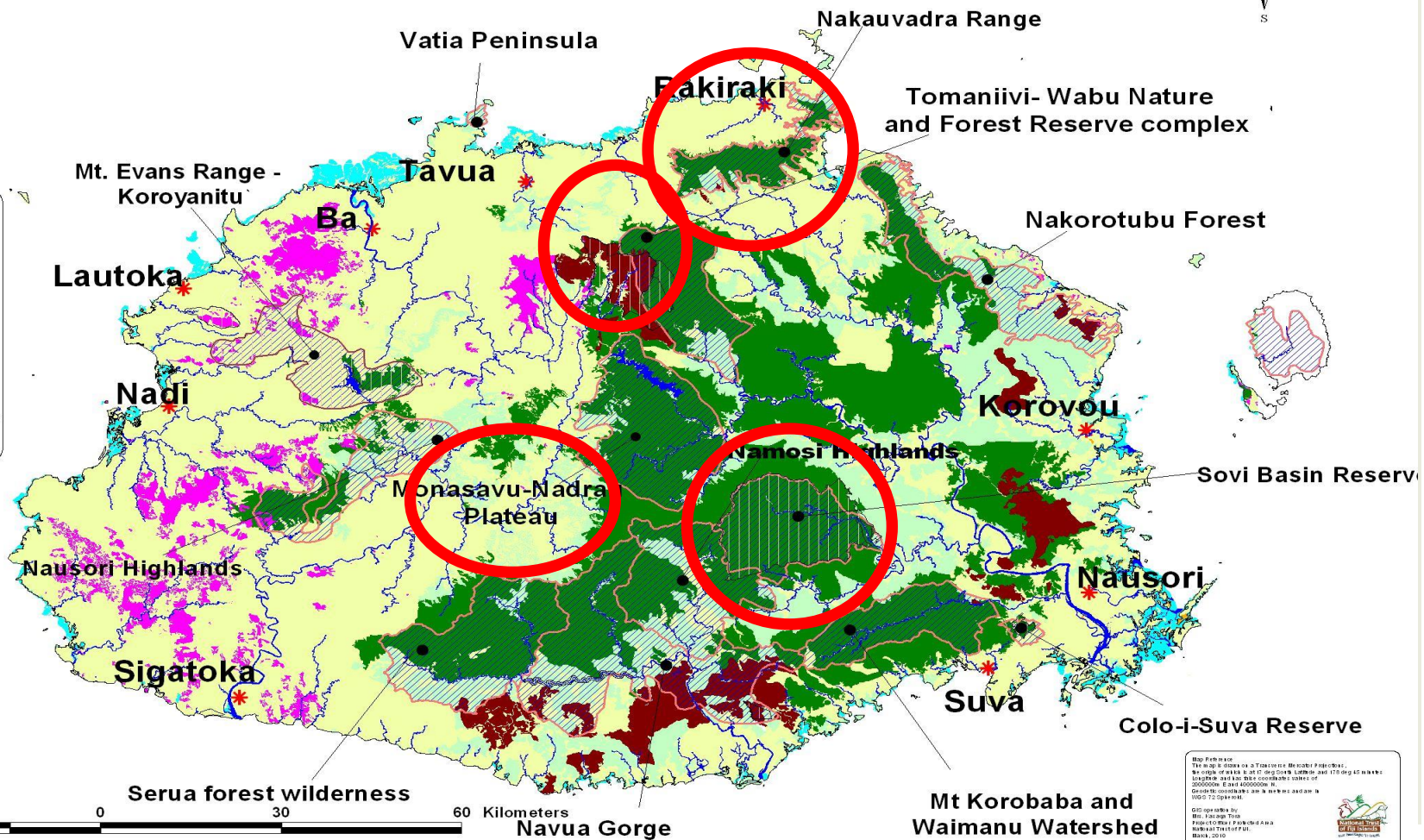
KBA AND PA MAPS WITH FOREST COVER



LEGEND

Forest Cover

- Closed Forest
- Coconut
- Hardwood Plantations
- Mangroves
- Non Forest
- Open Forest
- Pine Plantations
- Water Body
- Protected Areas
- Key Biodiversity Areas
- * Towns



Map Producer
 The map is drawn as a Topographic Map with a projection of UTM (Universal Transverse Mercator) and has a scale of 1:50,000. The map is drawn at a scale of 1:50,000. The map is drawn at a scale of 1:50,000. The map is drawn at a scale of 1:50,000.

Map Data
 The map is drawn as a Topographic Map with a projection of UTM (Universal Transverse Mercator) and has a scale of 1:50,000. The map is drawn at a scale of 1:50,000. The map is drawn at a scale of 1:50,000. The map is drawn at a scale of 1:50,000.

Map Date
 The map is drawn as a Topographic Map with a projection of UTM (Universal Transverse Mercator) and has a scale of 1:50,000. The map is drawn at a scale of 1:50,000. The map is drawn at a scale of 1:50,000. The map is drawn at a scale of 1:50,000.

Map Author
 The map is drawn as a Topographic Map with a projection of UTM (Universal Transverse Mercator) and has a scale of 1:50,000. The map is drawn at a scale of 1:50,000. The map is drawn at a scale of 1:50,000. The map is drawn at a scale of 1:50,000.