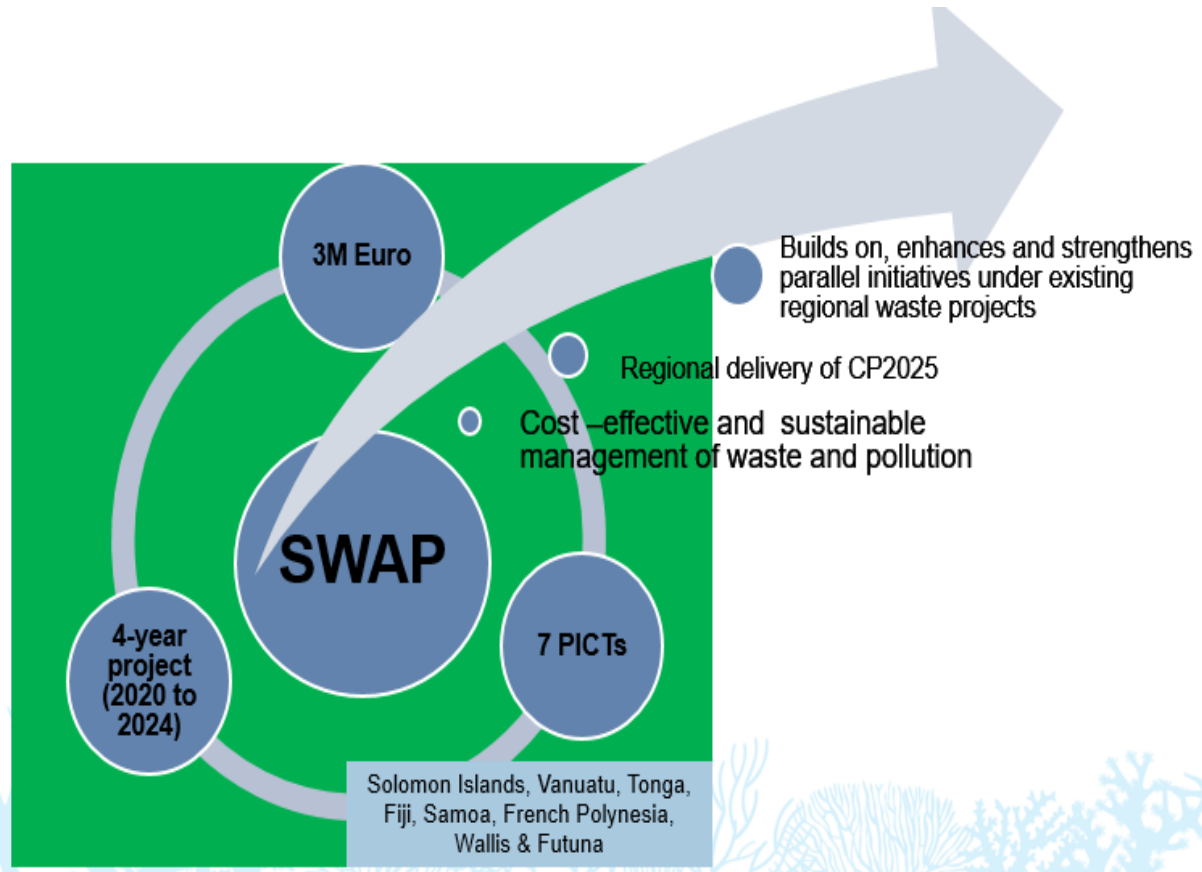
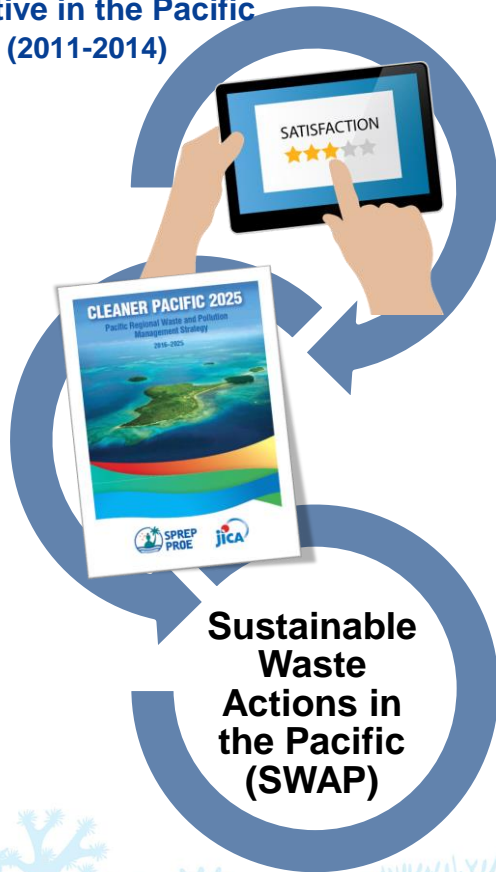


**Solid Waste Management
Initiative in the Pacific
(2011-2014)**



Project Components

Training



Pilot
Projects



Community
of Practice



SWAP

Thematic Areas

Sustainable
Financing

Used Oil
Management

SWAP

Disaster
Waste

Marine
Debris

Pilot Projects

Submission of
concept note

Evaluation by
SPREP and
TWG

Alignment with
other regional
projects

Approval by
Steering
Committee

**Sustainable
Financing**

Support to CDL

Used Oil

Institutional
mechanisms
Storage facilities and
collection systems
Treatment and
recycling plants
Disposal of used oil

**Marine
Debris**

Coastal clean-ups
Data collection

**Disaster
Waste**

Scoping study for a
potential disposal site
to be climate proofed
Rehabilitation of
disposal facility

Identified activities

Community of Practice

What is a Community of Practice?



- Platform for sharing project outcomes including progress, challenges and lessons learned
- Information dissemination is the key outcome
- Workshops and meetings with the involvement of the TWGs