

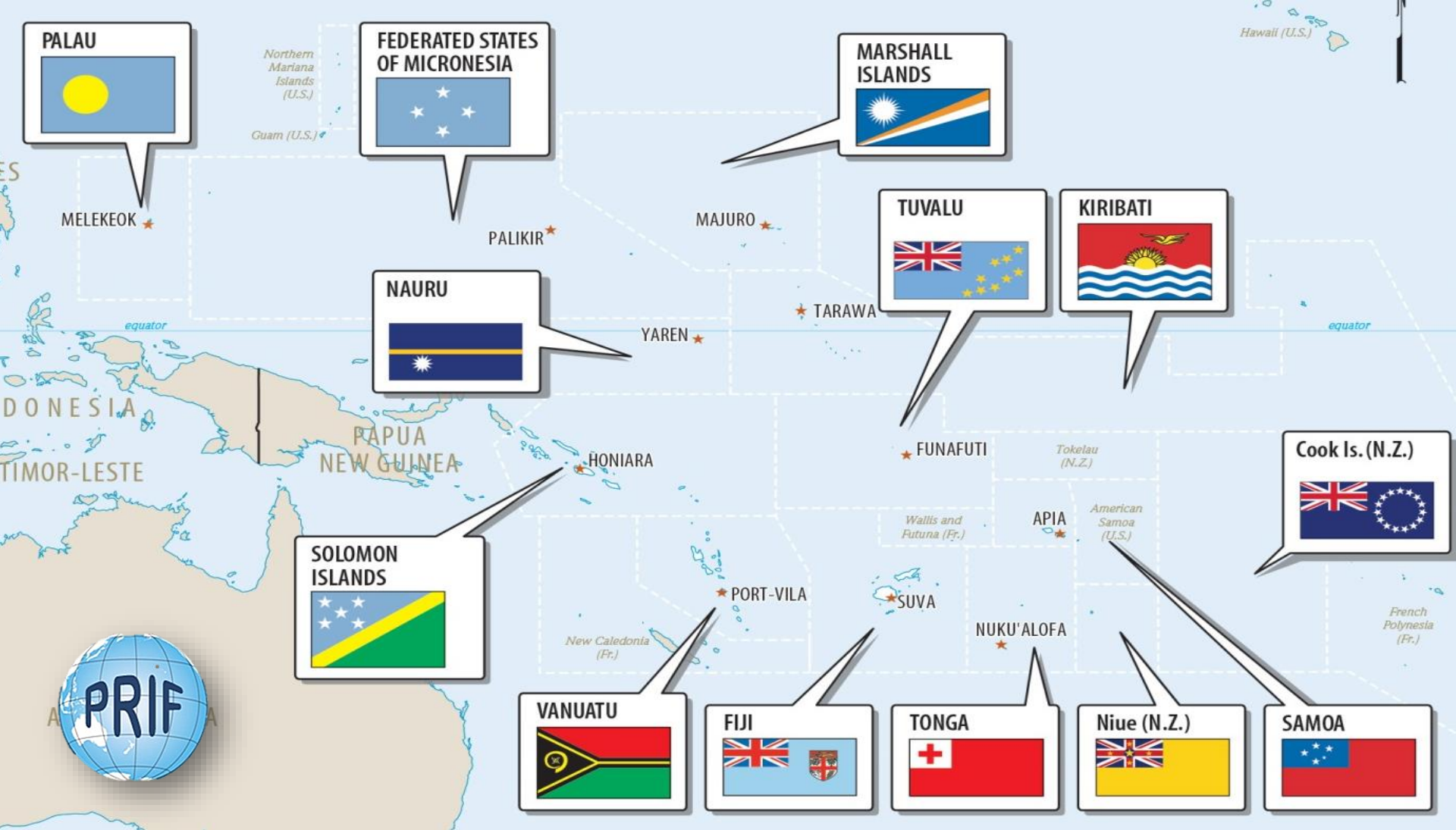


Pacific Region Infrastructure Facility



PRIF is a multi-development partner coordination, research and technical facility which supports infrastructure development in the Pacific







Pacific Region Infrastructure Facility

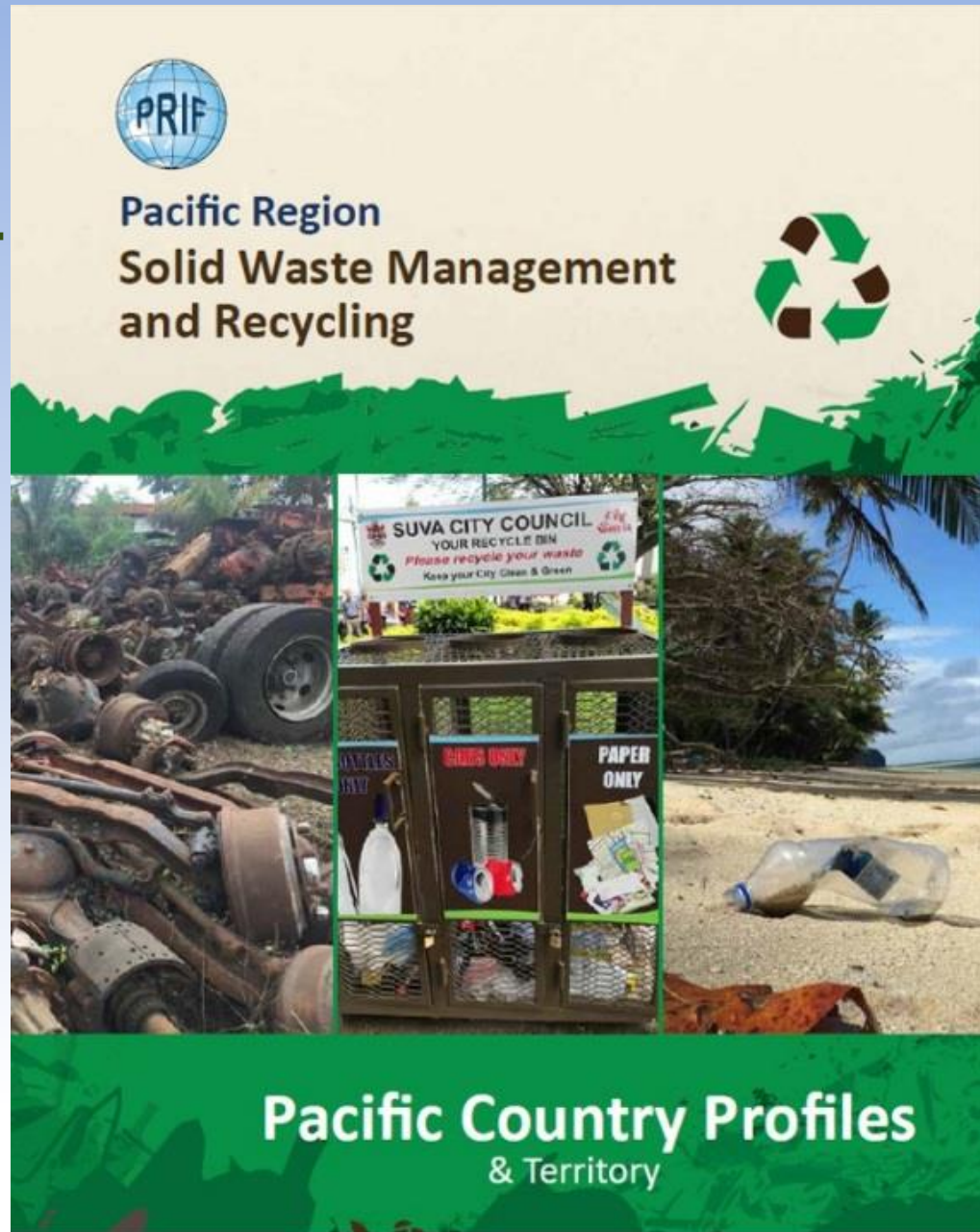
Regional Review of Solid Waste Management



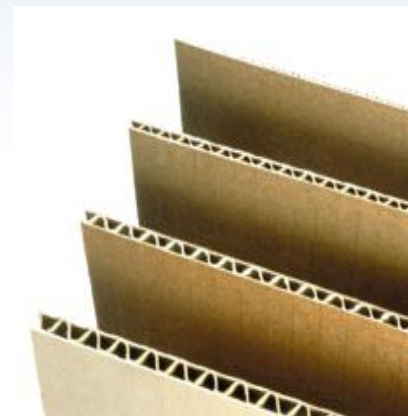
Research phase..

PRIF study 2017/2018

to identify and quantify the opportunity to improve the resource recovery of 15 recyclable commodities present in the solid waste stream in 15 Pacific island countries and territories.



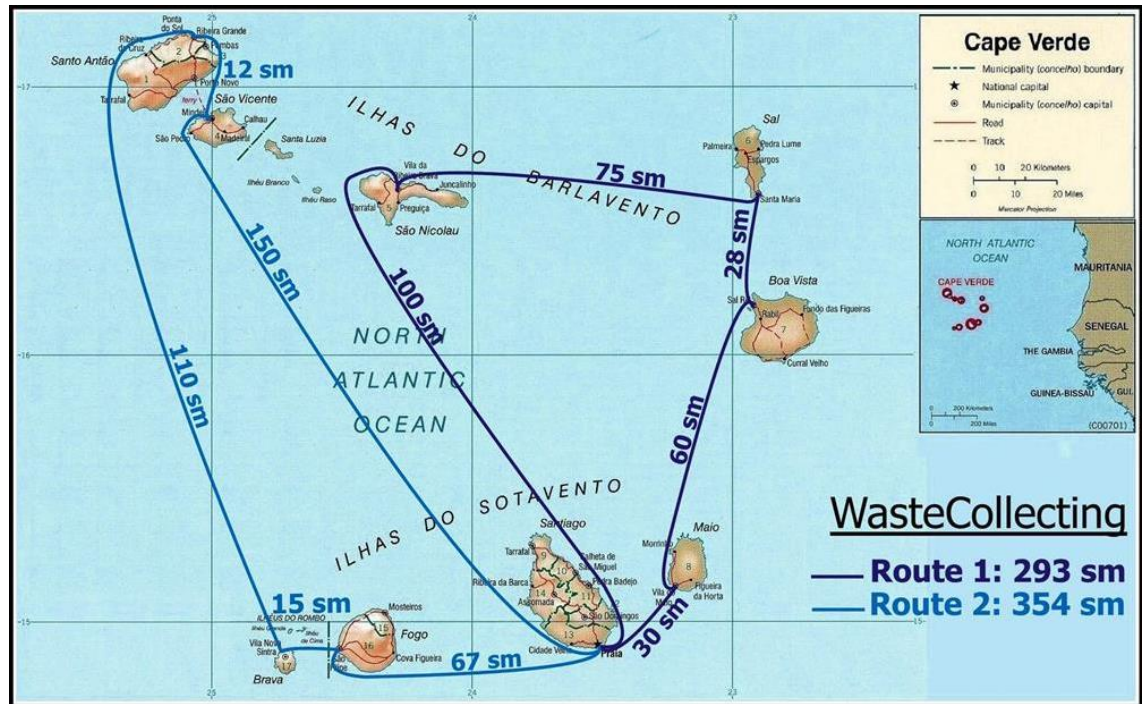
Material scope



..an integrated regional Network ?

Commercial shipping options = \$

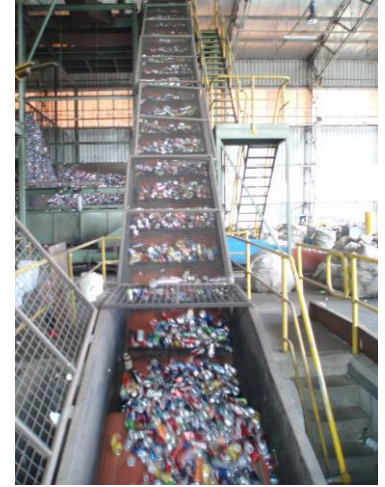
Swire / CNCo offer - Free shipping from certain ports for certain commodities.



WHY IS A SHIP THE SOLUTION ?



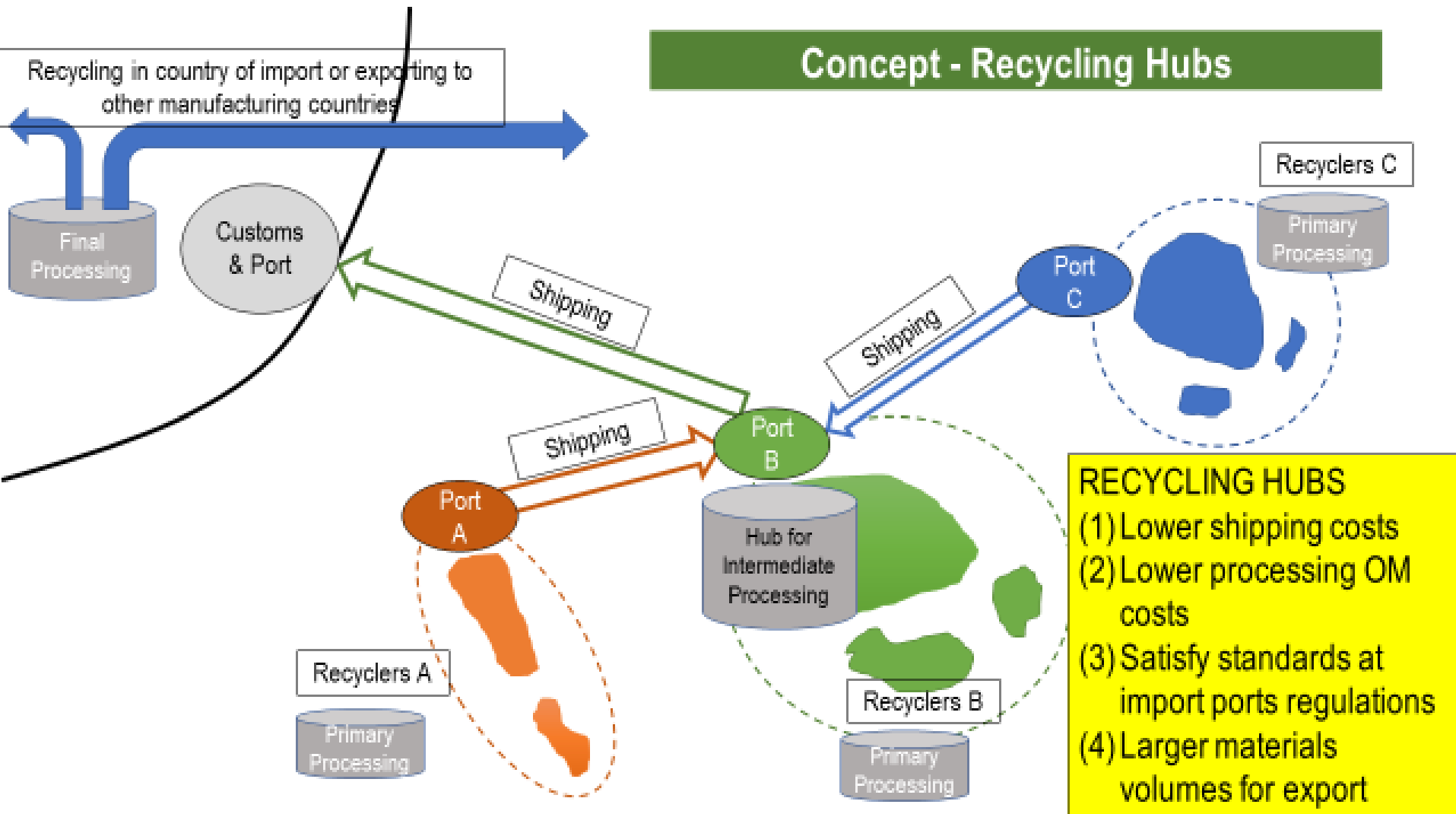
What are the infrastructure requirements?



..and to export ? from where? to where ?



What would a Pacific Regional Network scheme look like ?



Waste Audits



- **Develop data collection methodology**
- **Verify the research phase**
- **Reduce error**
- **Collect data for the scoping study**

Waste Audit Methodology



- Will be available soon in PRIF website (www.theprif.org)



Scoping: Pacific Regional Network



Objective

Establish a multi-country feeder network for recyclables and a regional processing / recycling / trans-shipment hub facility.

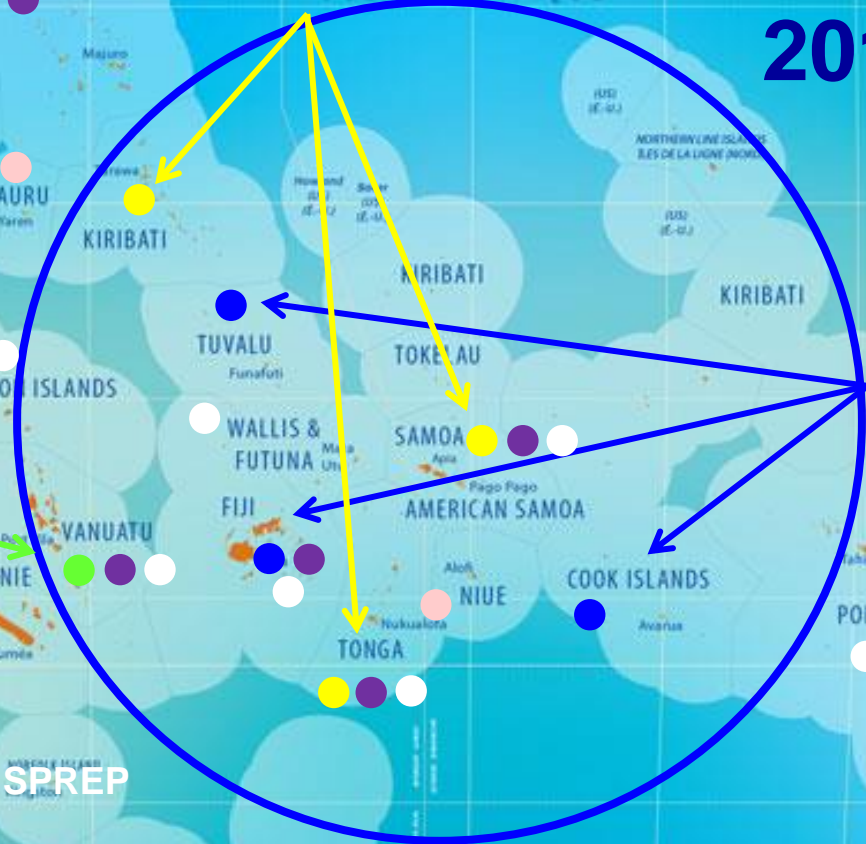
Next step

Scoping study to establish a 'pilot' recycling network in one region to prove viability and sustainability. Determine feasibility of a regional processing, trans-shipment and recycling hub, suitable urban centre facilities, and scaled out island storage facilities in each of the Pacific island countries associated with the network.

Proposal based on detailed assessment of port facilities, capacity, shipping networks and other economic aspects. The regional hub facility would receive shipments of a selected range of recyclable waste materials from a network of source countries in the region.

The hub would be designed as a circular economy enterprise - to supply current / future remanufacturing enterprises, and to aggregate and add value to shipments of recyclables to other destinations.

Pacific Waste Audits 2018-2020



- AFD project in development with SPREP
- JPRISM II program
- Commonwealth Clean Oceans Alliance
- EU / SPREP / PacWastePlus

in close cooperation with:



SPREP
Secretariat of the Pacific Regional
Environment Programme

