

# INVERTEBRATES



## COASTAL RESOURCE MANAGEMENT



# SEACUCUMBERS

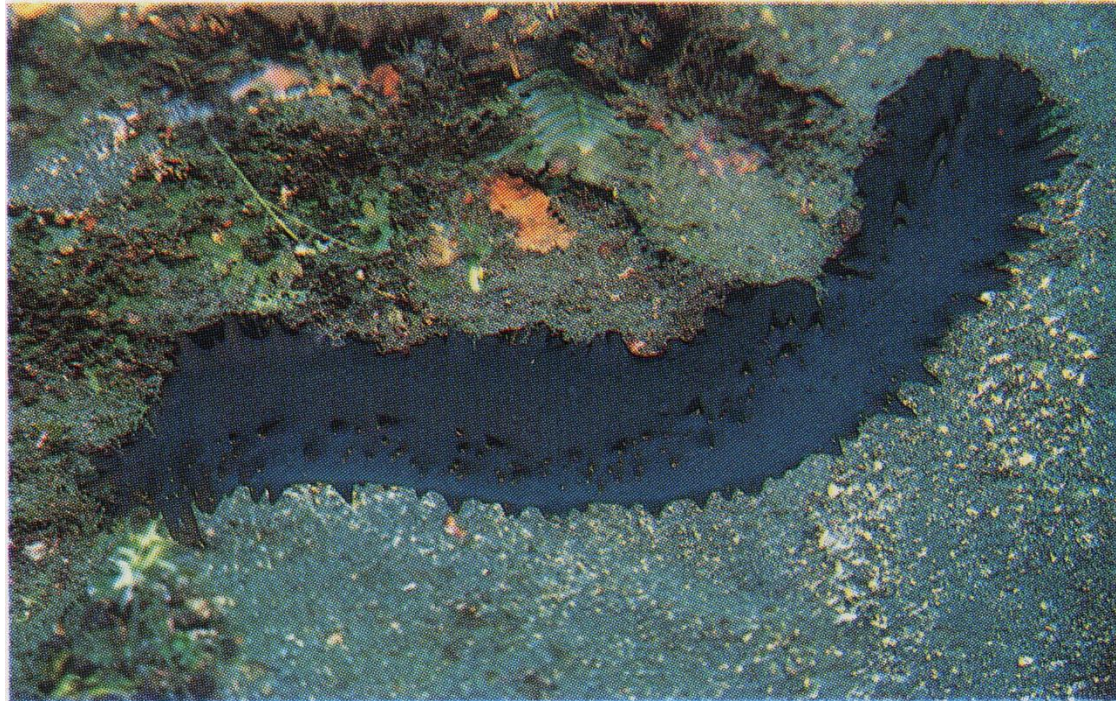
*Actinopyga mauritiana*  
(Holothuridae)



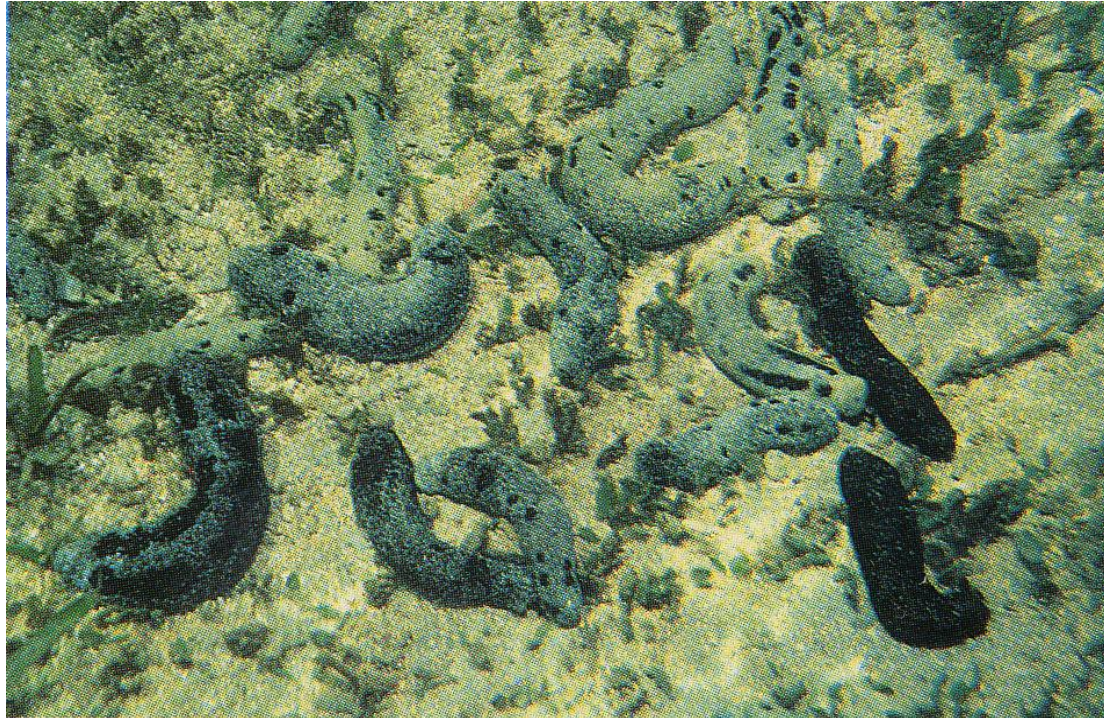
*Actinopyga miliaris*  
(Holothuridae)



*Stichopus chloronotus*  
(Stichopodidae)



*Holothuria atra*  
(Holothuridae)



*Holothuria edulis*  
(Holothuridae)

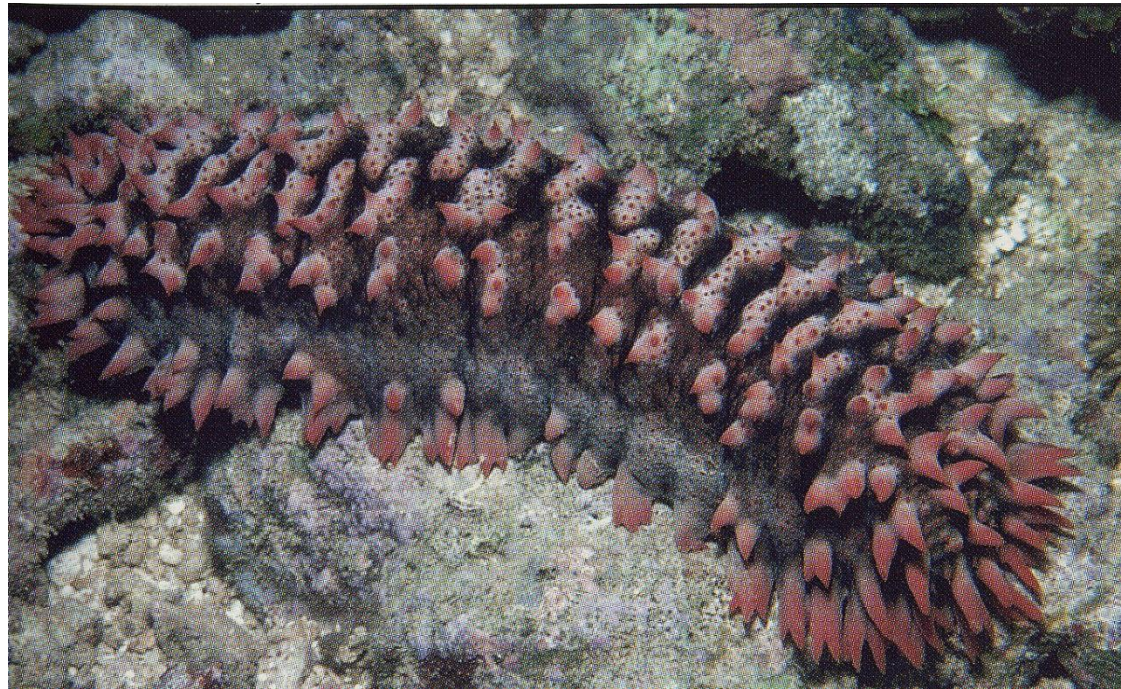


*Bohadschia argus*  
(Holothuridae)





*Thelenota ananas*  
(Stichopohodidea)



*Bohadschia* sp.  
(Holothuridae)



*Euapta godeffroyi*  
(Synaptidae)



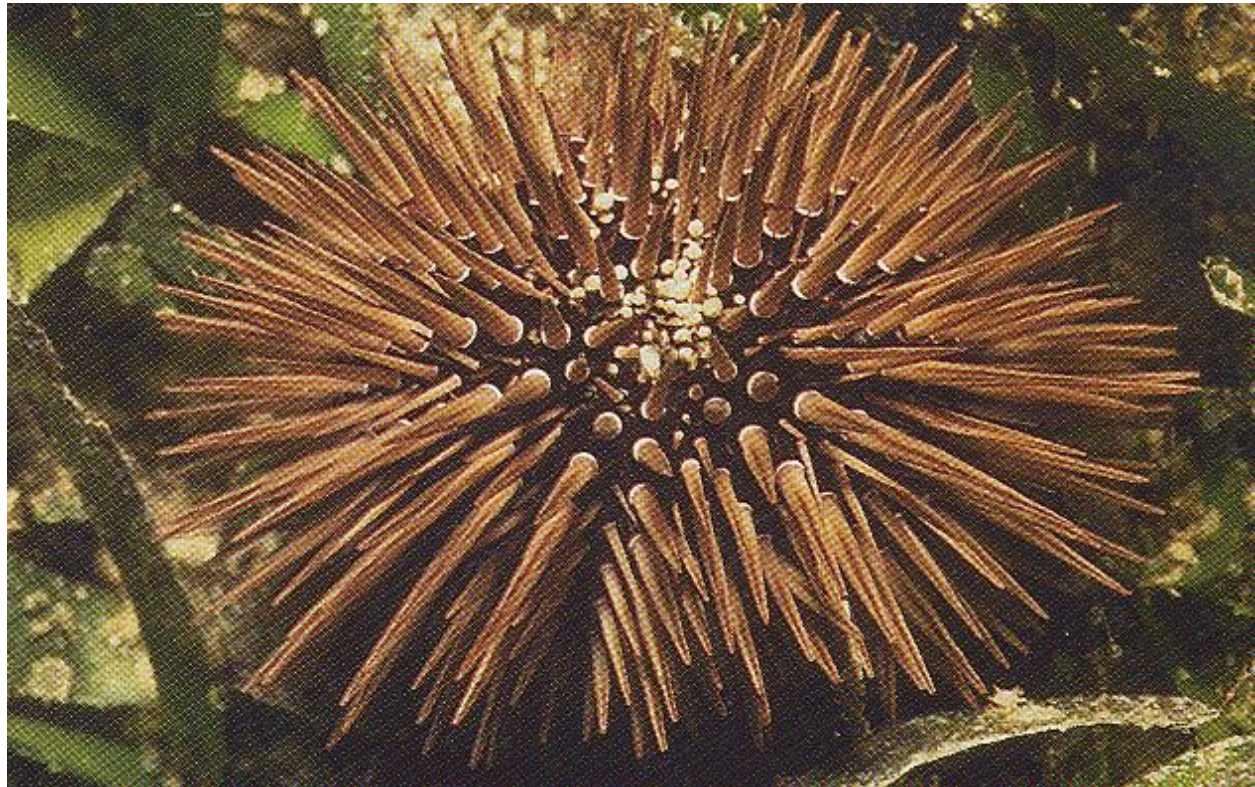


# SEAURCHINS

*Echinostrephus aciculatus*  
(Echinometridae)



*Echinometra mathaei*  
(Echinometridae)



*Echinothrix calamaris*  
(Diadematidae)



*Diadema spp.*  
(Diademataceae)





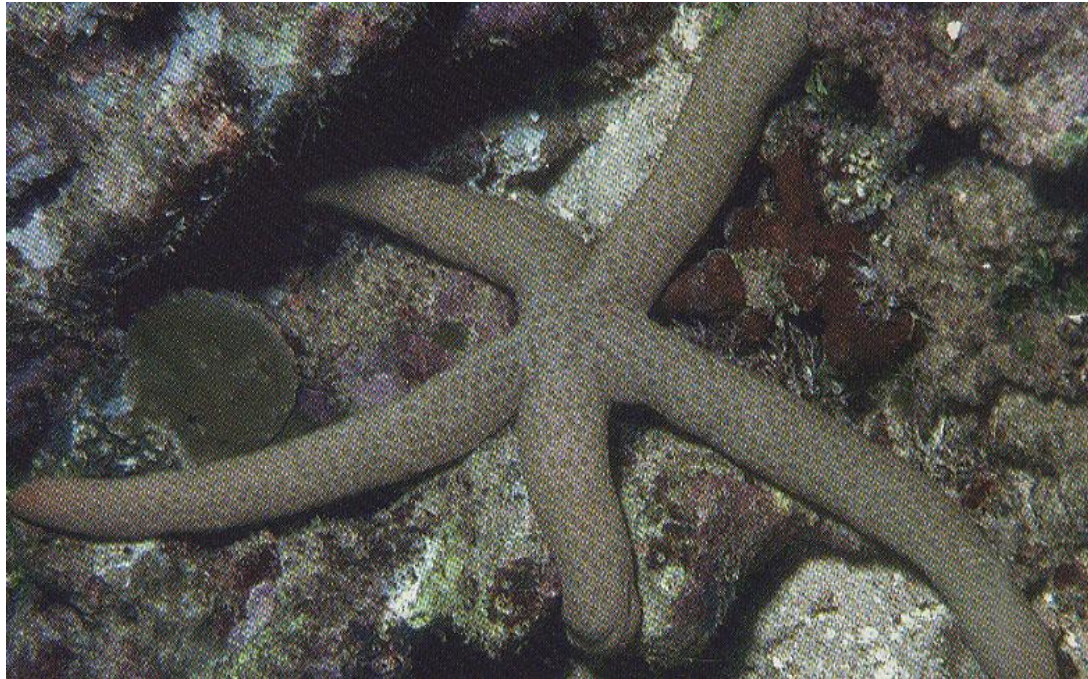


# SEASTARS

*Linkia laevigata*  
(Ophidiasteridae)



*Linckia guildingi*  
(Ophidiasteridae)



*Acanthaster planci*  
(Acanthasteridae)



*Culcita novaguinea*  
(Oreasteridae)



*Crinoids sp.*  
(Mariametridae)





# CLAMS & TROCHUS

*Trochus niloticus*  
(Trochidae)

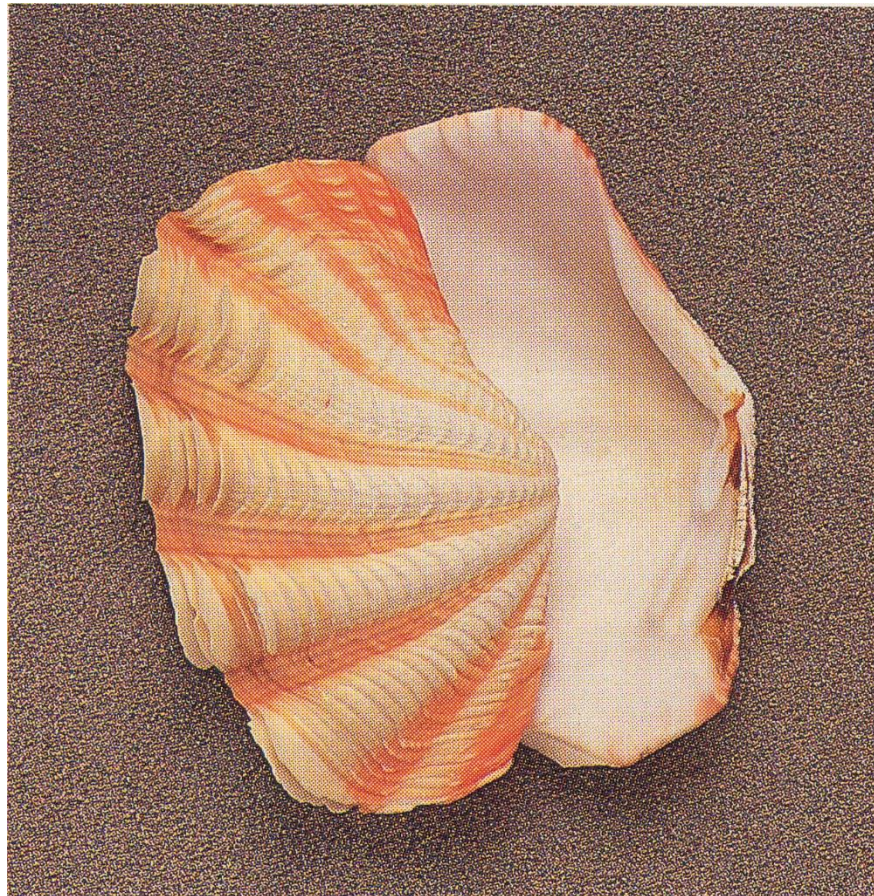




*Turbo spp.*  
(Trochidae)



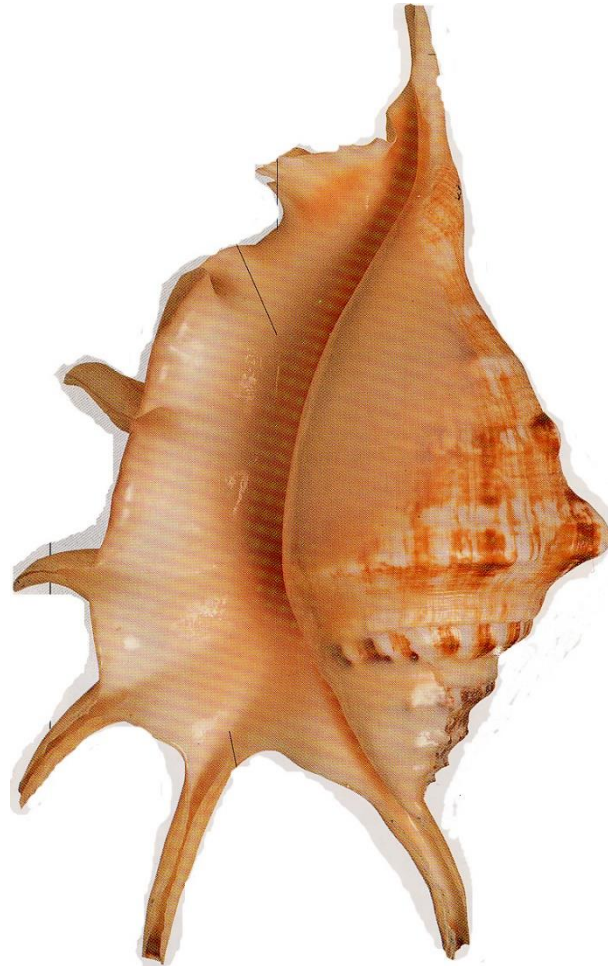
*Tridacna crocea*  
(Tridacnidae)



*Tridacna sp.*  
(Tridacnidae)



*Lambis lambis*  
(Strombidae)



*Octopus cyanea*  
(Octopodidae)



*Panilurus pencillatus*  
(Palinuridae)

