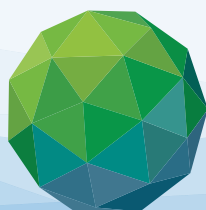


RMI Green Climate Fund Handbook:

# Melele Ko Kin Green Fund



GREEN  
CLIMATE  
FUND



**SPREP**  
Secretariat of the Pacific Regional  
Environment Programme

The background features a stylized sun with a circular center and radiating rays on the left side, and stylized waves on the right side. The sun is rendered in shades of orange and yellow, while the waves are in shades of blue and green. The overall style is graphic and illustrative.

## SPREP Library Cataloguing-in-Publication Data

RMI green climate fund handbook: Melele ko kin green fund. Apia, Samoa : SPREP, 2021.

17 p. 29 cm.

ISBN: 978-982-04-0963-7 (print)  
978-982-04-0964-4 (ecopy)

1. Green climate fund – Handbooks, manuals, (etc...) – Republic of the Marshall Islands. 2. Climatic changes – Environmental aspects – Republic of the Marshall Islands.  
. I. Pacific Regional Environment Programme (SPREP). II. Title.

551.65968 3

Cover photo: Jake Marote

Publication design: Carlo Iacovino



RMI Green Climate Fund Handbook:

# **Melele Ko Kin Green Fund**

# Kobban Bok In

1. <b>Melele Ko Kin Green Climate Fund (GCF) Eo</b>	<b>6</b>
2. Kadkadin Aolepān Peba In	6
3. Wāween ko Ņan Bōk Jāān-In-Jipañ im Jeraamman ko jet jān GCF	6
4. <b>Ro Rej Lolorjake Jerbal Kein an GCF</b>	<b>7</b>
5. National Designated Authority (ak NDA) Eo	7
6. <i>Tile Til Eo</i> Committee (TTEC) Eo	7
7. Project Review Committee Eo	7
8. Wāwein ejaak GCF proposal	8
9. <b>Buñtōn Ko Ņan Ejaake Būrojāāk Ko</b>	<b>9</b>
10. Kadkadin Mweñan In	9
11. Wāwein ejaak Būrojāāk im Būrokraam ko	9
12. <b>Būrojāāk Cycle ko an RMI GCF</b>	<b>12</b>
13. Buñtōn Eo Kein Kajuon - Ejaake Project Idea Eo	12
14. Buñtōn Eo Kein Karuo - Ejaak Concept Note Eo	12
15. Buñtōn Eo Kein Kajilu - Ejaak Funding Proposal Eo	12
16. Buñtōn Eo Kein Kaemān - Jemloḱ Eo Jān GCF Kijjien Funding Proposal Eo	12
17. Buñtōn Ko Ikijen RMI No Objection Letter	13
18. <b>Annex Juon: Peba (ak Template) Eo Kōjerbale Ņan Ejaak Project Idea Eo</b>	<b>15</b>
19. <b>Annex Ruo: Peba Eo Ej Kōllaajrake Wāwein Kanne Project Idea Template Eo</b>	<b>17</b>
20. <b>Annex Three: Kōmmelele In Naan Ko</b>	<b>19</b>

## Ta Ko Lōta Ko Rej Jutak Kaki:

<b>AE</b>	Accredited Entity
<b>CCD</b>	Climate Change Directorate
<b>DAE</b>	Direct Access Entity
<b>GCF</b>	Green Climate Fund
<b>GoRMI</b>	Government of the Republic of the Marshall Islands
<b>IAE</b>	International Access Entity
<b>NAP</b>	National Adaptation Plan
<b>NDC</b>	Nationally Determined Contribution
<b>NSP</b>	National Strategic Plan
<b>NDA</b>	National Designated Authority
<b>NoL</b>	No-objection Letter
<b>PRC</b>	Project Review Committee
<b>PPF</b>	Project Preparation Facility
<b>RMI</b>	Republic of the Marshall Islands
<b>SDG</b>	Sustainable Development Goal
<b>TTEC</b>	Tile Til Eo Committee

# 1. Melele Ko Kijjien Green Climate Fund (GCF) Eo

## a. Kadkadin Aolepān Peba In

Green Climate Fund (ak GCF) eo eaar ejaak ilo 2010 eo im ej kiiō juon iaan doulul ko rej make wōt em lap ilo la! in. Jibadbad im kōttōpar eo e!ap eo an ej ñan jipañ ña mejlan climate change (ak oktak in mejatoto). Jāān in jipañ ko jān GCF eo remaroñ jermal ñan jipañ RMI kōmman wōnmaan!ok ko im redik aer kattoonone mejatoto eo kab rekije ñan ña mejlan jorrāān ko im rej jarjar tok jān oktak in mejatoto. Wāween an GCF maroñ tōpar jibadbad im kōttōpar in ej ilo an letok jipañ ko ñan ña mejlan būrojāāk kab būrokraam ko renaaj kōmman oktak im kōkōmanman!ok kakien im kōttōpar ko an aelōñ kein ikijjien oktak in mejatoto ilo aelōñ kein.

Bok In Kōmmelele in (ak Handbook in) kijjien GCF kar maroñ kōpooje ñan kōmālij im kapidodoik melele ko ñan ro tōllōkier bwe ren melele kōn men ko me juon-im-juon (ak juon la!) ej aikuj kōmmani im katōpraki bwe en maroñ bōk leen jipañ kein ñan kattōri būrojāāk ko kijjien oktak in mejatoto.

## b. Wāween ko Ñan Bōk Jāān-In-Jipañ im Jeraamman ko jet jān GCF

RMI emaroñ ebbōk jāān in jipañ ko jān GCF, im ro tōllōkier jān RMI remaroñ kōjerali jāān kein ñan lolorjaki būrojāāk im būrokraam ko iumwin juon Accredited Entity (AE)<sup>1</sup> ak juon entity eo emōj an GCF kōweppāne bwe en maroñ kōmakūtkūti jāān ak jermal ko an GCF:

- AE kein remaroñ jermal āinwōt “Direct Access Entity” (DAE), ak doulul ko emōj an GCF kōweppāne im rej pād wōt ilo wōden bwil kein ad (regional entity) im bar ro jet ilo la! jiddik kein ad make (national entity) im emōj kōweppāne, āinwōt Secretariat of the Pacific Regional Environment Programme (SPREP) im kab Micronesia Conservation Trust (MCT). Bwe RMI en maroñ kajju bōk jāān in jipañ ko, ej aikuj ejaake juon AE im loori buñtōn ko emōj karōki kijjien ebbōk accreditation āinwōt an GCF eo kōtmāne. Rainin, ejañin wōr juon an RMI AE.
- RMI emaroñ bar ebbōk jāān in jipañ ko jān GCF ilo an jermal ippān doulul ko jet emōj kili ilo pe!aakin la! in (ak “International Access Entity” (IAE) ko). Jet iaan IAE kein rej āinwōt agency ko an United Nations, World Bank eo, im Asian Development Bank eo.

## Kōttōpar Ko Raorōk An GCF

- Jibadbad im kōttōpar eo bwe en jimettan-jimettan (50:50) wāwein an ajeej jāān in jipañ ko naaj kōjerali ñan ña mejlan aolep ma!okūtkūt ko im jermal ko kijjien mitigation im kab adaptation.
- Bwe jāān in jipañ ko ren jab wōtlōk la! in im dik!ok jān 50% ñe renaaj etal ñan la! ko rejedmatmat ñan jorrāān ko jarjar tok jān ukuktak in mejatoto, ekoba Small Islands Developing State (SIDS) ko.
- Kōpellōk ia! in jipañ kijjien jet joñak ko ak buñtōn ko rekkar tata ñan kōmakūtkūti jāān ko ekoba grant ko kab concessional loan ko me renaaj jermal ñan būrojāāk ko ekkar ñan karōk ko aer.
- Elōñ wāween ko GCF ej kōpellōki kijjien kappok jāān in jipañ, āinwōt: (i) ilo iumwin būrokraam eo an country readiness support eo; (ii) ilo ia! in maanjāppopo im kōpooji būrojāāk ko; (iii) ilo ia! in kapidodoik !ok kab kōkōmanman !ok kilen kappok jāān in jipañ; im kab (iv) būrojāāk ko kab būrokraam ko rej itok iumwin private sector eo kijjien mitigation im adaptation.

<sup>1</sup> The GCF accreditation process is outlined here: <https://www.greenclimate.fund/gcf101/getting-accredited/accreditation-process>

## 2. Ro Rej LolorjakeJermal Kein an GCF

### a. National Designated Authority (NDA) eo

Kien eo an Republic eo an Marshall Islands (GoRMI) eaar jitōñ wōpij eo im ña etan Climate Change Directorate bwe en tarrin National Designated Authority (NDA) eo an RMI ñan GCF. Elōñ eddo ko raorōk NDA eo ej loloorjaki, ko im rekitbuuj<sup>2</sup>:

- Eddo in kōnono ilo etan Kien eo GRMI ilo jabdewōt makūtkūt ko rejelōt GCF;
- Maroñ eo bwe en etali im lali aolep jemļok in jermal ko rejelōt concept note ko im funding proposal ko emōj liñōri im ekkatak kaki, ekoba je ļok juon lōta eo ej kallikkar ke ejjelok an kajjitōk ñae proposal ko;
- Maroñ eo ñan kōmmani kweilok ko im bareinwōt kōpeļaaiki kwelok ko ippān ro tōllōkier ilo jermal kein; im
- Eddo eo in leļok kapilōk ñan national institution ko rej kajjioñ bōk accreditation im kab elleļok nomination lōta ko āinwōt ke ejja mōttan wōt peba ko aikuji ilo GCF accreditation application eo

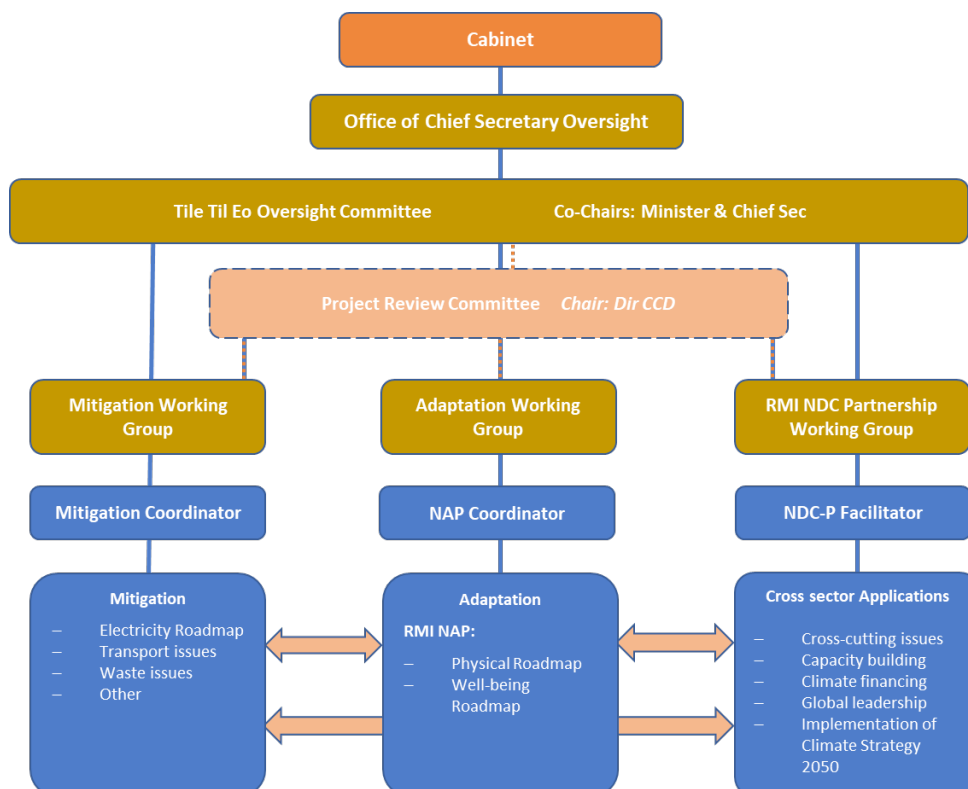
### b. Tile Til Eo Committee (TTEC) eo

TTEC eo kar ejaake ñan an loloorjaki im kōpeļaaiki aolep makūtkūt ko im jermal ko rejelōt ukuktak in mejatoto kab kakien ko ej tōllōki. Ej an TTEC eo eddo in kōweppāni, lali im jeban aolep jemļok ko ñan kōmmani makūtkūt ko iumwin GCF. Āinwōt kōmlōte, TTEC eo, ilo an jermal ippān ro tōllōkier ilo wōpij eo an Chief Secretary eo, naaj aikuji mālim eo an Cabinet kijjen jabdewōt proposal ko ñan GCF.

### c. Project Review Committee (PRC) eo

PRC eo kar ejaak ñan an jipañ NDA eo kōmakūtkūti jermal ko an GCF, āinwōt etali im liñōri jabdewōt project idea ko rej ettōrwōt iumwin jibadbad im kōttōpar ko kōmlōt iumwin GCF, ekoba concept note ko im kab funding proposal ko im ej bareinwōt an eddo in liñōri application ko an national entity ko me rej lōmñak in bōk accreditation. Ro uwaan PRC eo rej NDA eo, Minister eo an Finance ekoba ra ko jet an kien eo ioļap, kien ko an kajjojo aelōñ ko ekoba doulul ko tōllōkier. Karōkan wōpij ko tōllōkier kijjen aolepān jermal kein rej waļok ilo pija ñe ilo Figure 1.

**Figure 1: Karōk in doulul ko tōllōkier im rej uwaan wōt Tile Til Eo Committee (TTEC) eo ekoba Project Review Committee (PRC) eo**



<sup>2</sup> Green Climate Fund, 2015, "Engaging with the Green Climate Fund", Elements 01.

## Wāwein ejaak GCF proposal

- **Proposal eo ej rie kōttōpar ko an Kien.** Aolep būrojāāk im jerbal ko an GCF rej aikuj in ļoori kōttōpar ko an Kien ikijjen climate, ekoba NAP eo, NDC eo, RMI GCF Country Programme eo, im kab priority ko kōmlōti ilo NSP eo. Buñtōn ko ñan ejaake juon proposal, im kab ñan liñōre, ekkatak kake im kōweppāne juon proposal rej waļok ilo Bok In Kōmmeļeļe (Handbook) in rej ñan lukkuun lale bwe proposal eo en ļoori men ko kōmlōti me rōlukkuun in aorōk ilo GCF.
- **Juon iaan impact area ko rualitōk ilo GCF.** Ewor rualitōk impact area ko rejelōt mitigation im adaptation. Emenin aorōk bwe būrojāāk ko iuṃwin GCF ren ļoor juon iaan area kein rualitōk.
- **Aorok in jerbal nae ukuktak in mejatoto.** Eaorōk bwe aolep GCF būrojāāk ko ren jet ko im renaaj ṅa mejļan elōñ iaan jorrāān ko jarjar tok jān ukuktak in mejatoto - āinwōt “low carbon shipping” (ak tiṃa ko me rej jab kōjerbal kaan) ak “building coastal resilience” (āinwōt wāween ko ñan kōjparoke parijet ko). Emenin aorōk bwe jorrāān ak apañ eo jarjar tok jān ukuktak in mejatoto eo en men eo eļap kōnono kake jān tōre eṅ enaaj ijjiṅo (ļok ñan tōre eṅ enaaj bōk jikin) būrojāāk eo.
- **Būrojāāk eo ej aikuj ļoori investment criteria ko jiljino iuṃwin GCF.** Aolep proposal rej aikuj in ļoor wōt investment criteria ko jiljino an GCF (āinwōt aer waļok ilo pija ṅe ilo Figure 4).
- **Iien roñjake.** Ilo tōre eo im būrojāāk ko an GCF rej jino ejaak, ej aikuj bwe en wōr iien roñjake ko ippān aolep ro tōllōkier. Wāwein in ej ļoori wōt jekjek ko eṃōj karōki ilo Handbook in.
- **Ļoor aolep environmental im social safeguard ko.** Aolep proposal ko ñan GCF rej aikuj ļoor “GCF Environmental and Social Policy” im Environmental im Social Safeguard ko ñan mitigate (ak kadikļok ak bōbrae jabdewōt wāween ko rōkauwōtata jen aer jelōt peļaa eo im armej ro im jukjuk-im-pād ko).
- **Bok kōļmenļokjeṅ an kōrā im eṃṃaan.** Aolep proposal ko iuṃwin GCF rej aikuj kōmeļeļeik wāween aer tūrook im aintok ainikien kōrā ro im ṃaan ro jiṃor ñan jipañ ejaake būrojāāk eo ekkar ñan kakien eo an GCF me ej kōmlōt bwe en jokkun wōt jiṃor kōļmenļokjeṅ ko jān kōrā ro im ṃaan ro jiṃor.



Photo: Office of the President, Republic of China (Taiwan)



### 3. Buñtōn Ko Ñan Ejaak Būrojāāk Ko

#### a. Kadkadin Mweñan In

Bwe būrojāāk ko an GCF ren maroñ weppān ej aikuj wōr concept not im funding proposal. Mweñan in in ej kōmeleleiki im kōllaajraki buñtōn ko Kien eo enaaj loori ilo an jino ae tok melele im jino karōki būrojāāk ko, im bareinwōt jino lam ānbwinnin concept note ko ekoba funding proposal ko. Karōk eo de in im kab buñtōn ko de kein bwe en maroñ jino ejaake būrojāāk ko an GCF, kōn men in jabdewōt concept note ko ak kajjitōk ko kijjien jipañ im rej jab loore karōk in kab buñtōn kein NDA eo ejjāmin jutak likier im rejetaki. Pedped wōt ioon joñan aitokan kab kilep in būrojāāk ko enaaj bōk 18 allōñ loke ñan 4 iiō ñan aer emmakūt maanloke. Ālikin an weppān, Accredited Entity eo jitōñe naaj etal wōt kaki im kattōri būrojāāk/būrokraam ko an GCF eo, im GCF Secretariat eo kab NDA eo naaj waati wōt tōprak in kab jemloke in kajjojo jermal ko.

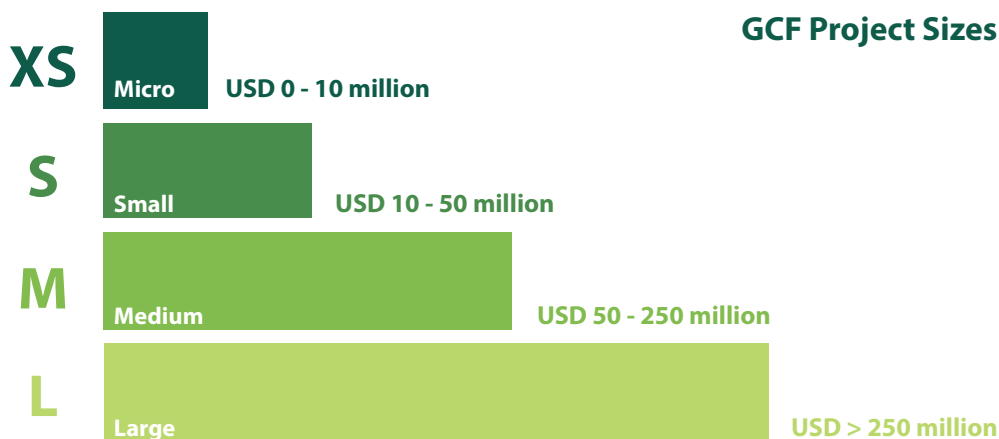
#### b. Wāwein ejaak Būrojāāk im Būrokraam ko

Jāan in jipañ kein jen GCF rej ñan jipañ ña oñāan activity ko bwe oktak ko ñan kadik loke an ettoonon mejatoto eo (low emission), ñan kōkajoor loke economy eo an Majel, im ñan kōjparok jān jorrāan ko jān oktak in mejatoto. Ilo tōre eñ ej kōmman kāālōt eo ñan kōjjemōj jāan ñan būrojāāk ko, GCF eo enaaj etal wōt kōn kāālōt eo ñe ej lo ke proposal eo ej lolorjaaki menin aikuj ko raorōk tata ñan lale eo, emaroñ kakūrmoole climate benefit ko, ej litok oñāan ko remman, im ewōr ial in an kōjeraamman armej ro kab kōkōmmanloke jokkun mour.

Aolep būrojāāk ko an GCF rej aikuj loor wōt kōttōpar ko rarorōk ñan RMI, ekoba jibadbad im kōttōpar ko kōmlōt ilo National Strategic Plan (NSP) eo, ilo National Adaptation Plan (NAP) eo, ilo Nationally Determined Contribution (NDC) eo, im kab ilo GCF Country Programme eo.

Aolep būrojāāk ko kab būrokraam ko an GCF remaroñ kōjermal jāan in jipañ ko jān public ak private sector ko ekoba jāan in jipañ ko jān ijeko jet (ekoba budget eo an lale in ad im kab donor ro). Im āinwōt an waļoke ilo pija ñe ilo Figure 2, aolep būrojāāk ko an GCF remaroñ āinjuon aitokaer, joñaer im depakpakier.

Figure 2: GCF project sizes<sup>3</sup>



GCF ej ña oñāan būrojāāk ko renaaj jipañ bōbrae jorrāan ko jarjar tok jān oktak in mejatoto ilo aer naaj kakūrmoole im kallikkar ke renaaj tōpar juon iaan impact area ko rualitōk - ko me emān iaer rej kijjien adaptation im kab emān rej kijjien mitigation, āinwōt an waļoke ilo pija ñe ilo Figure 3.

<sup>3</sup> Adopted from Green Climate Fund, 2015: <https://www.greenclimate.fund/how-we-work/tools/infographics>

**Figure 3: Mitigation and adaptation strategic impact areas of the GCF<sup>4</sup>**



Ñan lukkuun kallikkar ke jipaň ko tok jãn GCF eo renaaj kōmman wōnmaanlōk ko ñan aelōñ eo ilo wāwein ko renaaj bōbrae jorrãan ko jãn oktak in mejatoto im ilo aer kadiklōk jorrãan ko ñan mejatoto, GCF ekar etal wōt im ejaake jiljino investment criteria ko relukkuun in aikuj in waļok ilo jabdewōt proposal (ãinwōt an waļok ilo pija ñe ilo Figure 4).

Bar jet iaan men ko me relukkuun in aorōk bwe jabdewōt proposal ren kōnono kaki ej bwe en aikuj waļok ainikien kōrã im maan ro, kōlmenlōkjen ko kōn peļaa eo, im jokkun mour ekoba armej ro.

- “GCF Environment and Social Policy” eo ej ñan lale bwe “GCF en lolorjaaki ilo ejeļlōk kalijeklōk, aolep risk ko renaaj jelōt peļaa eo im kab jokkun mourekoba buñtōn ko aikuj bŭki ñan kajjioñ kōkōmmanlōk lōk tōprak in aolep activity ko GCF ej eddoier.”<sup>5</sup> Ijo in me ej laajrak jet iaan joñak ko im rej kalikar tōprak ko kōtmãne im remenin aikuj ñan kōmman wōnmaanlōk ilo jet wāwein ko rejejet im rekkar ñan bōbrae jãn jorrãan ko jarjar tok jãn oktak in mejatoto.<sup>6</sup>
- GCF ej kile aorōk in gender equality ak aorōk in ainikien kōrã im maan jimor ilo aer maroñ tōpari jaan in jeraamman kein im bareinwōt wāwein an jãan in jipaň kein jelōt er. Ewōr juon an GCF kakien ña etan “Gender Policy and Action Plan” eo im ej rie jimwe im meļeļe ko an kōrã im maan ro jimor.

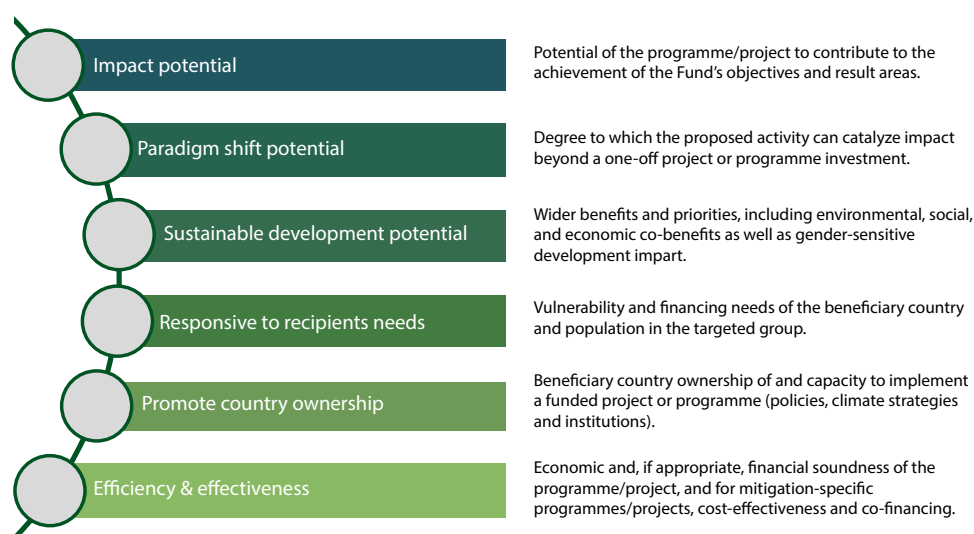


<sup>4</sup> Adopted from Green Climate Fund, 2015: <https://www.greenclimate.fund/how-we-work/tools/infographics>

<sup>5</sup> Green Climate Fund, 2018, “Environmental and social policy”.

<sup>6</sup> Ibid.

**Figure 4: GCF high-level investment criteria<sup>7</sup>**



## Jet Waanjoñak In Būrojāāk Ko An GCF Jān La! Ko Jet Ilo Pacific In

- **Wāween ko ñan ña mejlan climate vulnerability kijjien dān ilo peļak in Majel:** Ewōr US\$24.7 million taļa ko (im UNDP ej Accredited Entity) eņņoj kōjjeņņoji jen GCF ñan būrojāāk ko renaaj jipaņ Kien eo an RMI jipaņ kijjien dān itok wōt jān an ikkutkut im ļap mōrā, eo im ejelōt aebōj ko.
- **Pacific Resilience Project Phase II eo an Republic eo an Majel!** Būrojāāk in me ewōr US\$44.1 million taļa ko (im World Bank ej Accredited Entity) aorōk in ej ñan jipaņ armej in Mājro im Epeje jān an dān eo ļojet wanlōņtak im tōre parijet ko.
- **Tuvalu Coastal Adaptation Project:** Būrojāāk in (im UNDP ej Accredited Entity) me ewōr US\$38.9 million taļa ko aorōk in ej ñan jipaņ Tuvalu jān jorrāān im apaņ ko jarjar tok jān an wanlōņtak ļojet eo im tōre ioon āne ekoba aire ko aer lukkuun jino ikkutkut aer waļok, im jimor rejelōt mour im armej ro ie.
- **South Tarawa Water Supply Project:** Būrojāāk in (im ADB ej Accredited Entity eo) me ewōr US\$58.1 million taļa ko aorōk in ej ñan jipaņ armej in ioon capital eo an Kiribat, South Tarawa kijjien manjapopo kin dren.
- **Climate Information Services for Resilient Development ilo Vanuatu:** Būrojāāk in (im SPREP ej Accredited Entity eo) me ewōr US\$21.9 million taļa ko aorōk in renaaj jermal ñan jipaņ ri-kōmņman kien ro an Vanuatu kōjberbal science ñan ļami im ejaake kakien ko kijjien ukuktak in mejatoto.

<sup>7</sup> Green Climate Fund, 2018, "Investment criteria indicators", GCF/B.20/Inf.14.

## 4. Bürojääk Cycle ko an RMI GCF

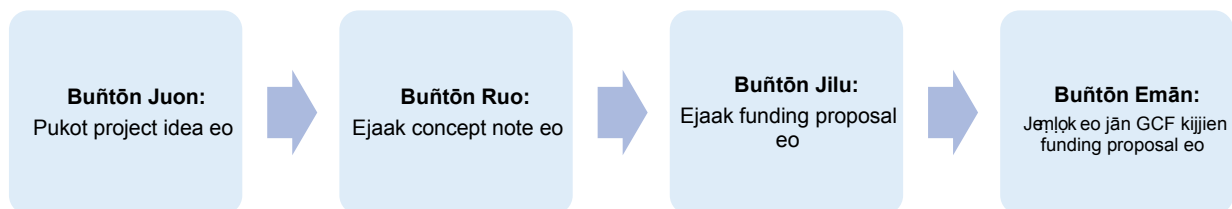
Wāwein ejaak project idea ko im kilen etali im kōweppāni concept note ko im funding proposal ko an GCF rej aikuj loor cycle eo an RMI GCF eo im ej waļok ilo pija ɳe ilo Figure 5 im eñðe emōj tipdiki im kōmeļeļeiki.

### i. Buñtōn Eo Kein Kajuon - Ejaake Project Idea Eo

Buñtōn eo imaan tata ej ejaake project idea ko im rejelet oktak in mejatoto.

- Ro rej jei proposal ko naaj aikuj kōjādeik project idea ko an ñan CCD, ak NDA eo an GCF.
- Ro rej jei proposal ko naaj aikuj kanne peba eo ej waļok ilo “Annex One”. NDA eo emaroñ jipañ uwaak jabdewōt kajjitōk ko kijjien kanne peba in.
- NDA eo enaaj liñōri im ekkatak kaki project idea ko, akō Project Review Committee eo ej eo im ej kōweppāni - project idea ko wōt me emōj kōweppāni naaj ļami bwe ren erom GCF concept note.

Figure 5: Tarlep in aolep mottan im mweñan ko iumwin burojaak ko an RMI GCF eo



### ii. Buñtōn Eo Kein Karuo - Ejaak Concept Note Eo

Ilo buñtōn in, project idea eo naaj ukote bwe en erom juon concept note. AE eo tōļļokin naaj e eo ej bōk jān ijin ilo an ejaake concept note eo iumwin tōl im kapilōk jān NDA eo.

- Concept note eo ej aikuj kwaļok tarlep in būrojāäk eo ak būrokraam eo, im naj leļok ien ñan AE eo bwe en bok kapilōk jān GCF Secretariate eo eļaññe concept note eo ej loor jibadbad im kōttōpar ko an jaan in jipañ ko kojerbali, ekoba kakien ko im kab investment criteria ko.
- Emaroñ bōk tarrin joñoul-ruo allōñ ñan ejaak juon concept note.

### iii. Buñtōn Eo Kein Kajilu - Ejaak Funding Proposal Eo

Ilo buñtōn in, Secretariat eo an GCF enaj dedeļok an likūt kakkobaba ko an ilo concept note eo im AE eo enaaj ļoori kakkobaba kein ilo an ejaak funding proposal eo ñan kattōri jerbal ko.

- Emaroñ bōk tarin roñoul-emān allōñ ñan ejake funding proposal eo, im ej aikuj wōr ekkatak ko, kōnono ko ippān ro tōļļokier ñan bōk kapilōk, im bar ekkatak ko kijjien project design eo im oñāān ko.
- Oñāān ko renaaj ainjuon jān doon pedped wōt ion aitokan, depakpak in im kilep in būrojāäk eo, financial instrument ko kōjerbali, im kab AE eo kāālōte.

### iv. Buñtōn Eo Kein Kaemān - Jemļok Eo Jān GCF Kijjien Funding Proposal Eo

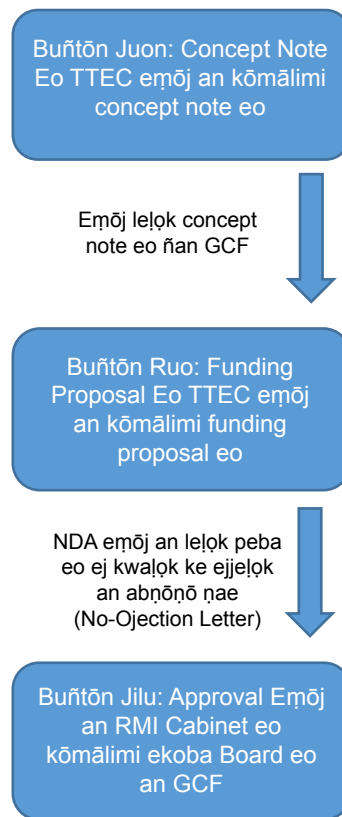
Ālikin wōt an tōprak ļok funding proposal eo emōj kōweppāne ñan GCF eo, innām GCF Secretariat eo enaaj etal wōt im ekkatak kake im liñōre im ro uwaan Board eo an GCF eo naaj kōmṁmane jemļok eo.

- Funding proposal ko me rej etal ñan GCF naaj aikuj linori im kōmṁman ekkatak ko kaki im bedbed wōt ion etale kein, Board eo an GCF enaj kōmṁmane jemļok eo an eļañe ej jutak likin būrojāäk eo ak jaab.

### c. Buñtōn Ko Ikijen RMI No Objection Letter

Āinwōt an GCF kōmlōt, aolep entity (doulul) ko rej submit funding proposal ko ñan GCF rej aikuji No-Objection Lōta eo (NoL) jān NDA. Kien eo an Maje! (GoRMI) enaaj loori wōt buñtōn ko kōmlōt ilo RMI GCF Project Cycle eo (āinwōt an waļok ilo pija ñe ilo Figure 5) kōnke buñtōn kein naaj kōjerbali ñan waati funding proposal ko ñan RMI im bwe ren loor kakien ko an la! eo, regulation ko, im development im climate priority ko. Buñtōn ko kōmlōti ñe ejjeļok menin juṃae proposal ko ej waļok ilo pija eo ilo Figure 6.

**Figure 6: Buñtōn Ko Ikijen RMI No Objection Letter**



Ej aikuj wōr juon NoL ñan kajjojo funding proposal, ekoba concept note eo me ej itok ippān Project Preparation Facility eo (PPF). NoL eo ej aikuj etal ñan ro tōllōkier ilowaan wōt jilñuul raan ko; submission in NoL eo emarōñ jenōļok jān proposal eo.





# Annexes

## Annex Juon: Peba (ak Template) Eo Kōjerbale Ñan Ejaak Project Idea Eo

- Ri-jeje eo ej kanne peba in im lolorjaki peba ko im men ko kōbwebweien aikuji ej liļok ñan NDA.
- Łoor peba eo enaaj jineet eok ilo “Annex Ruo” ñan meļeļe ko jet bwe kwōn maroñ kadedeļok kanne peba in. NDA eo ebar maroñ uwaak jabdewōt kajjitōk ko ñe ewōr.

<b>1. Taitōļ eo an Būrojāāk in/Būrokraaṃ in:</b>	
<b>2. Raan eo peba in ekar etal ñan ro tōllōkier:</b>	
<b>3. Etan applicant eo:</b>	
<b>4. Meļeļe ko aikuji kijjien wāween tōpar applicant eo:</b> a. Atōrej eo: b. Taleboon nōṃba eo: c. Email eo:	
<b>5. Kūtien (Aitokan) būrojāāk in:</b>	<b>6. Ijo (ak ijeko) būrojāāk in enaaj bōk jikin ie:</b>
<b>7. Aorōkin būrojāāk in āinwōt watwate:</b> Ñe ealikkaar aorōk in ilo buñtōn in. a. Dettan Project Funding Eo Aikuji:	<b>8. Etan Agency ko remaroñ bōk kuṃaer:</b>
<b>9. Accredited Entity (AE) eo:</b> Ñe ealikkaar ilo buñtōn in. a. Etan AE eo: <input type="checkbox"/> Direct Access Entity (DAE) <input type="checkbox"/> International Access Entity (IAE)	<b>10. Tarlep in būrojāāk in:</b> <i>Kōkkaļleik boṃok ko rekkaar.</i> <input type="checkbox"/> National <input type="checkbox"/> Local (aelōñ ko likin) <input type="checkbox"/> Community <input type="checkbox"/> Regional/International - kallikkaar etan laļ ko jet rej bōk kuṃaer:
<b>11. Sector Eo (Ko):</b>	<b>12. Unin tōļ eo (ko) kijjien climate change:</b> Ñe jerbal ko rejelōti men kein jimoṃ, <i>kōkkaļleiki.</i> <input type="checkbox"/> Adaptation <input type="checkbox"/> Mitigation
<b>13. Buñtōn ko rej ettōr wōt ippān kōttōpar ko an RMI ej kōṃaan katōpraki moṃtata:</b> Ñe ealikkaar ilo buñtōn in, <i>kōmeļeļeik jidik im kōkkaļleik boṃok eo (ko) ekkaar ijeṃe ilal.</i> <input type="checkbox"/> National Strategic Plan Eo   <input type="checkbox"/> Nationally Determined Contribution   <input type="checkbox"/> National Adaptation Plan Eo <input type="checkbox"/> GCF Country Programme Eo   <input type="checkbox"/> Relevant Sectoral Plan Ko	
<b>14. Area ko me naaj jelōti:</b> <i>Kōkkaļleik boṃok ko rekkaar.</i> <input type="checkbox"/> Jarom <input type="checkbox"/> Wa ko rej jab kōjербal kaan <input type="checkbox"/> Building ko, city ko im industry ko im kab jabdewōt men ko rej kōjербal jarom <input type="checkbox"/> Ekkat wōjke im kōjparoki keininakkan ko im wāween kōjербal bwidej	
<input type="checkbox"/> Jokkun mour an armej ro im jukjuk-im-pād ko <input type="checkbox"/> Ājmour an armej, im ṃōñā im dān <input type="checkbox"/> laļ, ṃōñ jikuu! im ṃōñ jerbal ko, dān, jikin kwōpej eo, jarom, im infrastructure eo <input type="checkbox"/> Ecosystem ko im service ko kijjien ecosystem	

**15. Paotok in/Kōmmelele in būrojāāk in:**

- Ta jibadbad im kōttōpar eo an būrojāāk in?
- Ta maḱutkūt im jermal dikdik ko me renaaj jipañ kōmakūt būrojāāk in?
- Būrojāāk in ej ke jarjartok jān bar jet jermal ko rōkar kōmman ʔok iḱaan?

**16. Wōn ro renaaj jeraamman jān būrojāāk in:**

**17. Kōkapilōklōk ko kōmmani ippān ro tōllōkier:** *Ñe ekar wōr iien jjet, bwebwenato im bōk kapilōk jān ippān ro tōllōkier ilo buñtōn in.*

**18. Annex ko:** *Eban ʔap aikuji annex ko, akō komaroñ kobaiki ippān application eo eʔaññe ekar wōr ekkatak eñ ekar kōmman ak elōñ melele eʔap ʔok kijjen būrojāāk in.*

**19. Laajrak in joñak ko kwaikuji ilo tōre eñ kwōj make etale būrojāāk eo:** *Applicant eo ej aikuji kadedeʔok.*

No.	Joñak eo	Aaet	Jaab	Jabdewōt Kakkobaba
	Project Profile Form eo	<input type="checkbox"/>	<input type="checkbox"/>	Aolep melele ko likūti im jei ilo form in rōbwe ke?
	Agency eo (ko) tōllōkun	<input type="checkbox"/>	<input type="checkbox"/>	Eallikkar ke etan agency im wōpij ko tōllōkier?
	Etokje kijjen climate	<input type="checkbox"/>	<input type="checkbox"/>	Paotokin melele ko ilo proposal in rōtkje ke ñan climate eo? Proposal in ej aikuji kallikkar ke enaaj katōpraki kōttōpar ko ilo juon iaan impact area ko rualitōk me rej kijjen wōt adaptation im mitigation.
	Buñtōn ko rej ettōr wōt ippān kōttōpar ko an RMI ej kōñaan katōpraki ḱoktata	<input type="checkbox"/>	<input type="checkbox"/>	Eallikkar ke buñtōn ko rej ettōr wōt ippān jibadbad im kōttōpar ko an RMI kijjen ukuktak in mejatoto im menin wōnḱaanʔok ko jet , eʔap tata kōttōpar ko rōdeʔoñ ilo NDC eo, NAP eo, NSP eo, sectoral plan im SDG ko.
	Rapeʔtan jermal in im an mālij	<input type="checkbox"/>	<input type="checkbox"/>	Ralikkar ke jibadbad im kōttōpar ko ilo būrojāāk/ būrokraam in? Rōlukkuun ke mālij activity ko ilo proposal in, im wāween an būrojāāk in eddeʔok wōt ilo jermal ko ʔok iḱaan?
	Wōn ro renaaj jeraamman jān būrojāāk in	<input type="checkbox"/>	<input type="checkbox"/>	Ewaʔok ke etan armej ro me renaaj ameni jeraamman ko?
	Kokapiʔokʔok Ippan Ro Tōllōkier	<input type="checkbox"/>	<input type="checkbox"/>	Ewōr ke kein kaḱool ej kwaʔok ke eḱōj tōpar im kōnono kab bōk kapilōk jān ro tōllōkier (āinwōt agency ko tōllōkier im kab armej ro būrojāāk in ejelōt er)?



## Annex Ruo: Peba Eo Ej Kōllaajrake Wāwein Kanne Project Idea Template Eo

- 1. Taitōl eo an Būrojāāk in & Būrokraam in:** Jouj im likūt taitōl in būrojāāk in.
- 2. Raan eo peba in ekar etal ñan ro tōllōkier:** Kallikkar raan eo
- 3. Etan applicant eo:** Je etan applicant eo enaaj leļok peba in ñan ro tōllōkier
- 4. Melele ko aikuji kijjien wāween tōpar applicant eo:** Jei melele ko āinwōt atōrej eo, taleboon nōm̄ba eo, im email eo ñan tōpar doon.
- 5. Kūtien/Aitokan būrojāāk in:** Ewi aitokan būrojāāk ñe ebōk jikin? Būrojāāk ko an GCF eo ekkā aer bōk kōptata in emān (4) ļok ñan rualitōk (8) iiō aitokaer, akō remaroñ kadu ļok ak aitok ļok wōt pedped wōt ioon nature in būrojāāk eo.
- 6. Ijo (ak ijeko) burojaak in enaaj bok jikin ie:** Kallikkar ia eo (ko) būrojāāk in enaaj bōk jikin ie.
- 7. Aorōkin būrojāāk in āinwōt watwate:** Kallikkar jete jāān naaj aikuji jān GCF eo, ekoba jāān in jipañ ko jān doulul ko jet peļaakin laļ in im kab jāān ko waļok wōt jān lowaan Majel. Būrojāāk ko an GCF ekkā aer kōptata in US\$10 million taļa ko aorōkier, im enañin aolep būrojāāk ko emōj kōweppāni ewōr kōptata in US\$10 ļok ñan US\$100 million taļa ko aorōkier.
- 8. Lead agency ko:** Kaalikkari etan ministry ko, agency ko an kien eo, kien ko an kajjojo aelōñ ko im kab development partner ro (ekoba doulul im business ko jān civil society eo) me ewōr kuņaer ilo kattōri jabdewōt būrojāāk ko me GCF eo ekar kōjenļok jāān ko ñan kōm̄mani.
- 9. Accredited Entity eo:** Ñe ealikkari ilo buñtōn in, je etan AE eo an GCF (ijoke, men in ej jab juon men eo me emenin aikuji ilo tōre in). Direct Access Entity (DAE) ak doulul ko kili kōn accreditation remaroñ jet ko rej national ak regional - ijoke ilo tōre in ejjānin wōr juon an RMI DAE ijellokun DAE ko repaake RMI im rej Micronesia Conservation Trust eo, SPREP eo im kab SPC eo. Būrojāāk ko an GCF im rej bōk jikier ilo RMI remaroñ bar itok jān international AE ko (āinwōt ADB, World Bank, UNDP, UNEP, im kab FAO). Laajrak in etan Accredited Entity ko rōpād ilo websit eo an GCF im komaroñ loi ijin: <https://www.greenclimate.fund/how-we-work/tools/entity-directory>
- 10. Tarlep in būrojāāk in:** Ijo in ej aikuji alikkari aitokan, kilep in kab depakpak in būrojāāk eo - āinwōt wāween ko kāālōti ke rekkar ñan community eo ak national, ak būrojāāk eo enaaj etal im tōpar laļ ko jet. Ñe laļ ko jet jān likin renaaj aikuji bōk kuņaer, je etan im kaalikkari etan laļ ko.
- 11. Sector Eo (ko):** Kaalikkari etan sector ko im activity ko renaaj bōk jikier bwe ren dedeļok - ainwōt coastal infrastructure, kijjien jarom, kijjien kallib, im kijjien ājmour.
- 12. Unin tōl eo (ko) kijjien climate change:** Kallikkar ñe būrojāāk eo ej mitigation ak adaptation. Ñe būrojāāk eo ej cross-cutting, jouj im kōkkalleik boļok ko jeņe rekkar.
- 13. Buñtōn ko rej ettōr wōt ippān kōttōpar ko an RMI ej kōņaan katōpraki moktata:** Ej an NDA eo eddo in lolorjake bwe jabdewōt activity ko GCF ej leļok jāān in jipañ ko ñan kōm̄mani im kattōri rej aikuji in etal wōt im ļoori jibadbad im kōttōpar ko an laļ eo ekoba abñōñō ko raorōk tata ñan kōm̄mani moktata.
- 14. Area ko naaj jelōti:** Bwe en tōprak kōttōpar eo ñan iuun paradigm eo ñan low-emission im climate-resilience, GCF eo emōj an kaalikkari emān area ko rejelōt mitigation im bar emān area ko me rejelōt adaptation (lale laajrak eo ilo Figure 3). Jouj im kōkkalleik boļok ko rokkar.

**15. Paotok in/Kōmelele in būrojāāk in:**

- a. Ta jibadbad im kōttōpar eo an būrojāāk in? Kōmeleleik men eo me būrojāāk in ej loe ke emenin kab eļap aikuji (āinwōt “an mōramrōm lōk parijet eo”) im kab climate impact eo (āinwōt “an lāp lōk resilience eo ñan parijet eo/ko”).
- b. Ta activity ko rej itok wōt iumwin būrojāāk in? Kōmeleleik activity eo/ko (r)ej dilep in būrojāāk in (āinwōt “kōkōmanmanlōk aebōj ko ilo mōn jikuul ko, mōn jar ko, kab mōko mōn armej”).
- c. Ejimwe ke būrojāāk in ej edde lōk wōt jān kar jet jermal ko rōkar bōk jikier lōk imaan? Kōmeleleik ewi wāween an būrojāāk in edde lōk wōt jān kar jet jermal ko rōkar bōk jikier lōk imaan im kab wāween an būrojāāk in kōmman bwe en bōro-kuk ippān bar jet doulul ko rej kōmmane ejja bar kain jermal rōt in (āinwōt jermal ippān doon bwe en tōprak būrojāāk eo).

**16. Wōn ro renaaj jeraamman jān būrojāāk in:** Kōmeleleik wōn ro im ia ko renaaj ameni jeraamman ko jān būrojāāk in - ainwōt armej ro ilo community ko, ke armej ro ilo outer island, ke armej ro me mour ko aer rōjedmatmat ñan jorrāān ko jarjar tok jān mejatoto im lōjet eo (ekoba ña aikuji ko an kōrā ro, jōdikdik ro ekoba ajiri ro).

**17. Kōkapilōklōk Ko Kōmmani Ippān Ro Tōllōkier:** Ñe ekar wōr ien jijet, bwebwenato im bōk kapilōk jān ippān ro tōllōkier ilo kien eo ioļap, kien ko an kajjojo aelōñ ko, im kab armej ro ilo jukjuk-im-pād ko. Ilo an kōmman ien jijet im bwebwenato kein kōnke armej ro tōllōkier jermal kein rejelōt er ren maroñ kwaļōk ainikier im kōlmenlōkjen ko aer bwe ren maroñ lōlō ilo kōttōpar ko an būrojāāk eo.

**18. Annex ko:** Eban lāp aikuji annex ko, akō komaroñ kobaiki ippān application eo eļaññe ekar wōr ekkatak eñ ekar kōmman ak elōñ melele eļap lōk rōpojak im rekka ñan kōjādeiki ilo iaļ in kaṃooli kōttōpar ko eṃōj jei ilo application in. Ijo in me jabdewōt ekkatak ko, kein kaṃool ko kijjien kapilōk ko kōmmani, im men ko jet rej wōtlōk tok ie.

**19. Laajrak in men ko kwaikuji ilo self-evaluation eo aṃ:** Applicant eo ej aikuji in lolorjaki tok men kein kōmlōti ilo laajrak in im liļōk ñan NDA eo ippān lōk project idea template eo.

## Annex Three: Kōmmelele In Naan Ko

<b>Accreditation</b>	Jet buñtōn ko im joñak ko me juon entity ej aikuj loori ñan an kwaļok ke emaroñ make lali jeramon ko an GCF ainwōt kōmlōt ilo accreditation application eo an GCF.
<b>Accredited Entity (AE)</b>	Juon entity eo me emōj an Board eo an GCF eo kile kōn accreditation ekkar ñan governing instrument im jemļok ko karōki jān Board eo. GCF eo ej leto-letak jān in jipañ ko ikōtaan Accredited Entity (ak AE) ko. Doulul ko me emōj loi ke remaroñ make etal wōt kaki kōttōpar ko aer kijien climate change remaroñ apply bwe ren erom AE an GCF. Doulul kein remaroñ jet ko me private, public, non-government, sub-national, national, regional ak international.
<b>Adaptation</b>	Juon tōre eo iien kijooni elōñ men ko rejelōt peļak eo im wāween mour ñan ña mejļan apañ im jorrān ko jarjar tok wōt jān oktak in mejatoto, ko me remaroñ jipañ kadikļok jorrān im apañ ko ak remaroñ kōjeraamman armej ro kōn menin jeraamman ko.
<b>Climate Finance Readiness</b>	Climate finance readiness eo ej kallikkar joñan eo laļ eo emaroñe ñan jino maanjāppopo ñan kōpooji, būki, im kōjembali jān in jipañ ko itok jān doulul ko jet peļak in lal in im kab jān ko rej erroļol wōt ilowaan laļ eo, ekoba monitor im report aolep diwōj ļok im jermal in jān ko.
<b>Concept Note</b>	Juon peba eo me ej tipdiki tok melele ko rōlukkuun in aorōk kijien proposal eo ñan lale kōlmenļokjeñ eo ej ke ettōr wōt ippān kōttōpar ko, kakien ko im kab joñak ko kōmlōt kijien kōjjemoj jān ko itok iumwin GCF eo. Template eo an GCF ñan kōjembali maroñ in bōke jān website eo an GCF.
<b>Country Programme</b>	Country programme eo ej ijo ej kaalikkari jibadbad im kōttōpar ko an laļ eo me emōj loi ke raikuj in kōmman moxtata im ej ijo me ej alikkar būrojāak ko im būrokraam ko me RMI ekōñaan bwe ren bōk jikier ilo an jermal ippān ro tolļokier ilo GCF. Wāween in ej tipdiki tok wāween jino ejaake būrojāak ko im būrokraam ko, kaalikkari doulul ta ko rekkar ñan kobaik tok er, eddo ko aer im jermal ippāer, im pojak in jipañ ko rej menin aikuj ñan project in.
<b>Delivery Partner</b>	Juon doulul eo National Designated Authority eo ekar kāālōte im kappeiki bwe en lolorjaki activity im makūtkūt ko rej itok iumwin Readiness and Preparatory Support Programme eo.
<b>Direct Access Entities (DAEs)</b>	Direct Access Entity (ak DAE) ko rej jet Accredited Entity ko an GCF me rej jet doulul ko rej public, private ak non-governmental im er wōt remaroñ apply ñan accreditation ilo an loore jekjek eo karōke ilo direct access modality eo. DAE kein rej jet doulul ko rej regional, national im sub-national, im rej jet doulul ko National Designated Authority eo ej kili.
<b>Enhanced Direct Access</b>	EDA ej juon waween ak buntōn ko nan kokmanmalok ak kabidrodroidklok wawein an wappeen elmokot ko an juon lal. lumwin buntōn ak burokraam in, jermal in manage jaan ko, jermal in kattore birokrām ko rebed ibben kien eo iolap an lal eo im ejjab menin aikuj limaanlok birojeko ko kajojo ilo an jermal in jaan.

<b>Environmental and Social Safeguards (ESS)</b>	ESS ej juon joñak eo ej kōmlōt bwe en alikkar wāween ko nan kalikar im jerbali kauwatata ko rejelet mejatoto im jokkin mour. Unleplep ak mejenkajik eo ESS ej nan kalikar kauwatata ko rejelet mejatoto im jokkin mour eo im Accredited Entity eo ak AE ej lemnak in na mejlaer ilo an lemi, komman manjapopo ko, im katoore wawein an jaan im elmakot kein. ESS ej jermal einwot juon kein tol koj ilo wawein ad na mejlan kautata kein.
<b>Executing Entity (EE)</b>	Executing Entity eo me GCF eo ej liļok jāān in jipañ ko ñan e kōnke ej ijo me enaaj kōmmane jidik in ak juon iaan activity ko; akō ej juon doulu eo me ej kattōre juon activity eo eṃōj kōjjeṃōji jāān ko ñan kōmmane. Juon accredited entity emaroñ bar kōmmani jermal kein ejjeļok oktak jān juon executing entity, ijoke eṃman ļok ñe executing entity eo ej kattōri būrojaak im burokraam ko ej jān laļ eo jelete.
<b>Funding Proposal</b>	Elmōkot eo entity ko rej kajjioñ bōk jāān in jipañ ko itok ilo GCF eo rej kanne im jaakeļok ñan ro tollōkier kijjien būrojāāk im būrokraam ko kōn climate change. Funding proposal ko maroñ liļok ñan ro tollōkier ilo GCF eo jabdewōt iien, im proposal kein naaj ekkatak kaki im liñōri, eo me jemļok eo ñan kōweeppāne ke ak jaab ej itok jān Board eo an GCF eo. Template (ak peba) eo kojerbale ñan funding maroñ bōke jān website eo an GCF eo.
<b>Gender Policy</b>	Kakien eo kijjien an alikkar ainikien ṃaan im kōrā jīmor ej ñan lukkuun kallikkar ke GCF eo ej bar bōk ijo kuṃaan kijjien gender equality, im ilo wāween in, kōtmāne ke enaaj laļok tōprak im sustainable tōprak ko.
<b>International Access Entities</b>	International Access Entity ko rejja bar ṃōttan wōt Accredited Entity ko an GCF āinwōt wōpij ko tōllōkun United Nations, multilateral development bank ko, international fiñancial institution ko ekoba regional institution ko. GCF eo ej kili doulu kein kōnke ewōr aer ri-jermal rōtijemļok ilo jabdewōt men ko kijjien climate change, area ko jet.
<b>Investment Criteria</b>	Ewōr jiljino investment criteria ko an Board eo an GCF, im rej criteria kein rej impact potential, paradigm shift potential, sustainable development potential, aikuj ko an ro rej bōk jipañ jān jāān in jipañ kein, country ownership, im efficiency kab effectiveness. Ippān criteria kein ewōr coverage area ko, āinwōt activity-specific sub-criteria ko, im indicative assessment factor ko me renaaj letok eļap ļok meļeļe ko.
<b>Mitigation</b>	Kijjien climate change, mitigation ej kōnono kōn wāween ko ñan kadik ļok kattoonone mejatoto eo itok wōt jān menin jeraamman ko kōjerbali me rej kōjermal kaan.
<b>National Designated Authority (NDA)</b>	Doulul eo ej dilep in im kab ṃaanje in aolep ṃakūtūt ko ikōtaan laļ eo im kab GCF. National Designated Authority eo (ak NDA eo) ej lukkuun etali wōt activity ko me jāān in jipañ ko itok jān GCF ren ettōr wōt ippān jibadbad im kōttōpar ko an laļ eo im ta ko rej aikuj bōk jikier ṃoktata, im kab NDA eo ej jipañ leṃaan ļok kōttōpar eo kijjien adaptation im mitigation ekkar ñan aikuj ko jān armej ro ilo laļ eo. Eddo ko an NDA eo rej ñan tōllōke juon lōte eo me ej kōmlōt ke ejjeļok abñōñō ak kajjitōk im menin juṃae ko ṃae proposal ko eṃōj liñōri im ekkatak kaki im kab NDA eo ej leļok etan ro aer proposal ko ñan direct access entity ko.

<b>Nomination Letter</b>	Juon lōta eo me National Designated Authority eo ekar je im leļok ñan entity eo ej lo ke ekkar bwe en kappok an accreditation jān GCF. Entity ko rej apply ñan accreditation rej aikuj leļok lōta in nomination in kōnke ejja mōttan wōt peba ko aikuji ilo accreditation application eo.
<b>No-Objection Letter</b>	Juon lōta jān National Designated Authority im ej kallikkar ke ejjeļok an abñōñō, kajjitōk im menin jumae ko ñae funding proposal eo ej itok jān Accredited Entity eo tōllōkun. Lōta in naaj etal ālikin wōt an dedeļok ļoori buñtōn ko kōmlōt ilo karōk eo RMI eñōj an kōmlōte kijjien ñe ejjeļok an kajjitōk ñae juon proposal.
<b>Private Sector Facility</b>	Private Sector Facility (ak PSF) eo ej e eo ikōtaan local im global private sector ko im ej kōnono ippāer bwe ren kōjjemōoji jet jāān ko ñan activity ko kijjien mitigation im adaptation. PSF eo ej an eddo eo ñan an iuun maanļok paradigm eo jibadeke bwe en jab lōñ apañ im wāween ko renaaj jelōt an itok jāān in jipañ ko jān doulul ko ilo private sector eo im ej an eddo eo in lipjerjere private sector eo bwe en kōmmani kōjjemōoj ko ñan kōttōpar eo kijjien low carbon im climate resilient.
<b>Project Preparation Facility</b>	Project Preparation Facility (ak PPF) eo ej jāān ij jipañ ko itok jān GCF me ekkā aer itok ilo grant ko ñan accredited entity ko (ak AE ko), me rej jet jāān ko eļap aikuji ñan ļami im jei funding proposal ko rej kōmakūti im kattōri būrojāāk ko rej micro-to-small im rej itok jān Direct Access Entity ko.
<b>Project Proponent</b>	Juon kumi ak doulul eo me ej elmōkoti im jei project idea ko im liļok ñan National Designated Authority eo. Emaroñ itok jān private sector eo ak public sector eo (ekoba ministry ko, kien ko an kajjojo aelōñ ko, private sector eo, doulul ko iuwin civil society eo im kab doulul ko an jukjuk-im-pād ko), im remaroñ in bar jet AE an GCF eo.
<b>Results areas</b>	Ewōr rualitōk result/impact area ko me renaaj kakūrmooll kōttōpar ko kijjien mitigation im adaptation ilo aer iuunun maanļok oktak ko im wōnmaanļok ko ñan low-emission im climate-resilient. Mitigation ekūtbuuj area ko emān im rej low-emission energy, power generation, low-emission transport, energy efficient building, city im industry kab sustainable land use im forest management. Adaptation ekūtbuuj bar emān area ko im area kein rej eñmanļok jokkun mour an armej, eñmanļok ājmour im ineemman, mōñā im dān rōpolel; pojak infrastructure eo im environment eo ñan jorrāan im apañ ko jarjar tok jān climate change, im ecosystem ko ren bar pojak. Ej aikuj in lōlō juon ak elōñ ļok iaan result/impact area kein ilo aolep proposal.
<b>Simplified Approval Process</b>	Simplified Approval Process Pilot Scheme (ak SAP) eo ej jet buñtōn ko eñōj karōki ñan būrojāāk ko rōddik. Būrojāāk ak būrokraam kein rej eligible ñan SAP eo pedped ioon joñak kein: (i) epojak ñan lelōñ ļok im kōmman eļap oktkak ko; (ii) kajjitōk joñan in \$10 million taļa ko ñan būrojāāk eo; im (iii) wāween ko rōkauwōtata ñae peļaak eo im armej ro ilo jukjuk-im-pād ko eñōj kaalikari ke rōban ļap aer kauwōtata ñan armej ro.

