

Dr Netatua Pelesikoti  
Sunrise: 27 October 1958 - Sunset: 11 November 2020

SPREP Programme Manager, Pacific Futures - 2009-2011  
SPREP Director, Climate Change - 2012-2017

# Climate Change Matters

## DIRECTOR'S NOTE

Dear friends and colleagues,

This edition of the CCM comes at a time of reflection on shared journeys and vision. 2020 has been a difficult year with the Covid 19 pandemic which has made the issue of climate change even more urgent.

At this time, Fiji yet again has suffered the blow of another tropical cyclone and now faces the long road to recovery. Our thoughts and prayers are with Fiji as they face the road ahead to recovery. God bless Fiji and her people.

Not long ago we lost a great champion of our people, - a trailblazer in her field and a daughter of the Pacific. Dr. Netatua Pelesikoti will be remembered by the Climate Change Programme at SPREP as a fierce protector of the Pacific family and advocator for pacific climate change issues. She was visionary and always put pacific countries first.

She was more than a mentor; she was a friend and sister who will be dearly missed by the CCR family. For those of us who were fortunate to have shared part of her journey – we remain in her debt for passion instilled in staying the course against climate change impacts in our region.

This year brought about many challenges and sudden transformations we all had to adapt to. But In light of such challenging times, we continued to explore innovative ways to connect with our members through on line course development and numerous zoom meetings with our community of practice.

This last issue of 2020 is full of your updates on events that occurred in our programme of work in November-December.

Thank you for the partnership, the collaboration and for sharing our journey through 2020.

To end another busy year, from our family to yours – Monuina e Kilitimati moe tau foou. May God bless and keep you safe- Merry Christmas and a blessed New Year.

Soifua ma ia Manuia,

*Tagaloa*

Director of Climate Change Resilience  
Secretariat of the Pacific Regional Environment Programme (SPREP)



Tagaloa Cooper-Halo

### Samoa Primary School Science camp: Stimulating interests in different fields of science

More than 20 Year 8 students from Samoa Primary School participated in a Science Camp held at Taumeasina Island Resort on 31 of October. The science camp was organised by Samoa Primary School management and teachers in partnership with Artificial Reefs Samoa to stimulate interests in different fields of science.

[READ MORE ...](#)



### Climate information services to enhance resilience of Vanuatu's productive sectors

A 5-day virtual event organised by Vanuatu Klaemet Infomesen blong Redy, Adapt mo Protekt (Van- KIRAP) in partnership with Vanuatu Meteorology and Geohazards Department, Vanuatu Fisheries Department, Vanuatu Department of Tourism, Vanuatu Public Works Department, Vanuatu Department of Agriculture and Rural Development, APEC Climate Center (APCC), Bureau of Meteorology (BOM) and Commonwealth Scientific Industrial Research Organisation (CSIRO) took place on November 17th-November 20th and November 24th.

[READ MORE ...](#)



### Telling our stories with the climate change story grants

Pacific news stories on climate change told by Pacific islands media are being given a boost with the opportunity to apply for story grants.

The Climate Change Story Grants support the development of engaging media content that tells emerging Pacific stories of climate change, climate adaptation and resilience throughout the cyclone season.

Formed through a partnership between ABC International Development, the Secretariat of the Pacific Regional Environment Programme (SPREP) with support from the Australia Pacific Climate Partnership and Australian Aid, these Climate Change Story Grants are now available.

[READ MORE ...](#)



### Community Based Early warning systems introduced through CREWS project

Representatives of the Government of Samoa, private sector, non-governmental organisations and the community were introduced to Community Based Early Warning Systems (CbEWS), a component of the World Meteorological Organization's (WMO) Early Warning System Pacific Small Islands Developing States (CREWS Pacific SIDS) project during a two-day inception workshop held in Tuana'imato.

[READ MORE ...](#)



### Green climate fund project now approved for Pacific Islands

Fourteen Pacific islands have now been able to access funding for Green Climate Fund projects to address climate change, following the most recent GCF board meeting this week.

This has resulted in full Pacific coverage of GCF projects across the Pacific islands – a positive step for the Pacific islands region, which is on the frontlines of climate change.

The newly approved project – "Enhancing Climate Information and Knowledge Services for resilience in the small islands" for Cook Islands, Niue, Palau, Republic of Marshall Islands and Tuvalu is also the first GCF project for both Niue and Palau.

[READ MORE ...](#)



### Second Meeting of the joint Coordination Committee

The Second Joint Coordination Committee (JCC) meeting of the Project for the Capacity Building on Climate Resilience in the Pacific at the Pacific Climate Change Centre (CBCRP-PCCC) was held virtually on 8 December 2020. CBCRP-PCCC is implemented in partnership with the Secretariat of the Pacific Environment Programme (SPREP), the Government of Samoa and Japan International Cooperation Agency (JICA) to operationalize the training function of the PCCC from July 2019.

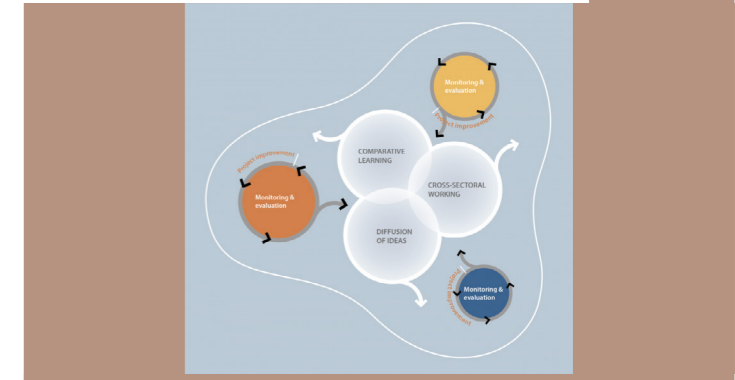
[READ MORE ...](#)



### Why learning is essential for climate adaptation monitoring and Evaluation

It is easy to assume that having a monitoring and evaluation (M&E) system in place is a surefire way to guarantee that we are learning effectively from our climate adaptation efforts. While learning may be implicit in M&E, we need to make a special effort to embed and promote it within our approaches. The urgency of the challenge, the inherent uncertainties associated with climate change, and the context-specific nature of adaptation are important catalysts for improved learning. However, learning may also be (dis)incentivized by power dynamics, institutional structures, and cultures.

[READ MORE ...](#)

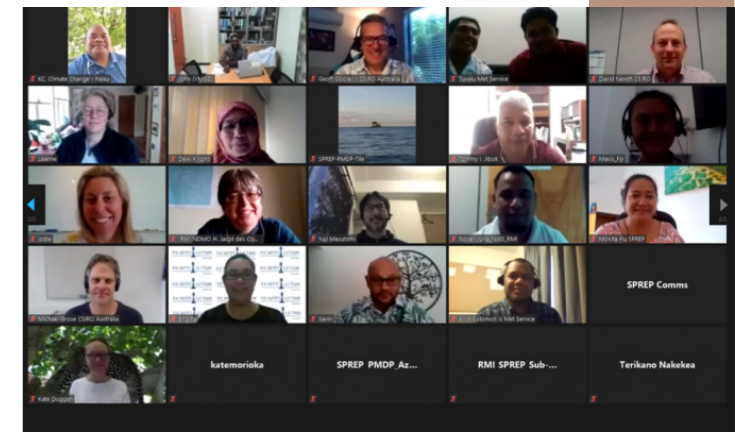


### Evidence based decision making for our pacific via "next generation"

An update on the Next Generation of Climate Projections for the Western Tropical Pacific project, was held this month.

The project, funded by the Australian Government through the Australia-Pacific Climate Partnership (APCP) and the Commonwealth Scientific and Industrial Research Organisation (CSIRO) and implemented by the CSIRO Climate Science Centre in partnership with the Climate Change Resilience (CCR) programme of the Secretariat of the Pacific Regional Environment Programme (SPREP), provides Pacific Island countries with climate change science to inform decision making at policy and sectoral level.

[READ MORE ...](#)



### Enhancement of Samoas NDC and preparation of an implementation plan: Cross Sector Workshop

An inception workshop supported by the NDC Hub (hosted by GGGI, Castalia and MNRE Samoa) was carried out on 23rd November, 2020 to review Samoa's 2015 NDC and compile the enhancement of its NDC, development of its NDC Implementation Roadmap and an NDC Investment Plan with project pipeline.

This workshop brought in experts from relevant national Ministries to fact-check and establish a baseline of data (and source for this data) to be used for informing the national documents currently under preparation.

[READ MORE ...](#)



### CBCRP-PCCC training on understanding access to climate finance

The Pacific Climate Change Centre (PCCC) organized a training program of "Understanding Access to Climate Finance" in November and December 2020 for the Pacific Islands Countries through the Project for the Capacity Building on Climate Resilience (CBCRP-PCCC) in partnership with the Secretariat of the Pacific Environment Programme (SPREP), the Government of Samoa and Japan International Cooperation Agency (JICA).

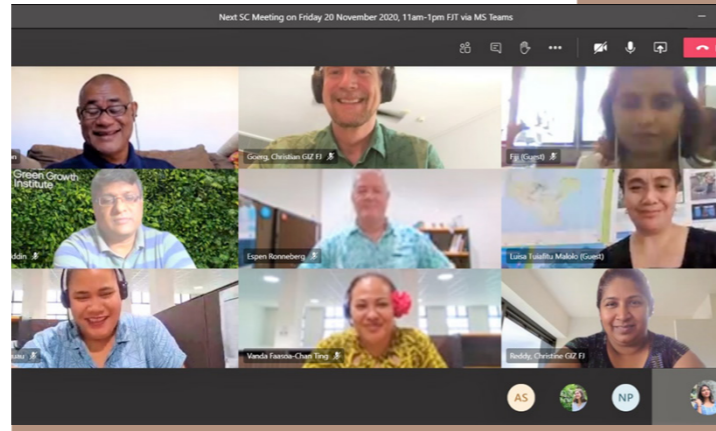
[READ MORE ...](#)



### Pacific NDC Hub Steering committee meeting

The Regional Pacific Nationally Determined Contribution (NDC) Hub held its second Steering Committee meeting on November 20th, 2020 virtually through Microsoft (MS) Teams. This meeting provided updates to the Steering Committee on the NDC Hub's funding arrangements, recruitment, implementation of country activities as well as recent and upcoming events

[READ MORE ...](#)



### COSPPac Climate Summary ISSUED 04 DECEMBER 2020

- La Niña continues in the tropical Pacific. International models suggest it is likely to continue to at least February 2021.
- The Intertropical Convergence Zone (ITCZ) shifted North, while the South Pacific Convergence Zone (SPCZ) was shifted to the southwest. Both features are typical of La Niña.
- For December 2020 to February 2021, the dynamical models (as well as SCOPIC) agree on above normal rainfall for Southern Cook Islands, Fiji, southern French Polynesia, central to northern Marshall Islands, New Caledonia, New Zealand, Niue, Palau, areas in Southern Regions of PNG, and central and eastern Solomon Islands. The models also agree on below normal rainfall for northern Cook Islands, central and northern French Polynesia, Kiribati, southern Marshall Islands, Nauru, New Guinea Momase and islands regions, Tokelau and Tuvalu.

#### CALENDAR

[Click here to view the SPREP calendar](#)

#### DONORS AND PARTNERS

[Click here to see our donors and partners.](#)

### Tribute to Dr Netatua Pelesikoti



We are deeply saddened to know our Pacific islands region has lost a true Pacific Warrior. Dr Netatua Pelesikoti was visionary, inspirational and dedicated to building the resilience of all Pacific countries. She was proud to serve our region and her dedication to that calling came with a bottom line - that our Pacific islands came first, all Pacific island countries.

Dr Netatua was with SPREP from 30 November 2009 to 31 May 2017, initially as Programme Manager, Pacific Futures then as Director, Climate Change from 1 January 2012. Over that period, she initiated several new climate change projects and initiatives which continue her vision and dedication to building Pacific resilience. We are proud of her accomplishments.

She was the first Pacific Island Woman to be a Lead Contributing Author to Chapter 29 on Small Islands in the 5th Assessment Report of the Intergovernmental Panel on Climate Change. More recently and not surprisingly, Dr Netatua was admitted to the Scientific Advisory Panel of the World Meteorological Organisation, an elite group of 15 scientists worldwide who are experts on weather, climate and water. This achievement is no small feat for our region.

In 2019, the Pacific Meteorological Council awarded her "The PMC Lifetime Award" in recognition of her key role in the establishment of the Pacific Met Council, the Pacific Meteorological Desk Partnership, Pacific Island Climate Outlook Forum and the Pacific Ministerial Meeting on Meteorology that had its inaugural meeting in Tonga in 2015.

We cannot talk of the enhanced visibility of the meteorological issues in the region without attributing credit to her.

Dr Netatua leaves behind a vast regional and global network of climate change professionals, who also mourn her loss.

We were all blessed to have worked with her. She was a respected colleague, a trailblazer, a leader and a loyal friend.

We have all lost an amazing Pacific Island Woman, a leader in her field.

On behalf of all of SPREP may I convey our deepest condolences to Pita, children, and all of her family at this most difficult time.

Toka ā Netatua 'ihe nonga 'a e 'Eiki"



Wishing our Pacific family a safe Christmas and a prosperous new year.

CLIMATE CHANGE RESILIENCE PROGRAMME STAFF



CLIMATE CHANGE MATTERS  
ISSN: 2227-6947

Published by the Secretariat of the Pacific Regional Environment Programme (SPREP)  
PO Box 240, Apia, Samoa • Ph: +685 21929 • [sprep@sprep.org](mailto:sprep@sprep.org) • [www.sprep.org](http://www.sprep.org)

A resilient Pacific environment sustaining our livelihoods and natural heritage in harmony with our cultures