

**National Capital District Commission**

Community & Social Services Department  
Waste Management Division  
P O Box 7270  
BOROKO  
NCD  
Phone: 675 323 4491  
Fax: 675 323 1182  
E-mail: simeont@ncdc.gov.pg

**KEEP OUR CITY CLEAN**



[www.ncdc.gov.pg](http://www.ncdc.gov.pg)

The NCDC – Waste Management Division Operated in the year 2000, with only 2 (Two) Officers supervising and monitoring Waste Removal Services to areas covering waste collection from, Residential, Commercial, Markets, Schools, Villages & Settlements.

Today there are a total of 31 staff including the Manager – Waste Management, 8 Environmental Health Officers and 21 Support Staff.

It's operational functions are Divided into 3 Major Areas; Area A – Collection & Disposal; Area B – Dump Management and Area C; Hazardous Waste.

**Rabis Laif Olgeta...**

Did you know that the National Capital District has a Waste Management Office that manages the collection, carting and disposal of all waste generating from within the city?

Besides providing waste removal services, we also charge fees for different types of waste that you want to dispose at the dump.

Waste Depot Fees (per load)

**Chemicals Hazardous Waste** K151.25

**Explosive & Toxic Non-Hazardous** K151.25

**Solvent or Fluid Wastes** K107.25

**Solid Waste (General)** K52.25



**Nakata Landfill, East Fukuoka, Japan**

This is the Fukuoka Method that will be used for the Baruni Dump Upgrade. So hopefully, in the year 2016, Baruni Dump will look like this.



**WMD Waste News**



09th October, 2013

Volume 1, Issue 1

**Special points of interest:**

- An introduction & highlight of the J-Prism Project.
- Forewords from Deputy City Manager & a Manager Waste Management.
- Highlights of Exercises/ Surveys of the Project.

**Inside this issue:**

- An insight by DCM- Mr. Honk Kiap 2
- Message from a Manager -WM 2
- Facts & Features on Waste Mngt. 2
- Waste Management & The Project 3
- Communications with the Project Coordinator 4

**J-PRISM Project Introduction**

Since 2000 JICA has been working closely with the Secretariat of the Pacific Regional Environmental Programme (SPREP) to improve SWM in the PICs. The Japanese Technical Cooperation Project for Promotion of Regional Initiative on Solid Waste Management in Pacific Island Countries (hereinafter referred to as J-PRISM) was inaugurated in February, 2011 and is scheduled to run up to February, 2016.

PNG and ten other PICs are participating in J-PRISM. The Three Outputs of this Capacity Development Project in PNG are:

1. Solid waste disposal facility and operation is improved
2. Waste collection efficiency in Port Moresby is improved
3. Capacity of planning and monitoring of SWM is increased



Current state of Baruni Dump

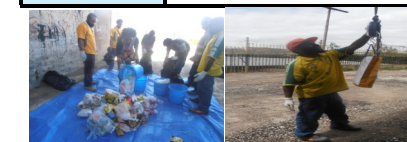


The Dump in September 2012. Marking & creating of cells.

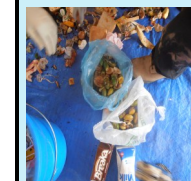
**Project Progress**

We started the Project in March 2011. Twenty-nine (29) months have passed. What have we achieved?

Baruni Disposal Site	Site Surveys are completed. Concept design prepared Demonstration work done
Waste Collection	Time & Motion Surveys for Commercial Waste Collection



**Planning & Monitoring of SWM**



Waste Audit Survey Implemented in July -September 2013. Data Analysis has been Completed & Report Preparation is underway.

**Domestic** : 0.33kg/capita/day  
Daily Total Vol. – 4642L  
Bulk Density – 0.0914kg/L  
**Commercial**: 0.1829kg/m<sup>2</sup>/day  
Bulk density 6.699913kg/m<sup>3</sup>  
**Betel-nut**: 16.5kg/wk (2.357kg/day)

“it is my strong belief that continuous public awareness and active participation in all levels of our society is a key factor in keeping our city clean.”

Today I want to talk about ... (Waste Message to You!)

The management of solid waste is one of the major tasks of NCDC. For this purpose our Waste Management Division is staffed with highly qualified and motivated staff. However it is my strong belief that continuous public awareness and active participation in all levels of our society is a key factor in keeping our city clean.



Mr Honk Kiap, Deputy City Manager, Community & Social Services



One of the yellow compactors used by the WM office as a standby fleet.

The Waste Management Office had undergone some management changes which resulted in a switch in positions of the Manager Waste Management and our J-Prism Project Coordinator. However, since taking office; a/ MWM had reassured the management, staff, stake holders and clients



Mr. Simeeon Terina, Acting Manager—Waste Management Division

that current operations, projects and related waste management matters would be prioritized & enhanced to meet WM goals and objectives.

To date waste management services still remain to be below par but attempts are made to improve same in

due course as waste management is not only just collection, transportation and disposal; there is more to it. It requires public and private partnership and cooperation to effectively and efficiently manage it.

Environmental sustainability is the

ultimate goal and is achievable if everyone co-operates and do their parts. So let's take ownership and contribute towards making Port Moresby City a clean, safe and livable place. We can make a difference. Say no to littering.



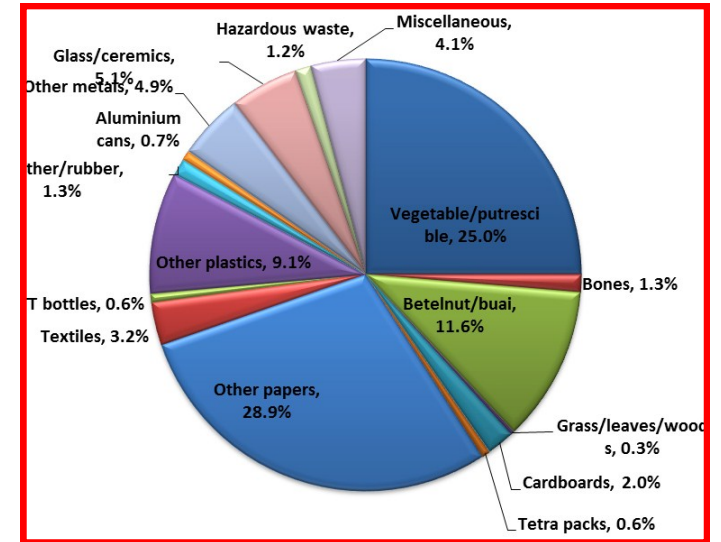
Miss Atsuko Orimoto with Waste Management Staff during the J-Prism Project Mid-Term Review.

Waste Facts and Features

A population of 325,000 people are serviced by NCDC. The estimated daily amount of municipal waste generated in our city is about 107.25 tons, as confirmed through the current waste audit exercise in August 2013. We however, also have other waste types such as medical waste, hazardous wastes, market wastes, construction, demolition wastes and public places litter among others.

The total generated waste volume may reach about 200 tons plus per day if a more comprehensive study is undertaken and if it includes villages wastes, local fruits and vegetable markets and schools and institutions. The Waste Management Division is responsible for management of the municipal solid waste. In PNG, recycling is limited to cans, plastic and glass containers and some food waste for piggeries,

including small scale compost. It is estimated that only 2-3% is recycled.



WMD Staff and Project News

Perhaps some of you have noticed the 5 yellow compactor trucks which we were introduced in various parts of the city for waste collection? During July we had to dispose off a condemned shipment of rice at our disposal site. We also do that! Our Senior Waste Manager Officer, John Navara is now imple-

menting The 3R Heart pilot project with its Logo Competition. The project will be implemented through selected schools in Port Moresby. Please support the survey team if they visit your school. And Ronnie Ranu (SWMO) and Vivianne Morofa, (WMO) had implemented a number of surveys on waste audit and would like to

thank participants from Moresby North East. The Time & Motion study is planned for October so if you see them in your areas please cooperate with them! Mr Paul Wisi and Walter Aukleya, Our Japanese colleagues are back in town and will be coming repeatedly during the next 6 months. If you see them around, practice your Japanese with them!

“The 3R Heart Pilot Project with it's Logo Competition.”

Communications on SWM

The coordinator ensures that the J-PRISM Project is smoothly implemented. And that colleagues fully benefit from the Project activities. There are many activities related to this project, such as;

- Surveys (waste characterization & Time and Motion Study)
- Pilot projects (3R's pilot study & Recycling at selected schools)
- Rehabilitation of the disposal site
- Training programs (Waste pickers, contractors & operators)
- Workshops

both in NCDC, DEC and other related agencies in order that we can provide a service that protects the public health, is sustainable and above all is suitable for our city of Port Moresby. Our goal is to develop the capabilities of our staff in the SWM sector

