

Pacific Adaptation Climate Change

Regional Inception Workshop



Republic of the Marshall Islands

29 June – 3 July 2009

SPREP, Samoa

Low lying atolls



- 70 sq. miles of land
- over 700,000 sq. miles of water
- Land averages 2 meters above mean sea level
- 100% infrastructure near coastline

Impacts to RMI

- Ocean acidification
- Increase in frequent of storm surges
- Longer frequent of drought
- Negative effects to marine resources
- Sea Level Rise
- Land degradation
- People, culture and our heritage

Selection of thematic area

- Consultation February 2008
- Prolonged drought
- Limited rainfall
- Limited underground water resource
- Build resilience to climate change
- Thematic area: Water
- Pilot Site: Majuro Atoll



Mainstreaming of PACC:



UNFCCC, UNCCD, BPOA,
MDG,

VISION 2018

National Strategies

PACC, IWRRM, NCSA,

Adaptation initiatives/activities/projects

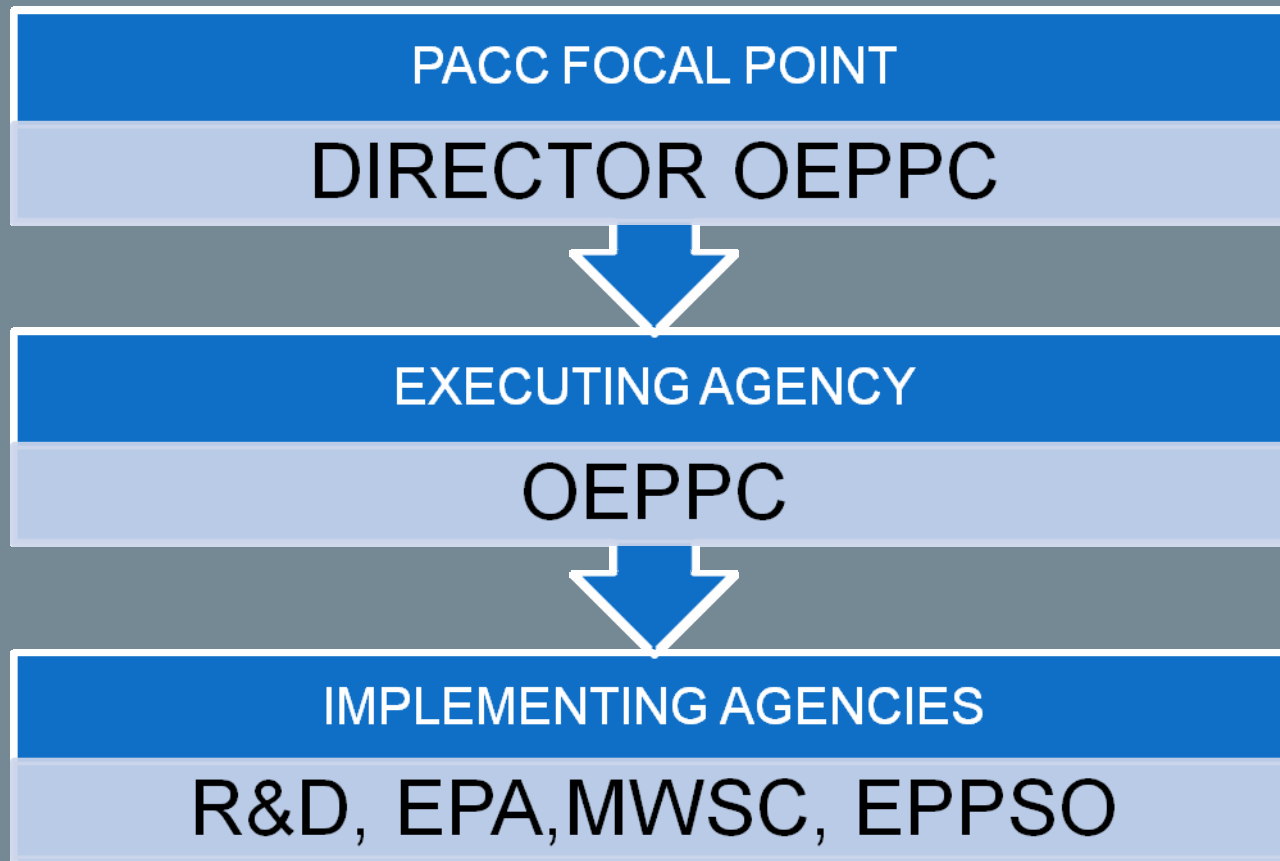
- Micronesia Challenge - RMI National Reimaanlok
- Food Security – activities being done within the context of climate change and conservation
- Strengthening of enforcement of environmental regulations to manage coastal resources
- Improving solid waste management
- Strengthening primary education
- Strengthening coastal through planting of local trees near shorelines

- IWRM
 - Management and conservation of water lens in Laura
- NCSA
 - Identifies and addresses capacity needs of RMI in meeting the obligations of the Rio Conventions and national environmental issues
- ADMIRE
 - Renewable and energy conservation
- EU Water Project
 - Water tanks , public awareness

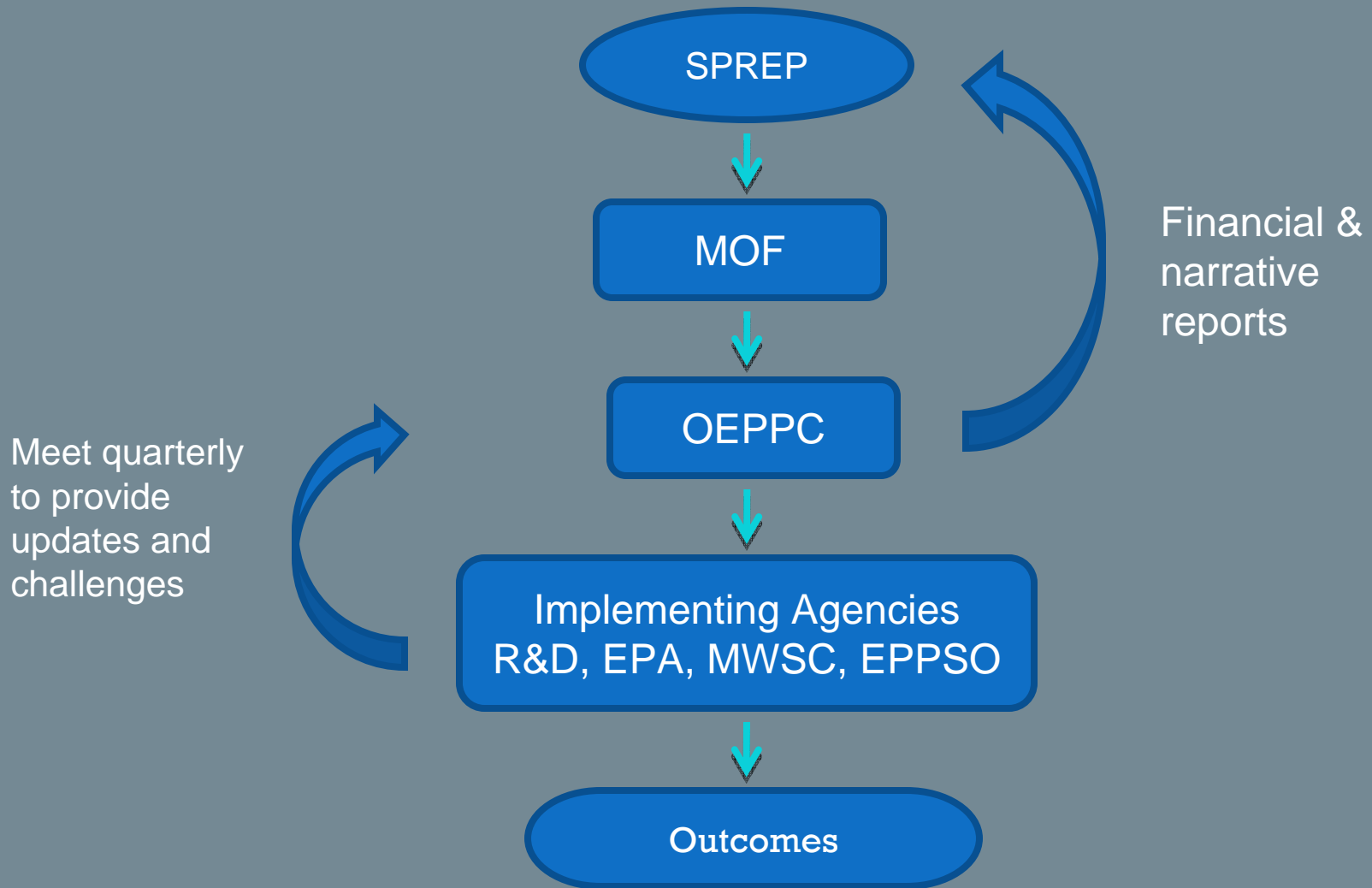
Linking Climate Change to Priority Areas in the RMI 2006-2013



PACC Institutional Arrangement



PACC Financial Arrangement:



Co-financing of PACCC

○ OEPPC	\$ 160,000
○ MWSC	\$ 400,000
○ R&D	\$ 450,000
○ CMI	\$ 615,000
○ NWS	\$ 300,000
○ ROC	\$ 250,000
○ EPA	\$ 200,000
○ Airport Works	\$ 4,000,000



○ **TOTAL** **USD \$**

6,300,000



Pilot project areas

○ Airport Reservoir (water storage)

- Source rainwater and underground water from Laura
- NB: 25% water pumped reaches storage tanks
- 32 million gallons storage capacity
- Evaporation rate approx. 1million gallon/month



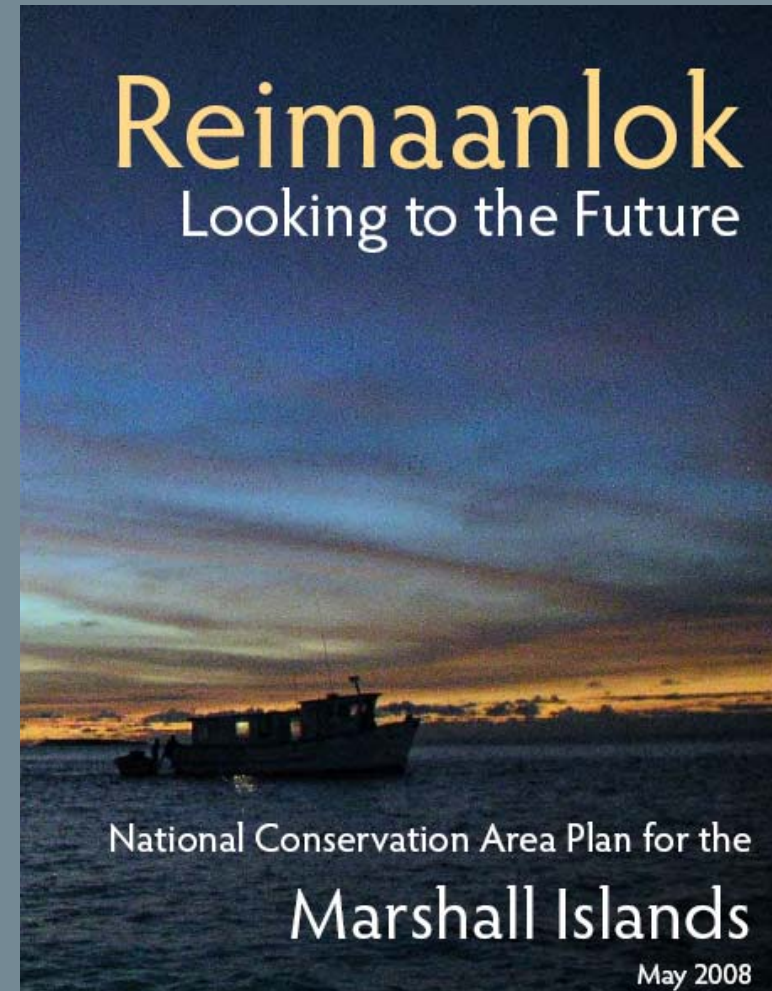
○ DSAP Bucket Irrigation

- Laura Farmers using MWSC & underground water for agriculture
- 85 registered (MR&D) farmers in Laura
- 187 HH registered to MWSC [16 active, 171 inactive]
- 47% HH Laura without water tanks (EPPSO, 2009)



Pilot project areas

- CMI
 - Pilot project which aims to be 100% self reliance on water and energy
 - Have installed RO & Solar
- EPPSO
 - Tasked to facilitate the development of RMI Water Strategy
- EPA
 - Awareness & Education Unit
 - School visits and community outreach program



Challenges

◉ IMPLEMENTING PHASE

- Identifying and purchasing of suitable /appropriate evaporation covers for reservoir
- Require technical assistance for installation of evaporation covers
- Develop criteria for selecting farmers in Laura
- Identifying a suitable consultant to draft national water policy
- Mass publication of materials

◉ REPORTING

- Generic template for completion of outcome
- Terminal Report

EU Water Project – Majuro

	HH	HH w/o	% w/o	Pop	Pop w/o	% w/o
DUD	2,368	545	23%	19,418	4,469	23%
Rairok	983	248	25%	6,390	1,612	25%
Rural	446	139	30%	3,262	973	30%
Laura	360	168	47%	2,628	1,235	47%
TOTAL	4,177	1,100	26%	31,698	8,289	26%

EPPSO, June 2009

Issues being discussed

- “Water Office”
 - Coordinate and integrate water-related activities for RMI
- EU Water Project will supply 500 water tanks
 - 1100 HH without water tanks (Majuro only)
 - High % of HH with inadequate water storage (Majuro)
 - 40% people (Majuro) do not regularly hear the radio or read newspaper
- MWSC only receives 25% of underground water pumped from Laura wells to Airport Reservoir
 - Illegal connection, leakage
 - Need flow meters

M.W.S.C. WATER HOURS

6:30-10:30 ~ 4:30-8:30

Sunday

OFF

Monday

ON

Tuesday

OFF

Wednesday

OFF

Thursday

OFF

Friday

ON

Saturday

OFF

Komol tata



KOMMOL



TATA